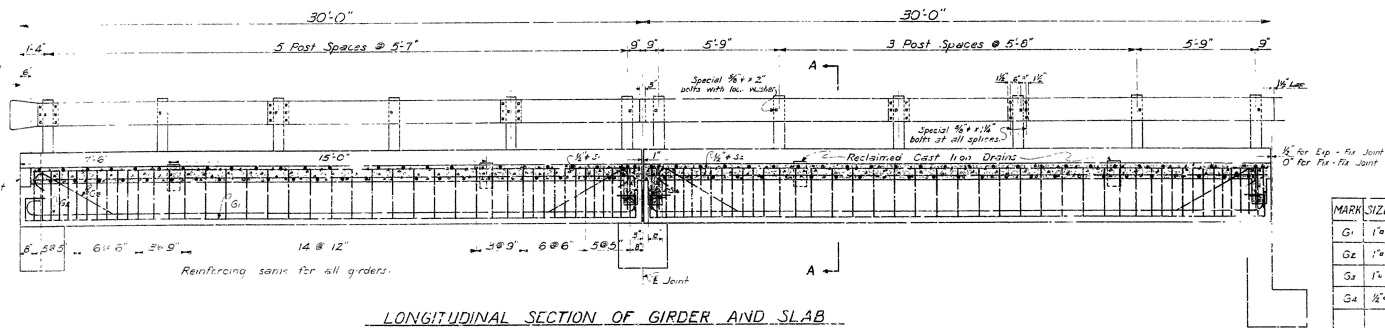
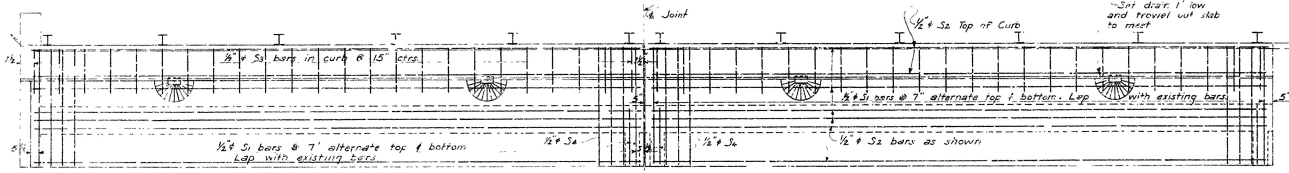


NO.	DATE	BY	REVISION	SHEET	TOTAL
6	5-13-54			6	22
JOB NO.	9345				

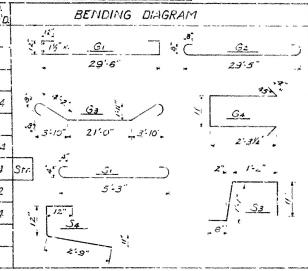


LONGITUDINAL SECTION OF GIRDER AND SLAB



PLAN

BAR LIST (All 30' Spans)			
MARK	SIZE	LENGTH	NO. REQD.
G1	1"	33'-3"	32
G2	1"	31'-5"	16
G3	1"	31'-4"	16
G4	1"	6'-3"	344
S1	1/2"	6'-2"	104
S2	1/2"	29'-3"	64
S3	1/2"	9'-8"	192
S4	1/2"	4'-9"	24



GENERAL NOTES

The work contemplated consists of widening the existing overpass structure on both sides of roadway and removing and replacing handrail on both sides. For requirements in conducting the work of remodeling existing overpass see Special Provision "Remodeling Existing Bridges and Maintenance of Traffic".

All dimensions relating to existing overpass are to be verified in the field. Drawings showing details of existing structure are for information only.

In existing grade on widened portion of spans and piers, dimensions shown take precedence over elevations. All concrete to be the class called for on the individual details and shall be poured in the dry. All exposed corners to have 1/4" chamfer unless otherwise noted.

Reinforcing steel is to be deformed bars of Intermediate or Hard grade (See Special Provision 803-5). Reinforcing steel is to be held in place by means of steel wire supports, sufficient in size and number to properly support the steel in the forms. These supports will not be paid for directly, but will be considered as subsidiary to the item Reinforcing Steel.

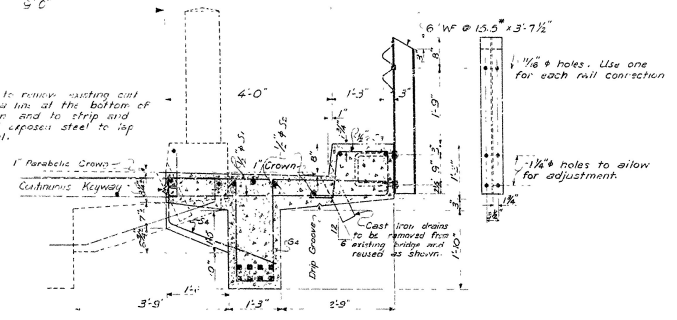
Dimensions relating to reinforcing steel are to centers of bars.

Shop lists and bending diagrams of reinforcing steel, including steel wire supports, must be submitted and approved before fabrication is begun.

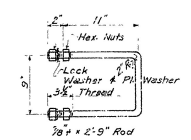
Weight of 5" Steel Bearings, including anchor rods, is included in weight shown for "Reinforcing Steel".

The Steel Plate Guard Rail is to be of the type shown on the plans or an equivalent rigid type as approved by the Engineer. The Steel Plate Guard Rail, including steel posts, all fastenings rail to posts and posts to curbs, is to be paid for by price bid or linear foot for Steel Plate Guard Rail (10 gal).

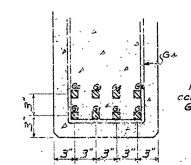
Specifications of Arkansas State Highway Commission Standard Specifications for Road & Bridge Construction adopted March 1st, 1940.



SECTION A-A



RAIL POST ANCHOR ROD

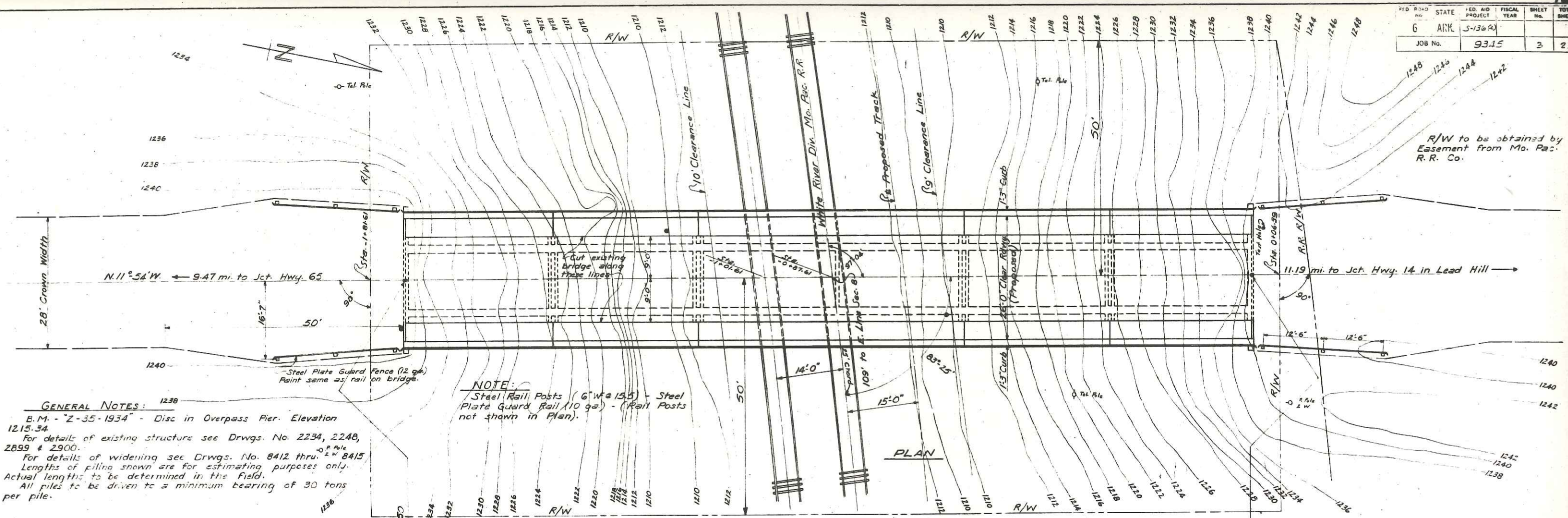


DETAIL OF STEEL AT MID-SPAN

DETAILS OF WIDENING
30'-0" SPAN
MO. PAC. R.R. OVERPASS
BERGMAN-LEAD HILL
BOONE COUNTY
ROUTE 43 SEC. 3

ARKANSAS STATE HIGHWAY COMMISSION
LITTLE ROCK, ARK.
Drawn By B.R. Date 11-24-53 Scale: 3/4" = 1'-0"
Traced By F.E.S. Date 1-18-54
Checked By F.E.S. Date 1-18-54
BRIDGE NO. 1003 DRAWING NO. 8414

Revised (B.R.) 1-23-54 Keyways
W.D. B. Design Engineer



GENERAL NOTES:

B.M. - "Z-35-1934" - Disc in Overpass Pier. Elevation 1215.34

For details of existing structure see Drwgs. No. 2234, 2248, 2899 & 2900.

For details of widening see Drwgs. No. 8412 thru. 8415.

Lengths of piling shown are for estimating purposes only. Actual lengths to be determined in the field.

All piles to be driven to a minimum bearing of 30 tons per pile.

NOTE:

Steel Rail Posts (6" W x 15.5") - Steel Plate Guard Rail (10 ga) - (Rail Posts not shown in Plan).

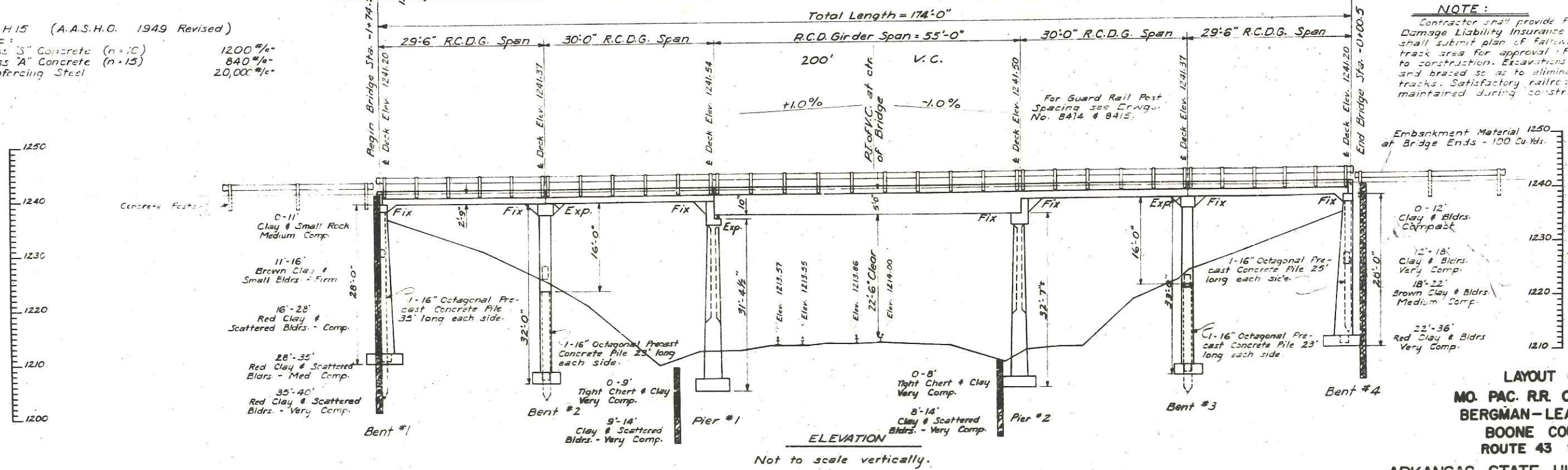
Loading - H-15 (A.A.S.H.O. 1949 Revised)

Stresses:

Class "S" Concrete (n=10)	1200 #/sq. in.
Class "A" Concrete (n=15)	840 #/sq. in.
Reinforcing Steel	20,000 #/sq. in.

NOTE:

Contractor shall provide Public Liability and Property Damage Liability Insurance (see Special Provisions), and shall submit plan of fallwork and scaffolding in the track area for approval of Railroad Company prior to construction. Excavations to be adequately sheeted and braced so as to eliminate damage to adjacent tracks. Satisfactory railroad clearances to be maintained during construction.



LAYOUT OF

MO. PAC. R.R. OVERPASS

BERGMAN-LEAD HILL

BOONE COUNTY

ROUTE 43 SEC. 3

ARKANSAS STATE HIGHWAY COMMISSION

LITTLE ROCK, ARK.

Drawn By B.R. Date 10-14-53 Scale 1 in. = 10 ft.

Traced By Date

Checked By F.R.B. Date 1-15-54

BRIDGE NO. 1003 DRAWING NO. 8411

Wend T. ...

Bridge Design Engineer