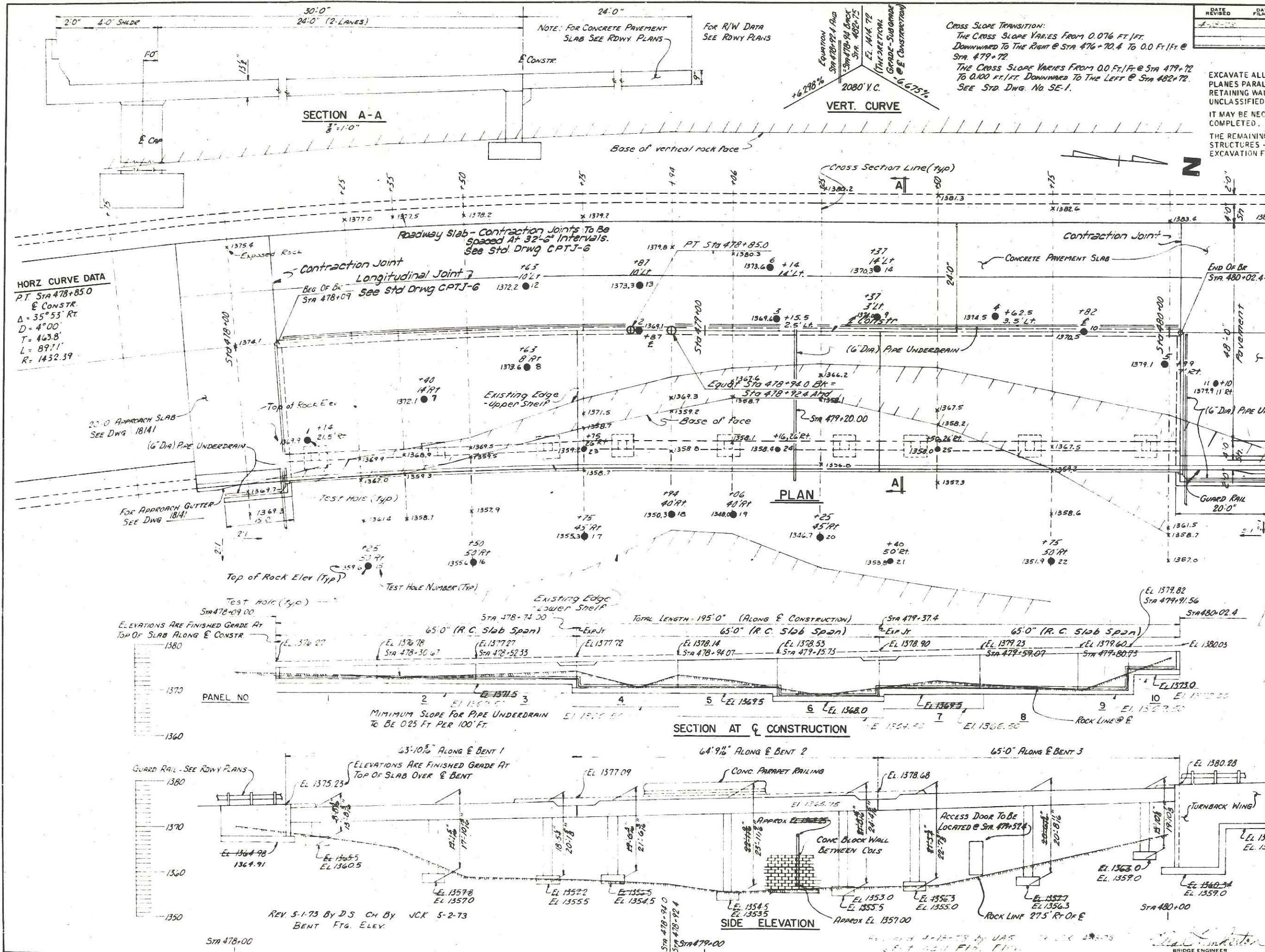


DATE REVISED	DATE FILMED	DATE REVISED	DATE FILMED	FED. ROAD NO.	STATE	FED. AID PROG.	FISCAL YEAR	SHEET NO.	TOTAL SHEETS
7-18-68				6	ARK.	EMP-FRA 025-371			
				JOB NO.	9431				

(1) 551R BR LAYOUT 1B122

EXCAVATE ALL MATERIAL THAT IS ABOVE ROCK WITHIN AN AREA BOUNDED BY VERTICAL PLANES PARALLEL TO AND 18 INCHES OUTSIDE THE FOOTINGS OF THE ABUTMENTS, RETAINING WALL AND THE BENTS AS SHOWN. THIS EXCAVATION TO BE PAID FOR AS UNCLASSIFIED EXCAVATION. SEE RDWY PLANS.

THE REMAINING EXCAVATION TO BE HANDLED AS PROVIDED FOR "ROCK EXCAVATION FOR STRUCTURES - BRIDGE" IN THE SPECIFICATIONS BUT WILL BE PAID FOR AS "UNCLASSIFIED EXCAVATION FOR STRUCTURES - ROADWAY".



GENERAL NOTES

REINCH MARK - NAIL IN SIDE OF POWER POLE 33' RT. STA. 491+36.
ELEV. 1390.91.

ALL FOOTINGS EXCEPT THE CONCRETE BLOCK WALL FOOTING SHALL BE SET A MINIMUM OF 1'-6" INTO ROCK. THE FOOTING FOR THE CONCRETE BLOCK WALL SHALL BE SET A MINIMUM OF 6" INTO ROCK. ROCK EXCAVATIONS SHALL BE MADE TO NEAR LEVELS OF CONCRETE FOOTINGS. CARE SHALL BE EXERCISED TO AVOID SHATTERING OF ROCK FACES BY EXCESSIVE BLASTING. CONCRETE IN FOOTINGS SHALL BE POURED DIRECTLY AGAINST EXCAVATED SLABEDS OR ROCK.

ALL CONCRETE SHALL BE POURED IN THE DRY.

FOR DETAILS OF ABUTMENTS, SEE DWG. NOS. 14130, 14131 & 14132.
FOR DETAILS OF RETAINING WALLS, SEE DWG. NOS. 14172, 14137, 14138 & 14139.
FOR DETAILS OF BENTS, SEE DWG. NO. 14133, 14134 & 14135.
FOR DETAILS OF SUPERSTRUCTURE, SEE DWG. NO. 14134.
FOR DETAILS OF APPROACH SLABS & GUTTERS, SEE DWG. NO. 14141.
FOR ELEVATIONS, SEE DWG. NO. 14140.

SPECIFICATIONS: ARKANSAS STATE HIGHWAY COMMISSION STANDARD SPECIFICATIONS FOR HIGHWAY CONSTRUCTION, EDITION OF 1959, THE 1966 SUPPLEMENTAL SPECIFICATIONS, AND APPLICABLE SPECIAL PROVISIONS.

DESIGN SPECIFICATION: AASHTO 1960
LIVE LOADING: HS20
UNIT STRESSES: CLASS 5 (OR 5.5) CONCRETE IN HO 1,700 PSI
REINFORCING STEEL 20,000 PSI

FOUNDATION PRESSURES:	MAX. CALCULATED	
RETAINING WALL	3.41 K/FT ²	(GROUP 1)
ABUTMENT	5.03 K/FT ²	(GROUP 1)
BENT	9.80 K/FT ²	(GROUP 1)

170.34
5620

FIELD CHANGE
LAYOUT OF BRIDGE
ON SOUTH MOUNTAIN
NORTH LESLIE - MARSHALL
SEARCY COUNTY
ROUTE 65 SEC. 6
ARKANSAS STATE HIGHWAY COMMISSION
LITTLE ROCK, ARK.

DRAWN BY: J.P.S. DATE: 12-1-72
 DESIGNED BY: F.H. DATE: 12-29-72
 CHECKED BY: A. DATE: 1-2-73

SCALE: 1"=10' 0" OR AS NOTED

BRIDGE NO. 5518 DRAWING NO. 18129