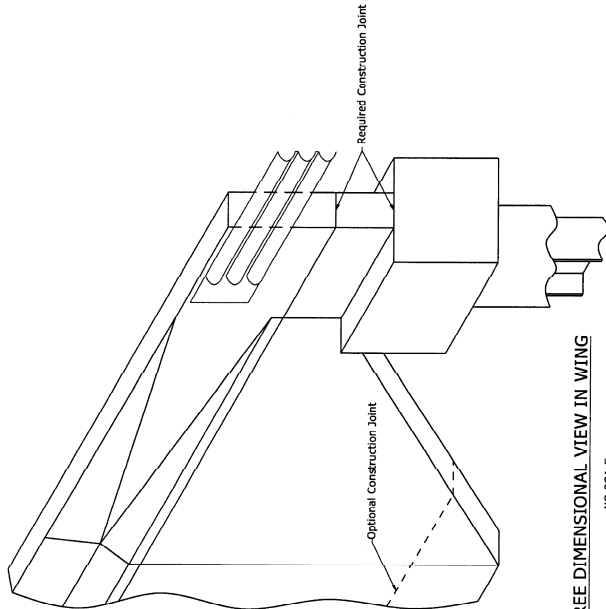
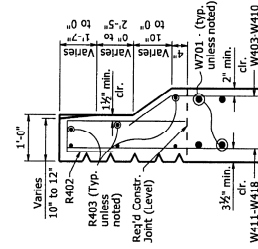
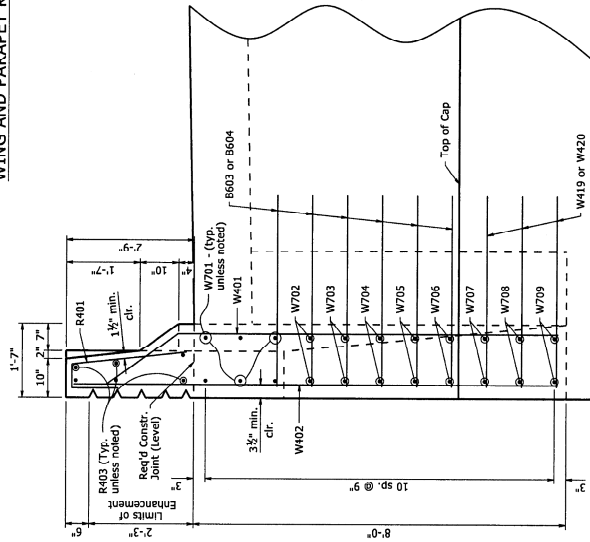
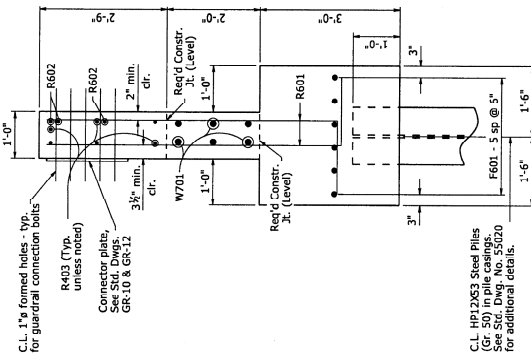
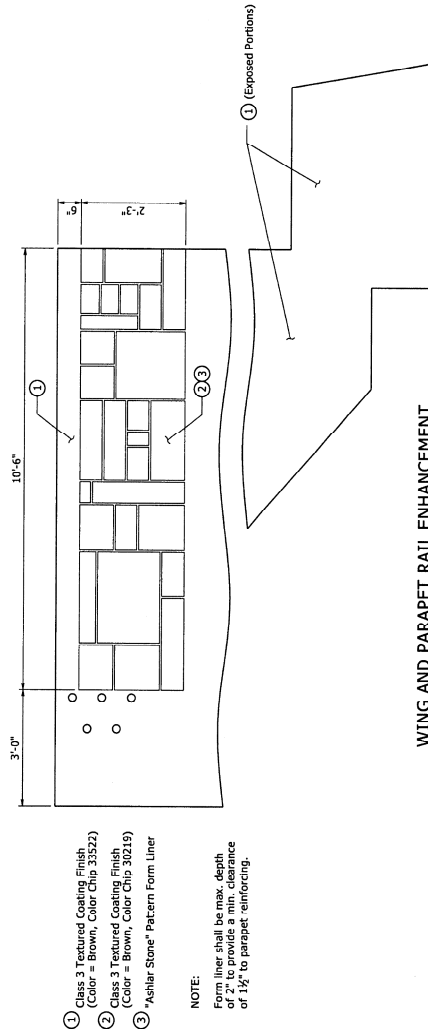


[illegible]

THREE DIMENSIONAL VIEW IN WING



WING AND PARAPET RAIL ENHANCEMENT



- ① Class 3 Textured Coating Finish
(Color = Brown, Color Chip 33522)
- ② Class 3 Textured Coating Finish
(Color = Brown, Color Chip 30219)
- ③ "Ashlar Stone" Pattern Form Liner

NOTE:

Form liner shall be max. depth of 2" to provide a min. clearance of 1½" to parapet reinforcing.

STATE OF ARKANSAS
 CHARLES E. ELLIS
 LICENSED PROFESSIONAL ENGINEER
 No. 9235

SHEET 4 OF 5
TAILS OF END BR
LANE OVER HIGH
ROUTE SEE
STATE HIGHWAY
LITTLE ROCK, ARK.

SHEET 4 OF 5
DETAILS OF END BENTS
DENISE LANE OVER HIGHWAY 7

SHEET 4 OF 5
DETAILS OF END BENTS
DENISE LANE OVER HIGHWAY 7

ROUTE SEC.
ARKANSAS STATE HIGHWAY COMMISSION
LITTLE ROCK, ARK.

ROUTE SEC.

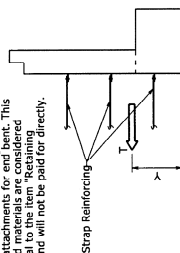
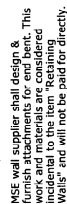
ARKANSAS STATE HIGHWAY COMMISSION
LITTLE ROCK, ARK.

DRAWN BY:	MCB	DATE:	07/25/2019	FILENAME:	b'60140x8_b1.dgn
CHECKED BY:	C.W.	DATE:	3/14/19	SCALE:	NO SCALE
DESIGNED BY:	MCB	DATE:	07/2/19		
BRIDGE NO.	07460			DRAWING NO.	61C55

DATE: 07/25/2019
DATE: 3/14/19

DESIGNED BY: MCB
BRIDGE NO. 07460

DRAWING NO. 61C55



T = Resultant force required to be resisted by strap reinforcing
Y = Centroid of resultant force

Limit State	(1) T Kips/Ft.	Y Ft.
Service	5.00	3.5
Strength	7.00	3.5

The provided loads do not include any additional loadings due to heavy construction on equipment such as cranes. If the Contractor anticipates bringing heavy construction equipment within 10' of the backwall, they shall coordinate with the MSE wall supplier to design strap reinforcing for the anticipated loadings. Tolerable horizontal backwall movement for all loading combinations is δ_{hw} at the Service Limit State. Design computations shall accompany the wall design submitted for review by the Engineer. See Special Provision Job No. R60140 "Retaining Walls" for additional information.

END BENT STRAP DETAIL

GENERAL NOTES:

Structural Steel in end bents shall be ASTM A709, Gr. 50W and shall be paid for as "Structural Steel in Plate Girder Spans (A709, Gr. 50W)".

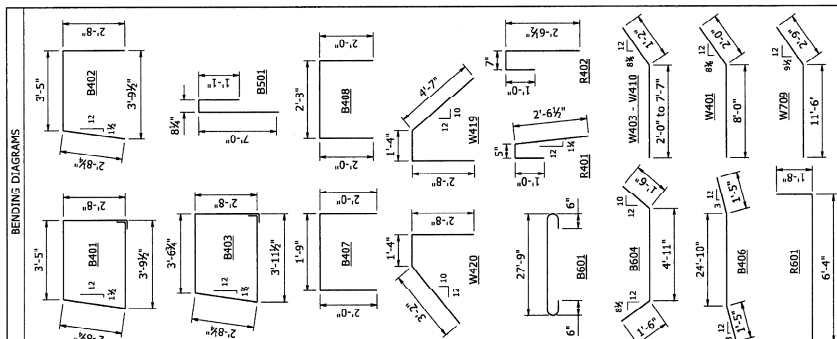
All piling shall be Grade 50. For details of steel piling, see Std. Dwg. No. 55020.

No portion of the backwall shall be poured before girders are in place. The portion of the backwall above the optional construction joint at the paving bracket shall not be placed until the adjacent deck pour has been made. Refer to the "EXPANSION DEVICE INSTALLATION AT END BENTS" note on STD. Dwg. No. 5530B. No heavy construction equipment shall be allowed within 10' of the backwall. The concrete deck and concrete parapets shall be constructed to meet MSE specifications. The backwall has been designed to accommodate these loads, see "END BENT STRAP DETAIL".

See Std. Dwg. No. 55006 for additional notes.

MARK	NO. REQ'D	LENGTH	P.D.
B401	33	12'-11"	2'
B402	15	8'-7"	2'
B403	2	13'-3"	2'
B404	4	27'-9"	Str.
B405	6	6'-5"	Str.
B406	14	27'-8"	2'
B407	16	5'-7"	2'
B408	16	6'-6"	2'
B501	50	8'-8"	2 1/2"
B502	50	5'-9"	Str.
B601	6	29'-1"	4 1/2"
B602	7	27'-9"	Str.
B603	6	6'-7"	Str.
B604	6	7'-11"	4 1/2"
R401	8	3'-11"	2'
R402	14	4'-0"	2'
R403	12	13'-2"	Str.
R601	24	7'-10"	Str.
R602	6	5'-0"	Str.
F601	12	2'-8"	Str.
W401	6	10'-0"	2'
W402	6	10'-5"	Str.
W403	2 each	3'-2" to 8'-9"	2'
W410	2 each	4'-5" to 10'-3"	Str.
W411	3	8'-6"	2'
W418	3	7'-1"	2'
W420	12	13'-2"	Str.
W701	4	9'-5"	Str.
W702	4	8'-6"	Str.
W703	4	7'-6"	Str.
W704	4	6'-7"	Str.
W705	4	5'-8"	Str.
W706	4	4'-9"	Str.
W707	4	4'-5"	Str.
W708	4	3'-9"	Str.
W709	4	14'-3"	5 1/4"

Dimensions are out to out of bars.



STATE OF
ARKANSAS
CHARLES E. WILLIAMS
LICENSED
PROFESSIONAL
ENGINEER
** **
No. 9235
Exp. 8/20/19
CHAS E WILLIAMS

SHEET 5 OF 5
DETAILS OF END BENTS
DENISE LANE OVER HIGHWAY 7

ROUTE SEC. ARKANSAS STATE HIGHWAY COMMISSION

PROGRAM BY: MCB DATE: 07/25/2019
 CHECKED BY: CMW DATE: 9/30/19
 SCALE: NO SCALE
 FILENAME: jrf0140x8_b1.dgn

DESIGNED BY: MCD DATE: 07/2013
BRIDGE NO. 07460 DRAWING NO. 60156

