

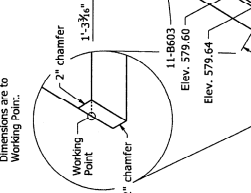




07459 - END 8ENTS - 61036

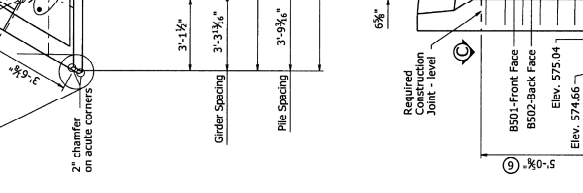
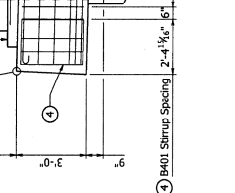
**NOTE:**

**NOTE:**



11-B603  
Elev. 579.60

lev. 579.64

[illegible]

PRINT DATE: 8/26/2019



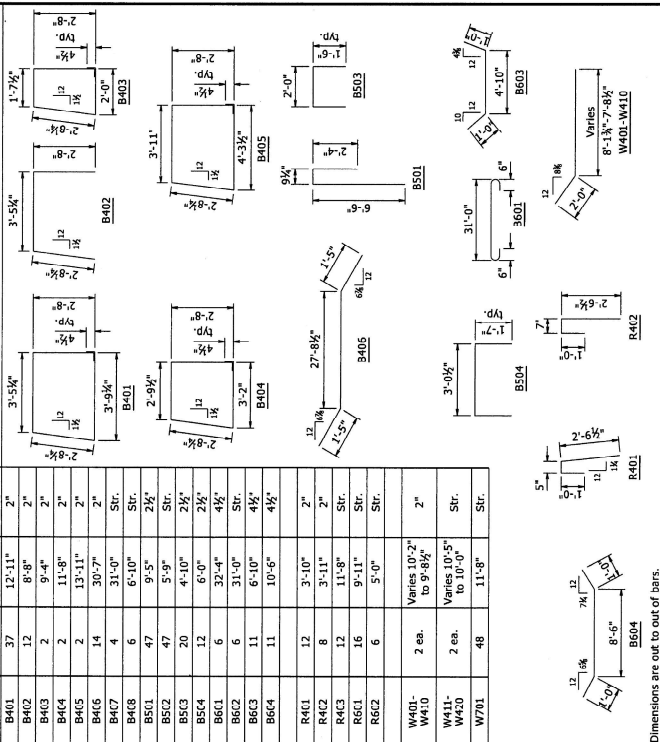




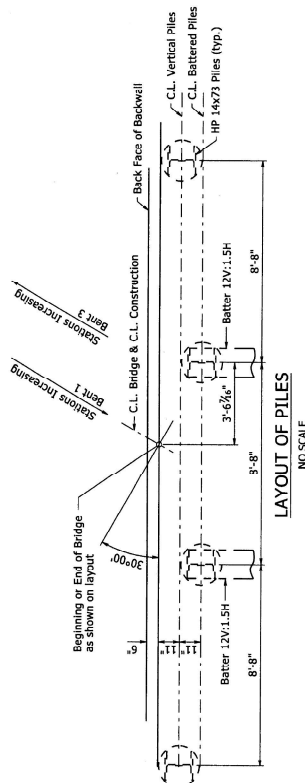
MARK	NO. REQ'D	LENGTH	P.D.
B401	37	12'-11"	2"
B402	12	8'-8"	2"
B403	2	9'-4"	2"
B404	2	11'-8"	2"
B405	2	13'-11"	2"
B406	14	30'-7"	2"
B407	4	31'-0"	Str.
B408	6	6'-10"	Str.
B501	47	9'-5"	2 1/2"
B502	47	5'-9"	Str.
B503	20	4'-10"	2 1/2"
B504	12	6'-0"	2 1/2"
B601	6	32'-4"	4 1/2"
B602	6	31'-0"	Str.
B603	11	6'-10"	4 1/2"
B604	11	10'-6"	4 1/2"
B401	12	3'-10"	2"
B402	8	3'-11"	2"
B403	12	11'-8"	Str.
B601	16	9'-11"	Str.
B602	6	5'-0"	Str.
W401- W410	2 ea.	Varies 10'-2" to 9'-8 1/2"	2"
W411- W420	2 ea.	Varies 10'-5" to 10'-0"	Str.
W701	48	11'-8"	Str.

**BAR LIST-PER BENT**

## ENDING DIAGRAMS



—  
Dimensions are out to out of bars.



**LAYOUT OF PILES**  
NO SCALE

A circular professional engineer seal for the State of Arkansas. The outer ring contains the text "STATE OF ARKANSAS" at the top and "CHARLES R. LITTLE" at the bottom. Inside the ring, the text "LICENSED PROFESSIONAL ENGINEER" is arranged vertically. To the right of this text is the license number "No. 9235" and the expiration date "8-14-99". The name "Charles R. Little" is written in cursive across the left side of the seal.

SHEET 3 OF 6  
DETAILS OF END BENTS  
MILL CREEK ROAD OVER HIGHWAY 7

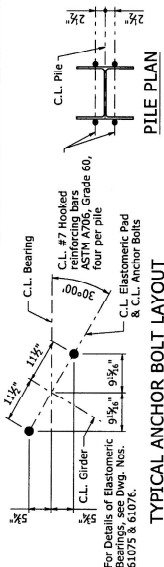
ROUTE  
 ARKANSAS STATE HIGHWAY COMMISSION  
 LITTLE ROCK, ARK.





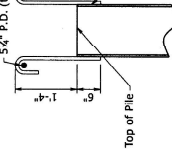


Welding shall comply with ANSI/AWS D1.4 Structural Welding Code-Reinforcing Steel and applicable portions of ANSI/AWS D1.5 Bridge Welding Code

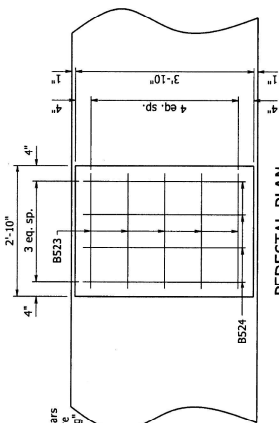


## PILE PLAN

0  
1  
2  
3  
4  
5  
6  
7  
8  
9  
A  
B  
C  
D  
E  
F  
G  
H  
I  
J  
K  
L  
M  
N  
O  
P  
Q  
R  
S  
T  
U  
V  
W  
X  
Y  
Z

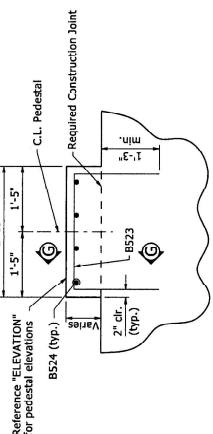


### TYPICAL PILE DETAILS

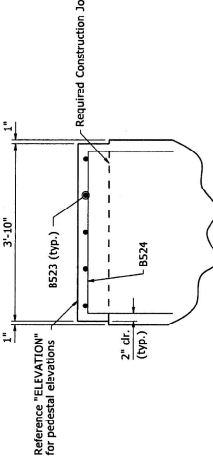
$$K^m = 1 - 0^m$$


PEDESTAL PLAN

0-1-4



### TYPICAL PEDESTAL DETAILS

$$\frac{3}{4}n = 110$$


SECTION G-G

$$x_n = 1 - 0^n = 1$$

SHEET 1 OF 2  
DETAILS OF INTERMEDIATE BENT  
MILL CREEK ROAD OVER HIGHWAY 7

ROUTE  
 ARKANSAS STATE HIGHWAY COMMISSION  
 SEC.  
 LITTLE ROCK, ARK.  
 DATE: 7/08/19  
 DRAWN BY: CGP  
 CHECKED BY: DJP  
 DESIGNED BY: DHP  
 SCALE: AS NOTED  
 FILENAME: b60140x7\_b2.dgn  
 DRAWING NO. 61(42)

DRAWING NO. 61(42

BRIDGE NO. 07459

**BRIDGE ENGINEER**

1

1

1

1

1

1

PRIN















Span	Point of Deflection	Structural Steel Shell			Structural Steel + Slab			Structural Steel + Slab + Parapet		
		Exterior	Interior	Exterior	Interior	Exterior	Interior			
Span 1	0.0	0.0000	0.0000	0.000	0.000	0.300	0.000			
	0.1	0.0000	0.0000	0.000	0.000	0.300	0.000			
	0.2	0.0000	0.0000	0.000	0.000	0.300	0.000			
	0.3	0.0000	0.0000	0.000	0.000	0.300	0.000			
	0.4	0.0000	0.0000	0.000	0.000	0.300	0.000			
	0.5	0.0000	0.0000	0.000	0.000	0.300	0.000			
	0.6	0.0000	0.0000	0.000	0.000	0.300	0.000			
	0.7	0.0000	0.0000	0.000	0.000	0.300	0.000			
	0.8	0.0000	0.0000	0.000	0.000	0.300	0.000			
	0.9	0.0000	0.0000	0.000	0.000	0.300	0.000			
Span 2	0.0	0.0000	0.0000	0.000	0.000	0.300	0.000			
	0.1	0.0000	0.0000	0.000	0.000	0.300	0.000			
	0.2	0.0000	0.0000	0.000	0.000	0.300	0.000			
	0.3	0.0000	0.0000	0.000	0.000	0.300	0.000			
	0.4	0.0000	0.0000	0.000	0.000	0.300	0.000			
	0.5	0.0000	0.0000	0.000	0.000	0.300	0.000			
	0.6	0.0000	0.0000	0.000	0.000	0.300	0.000			
	0.7	0.0000	0.0000	0.000	0.000	0.300	0.000			
	0.8	0.0000	0.0000	0.000	0.000	0.300	0.000			
	0.9	0.0000	0.0000	0.000	0.000	0.300	0.000			

DEAD LOAD DEFLECTION DIAGRAM  
NO SCALE

Span 1

Span 2

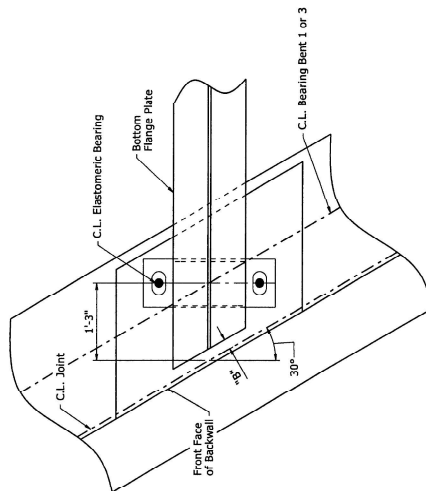
0.0 0.1 0.2 0.3 0.4 0.5 0.6 0.7 0.8 0.9

0.0 0.1 0.2 0.3 0.4 0.5 0.6 0.7 0.8 0.9

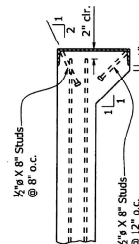
NO SCALE

Bent No.	"A" x "B" Width perpendicular joint at 24 hour average temperature of: (1)			"C" x "D" Width Perpendicular Joint at 50°F	Bumper Plate Size
	40°F	60°F	80°F		
1	2 1/2"	2"	1 3/4"		1" X 1"
4	2 3/4"	2"	1 3/4"		1" X 1"

① The temperature used to set the joint opening shall be the approximate average air temperature during the 24 hour period immediately before the bolts are tightened. The Engineer shall establish the temperature. Interpolation of the table may be necessary.



1"=1'-0"



## DETAILS OF ALTERNATE ANCHORS AND PLACEMENT OF LONGITUDINAL REINFORCEMENT

SHEET 5 OF 5  
DETAILS OF 195'-0" CONTINUOUS  
PLATE GIRDER UNIT  
ILL CREEK ROAD OVER HIGHWAY 7

A circular professional engineer seal for the State of Arkansas. The outer ring contains the text "STATE OF ARKANSAS" on the left and "CHARLES R. ELIE" on the right. The inner circle contains the text "LICENSED PROFESSIONAL ENGINEER" in the center, "No. 9236" on the left, and "8/20/19" on the right. The signature "Charles R. Elie" is written across the seal.

BRIDGE NO. 07459	DRAWING NO. 61049
DESIGNED BY: KJT	DATE: 8/29/19
CHECKED BY: KJT	DATE: 7/30/19
CGP/DPT	FLENAMES: tr60140x7_sl.dgn
DRAWN BY:	SCALE: AS NOTED
CUTLE ROCK, AREA.	

**BRIDGE ENGINEER**