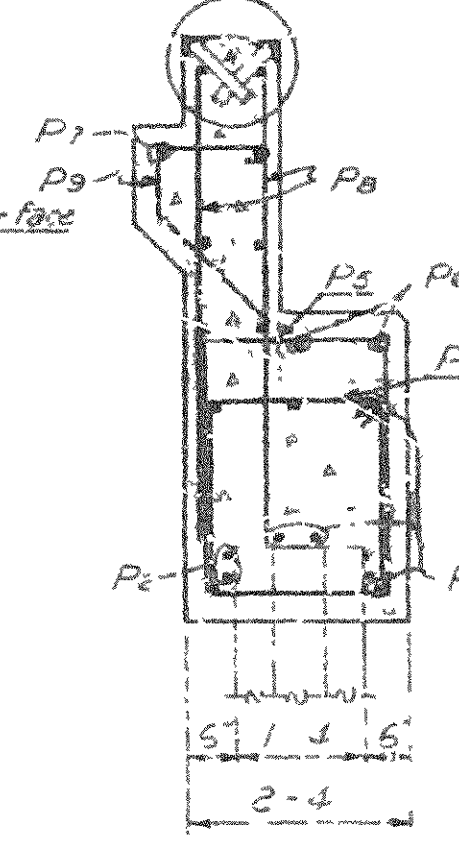
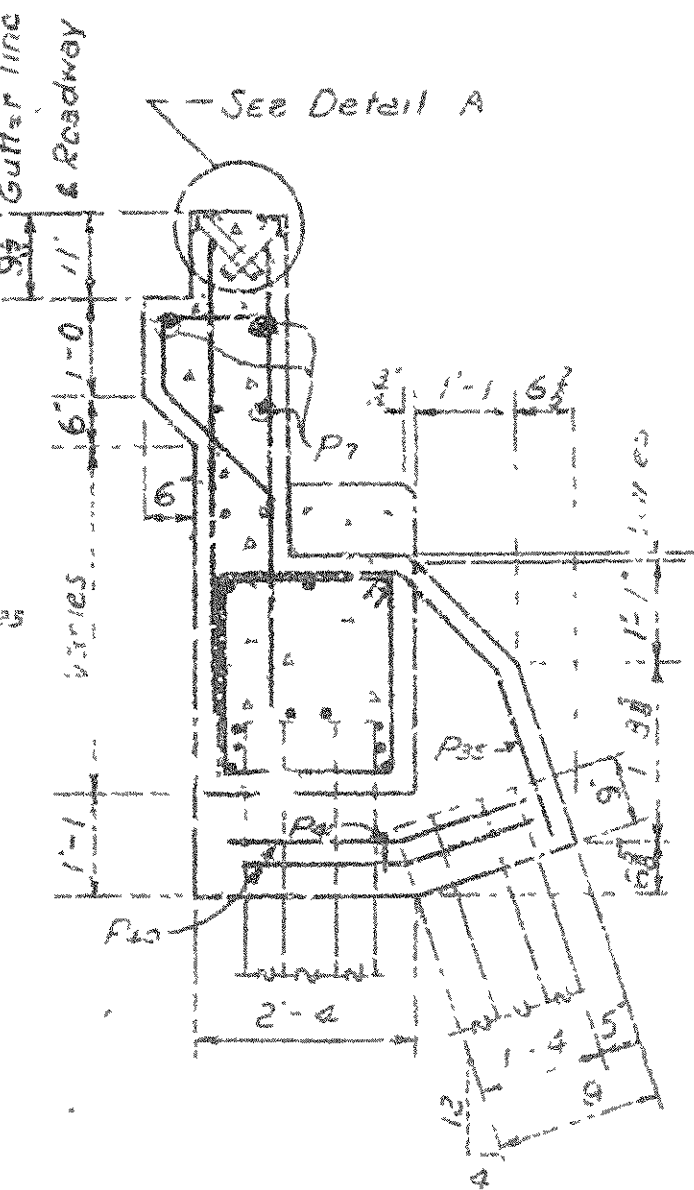


DETAIL A  
Scale 1" = 1'-0"



Notes:  
All concrete to be Class 5. All exposed surfaces have to be chamfered unless otherwise stated.  
All piles to be 16" concrete filled metal helix or 8" octagonal precast.  
Turnout Posts used with Aluminium Bridge railing are to be made of 4" dia x 10' to Class 5 concrete.  
Bar-sets to be 2" dia x 10' to Class 5 concrete.  
Bridge 30' from main road.  
To show 4' from main road to 30'.



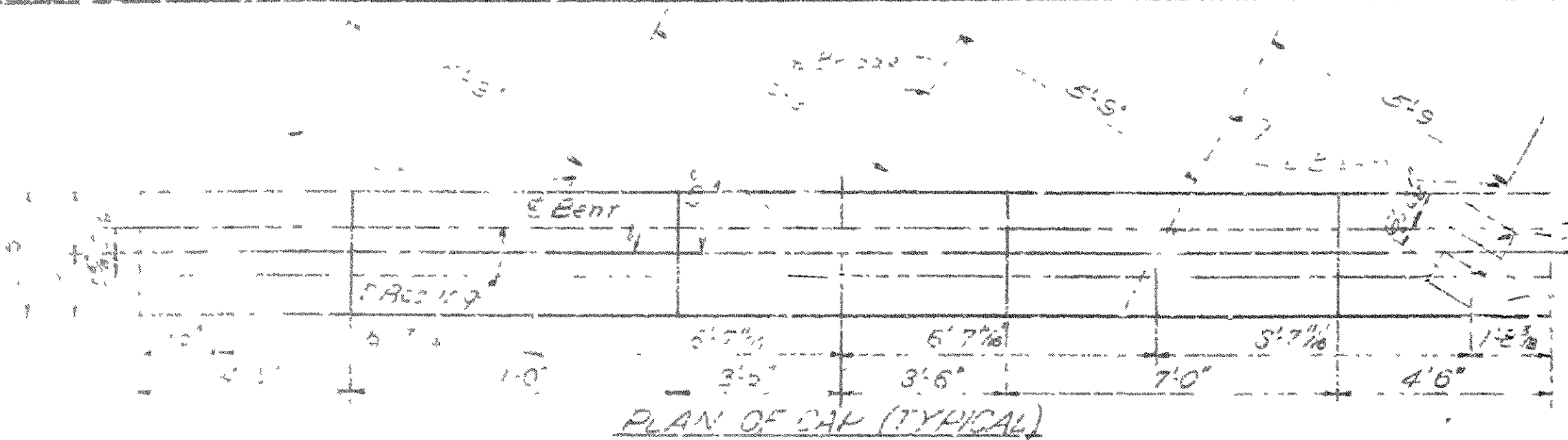
SECTION B-E

ARKANSAS STATE HIGHWAY COMMISSION  
LITTLE ROCK, ARK.

DRAWN BY        DATE        1/2 x 1'-0" AT NO. 10705  
 TRACED BY        DATE        SCALE         
 CHECKED        DATE         
 BRIDGE NO. 3670 DRAWING NO. 10705

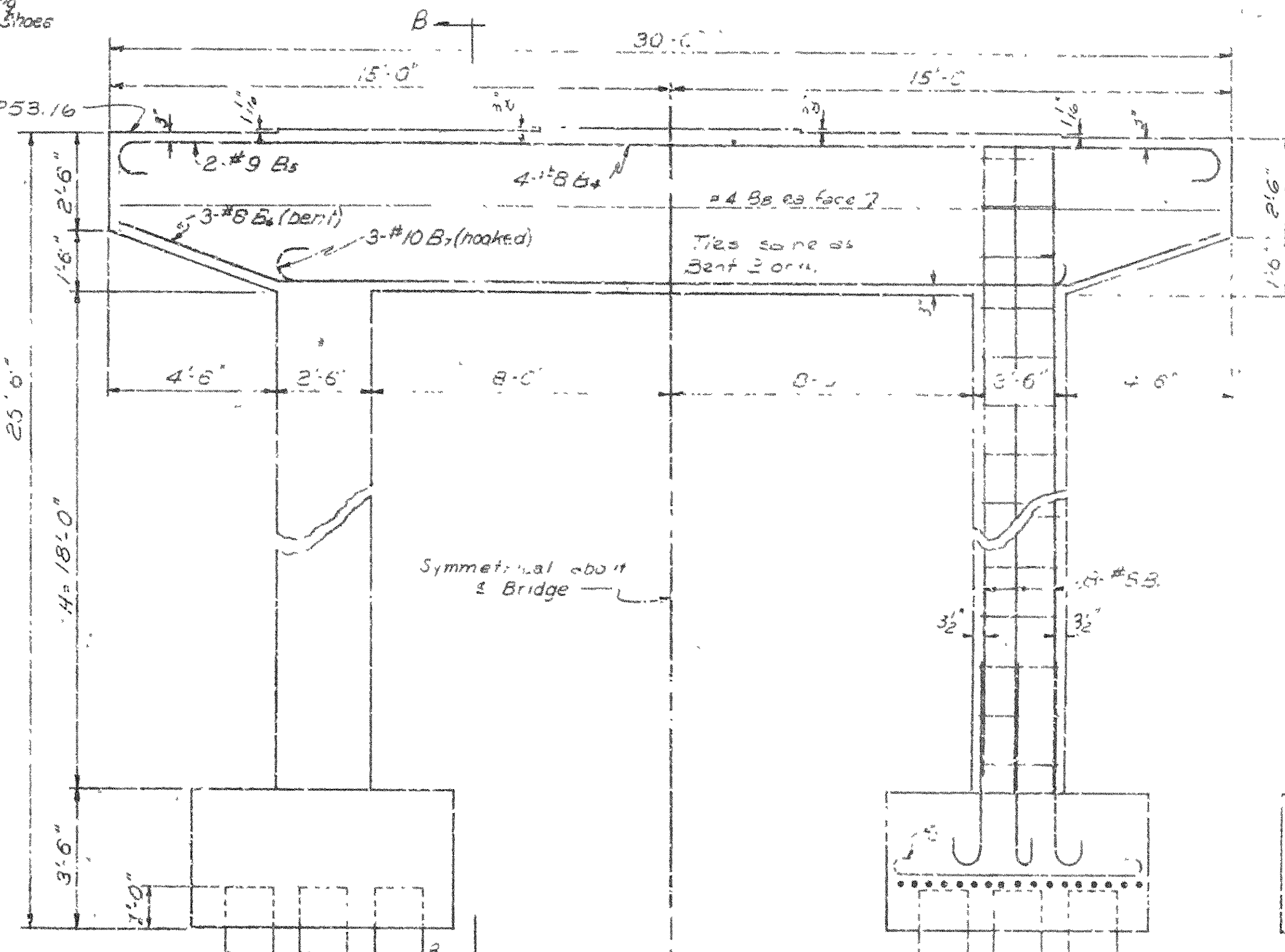


Note: Class S Concrete to be used in caps.  
Class A Concrete to be used in footings  
and columns. Chamfer all exposed  
corners  $\frac{3}{4}$  unless otherwise noted.

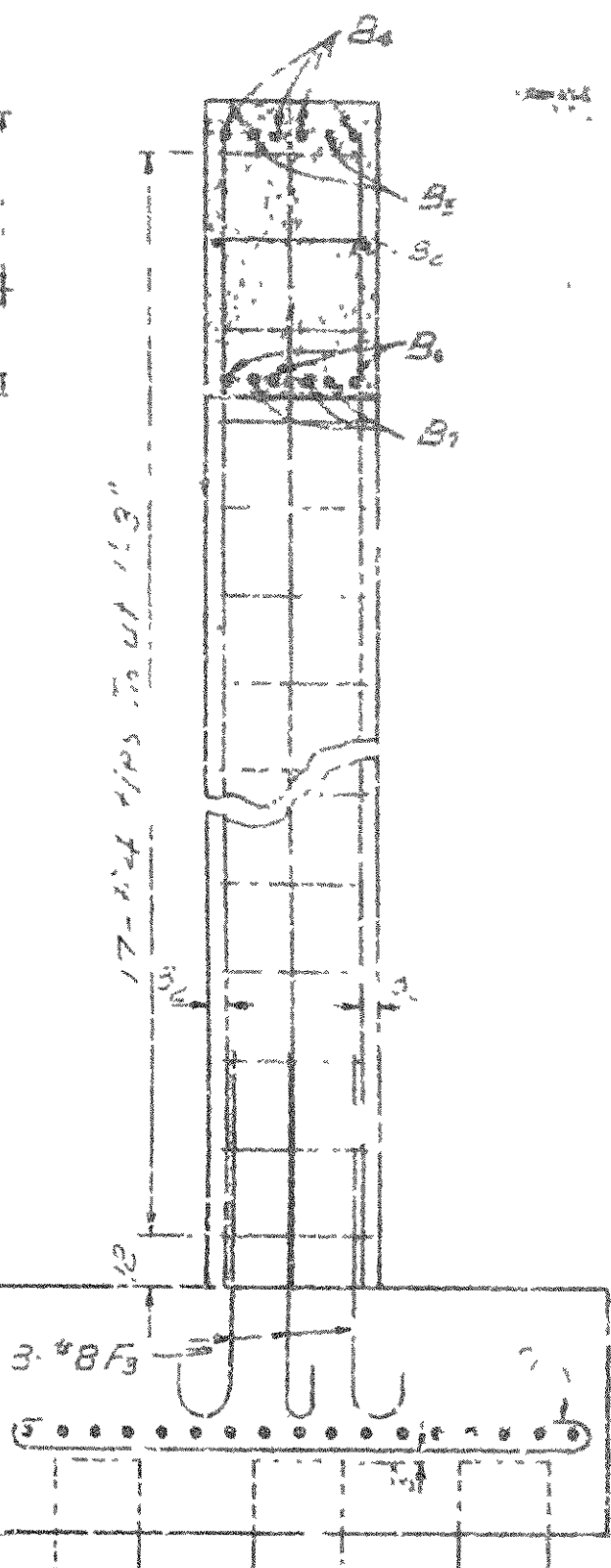


See Layout for placing  
Fixed and Expansion Shoes

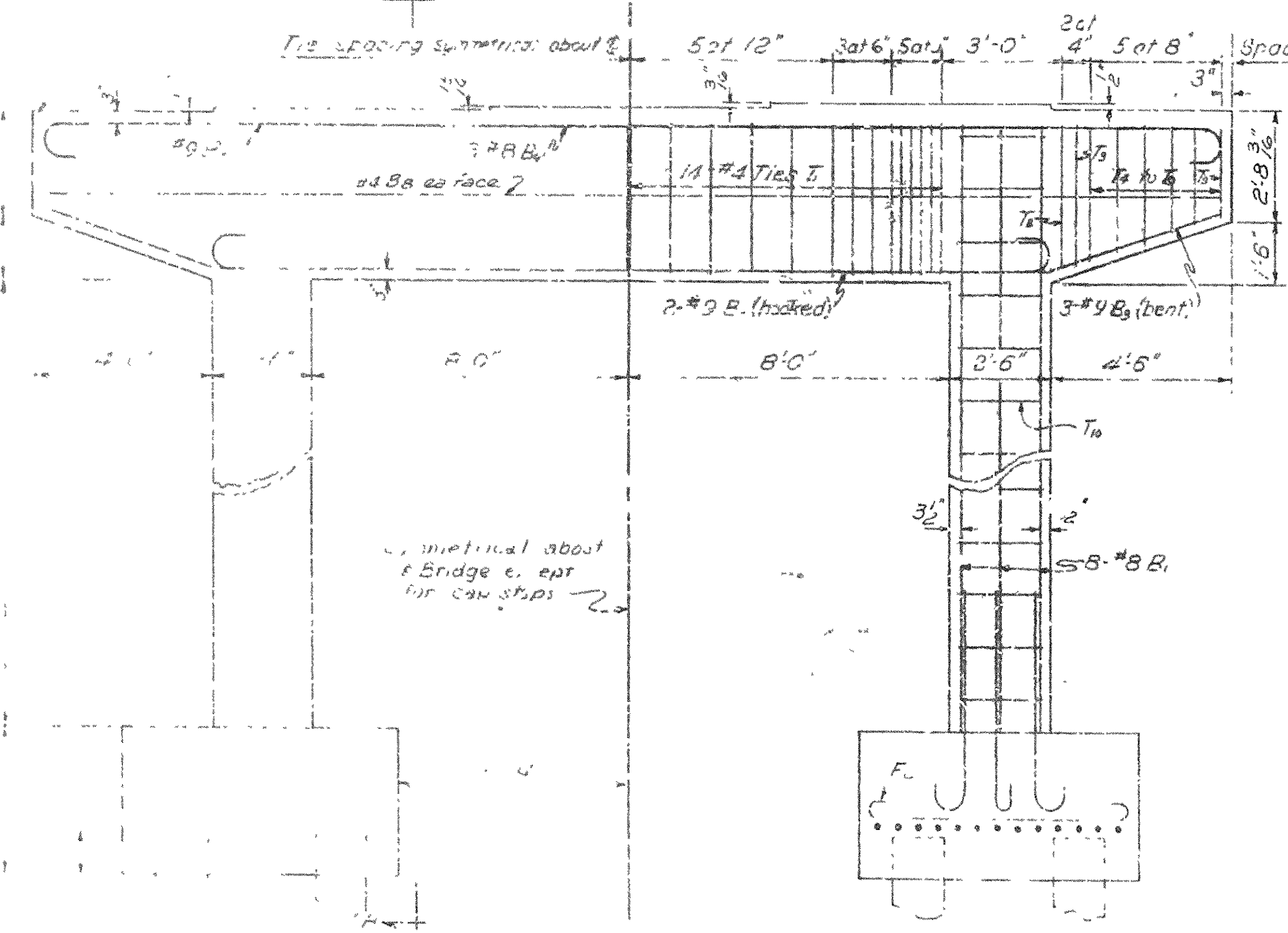
Elev. 253.16



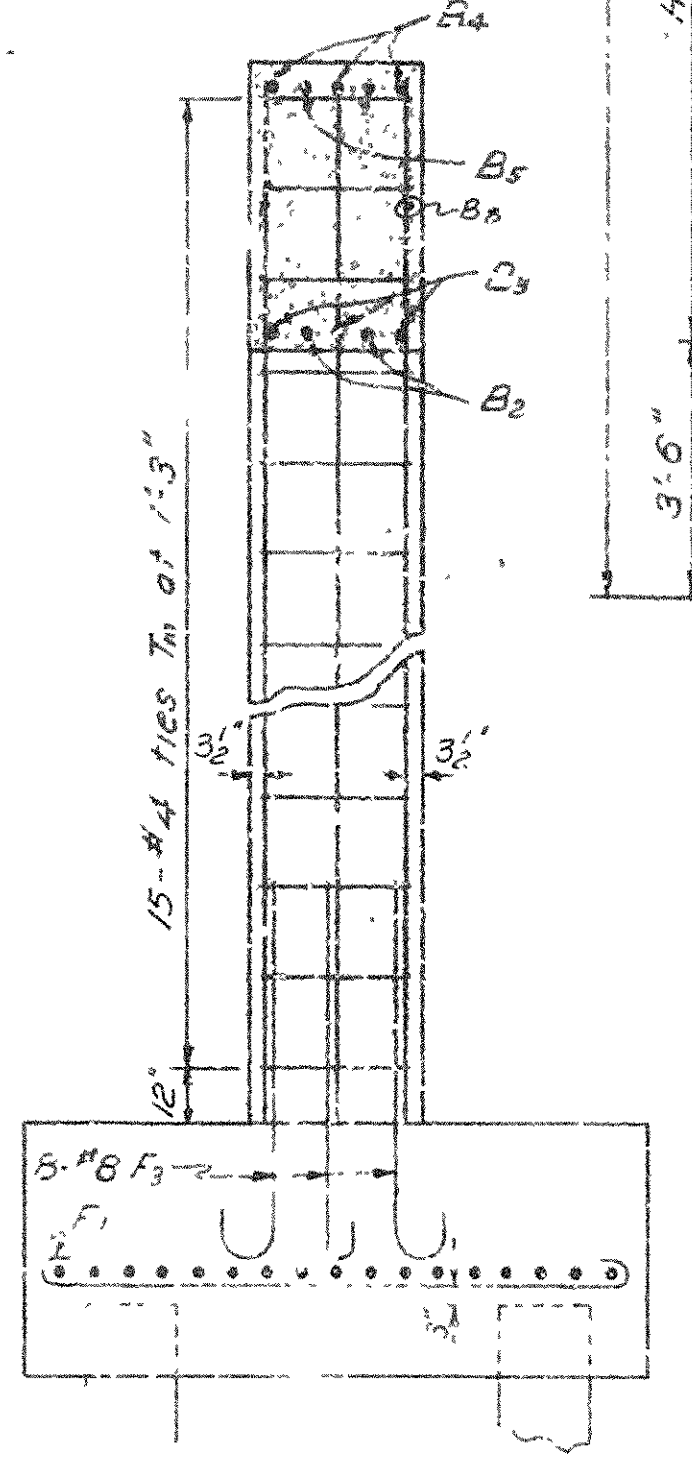
ELEVATION - BENT 2



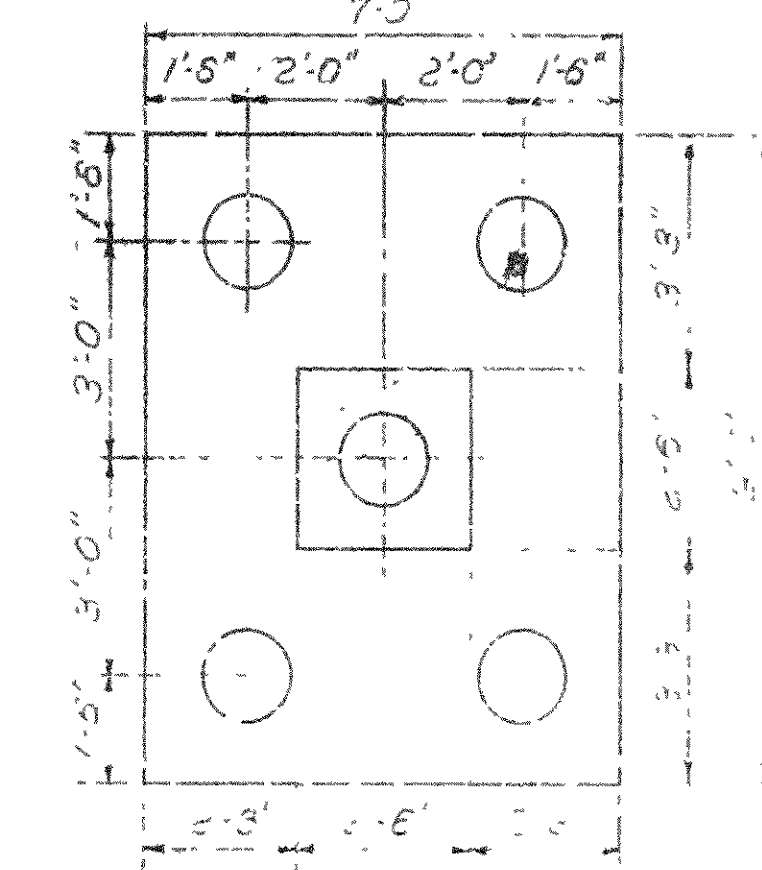
SECTION



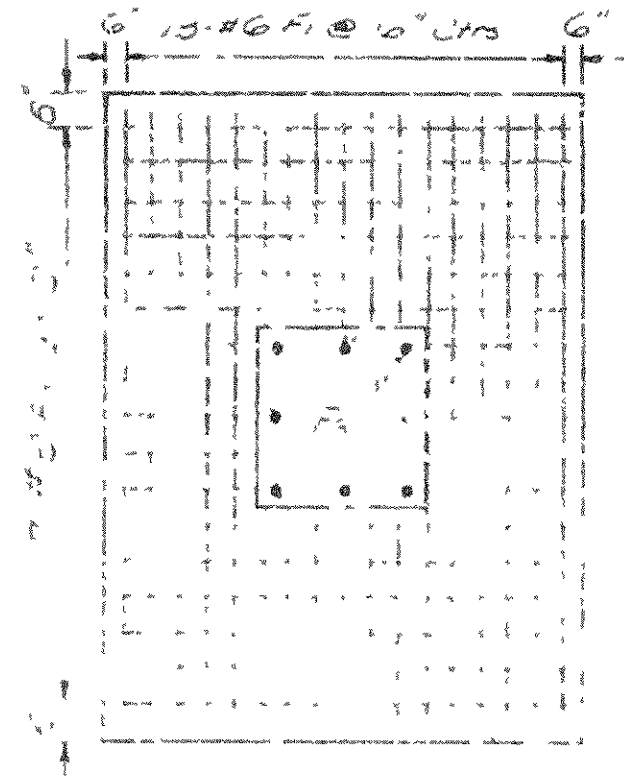
LOOKING FORWARD  
LOOKING BACKWARD



SECTION - A



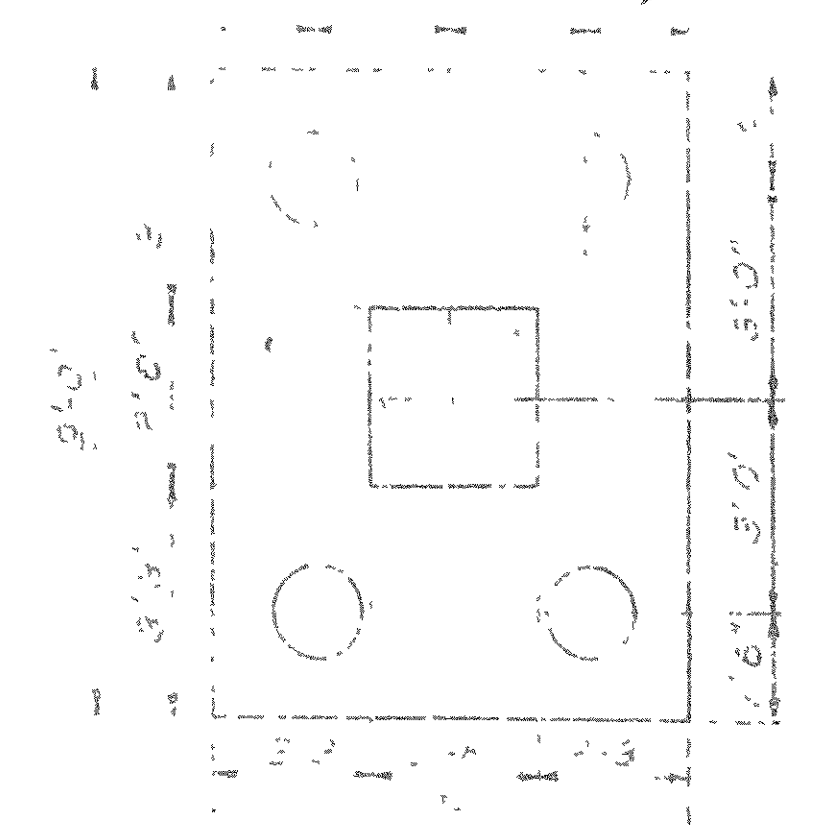
PLAN OF FOOTING BENT 2



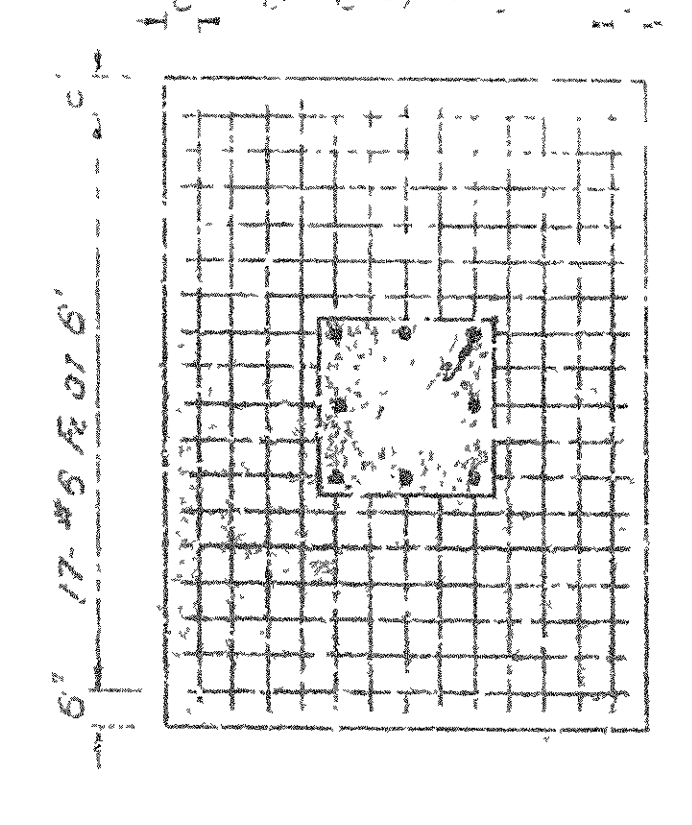
PLAN OF FOOTING BENT 2

Note: For details of footing see drawing  
SA-25 see drawing 14990

Note: This dwg adapted from drawing  
no. 980



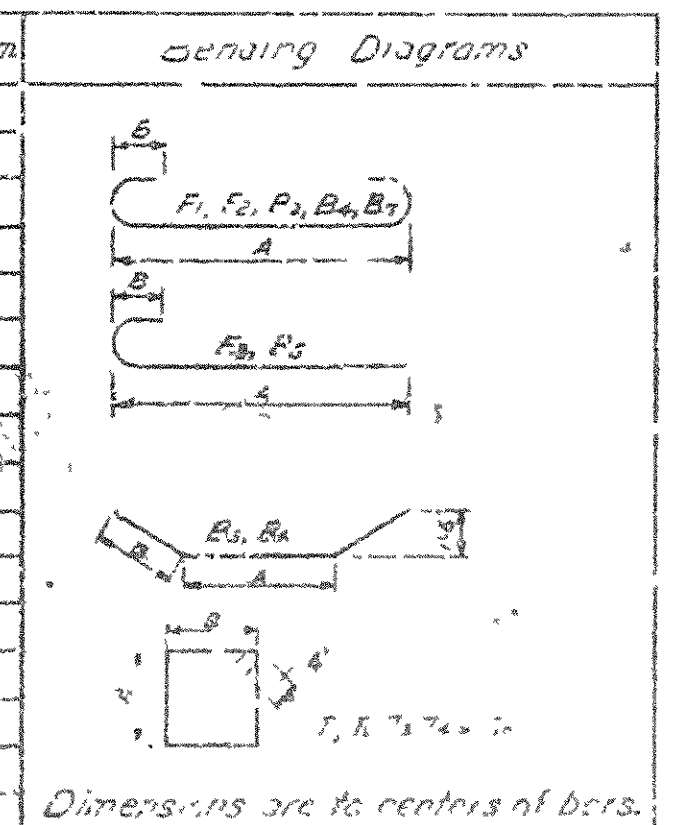
PLAN OF FOOTING BENT 2



PLAN OF FOOTING BENT 2

BAR LIST - PER BENT

Mark	Size	Number per Bent	Length	A	B	Pin Diam	Bending Diagrams
F <sub>1</sub>	#6	26	26	21'-1"	8'-6"	6"	4 1/2"
F <sub>2</sub>	#6	34	34	21'-1"	8'-6"	6"	4 1/2"
F <sub>3</sub>	#8	16	16	8'-8"	5'-7"	9"	8"
B <sub>1</sub>	#4	2	2	28'-6"	-	-	Str.
B <sub>2</sub>	#8	16	16	41'-3 1/2"	-	-	Str.
B <sub>3</sub>	#9	2	2	23'-8"	21'-0"	10"	9"
B <sub>4</sub>	#9	3	3	30'-2"	21'-0"	10"	9"
B <sub>5</sub>	#8	3	3	31'-9"	23'-3"	9"	8"
B <sub>6</sub>	#9	4	4	18'-3"	11'-0"	10"	9"
B <sub>7</sub>	#8	-	-	30'-2"	21'-0"	10"	9"
B <sub>8</sub>	#10	-	-	33'-5"	21'-0"	11"	10"
F <sub>4</sub>	#4	27	27	12'-1"	3'-7 1/2"	2 1/2"	1 1/2"
F <sub>5</sub>	#4	2	2	11'-11"	5'-6 1/2"	2 1/2"	1 1/2"
F <sub>6</sub>	#4	2	2	11'-8"	3'-5 1/2"	2 1/2"	1 1/2"
F <sub>7</sub>	#4	200	200	10'-5 1/2"	5'-4 1/2"	2 1/2"	1 1/2"
F <sub>8</sub>	#4	30	30	3'-11"	2'-1"	2 1/2"	1 1/2"



DETAILS OF INTERMEDIATE BENTS  
NEW BETHEL UNDERPASS  
LONOKE CO. LINE - HAZEN  
PRAIRIE COUNTY  
INT. ROUTE 40 SEC. 4  
ARKANSAS STATE HIGHWAY COMMISSION  
LITTLE ROCK, ARK.

DRAWN BY: G.E. DATE: 5-7-66  
TRACED BY: DATE:  
CHECKED BY: DATE:  
BRIDGE NO. 3670 DRAWING NO. 51



[illegible][illegible]

Specifications for Highway Construction  
Edition of 1959.

Web tapered from edge of Coped Joist to edge of bottom plate.  
3/8" thick stiffener on side of Beam. Buildings are

They have different  
the height. (See  
accompanying drawings.)

8 thick stirrups on  
side of web to flg.  
edge.

Web 12

Use when Difference in (e Height) is Less Than 5"  
Difference in (e Height) is 5 or More.

U.S. COMMON TO STANDARD 35'-90'

20' 24' 26' 28' & 40' ROADWAYS

ARKANSAS STATE HIGHWAY COMMISSION

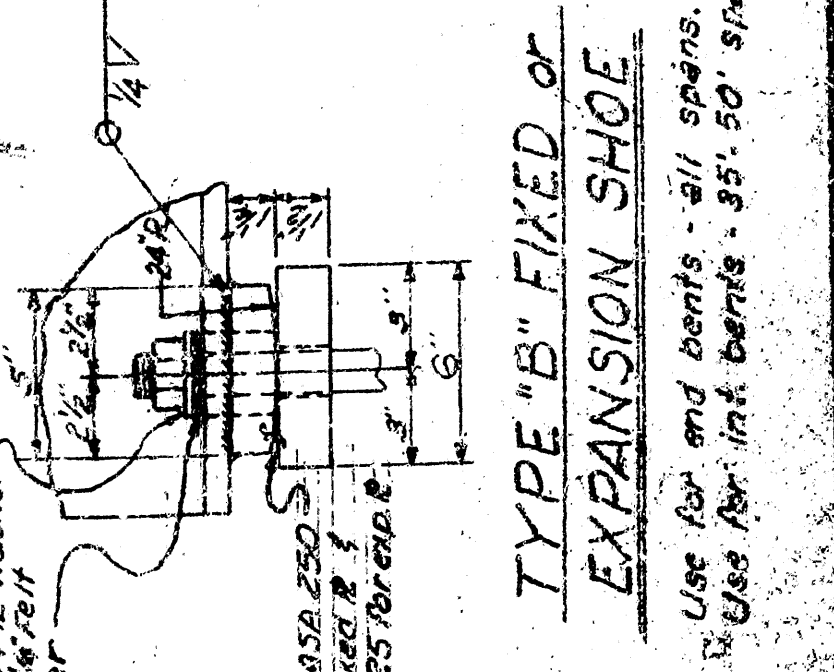
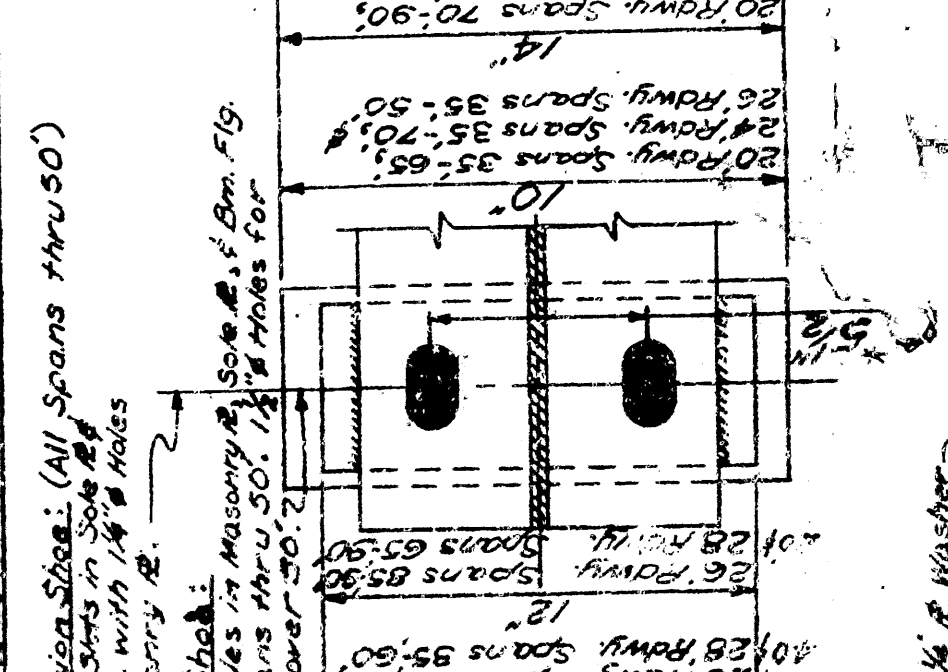
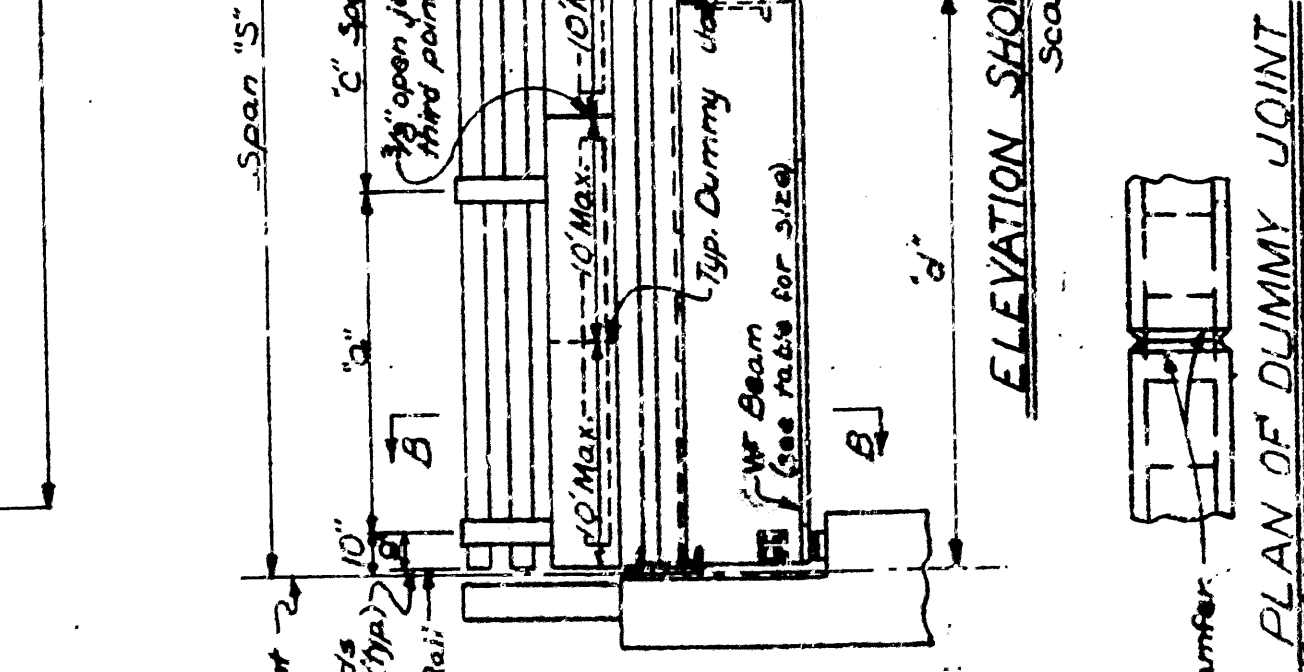
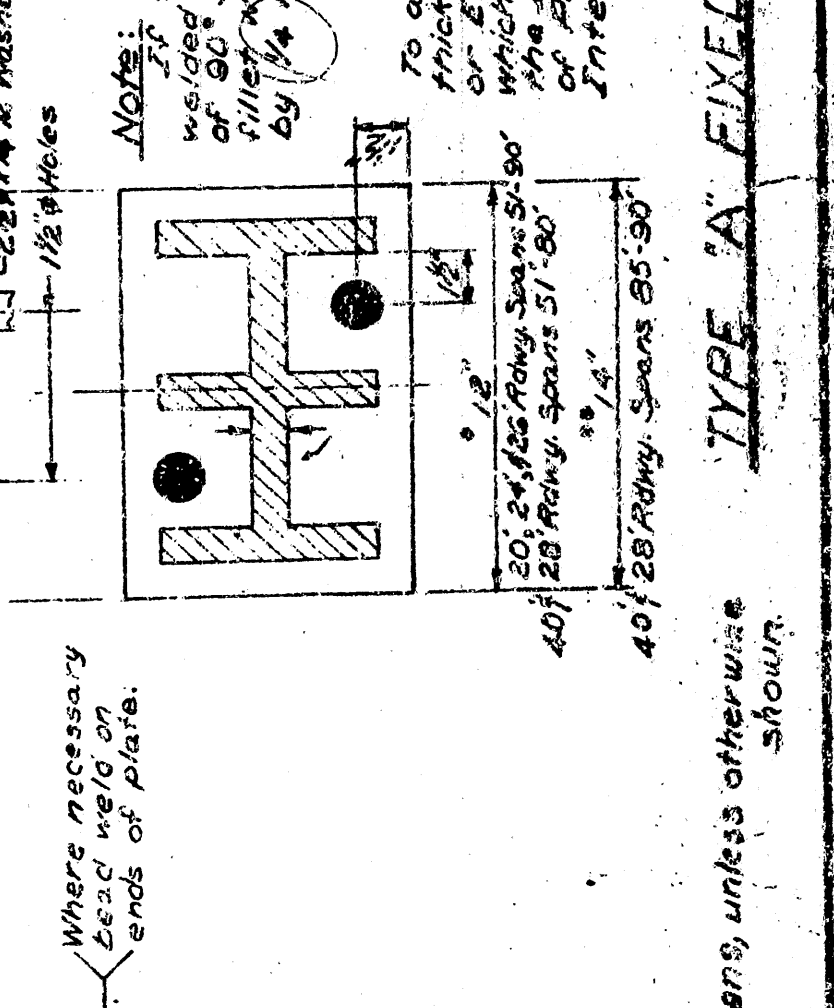
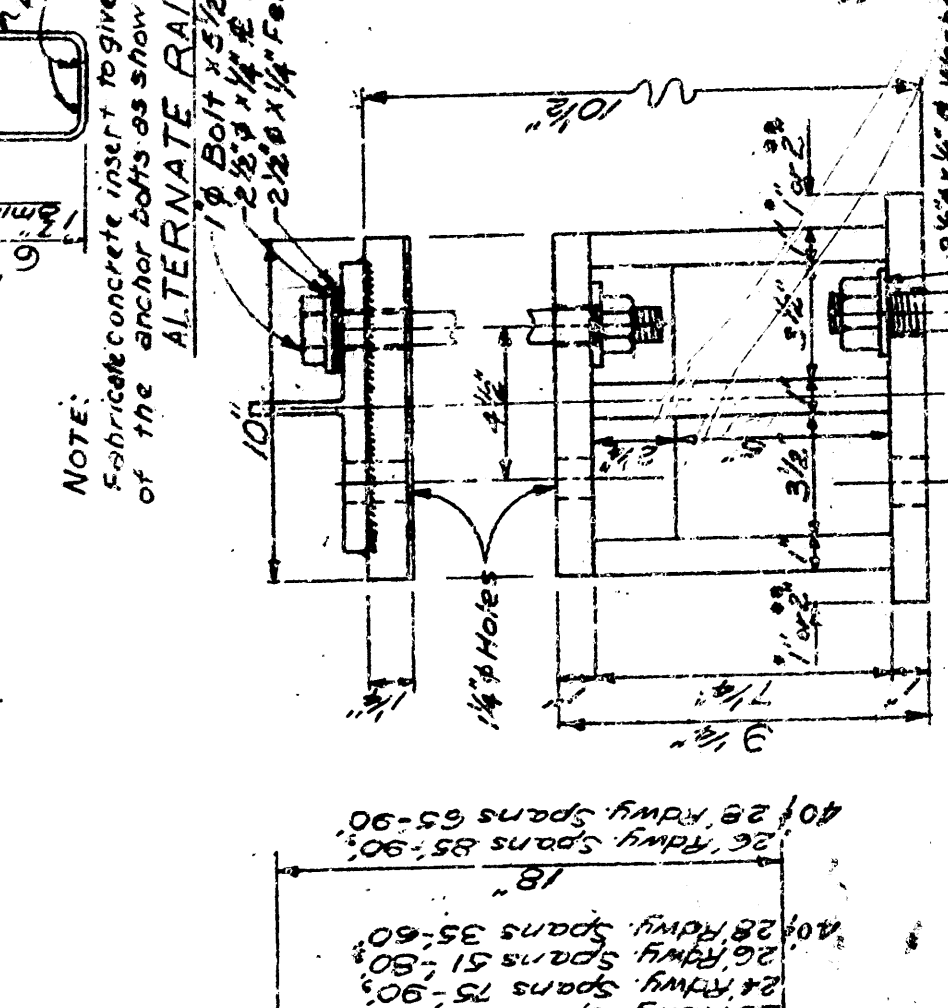
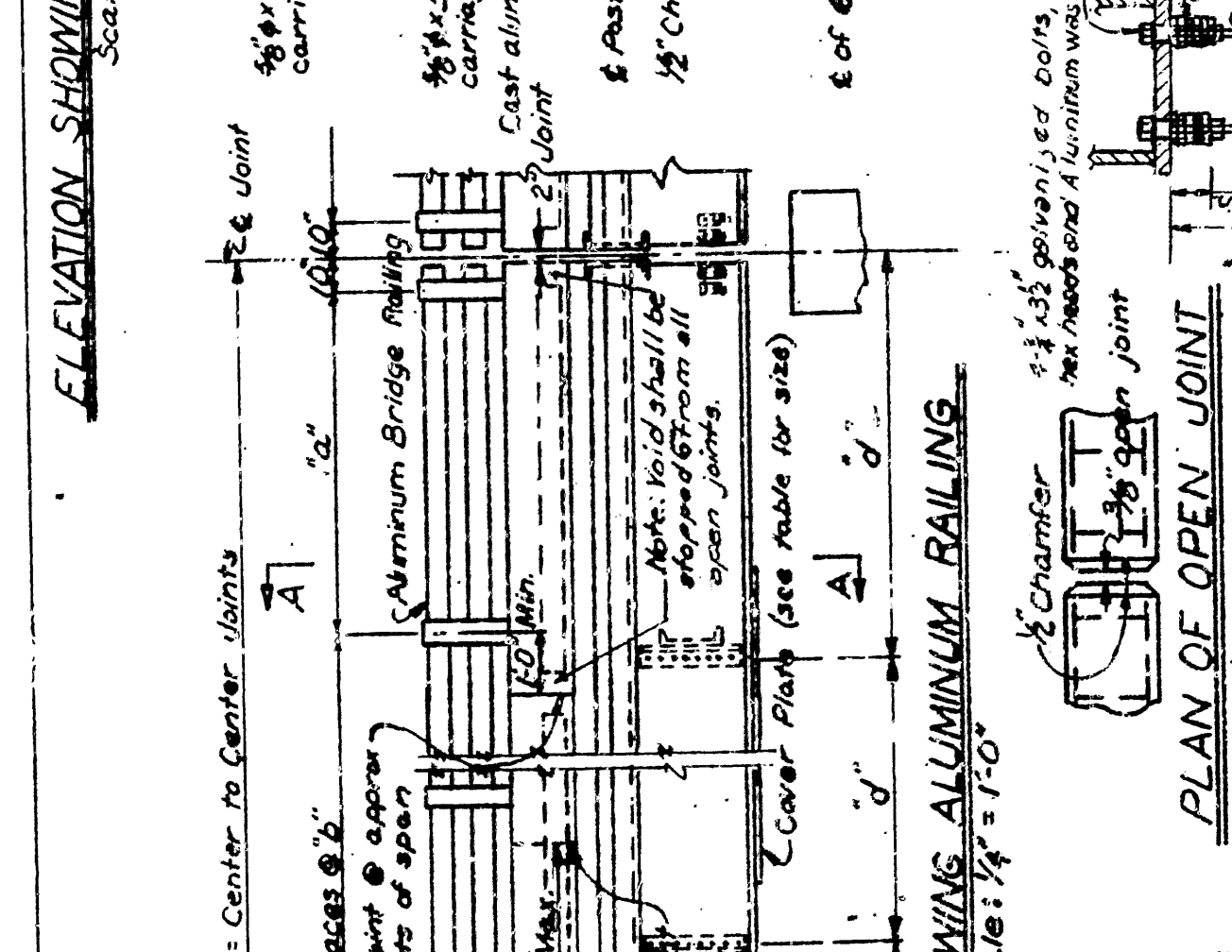
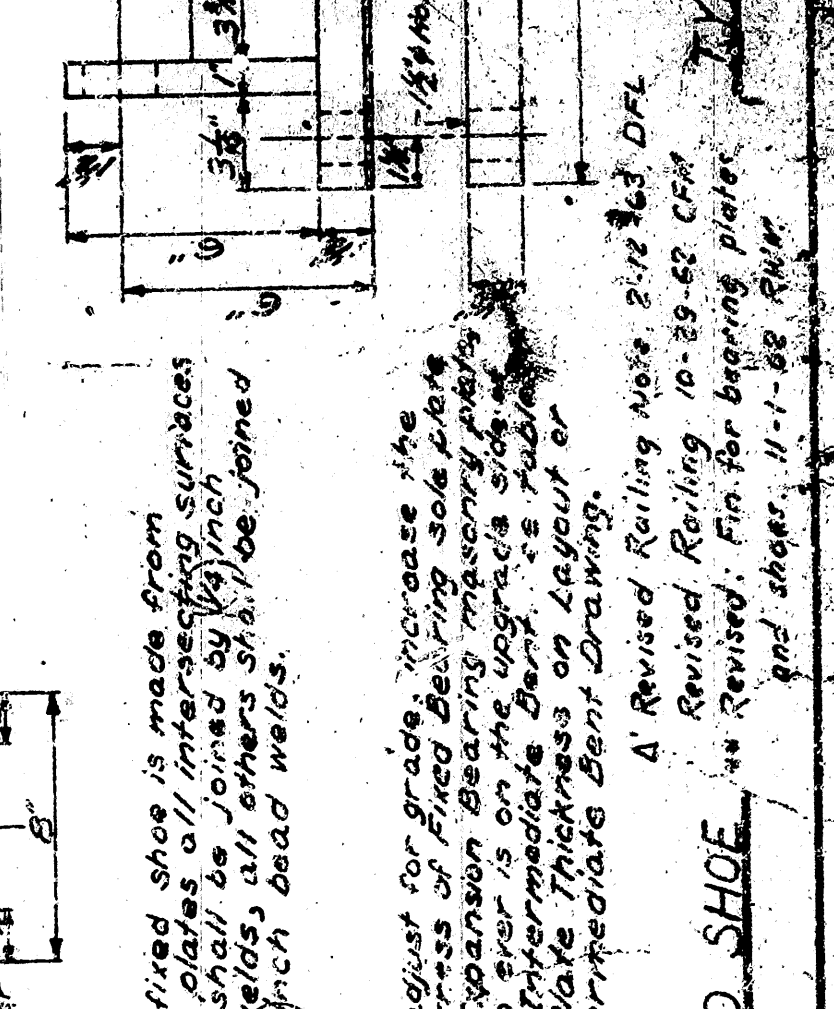
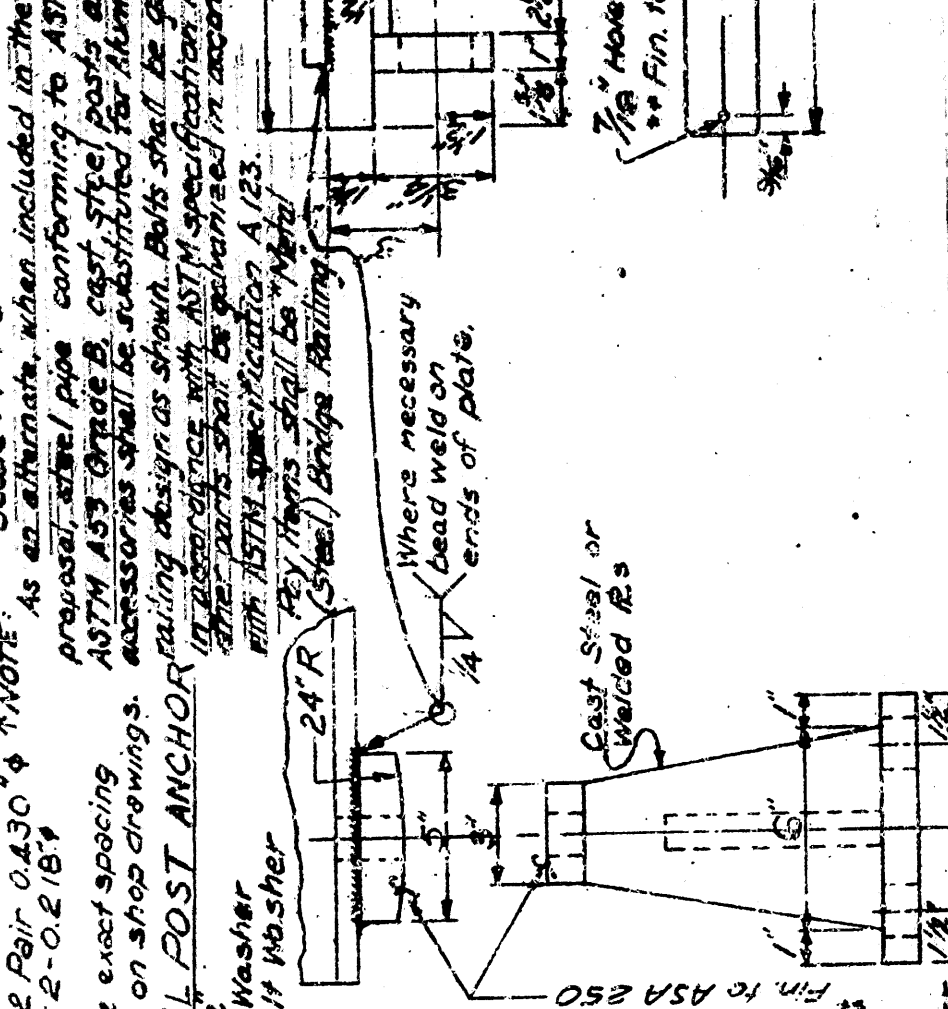
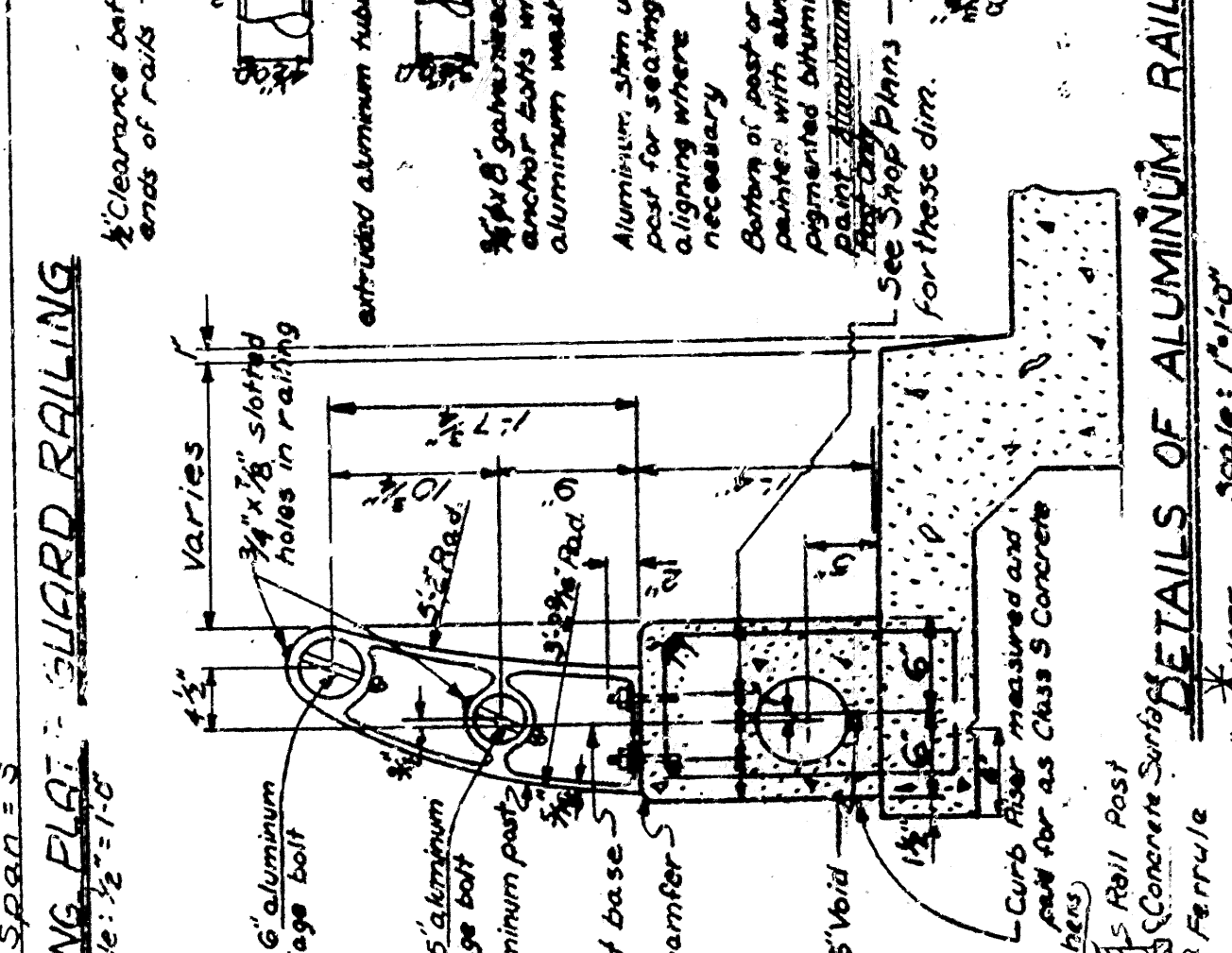
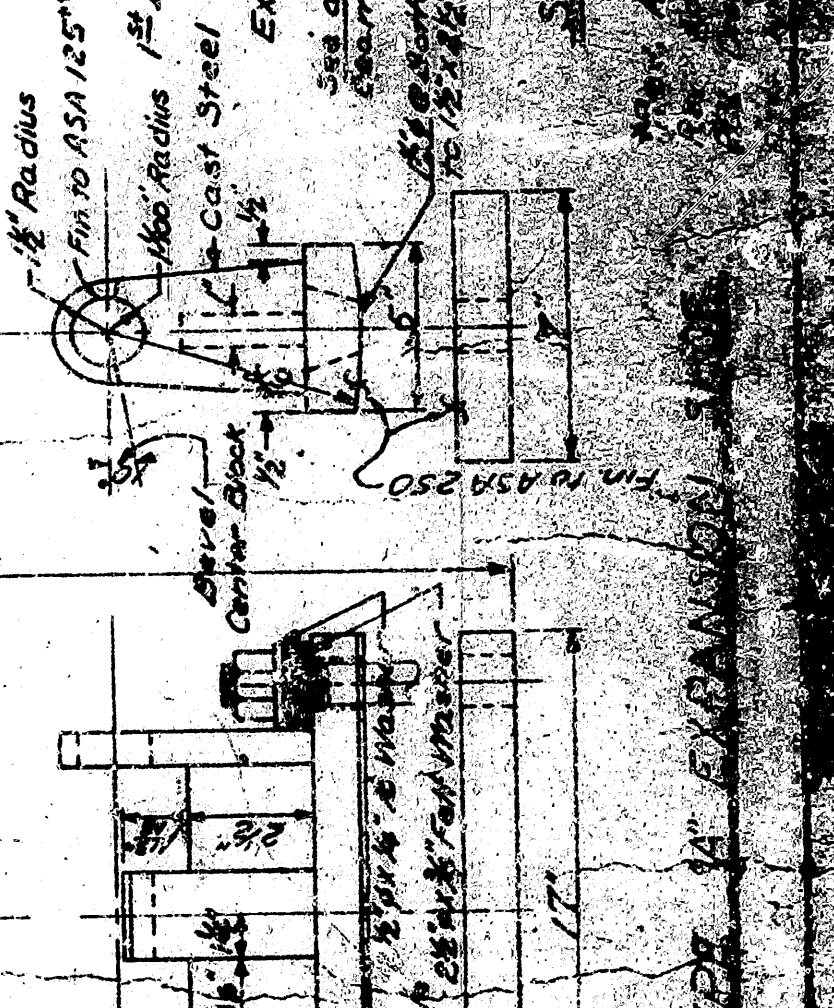
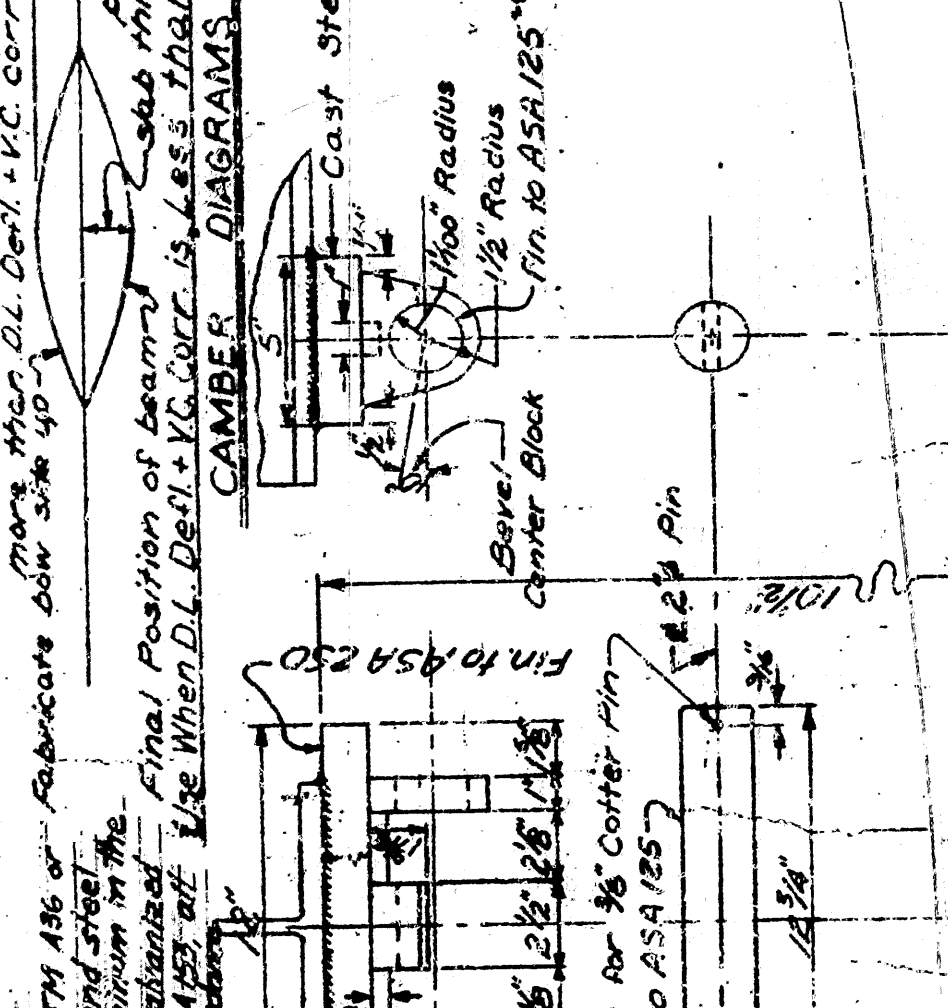
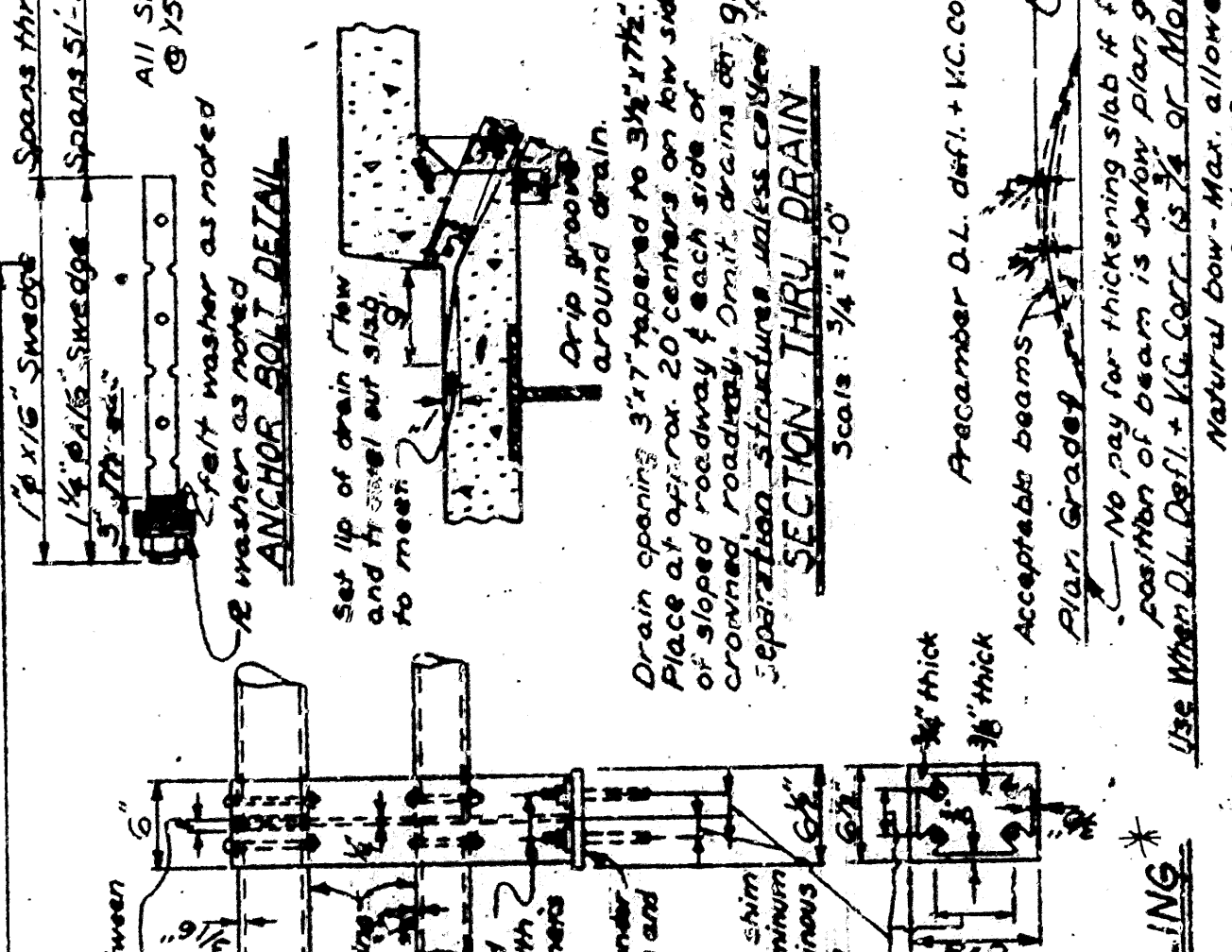
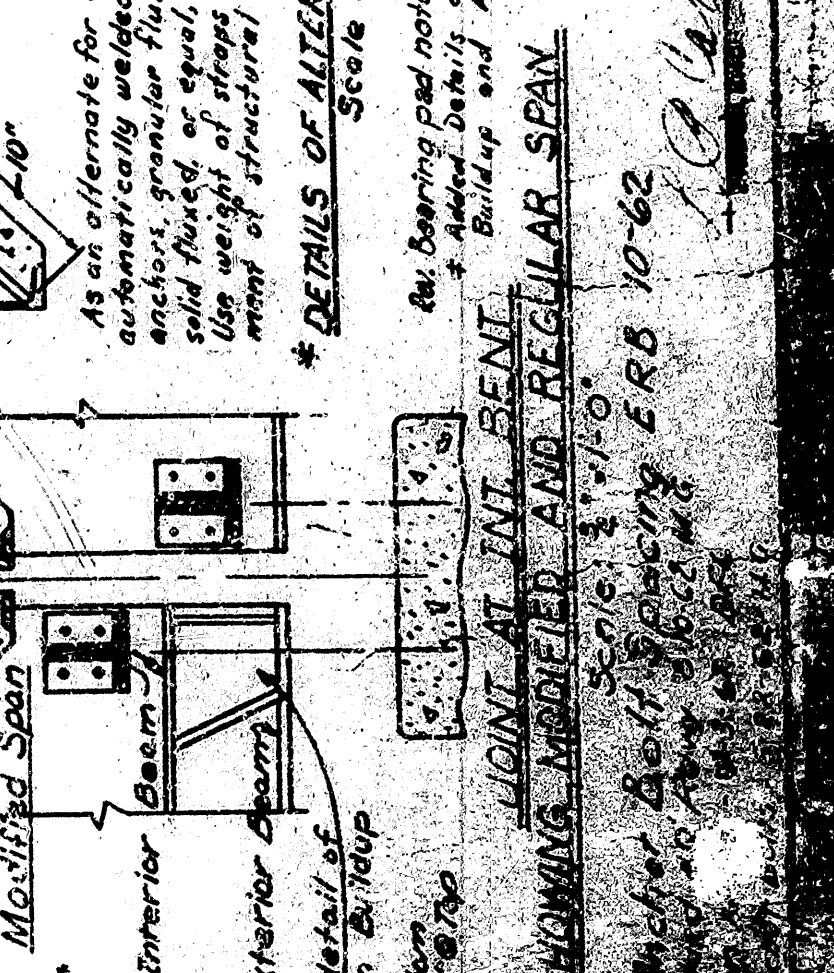
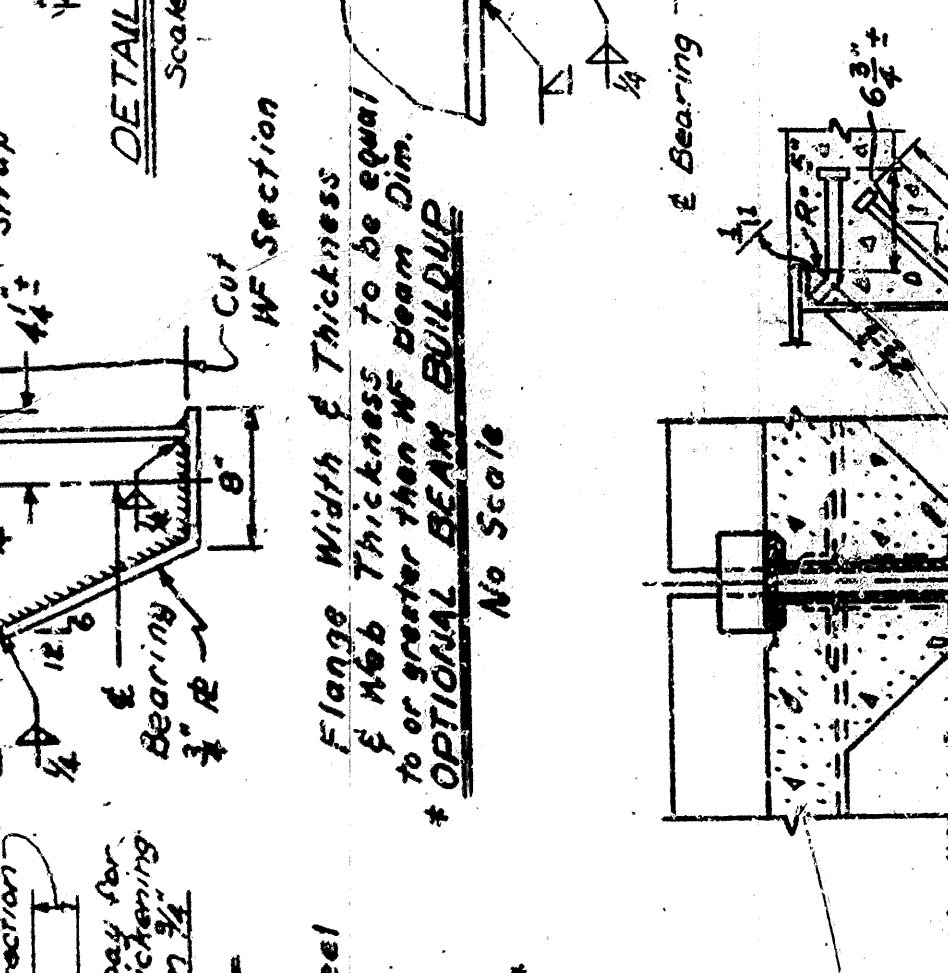
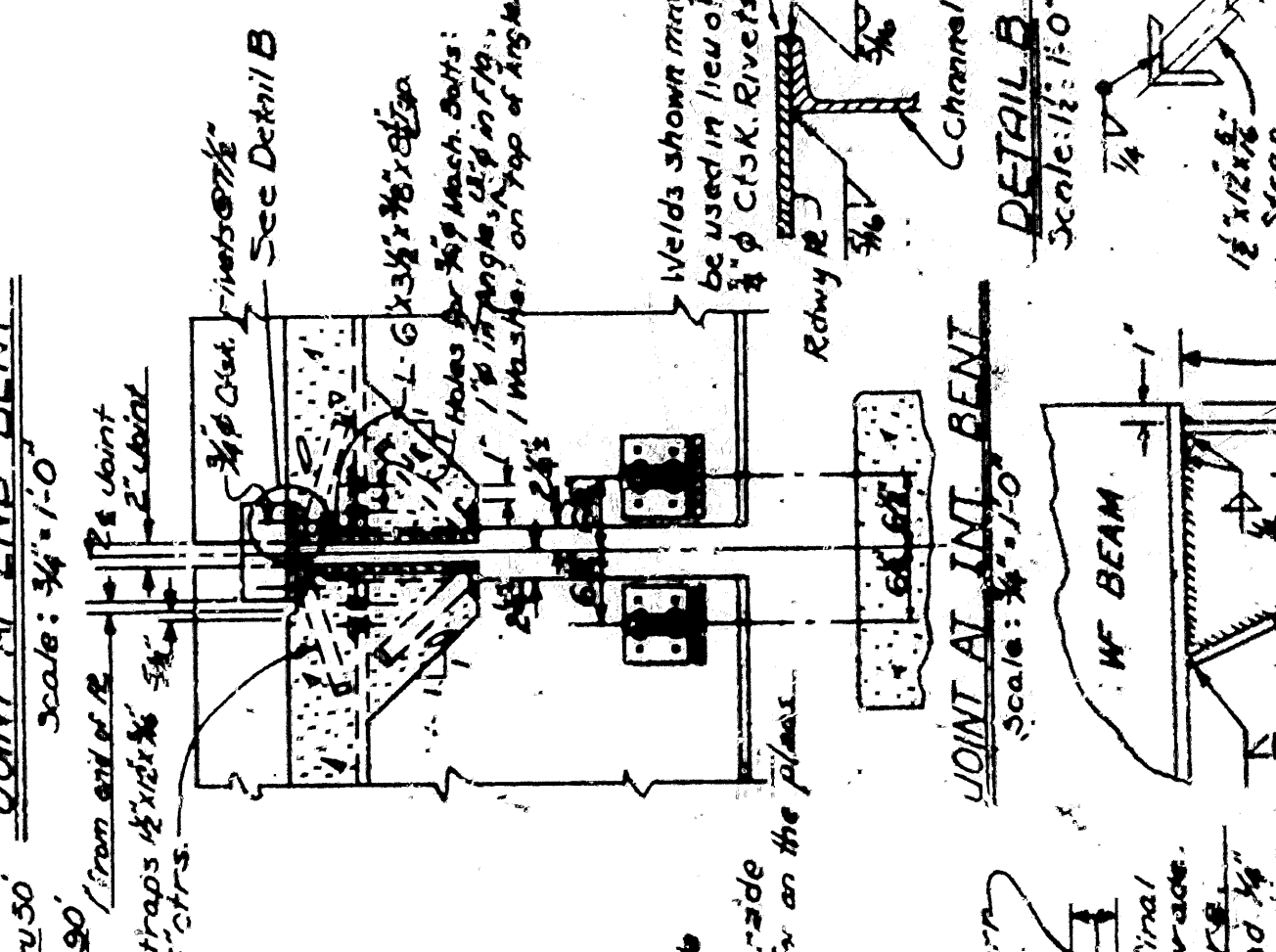
LITTLE ROCK, ARK.  
2 MAR 11 1892

DRAWN BY: ELL DATE: 8/11/96  
 TRACED BY: \_\_\_\_\_ DATE: 8/11

CHECKED BY: L.R. DATE: 3-3-62

BRIDGE NO. 1

☐ Not Use 10/25/67



To adjust for grade, increase the thickness of Fixed Bearing sole plate or Expansion Bearing masonry plate, which ever is on the upper side of the Intermediate Bent, as thickness of Plate Thickness on Layout or Intermediate Bent Drawing.

Revised: Fin for bearing plates  
and shoes. 11-1-68 RHM

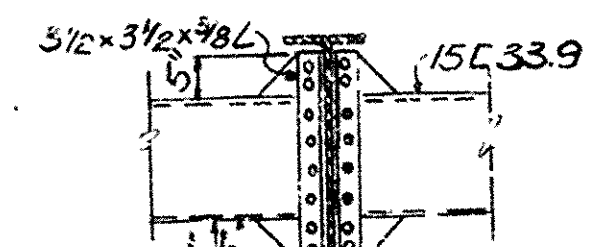
\_\_\_\_\_

EXPANSION SHOE

use for and bent - all spans.

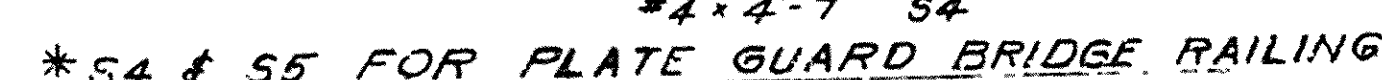
153 per int. bonds - 35:30' 50





DIAPHRAGM 68'-90' SPANS

BENDING DIAGRAM



### SHEAR CONNECTOR SPACING



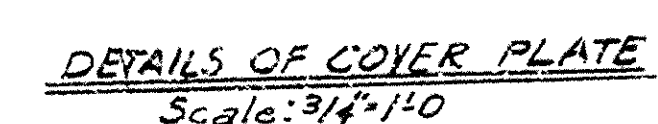
HALF SECTION A A MODIFIED SPANS

HALF SECTION B-B FOR MODIFIED OR REG. SPANS

Omit shear connectors on outside beams of modified spans when using beams shown to right of heavy line.

[illegible]

Note: Stud shear connectors, granular flux filled, solid flux, or equal may be used in place of the channels shown at the following ratios:  $3/4"$  diameter stud in place of 1.82 inches of channel,  $7/8"$  diameter stud in place of 2.52 inches of channel. The studs shall be 4" long and automatically end welded to the beam flanges in accordance with recommendations of the manufacturer.



live load  
to each composite beam 1.045 wheels + impact or  
0.522 lanes + impact

<u>Unit Stresses</u>	Class 5 Conc. (n=10)	1200
	Structural Steel (A-36)	20,000
	Reinforcing Steel	60,000

Note: This drawing to be used with Drug No. 14990.  
Note: Adapted from Drawing 5460.

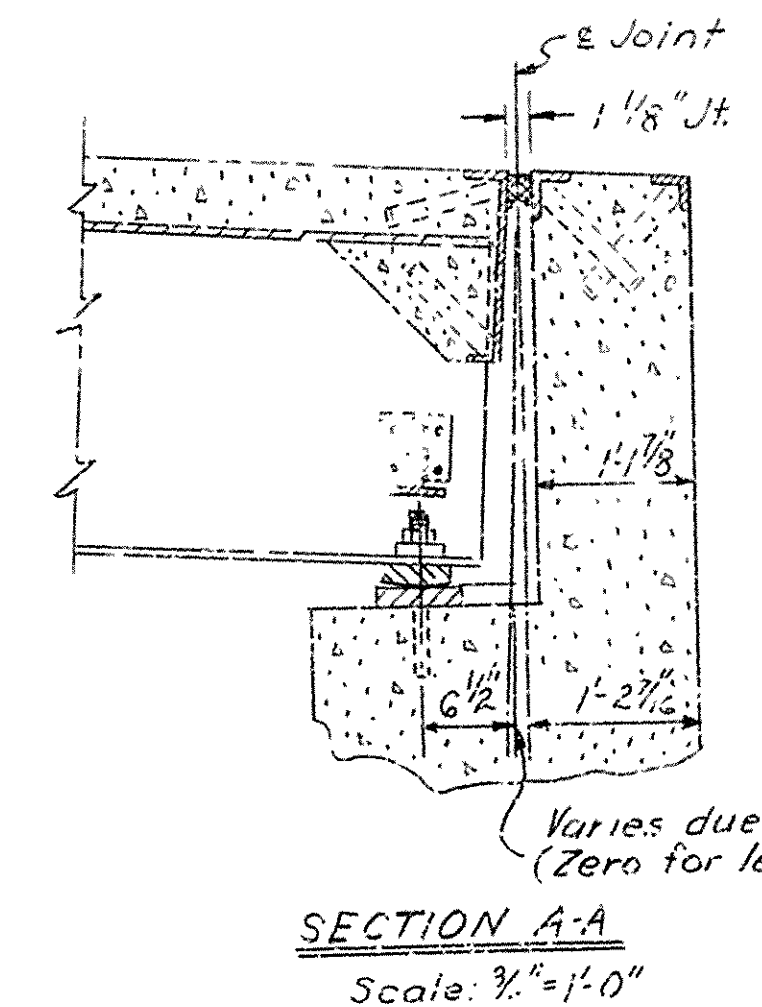
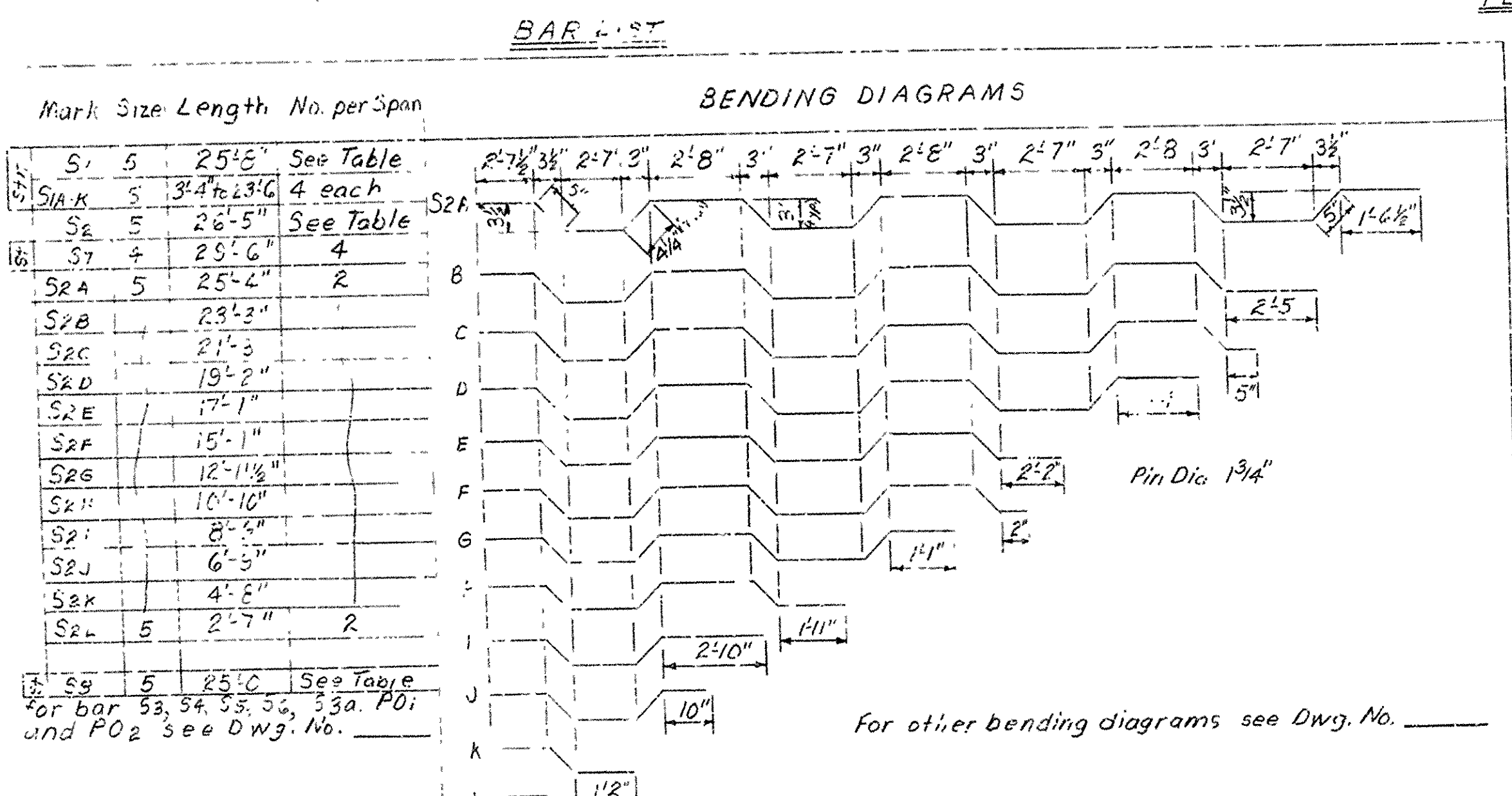
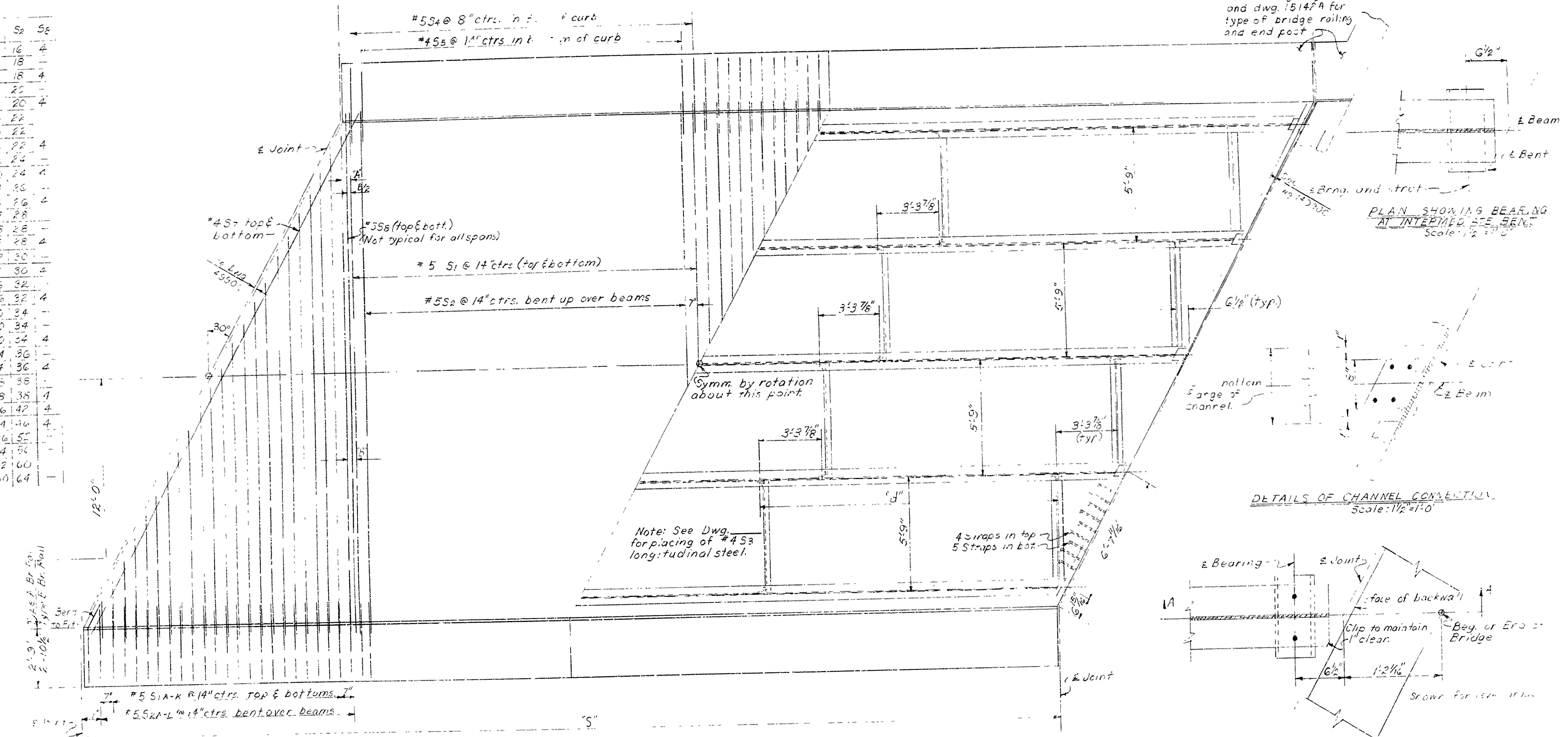
DETAILS OF STANDARD  
35'-90' COMPOSITE I-BEAM SPANS  
24'-0" CLEAR RDWY. 1'-0" & 1'-1- $\frac{1}{2}$ " CURBS  
ROUTE SEC.  
ARKANSAS STATE HIGHWAY COMMISSION

DRAWN BY: WAS DATE: 7-16-66  
 TRACED BY: WAS DATE: 7-16-66  
 CHECKED BY: FMH DATE: 8-19-62  
 SCALE: 1/2" = 1' 0"  
 BRIDGE NO. 3752 DRAWING NO. 15010



PAJ. ROAD NO.	STATE	FED. AID PROJ.	FISCAL YEAR	SHEET NO.	TOTAL SHEETS
6	ARK.				
JOB NO.					

VARIABLES									
No	d	A	B	S <sub>1</sub>	S <sub>2</sub>	S <sub>3</sub>	S <sub>4</sub>	S <sub>5</sub>	S <sub>6</sub>
1	20	3	3 3/4	1 3/4	1 3/4	3 1/4	16	4	
2	20	3	3 3/4	1 3/4	1 3/4	3 1/4	16	4	
3	20	3	3 3/4	1 3/4	1 3/4	3 1/4	16	4	
4	20	3	3 3/4	1 3/4	1 3/4	3 1/4	16	4	
5	20	3	3 3/4	1 3/4	1 3/4	3 1/4	16	4	
6	20	3	3 3/4	1 3/4	1 3/4	3 1/4	16	4	
7	20	3	3 3/4	1 3/4	1 3/4	3 1/4	16	4	
8	20	3	3 3/4	1 3/4	1 3/4	3 1/4	16	4	
9	20	3	3 3/4	1 3/4	1 3/4	3 1/4	16	4	
10	20	3	3 3/4	1 3/4	1 3/4	3 1/4	16	4	
11	20	3	3 3/4	1 3/4	1 3/4	3 1/4	16	4	
12	20	3	3 3/4	1 3/4	1 3/4	3 1/4	16	4	
13	20	3	3 3/4	1 3/4	1 3/4	3 1/4	16	4	
14	20	3	3 3/4	1 3/4	1 3/4	3 1/4	16	4	
15	20	3	3 3/4	1 3/4	1 3/4	3 1/4	16	4	
16	20	3	3 3/4	1 3/4	1 3/4	3 1/4	16	4	
17	20	3	3 3/4	1 3/4	1 3/4	3 1/4	16	4	
18	20	3	3 3/4	1 3/4	1 3/4	3 1/4	16	4	
19	20	3	3 3/4	1 3/4	1 3/4	3 1/4	16	4	
20	20	3	3 3/4	1 3/4	1 3/4	3 1/4	16	4	
21	20	3	3 3/4	1 3/4	1 3/4	3 1/4	16	4	
22	20	3	3 3/4	1 3/4	1 3/4	3 1/4	16	4	
23	20	3	3 3/4	1 3/4	1 3/4	3 1/4	16	4	
24	20	3	3 3/4	1 3/4	1 3/4	3 1/4	16	4	
25	20	3	3 3/4	1 3/4	1 3/4	3 1/4	16	4	
26	20	3	3 3/4	1 3/4	1 3/4	3 1/4	16	4	
27	20	3	3 3/4	1 3/4	1 3/4	3 1/4	16	4	
28	20	3	3 3/4	1 3/4	1 3/4	3 1/4	16	4	
29	20	3	3 3/4	1 3/4	1 3/4	3 1/4	16	4	
30	20	3	3 3/4	1 3/4	1 3/4	3 1/4	16	4	
31	20	3	3 3/4	1 3/4	1 3/4	3 1/4	16	4	
32	20	3	3 3/4	1 3/4	1 3/4	3 1/4	16	4	
33	20	3	3 3/4	1 3/4	1 3/4	3 1/4	16	4	
34	20	3	3 3/4	1 3/4	1 3/4	3 1/4	16	4	
35	20	3	3 3/4	1 3/4	1 3/4	3 1/4	16	4	
36	20	3	3 3/4	1 3/4	1 3/4	3 1/4	16	4	
37	20	3	3 3/4	1 3/4	1 3/4	3 1/4	16	4	
38	20	3	3 3/4	1 3/4	1 3/4	3 1/4	16	4	
39	20	3	3 3/4	1 3/4	1 3/4	3 1/4	16	4	
40	20	3	3 3/4	1 3/4	1 3/4	3 1/4	16	4	
41	20	3	3 3/4	1 3/4	1 3/4	3 1/4	16	4	
42	20	3	3 3/4	1 3/4	1 3/4	3 1/4	16	4	
43	20	3	3 3/4	1 3/4	1 3/4	3 1/4	16	4	
44	20	3	3 3/4	1 3/4	1 3/4	3 1/4	16	4	
45	20	3	3 3/4	1 3/4	1 3/4	3 1/4	16	4	
46	20	3	3 3/4	1 3/4	1 3/4	3 1/4	16	4	
47	20	3	3 3/4	1 3/4	1 3/4	3 1/4	16	4	
48	20	3	3 3/4	1 3/4	1 3/4	3 1/4	16	4	
49	20	3	3 3/4	1 3/4	1 3/4	3 1/4	16	4	
50	20	3	3 3/4	1 3/4	1 3/4	3 1/4	16	4	
51	20	3	3 3/4	1 3/4	1 3/4	3 1/4	16	4	
52	20	3	3 3/4	1 3/4	1 3/4	3 1/4	16	4	
53	20	3	3 3/4	1 3/4	1 3/4	3 1/4	16	4	
54	20	3	3 3/4	1 3/4	1 3/4	3 1/4	16	4	
55	20	3	3 3/4	1 3/4	1 3/4	3 1/4	16	4	
56	20	3	3 3/4	1 3/4	1 3/4	3 1/4	16	4	
57	20	3	3 3/4	1 3/4	1 3/4	3 1/4	16	4	
58	20	3	3 3/4	1 3/4	1 3/4	3 1/4	16	4	
59	20	3	3 3/4	1 3/4	1 3/4	3 1/4	16	4	
60	20	3	3 3/4	1 3/4	1 3/4	3 1/4	16	4	
61	20	3	3 3/4	1 3/4	1 3/4	3 1/4	16	4	
62	20	3	3 3/4	1 3/4	1 3/4	3 1/4	16	4	
63	20	3	3 3/4	1 3/4	1 3/4	3 1/4	16	4	
64	20	3	3 3/4	1 3/4	1 3/4	3 1/4	16	4	
65	20	3	3 3/4	1 3/4	1 3/4	3 1/4	16	4	
66	20	3	3 3/4	1 3/4	1 3/4	3 1/4	16	4	
67	20	3	3 3/4	1 3/4	1 3/4	3 1/4	16	4	
68	20	3	3 3/4	1 3/4	1 3/4	3 1/4	16	4	
69	20	3	3 3/4	1 3/4	1 3/4	3 1/4	16	4	
70	20	3	3 3/4	1 3/4	1 3/4	3 1/4	16	4	
71	20	3	3 3/4	1 3/4	1 3/4	3 1/4	16	4	
72	20	3	3 3/4	1 3/4	1 3/4	3 1/4	16	4	
73	20	3	3 3/4	1 3/4	1 3/4	3 1/4	16	4	
74	20	3	3 3/4	1 3/4	1 3/4	3 1/4	16	4	
75	20	3	3 3/4	1 3/4	1 3/4	3 1/4	16	4	
76	20	3	3 3/4	1 3/4	1 3/4	3 1/4	16	4	
77	20	3	3 3/4	1 3/4	1 3/4	3 1/4	16	4	
78	20	3	3 3/4	1 3/4	1 3/4	3 1/4	16	4	
79	20	3	3 3/4	1 3/4	1 3/4	3 1/4	16	4	
80	20	3	3 3/4	1 3/4	1 3/4	3 1/4	16	4	
81	20	3	3 3/4	1 3/4	1 3/4	3 1/4	16	4	
82	20	3	3 3/4	1 3/4	1 3/4	3 1/4	16	4	
83	20	3	3 3/4	1 3/4	1 3/4	3 1/4	16	4	
84	20	3	3 3/4	1 3/4	1 3/4	3 1/4	16	4	
85	20	3	3 3/4	1 3/4	1 3/4	3 1/4	16	4	
86	20	3	3 3/4	1 3/4	1 3/4	3 1/4	16	4	
87	20	3	3 3/4	1 3/4	1 3/4	3 1/4	16	4	
88	20	3	3 3/4	1 3/4	1 3/4	3 1/4	16	4	
89	20	3	3 3/4	1 3/4	1 3/4	3 1/4	16	4	
90	20	3	3 3/4	1 3/4	1 3/4	3 1/4	16	4	
91	20	3	3 3/4	1 3/4	1 3/4	3 1/4	16	4	
92	20	3	3 3/4	1 3/4	1 3/4	3 1/4	16	4	
93	20	3	3 3/4	1 3/4	1 3/4	3 1/4	16	4	
94	20	3	3 3/4	1 3/4	1 3/4	3 1/4	16	4	
95	20	3	3 3/4	1 3/4	1 3/4	3 1/4	16	4	
96	20	3	3 3/4	1 3/4	1 3/4	3 1/4	16	4	
97	20	3	3 3/4	1 3/4	1 3/4	3 1/4	16	4	
98	20	3	3 3/4	1 3/4	1 3/4	3 1/4	16	4	
99	20	3	3 3/4	1 3/4	1 3/4	3 1/4	16	4	
100	20	3	3 3/4	1 3/4	1 3/4	3 1/4	16	4	



Note: For details not shown and general notes see Dwg. No. \_\_\_\_\_ & 14390C

DETAILS OF STANDARD 35'-90' COMPOSITE I-BEAM SPANS  
24' CLEAR ROADWAY 1'-6" & 1'-7 1/2" CURBS  
30° SKEW, LEFT FORWARD  
ROADWAY: 1 1/2" PARABOLIC CROWN or 0.0104 SLOPE  
ROUTE SEC.  
ARKANSAS STATE HIGHWAY COMMISSION  
LITTLE ROCK, ARK.

DRAWN BY: GEM DATE: 8-22-66  
TRACED BY: DATE: SCALE: 3/4"=1'-0" or 3/8"=1'-0"  
CHECKED BY: D-6 DATE: 8-22-66  
BRIDGE NO. DRAWING NO. 15011

Revised and Redrawn, 8-22-66

BRIDGE ENGINEER