

GENERAL NOTES

Bench Mark - U.S.C.G.S. S-1108-421' left Sta. 1043+63. Elevation 239.63

For Details of Superstructure see Dwg. Nos. 12005, 12006 & 12000

For Details of Substructure see Dwg. Nos. 12003 & 12004.

All piling to be 16" Octagonal Precast Concrete or 16" Concrete filled metal shell and shall be driven with an approved air, steam or Diesel hammer to a minimum bearing capacity of 36 tons per pile and a minimum penetration of 20" with a 6" piling shoe.

For estimating quantities only, actual lengths shall be determined in the field. Drive one 26' test pile in each nos.

Piles in end bents to be driven after embankment is in place.

For Details of Piles see Dwg. Nos. 238-A & 238-B

For Details of Concrete Riprap see Dwg. No. 11990.

Loading: H 15 AASHO 1261

Stresses: Class "A" Concrete (nois) 8400 psi
Class "S" Concrete (nois) 12000 psi
Reinforcing Steel: 26,000 psi
Structural Steel (A36) 20,000 psi

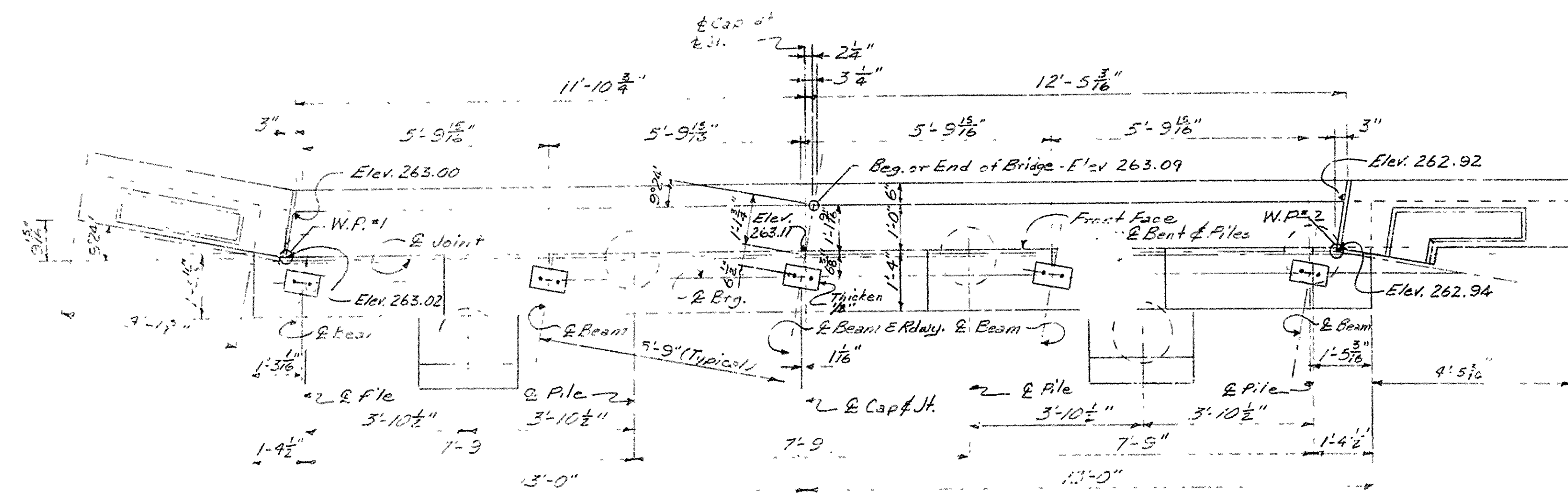
SPECIFICATIONS: Arkansas State Highway Commission Standard Specifications for Highway Construction, Edition of 1959

**LAYOUT OF
AIRPORT ROAD UNDERPASS
HWY. 31- PRAIRIE CO. LINE
LONOKE COUNTY
INT ROUTE 40 SEC. 4
ARKANSAS STATE HIGHWAY COMMISSION
LITTLE ROCK, ARK.**

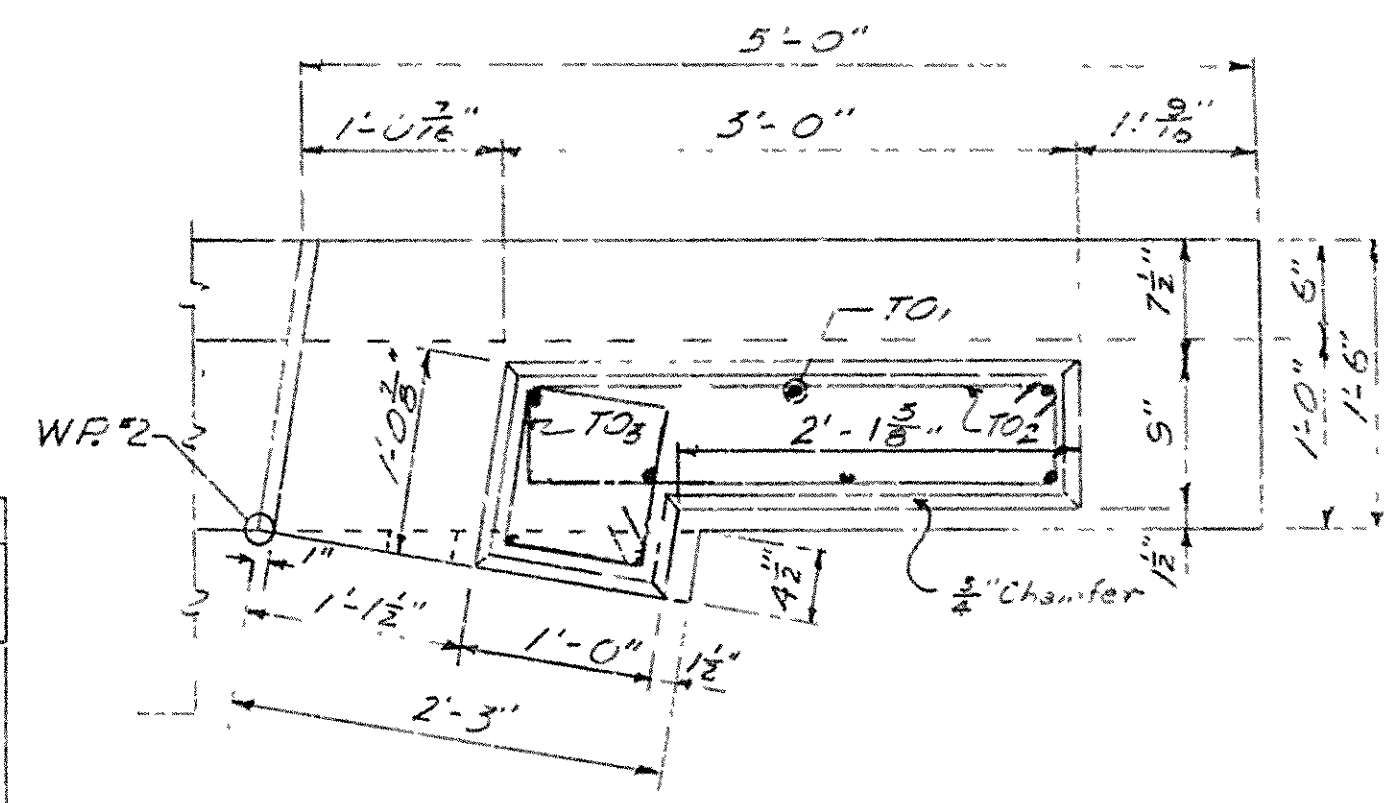
BRIDGE NO. 3656 DRAWING NO. 11995

DRAWN BY: F.E. DATE: 3-16-62
CHECKED BY: E.R.B. DATE: 3-28-62

SCALE: 1" = 10'-0"

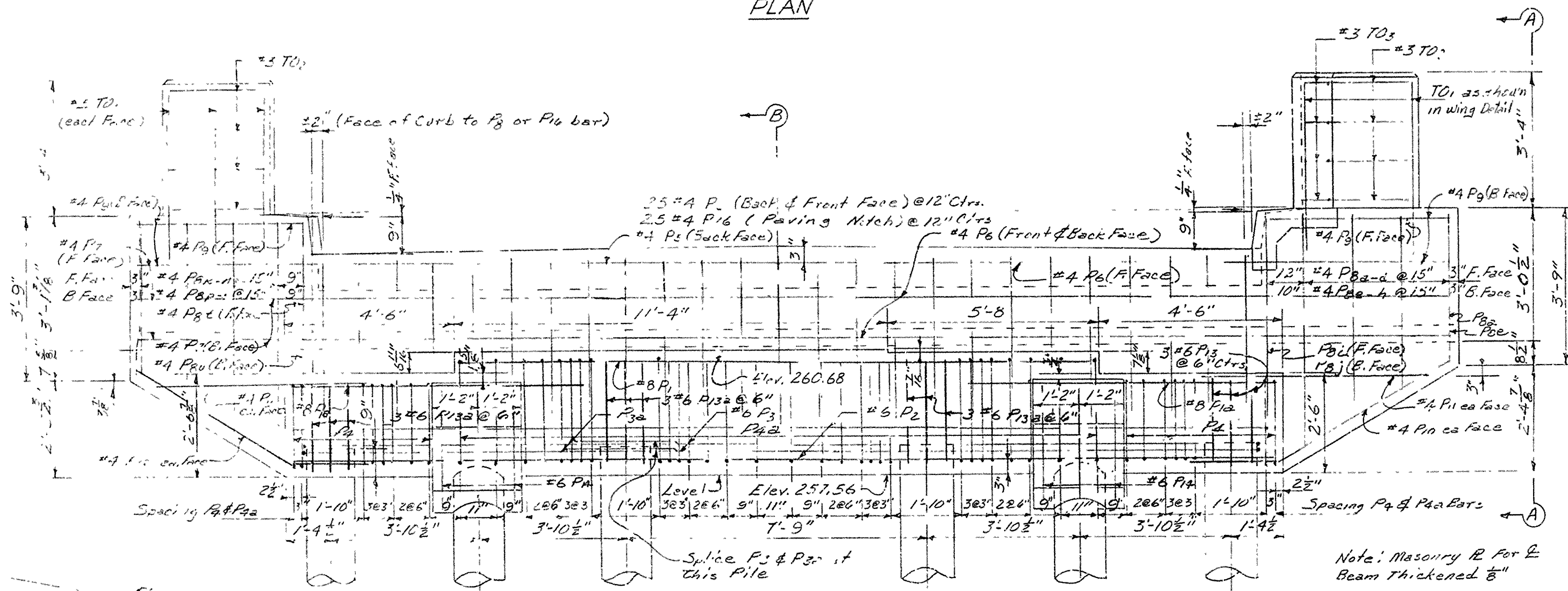


PLAN

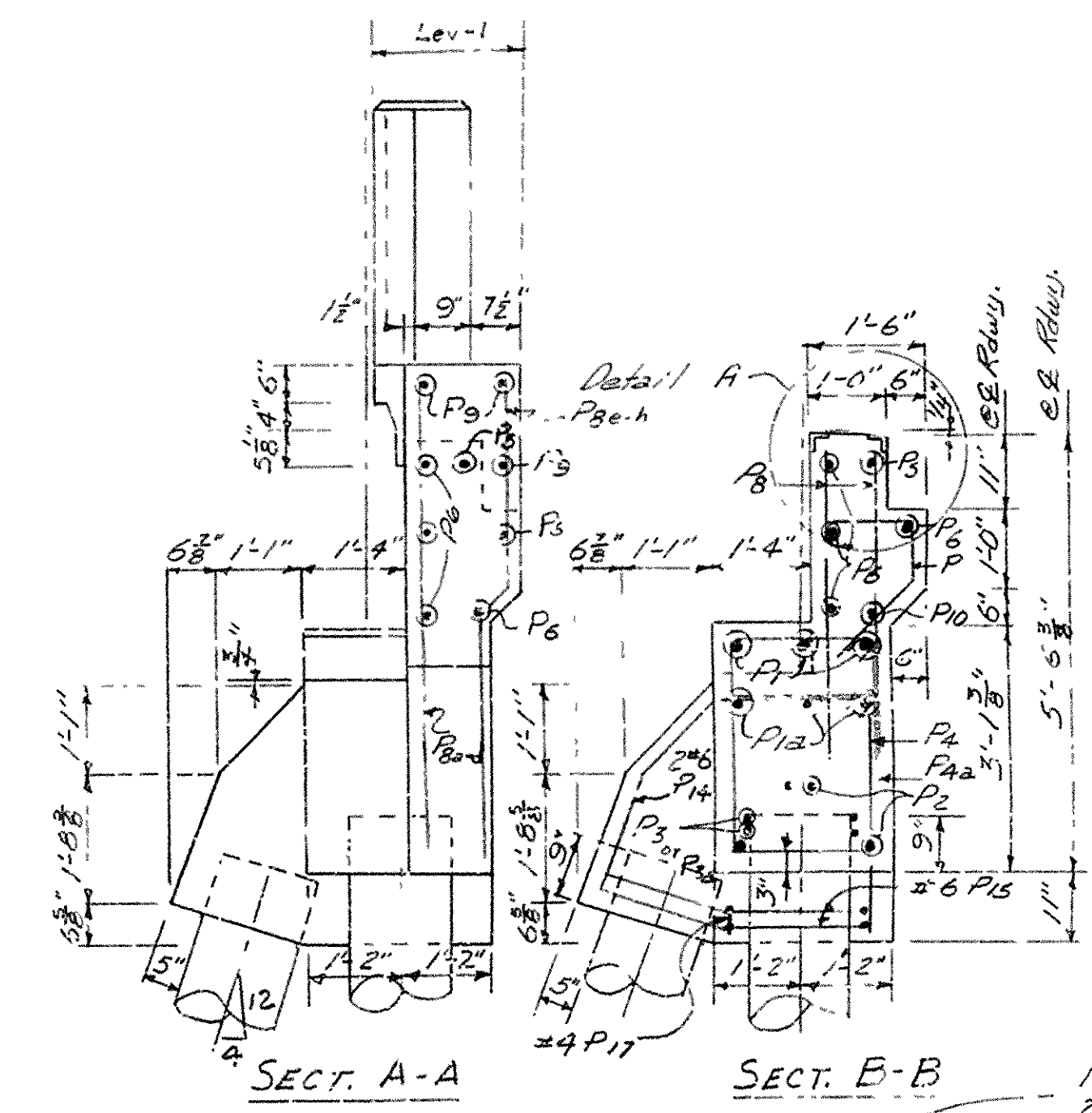


DETAIL OF STRAIGHT WING
Scale 1"=1'-0"

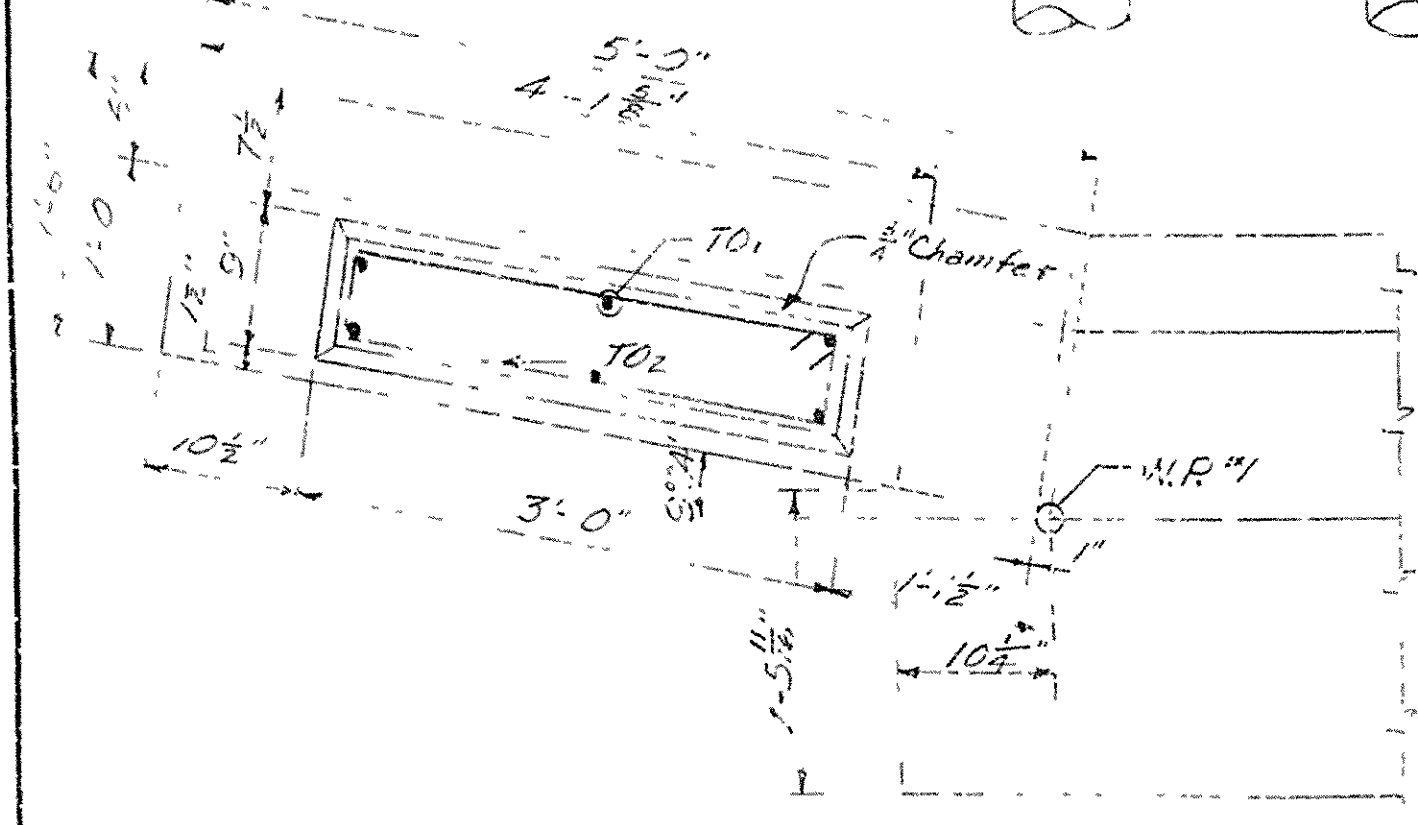
Notes
 For Details of Piles see Dwg. No. P3320-138A
 For Details of Superstructure see
 Dwg. No. 12005, 12006 & 12790.
 For Gen. Notes and Layout see Dwg. No. 11995.
 Thicken Masonry R at Beam 3 by 1/8"



ELEVATION

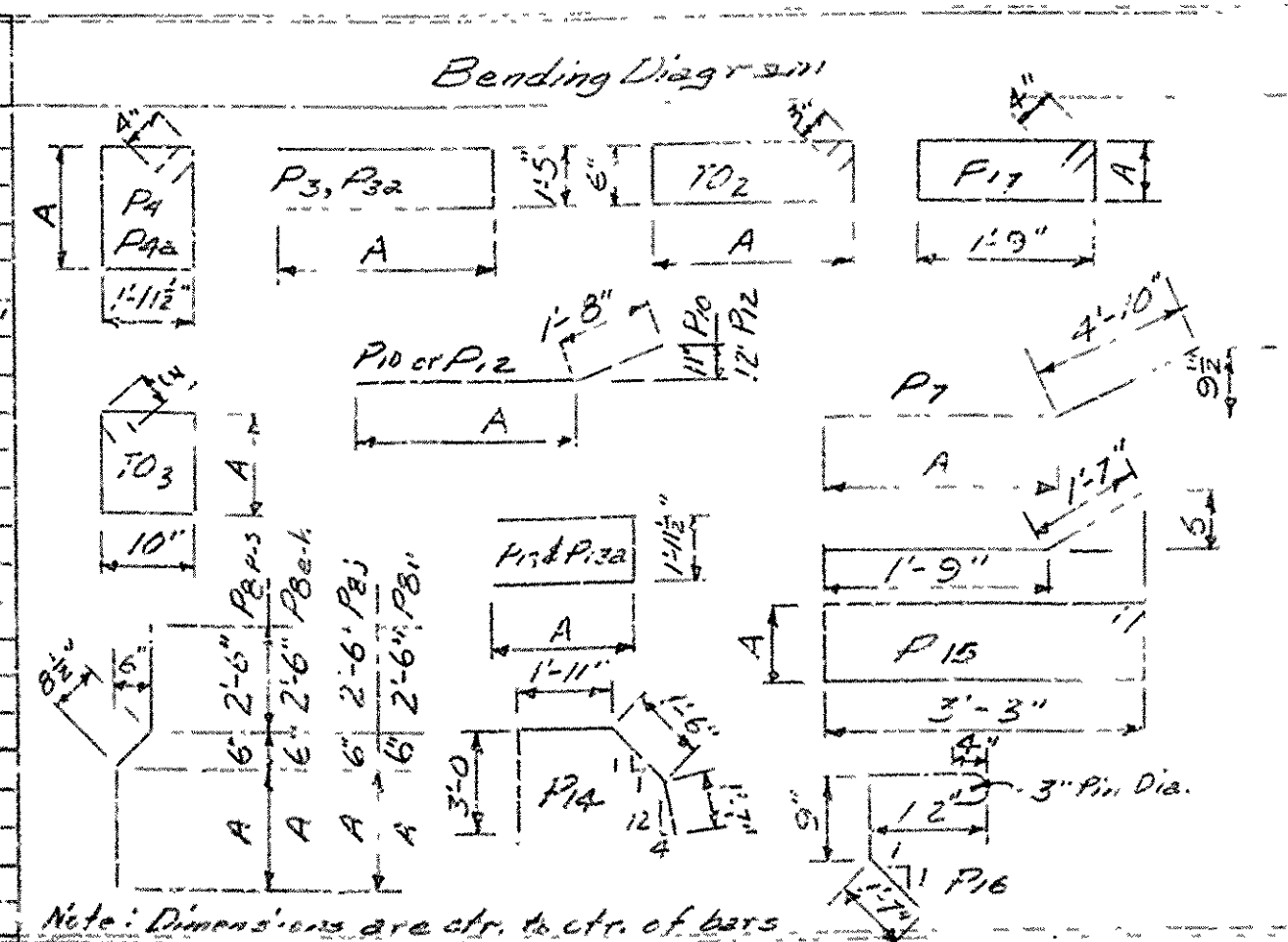


Note: Masonry R for R Beam thickened 1/8"
 Detail A
 Scale 1"=1'-0"



DETAIL OF SKEWED WING
Scale 1"=1'-0"

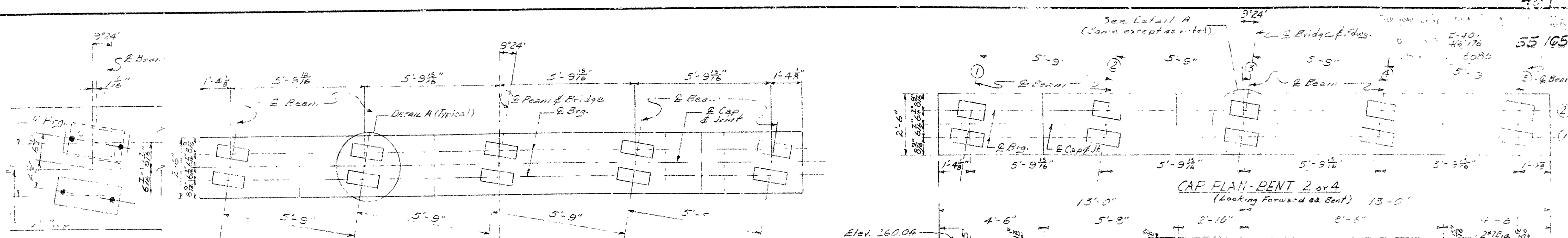
Mark	Size	No.	Length	A	Pin	Mark	Size	No.	Length	A	Pin
P1	#3	3	16'-8"	-	Str.	P11	#4	4	3'-0"	-	Str.
P12	#8	0	1'-6"	-	Str.	P12	#4	2	16'-4"	4'-9"	1 1/2"
P2	#6	4	25'-8"	-	Str.	P13	#6	6	6'-1"	2'-1 1/2"	2 1/2"
P3	#6	2	34'-8"	17'-6"	2 1/2"	P14	#6	6	7'-3"	2'-1 1/2"	2 1/2"
P4	#6	2	20'-10"	9'-9"	2 1/2"	P15	#6	4	7'-11"	-	2 1/2"
P5	#4	16	8'-5"	2'-1 1/2"	1 1/2"	P16	#6	4	10'-10"	1'-8"	2 1/2"
P6	#4	30	9'-11"	2'-8 1/2"	1 1/2"	P17	#4	25	1'-0"	-	1 1/2"
P7	#4	1	25'-1"	-	Str.	P18	#4	2	4'-11"	0'-5"	1 1/2"
P8	#4	5	22'-2"	-	Str.						
P9	#4	5	6'-6"	1'-8"	3"						
P10	#4	50	1'-6"	-	S.						
P11	#4	102	3'-8 1/2"	-	Str.						
P12	#4	102	3'-8 1/2"	6'-2 1/2"	Str.						
P13	#4	1	5'-2"	2'-5"	1 1/2"						
P14	#4	102	3'-8 1/2"	6'-2 1/2"	Str.						
P15	#4	1	5'-2"	2'-5"	1 1/2"						
P16	#4	102	3'-8 1/2"	6'-2 1/2"	Str.						
P17	#4	1	5'-2"	2'-5"	1 1/2"						
P18	#4	102	3'-8 1/2"	6'-2 1/2"	Str.						
P19	#4	1	5'-2"	2'-5"	1 1/2"						
P20	#4	102	3'-8 1/2"	6'-2 1/2"	Str.						
P21	#4	1	5'-2"	2'-5"	1 1/2"						
P22	#4	102	3'-8 1/2"	6'-2 1/2"	Str.						
P23	#4	1	5'-2"	2'-5"	1 1/2"						
P24	#4	102	3'-8 1/2"	6'-2 1/2"	Str.						
P25	#4	1	5'-2"	2'-5"	1 1/2"						
P26	#4	102	3'-8 1/2"	6'-2 1/2"	Str.						
P27	#4	1	5'-2"	2'-5"	1 1/2"						
P28	#4	102	3'-8 1/2"	6'-2 1/2"	Str.						
P29	#4	1	5'-2"	2'-5"	1 1/2"						
P30	#4	102	3'-8 1/2"	6'-2 1/2"	Str.						
P31	#4	1	5'-2"	2'-5"	1 1/2"						
P32	#4	102	3'-8 1/2"	6'-2 1/2"	Str.						
P33	#4	1	5'-2"	2'-5"	1 1/2"						
P34	#4	102	3'-8 1/2"	6'-2 1/2"	Str.						
P35	#4	1	5'-2"	2'-5"	1 1/2"						
P36	#4	102	3'-8 1/2"	6'-2 1/2"	Str.						
P37	#4	1	5'-2"	2'-5"	1 1/2"						
P38	#4	102	3'-8 1/2"	6'-2 1/2"	Str.						
P39	#4	1	5'-2"	2'-5"	1 1/2"						
P40	#4	102	3'-8 1/2"	6'-2 1/2"	Str.						
P41	#4	1	5'-2"	2'-5"	1 1/2"						
P42	#4	102	3'-8 1/2"	6'-2 1/2"	Str.						
P43	#4	1	5'-2"	2'-5"	1 1/2"						
P44	#4	102	3'-8 1/2"	6'-2 1/2"	Str.						
P45	#4	1	5'-2"	2'-5"	1 1/2"						
P46	#4	102	3'-8 1/2"	6'-2 1/2"	Str.						
P47	#4	1	5'-2"	2'-5"	1 1/2"						
P48	#4	102	3'-8 1/2"	6'-2 1/2"	Str.						
P49	#4	1	5'-2"	2'-5"	1 1/2"						
P50	#4	102	3'-8 1/2"	6'-2 1/2"	Str.						
P51	#4	1	5'-2"	2'-5"	1 1/2"						
P52	#4	102	3'-8 1/2"	6'-2 1/2"	Str.						
P53	#4	1	5'-2"	2'-5"	1 1/2"						
P54	#4	102	3'-8 1/2"	6'-2 1/2"	Str.						
P55	#4	1	5'-2"	2'-5"	1 1/2"						
P56	#4	102	3'-8 1/2"	6'-2 1/2"	Str.						
P57	#4	1	5'-2"	2'-5"	1 1/2"						
P58	#4	102	3'-8 1/2"	6'-2 1/2"	Str.						
P59	#4	1	5'-2"	2'-5"	1 1/2"						
P60	#4	102	3'-8 1/2"	6'-2 1/2"	Str.						
P61	#4	1	5'-2"	2'-5"	1 1/2"						
P62	#4	102	3'-8 1/2"	6'-2 1/2"	Str.						
P63	#4	1	5'-2"	2'-5"	1 1/2"						
P64	#4	102	3'-8 1/2"	6'-2 1/2"	Str.						
P65	#4	1	5'-2"	2'-5"	1 1/2"						
P66	#4	102	3'-8 1/2"	6'-2 1/2"	Str.						
P67	#4	1	5'-2"	2'-5"	1 1/2"						
P68	#4	102	3'-8 1/2"	6'-2 1/2"	Str.						
P69	#4	1	5'-2"	2'-5"	1 1/2"						
P70	#4	102	3'-8 1/2"	6'-2 1/2"	Str.						
P71	#4	1	5'-2"	2'-5"	1 1/2"						
P72	#4	102	3'-8 1/2"	6'-2 1/2"	Str.						
P73	#4	1	5'-2"	2'-5"	1 1/2"						
P74	#4	102	3'-8 1/2"	6'-2 1/2"	Str.						
P75	#4	1	5'-2"	2'-5"	1 1/2"						
P76	#4	102	3'-8 1/2"	6'-2 1/2"	Str.						
P77	#4	1	5'-2"	2'-5"	1 1/2"						
P78	#4	102	3'-8 1/2"	6'-2 1/2"	Str.						
P79	#4	1	5'-2"	2'-5"	1 1/2"						
P80	#4	102	3'-8 1/2"	6'-2 1/2"	Str.						
P81	#4	1	5'-2"	2'-5"	1 1/2"						
P82	#4	102	3'-8 1/2"	6'-2 1/2"	Str.						
P83	#4	1	5'-2"	2'-5"	1 1/2"						
P84	#4	102	3'-8 1/2"	6'-2 1/2"	Str.						
P85	#4	1	5'-2"	2'-5"	1 1/2"						
P86	#4	102	3'-8 1/2"	6'-2 1/2"	Str.						
P87	#4	1	5'-2"	2'-5"	1 1/2"						
P88	#4	102	3'-8 1/2"	6'-2 1/2"	Str.						
P89	#4	1	5'-2"	2'-5"	1 1/2"						
P90	#4	102	3'-8 1/2"	6'-2 1/2"	Str.						
P91	#4	1	5'-2"	2'-5"	1 1/2"						
P92	#4	102	3'-8 1/2"	6'-2 1/2"	Str.						
P93	#4	1	5'-2"	2'-5"	1 1/2"						
P94	#4	102	3'-8 1/2"	6'-2 1/2"	Str.						
P95	#4	1	5'-2"	2'-5"	1 1/2"						
P96	#4	102	3'-8 1/2"	6'-2 1/2"	Str.						
P97	#4	1	5'-2"	2'-5"	1 1/2"						
P98	#4	102	3'-8 1/2"	6'-2 1/2"	Str.						
P99	#4	1	5'-2"	2'-5"	1 1/2"						
P100	#4	102	3'-8 1/2"	6'-2 1/2"	Str.						



DETAIL A
Scale 1"=1'-0"

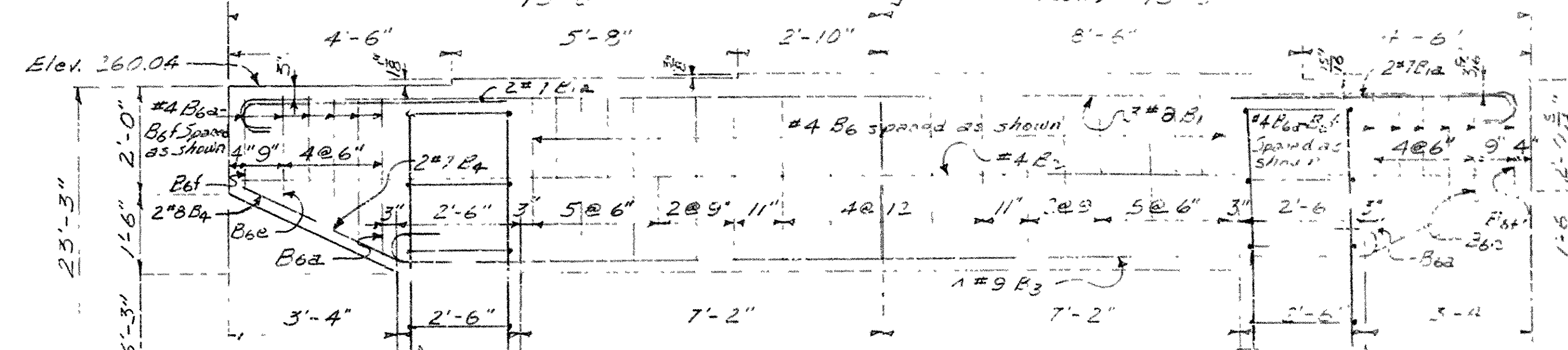
DETAILS OF BENT 1 and 5
 AIRPORT ROAD UNDERPASS
 HWY 31 - PRAIRIE CO. LINE
 LONOKE COUNTY
 INT. ROUTE 40 SEC. 4
 ARKANSAS STATE HIGHWAY COMMISSION
 LITTLE ROCK, ARK

DRAWN BY: E.E. DATE: 4-27-62
 TRACED BY: DATE: SCALE: 1/2"=1'-0" as noted
 CHECKED BY: E.E. DATE: 5-7-62
 BRIDGE NO. 3656 DRAWING NO. 12003



CAP FLAN-BENT 2 or 4

(Looking Forward ed. Bent

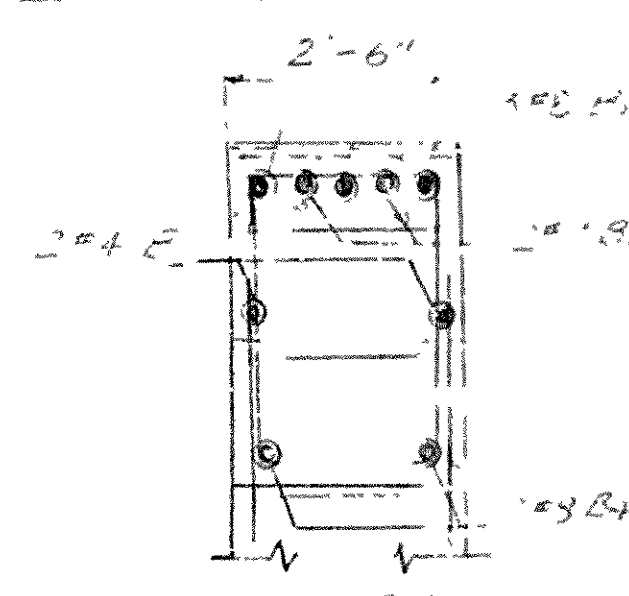


CAP ELEVATION-BENT 2 or 4

Scale: $\frac{1}{2}'' = 1'-0''$

Bent 2 Looking Forward
Bent 7 Looking Back

Notes: 1. In exposed corners to be Chan-cored 3/4"
Class 5 Concrete to be used in Caps
Class A Concrete to be used in Columns
and footings.

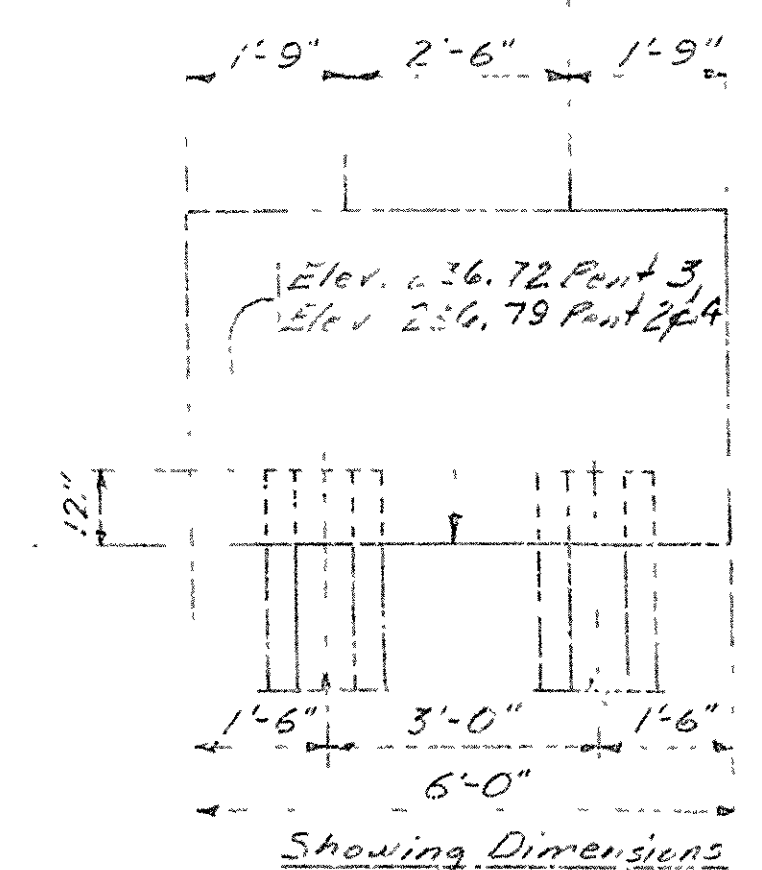


Benzina L'Espresso

EAR LIST (Each Bent)						
Mark	Size	Length		No. Rnds.	A	P in L in
		Feet	Inches Bent 20ft			
B1a	#7	8'-2"	8'-2"	4	7'-4"	5 1/4"
B1	#8	27'-9"	27'-9"	3	25'-6"	8"
B2	#4	25'-6"	25'-6"	2	—	5 ft.
B3	#9	21'-9"	21'-9"	4	19'-3"	9"
B4	#8	20'-2"	20'-2"	2	19'-4"	8"
B5	#4	8'-9"	8'-9"	32	2'-0 1/2"	1 1/2"
B6	#4	11'-1"	11'-1"	21	3'-1 1/2"	1 1/2"
B6a-b	#4	9'-7 1/2", 10'-0", 9'-7 1/2", 10'-0"		2 ea.	2'-0 1/2", 3'-0"	1 1/2"
B6f	#4	8'-4"	8'-4"	2	1'-9"	1 1/2"
B7	#3	20'-0"	—	12	—	5 ft.
B7	#8	—	19'-6"	12	—	5 ft.
F1	#6	6'-11"	6'-11"	18	5'-6"	4 1/2"
F2	#0	7'-11"	7'-11"	18	6'-6"	4 3/4"
F3	#8	6'-9"	5'-9"	12	5'-7 1/2"	8"

		Beam No.				
E. Brg. No.		1	2	3	4	5
Bent 2	1	0	0	$\frac{1}{8}$ "	0	0
	2	$\frac{1}{8}$ "	$\frac{1}{8}$ "	$\frac{1}{4}$ "	$\frac{1}{8}$ "	$\frac{1}{8}$ "
Bent 4	1	$\frac{1}{8}$ "	$\frac{1}{4}$ "	$\frac{1}{4}$ "	$\frac{1}{8}$ "	$\frac{1}{8}$ "
	2	0	0	$\frac{1}{8}$ "	0	0

Note: Thicker masonry & ...
shown in the above table ...

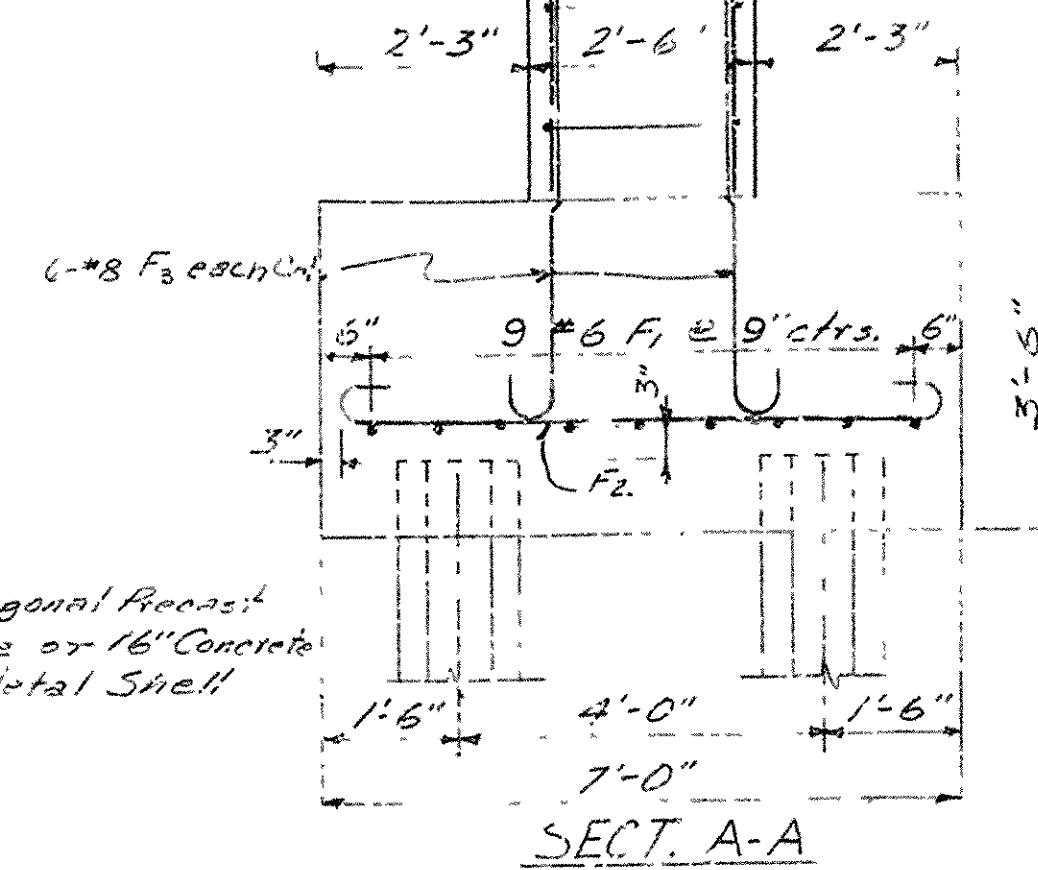


EVALUATION

Showing Cap For Rent 3 in Place

Scale $\frac{1}{2}'' = 1'-0''$

Bent 3 Looking Forward



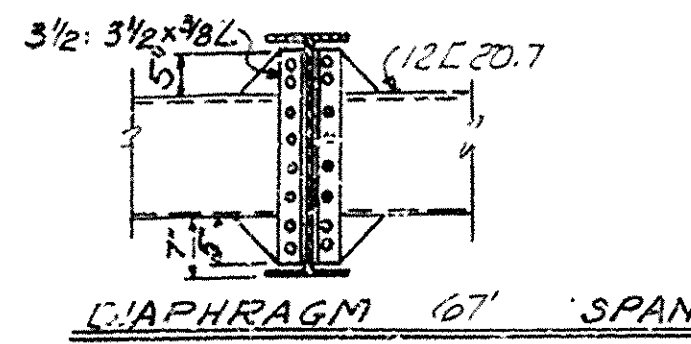
DETAILS OF
BENT'S 2,384
AIRPORT ROAD UNDERPASS
HWY. 31-PRAIRIE CO. LINE
LONOKE COUNTY
INT. ROUTE 40 SEC. 4
ARKANSAS STATE HIGHWAY COMMISSION
LITTLE ROCK, ARK.

DRAWN BY: F.F. DATE: 4-20-62 SCALE: $\frac{1}{2}" = 1'$ or as noted

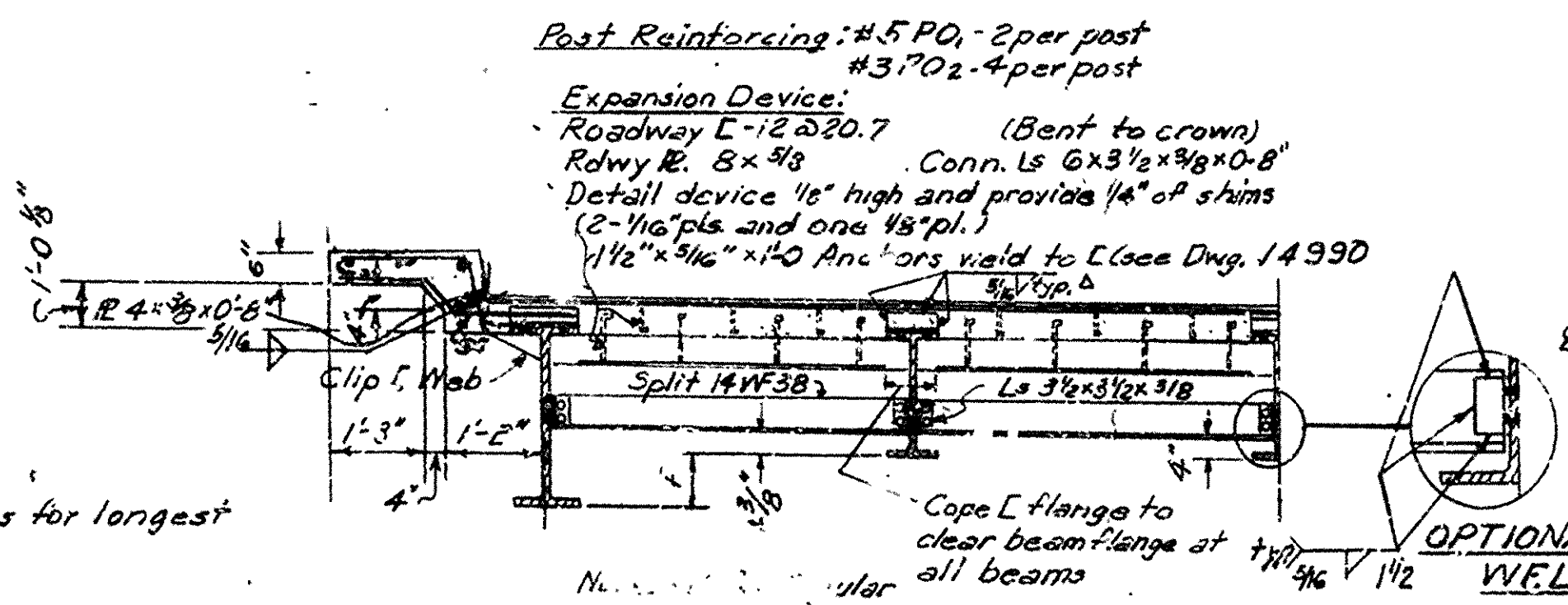
TRACED BY: _____ DATE: _____ SCALE: _____
CHECKED BY: _____ DATE: _____

DRAINING NO. 1000 /

BRIDGE ENGINEER



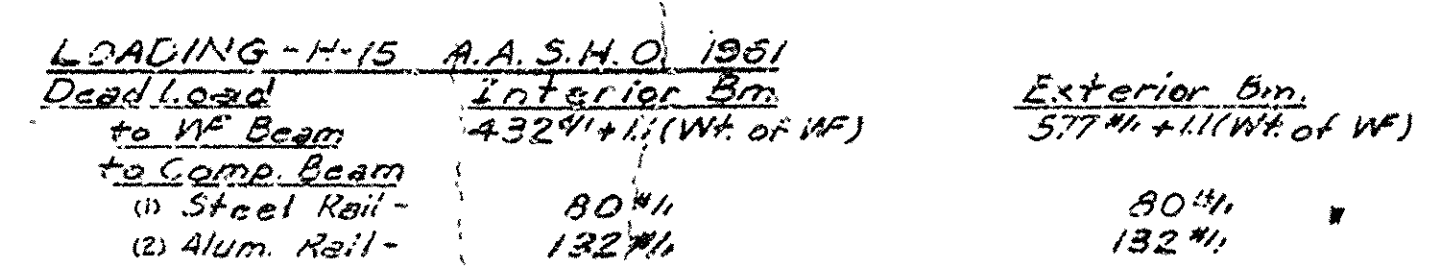
Parapet Type Railing —
Plate Guard Br. Railing
Non-pay Items



HALF SECTION B-B FOR MODIFIED OR REG. SPANS

* 1st. Bms. only																																																																																																																																																																																																																																																																																																																																																																																																																																																																																																																																																																																																																																																																																																																																																																																																																																																																																																																																																																																																																																																																																																			
SPAWN	35	36	37	38	39	40	41	42	43	44	45	46	47	48	49	50	51	52	53	54	55	56	57	58	59	60	61	62	63	64	65	66	67	68	69	70	71	72	73	74	75	76	77	78	79	80	81	82	83	84	85	86	87	88	89	90	91	92	93	94	95	96	97	98	99	100																																																																																																																																																																																																																																																																																																																																																																																																																																																																																																																																																																																																																																																																																																																																																																																																																																																																																																																																																																																																																																	
"3"	6	6	7	7	7	7	7	8	8	8	8	8	8	8	8	8	8	8	8	9	9	9	9	9	10	10	10	10	10	10	10	10	10	10	10	10	10	10	10	10	10	10	10	10	10	10	10	10	10	10	10	10	10	10	10	10	10	10	10	10	10	10	10	10	10	10	10	10	10	10	10	10	10	10	10	10	10	10	10	10	10	10	10	10	10	10	10	10	10	10	10	10	10	10	10	10	10	10	10	10	10	10	10	10	10	10	10	10	10	10	10	10	10	10	10	10	10	10	10	10	10	10	10	10	10	10	10	10	10	10	10	10	10	10	10	10	10	10	10	10	10	10	10	10	10	10	10	10	10	10	10	10	10	10	10	10	10	10	10	10	10	10	10	10	10	10	10	10	10	10	10	10	10	10	10	10	10	10	10	10	10	10	10	10	10	10	10	10	10	10	10	10	10	10	10	10	10	10	10	10	10	10	10	10	10	10	10	10	10	10	10	10	10	10	10	10	10	10	10	10	10	10	10	10	10	10	10	10	10	10	10	10	10	10	10	10	10	10	10	10	10	10	10	10	10	10	10	10	10	10	10	10	10	10	10	10	10	10	10	10	10	10	10	10	10	10	10	10	10	10	10	10	10	10	10	10	10	10	10	10	10	10	10	10	10	10	10	10	10	10	10	10	10	10	10	10	10	10	10	10	10	10	10	10	10	10	10	10	10	10	10	10	10	10	10	10	10	10	10	10	10	10	10	10	10	10	10	10	10	10	10	10	10	10	10	10	10	10	10	10	10	10	10	10	10	10	10	10	10	10	10	10	10	10	10	10	10	10	10	10	10	10	10	10	10	10	10	10	10	10	10	10	10	10	10	10	10	10	10	10	10	10	10	10	10	10	10	10	10	10	10	10	10	10	10	10	10	10	10	10	10	10	10	10	10	10	10	10	10	10	10	10	10	10	10	10	10	10	10	10	10	10	10	10	10	10	10	10	10	10	10	10	10	10	10	10	10	10	10	10	10	10	10	10	10	10	10	10	10	10	10	10	10	10	10	10	10	10	10	10	10	10	10	10	10	10	10	10	10	10	10	10	10	10	10	10	10	10	10	10	10	10	10	10	10	10	10	10	10	10	10	10	10	10	10	10	10	10	10	10	10	10	10	10	10	10	10	10	10	10	10	10	10	10	10	10	10	10	10	10	10	10	10	10	10	10	10	10	10	10	10	10	10	10	10	10	10	10	10	10	10	10	10	10	10	10	10	10	10	10	10	10	10	10	10	10	10	10	10	10	10	10	10	10	10	10	10	10	10	10	10	10	10	10	10	10	10	10	10	10	10	10	10	10	10	10	10	10	10	10	10	10	10	10	10	10	10	10	10	10	10	10	10	10	10	10	10	10	10	10	10	10	10	10	10	10	10	10	10	10	10	10	10	10	10	10	10	10	10	10	10	10	10	10	10	10	10	10	10	10	10	10	10	10	10	10	10	10	10	10	10	10	10	10	10	10	10	10	10	10	10	10	10	10	10	10	10	10	10	10	10	10	10	10	10	10	10	10	10	10	10	10	10	10	10	10	10	10	10	10	10	10	10	10	10	10	10	10	10	10	10	10	10	10	10	10	10	10	10	10	10	10	10	10	10	10	10	10	10	10	10	10	10	10	10	10	10	10	10	10	10	10	10	10	10	10	10	10	10	10	10	10	10	10	10	10	10	10	10	10	10	10	10	10	10	10	10	10	10	10	10	10	10	10	10	10	10	10	10	10	10	10	10	10	10	10	10	10	10	10	10	10	10	10	10	10	10	10	10	10	10	10	10	10	10	10	10	10	10	10	10	10	10	10	10	10	10	10	10	10	10	10	10	10	10	10	10	10	10	10	10	10	10	10	10	10	10	10	10	10	10	10	10	10	10	10	10	10	10	10	10	10	10	10	10	10	10	10	10	10	10	10	10	10	10	10	10	10	10	10	10	10	10	10	10	10	10	10	10	10	10	10	10	10	10	10	10	10	10	10	10	10	10	10	10	10	10	10	10	10	10	10	10	10	10	10	10	10	10	10	10	10	10	10	10	10	10	10	10	10	10	10	10	10	10	10	10	10	10	10	10	10	10	10	10	10	10	10	10	10	10	10	10	10	10	10	10	10	10	10	10	10	10	10	10	10	10	10	10	10	10	10	10	10	10	10	10	10	10	10	10	10	10	10	10	10	10	10	10	10	10	10	10	10	10	10	10	10	10	10	10	10	10	10	10	10	10	10	10	10	10	10	10	10	10	10	10	10	10	10	10	10	10	10	10	10	10	10	10	10	10	10	10	10	10	10	10	10	10	10	10	10	10	10	10	10	10	10	10	10	10	10	10	10	10	10	10	10	10	10	10	10	10	10	10	10	10	10	10	10	10	10	10	10	10	10	10	10	10

- Ornit shear connectors on outside beams of modified spans when using beams shown to right of heavy line.



Note: Adopted from Drawing 5430.

LITTLE ROCK, ARK.
DRAWN BY: WAS DATE: 4-16-62
TRACK: DATE: SCALE: 1/2"=1'-0"
CHECKED BY: FMH DATE: 4-19-62
BRIDGE NO. 3656 DRAWING NO. 15006