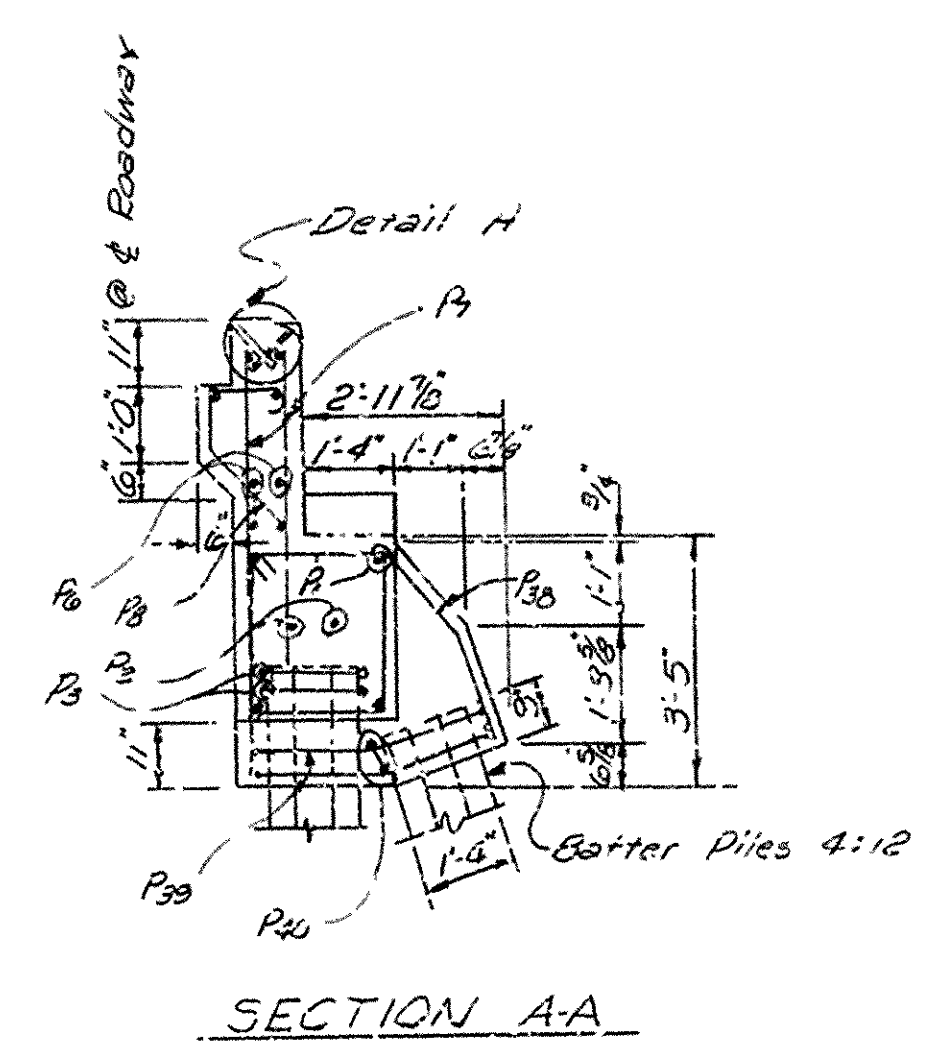
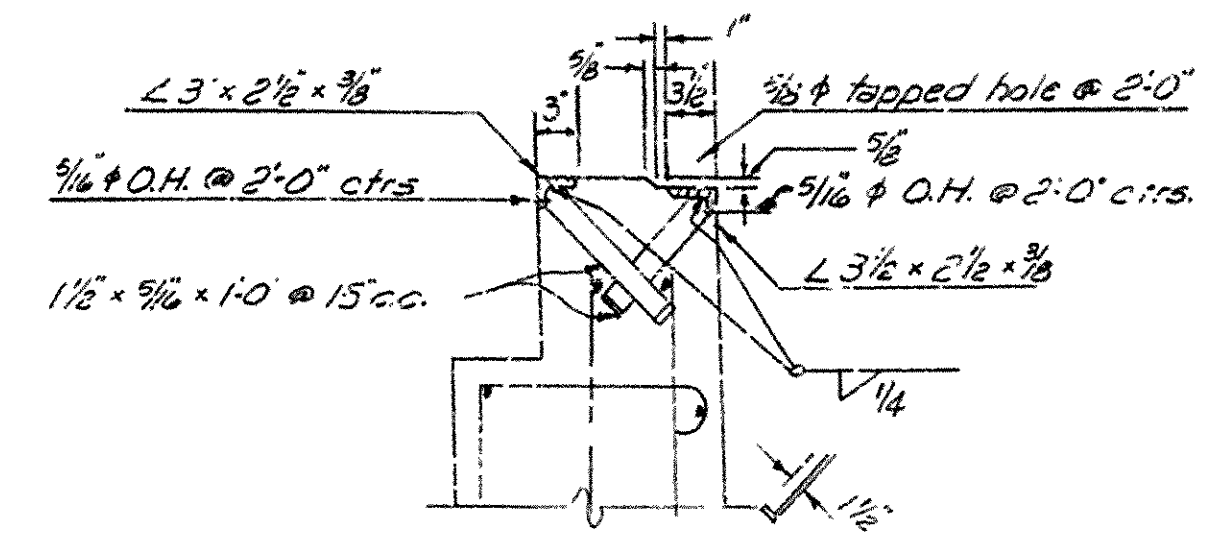
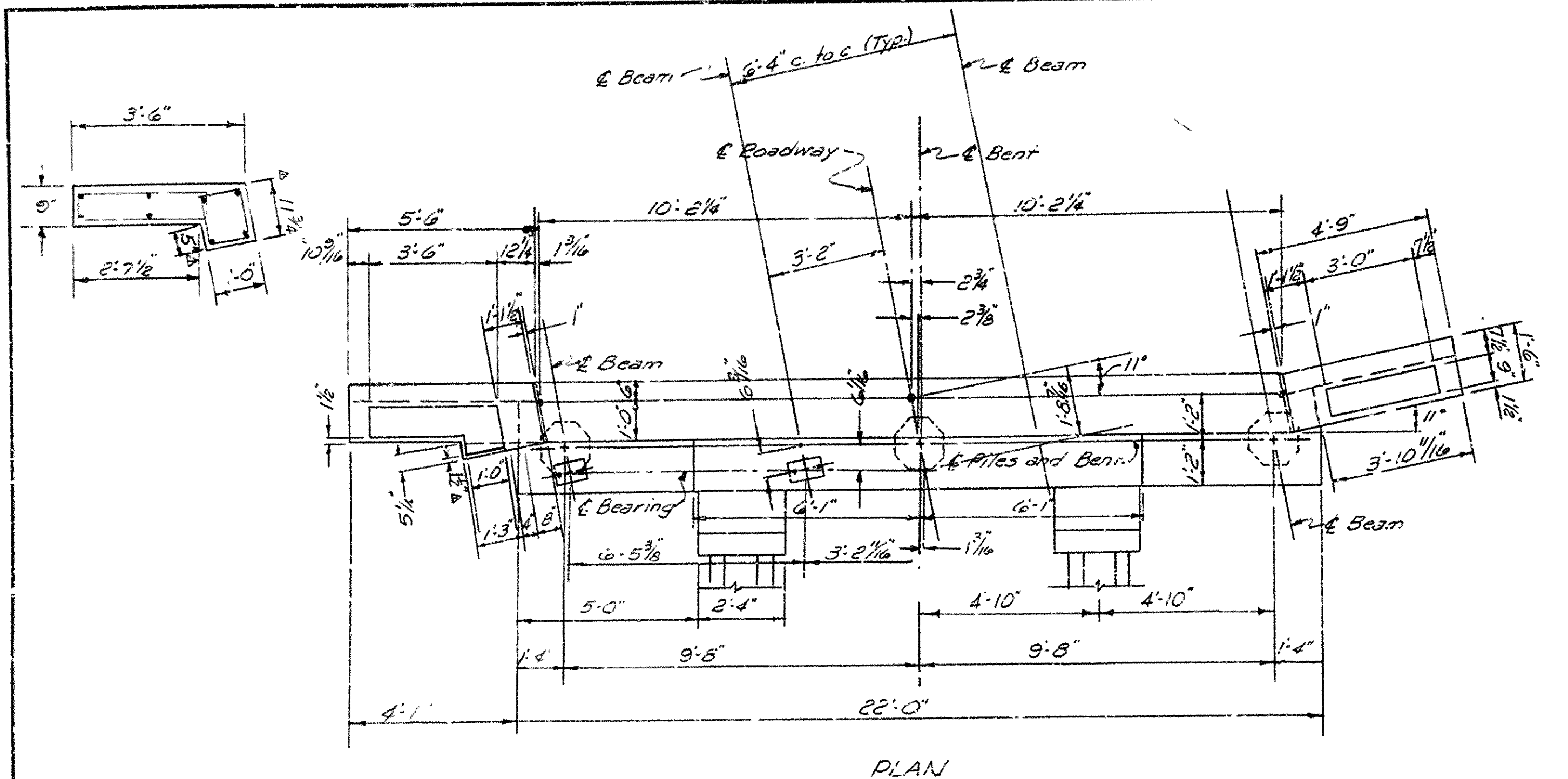


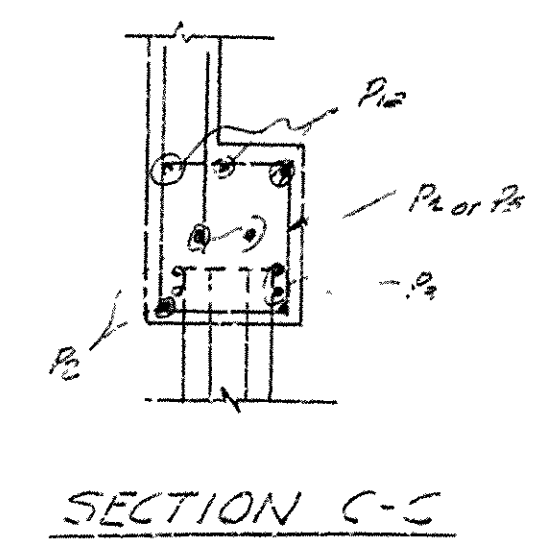
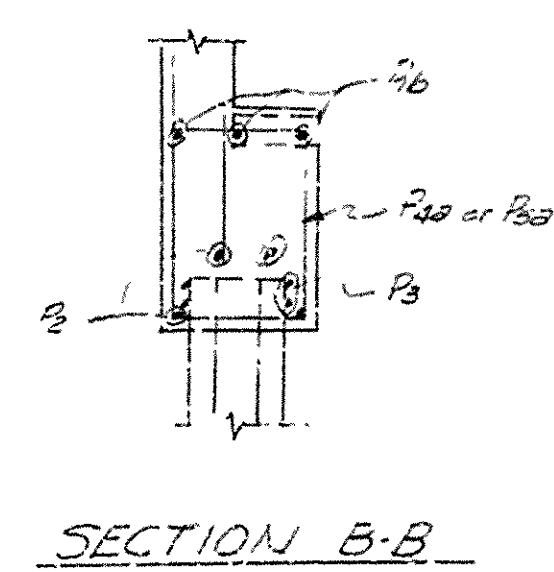
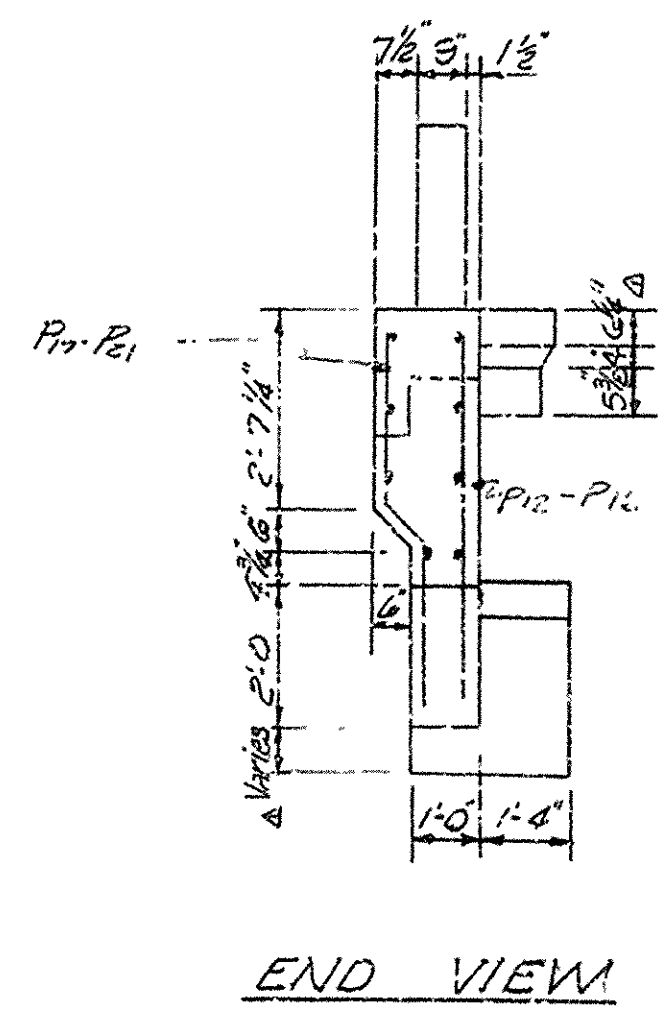
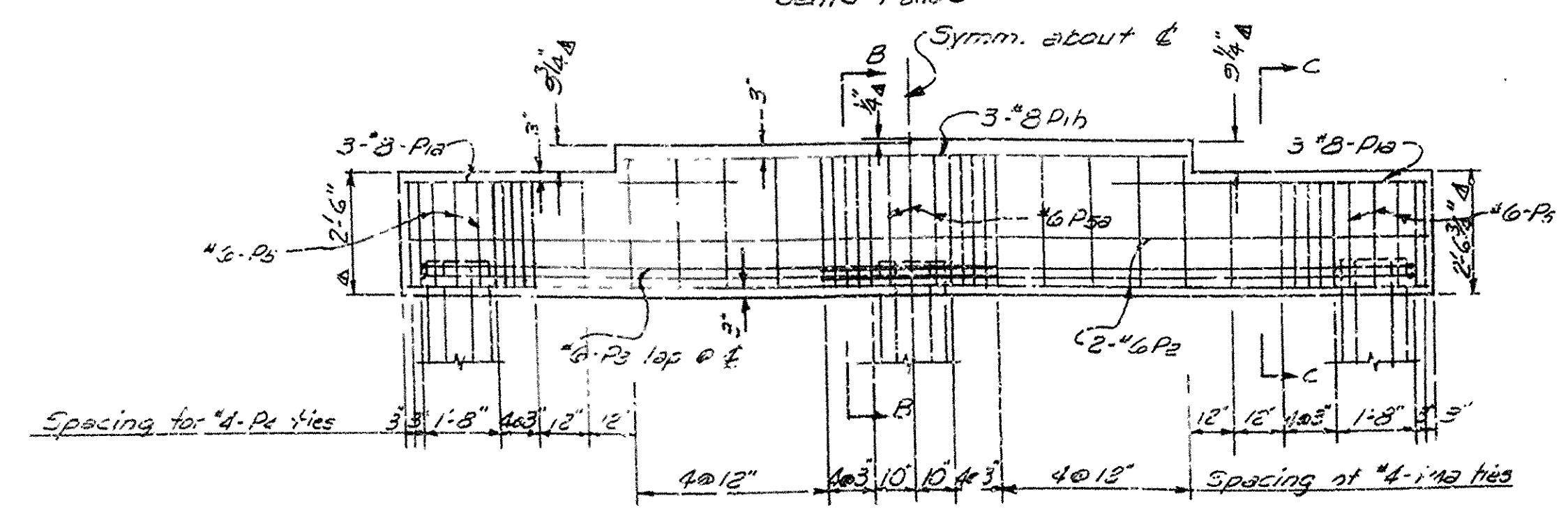
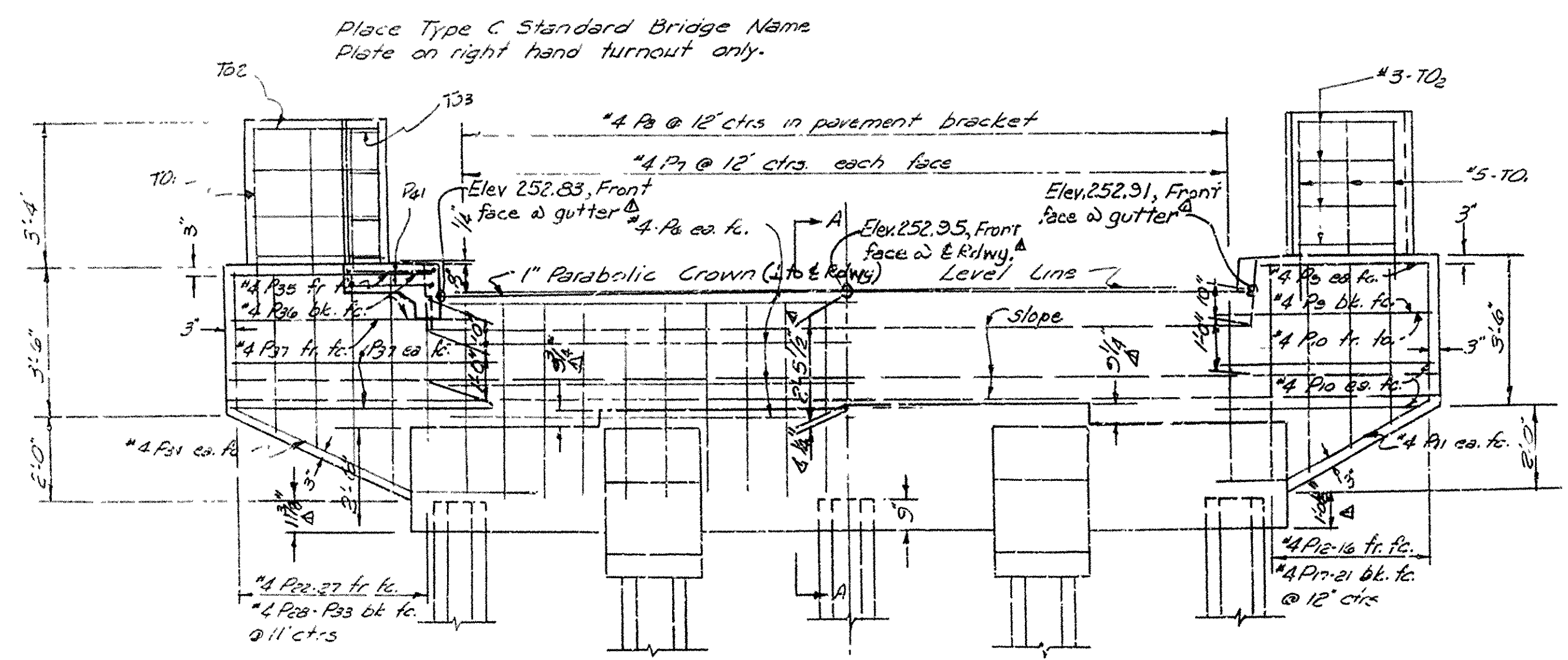


I-40-4(10) 41 165  
66816



# BAR LIST

MARK	SIZE	NO	LENGTH	A	B	PIN DIA	BENDING DIAGRAMS
P10	#3	6	8'-0"	-	-	STE	
P16	#3	3	11'-10"	-	-	STE	
P2	#6	4	21'-8"	-	-	STE	
P3	#6	4	20'-9"	11'-9"	1'-5"	2 1/4"	
P4	#4	16	3'-9"	2'-1 1/2"	1'-11 1/2"	1 1/2"	



GENERAL NOTES

All concrete to be Class 5. All exposed corners to have 3/4" chamfer unless otherwise noted.  
All piling shall be driven to a minimum capacity of 36 tons per pile. Piling shall be 16" Octagonal Precast Concrete Piles or concrete filled metal shell piles.

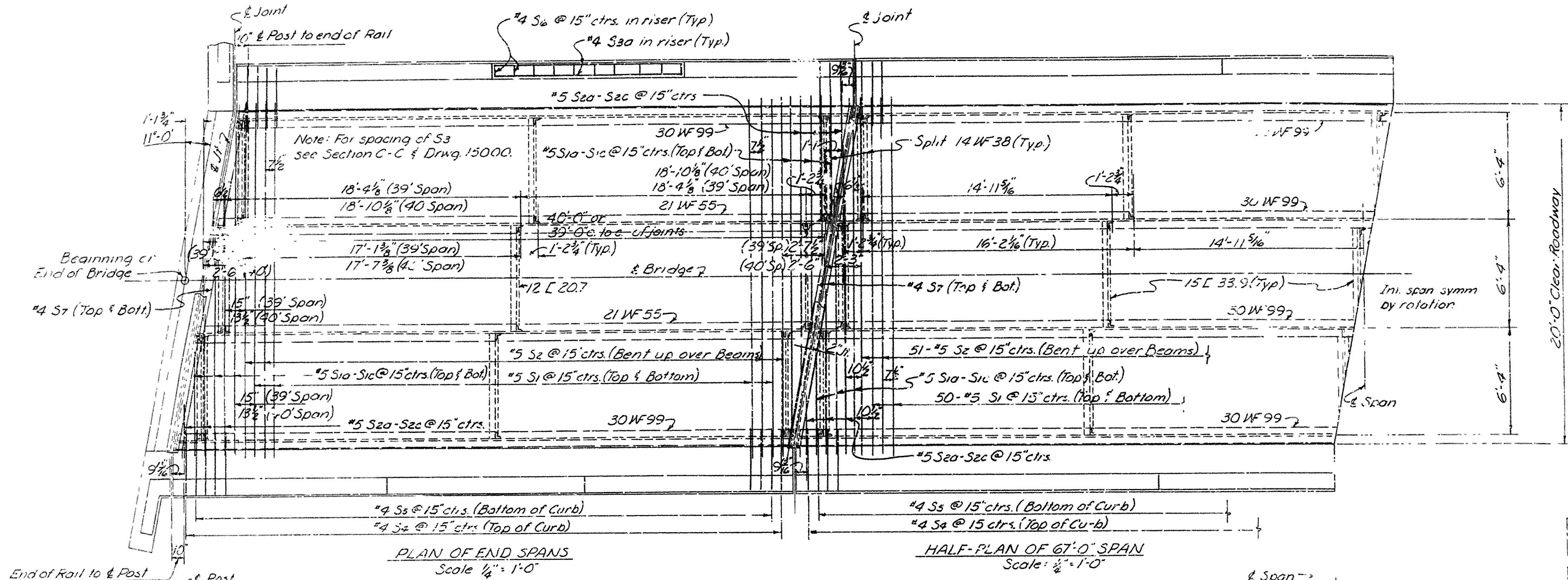
DETAILS OF END BENTS  
EAST LONOKE UNDERPASS  
HWY 31 - PRAIRIE CO. LINE  
LONOKE COUNTY  
INT. ROUTE 40 SEC. 4  
ARKANSAS STATE HIGHWAY COMMISSION  
LITTLE ROCK, ARK.

DRAWN BY: DEL DATE: 8-24-62  
TRACED BY: DATE: 8-26-62  
CHECKED BY: FMH DATE: 8-26-62  
BRIDGE NO. 3652 DRAWING NO. 11996

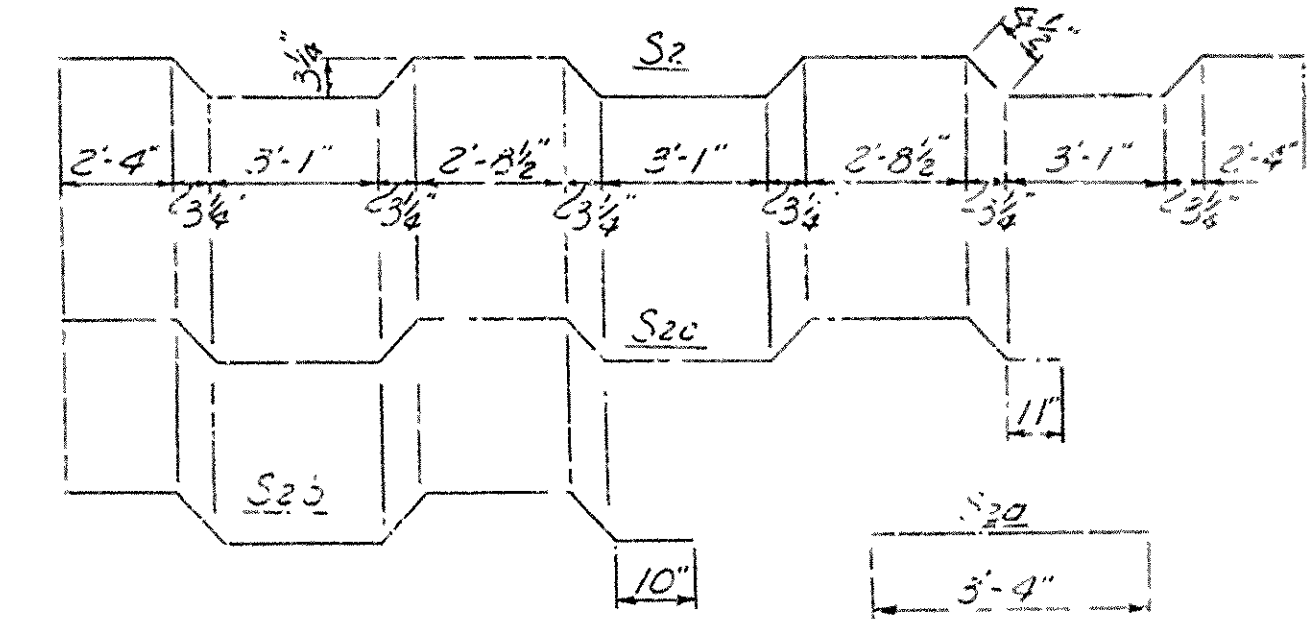
Revised 6-3-63. FMH CHRD. FMH



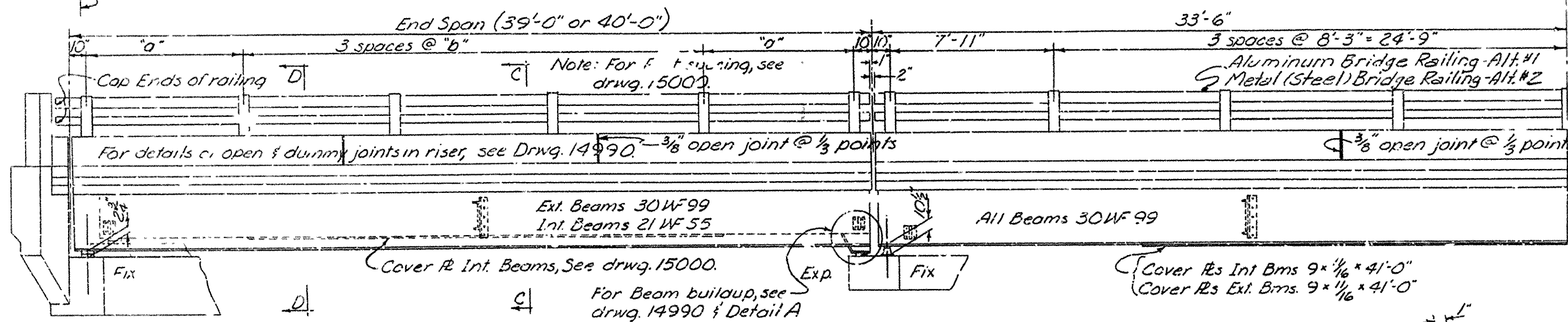
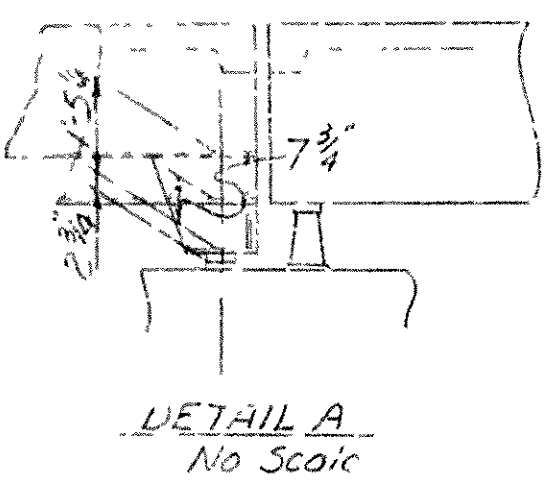




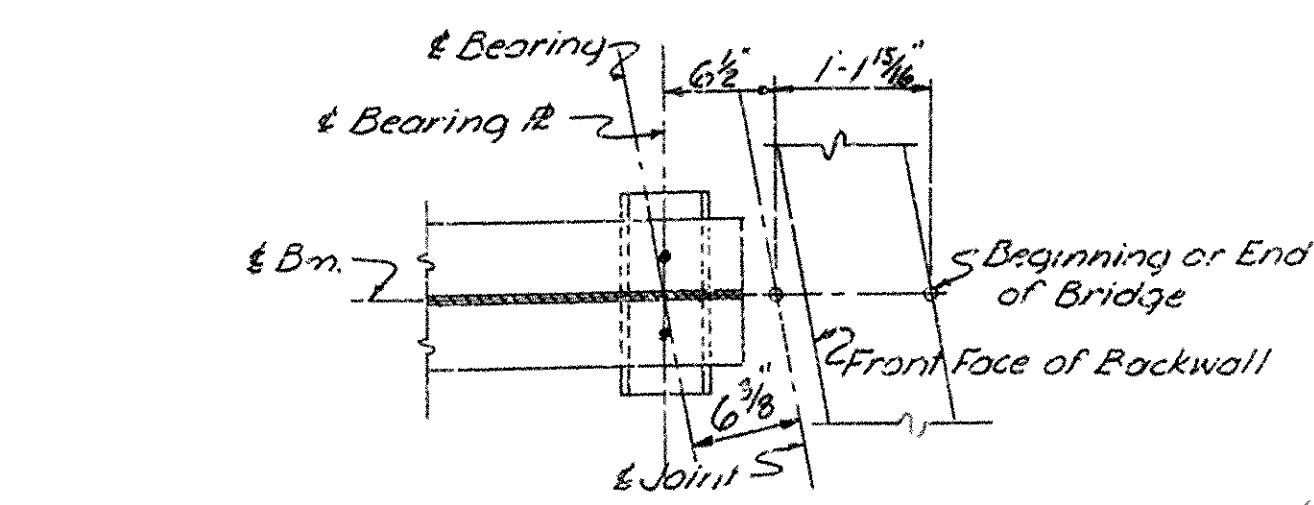
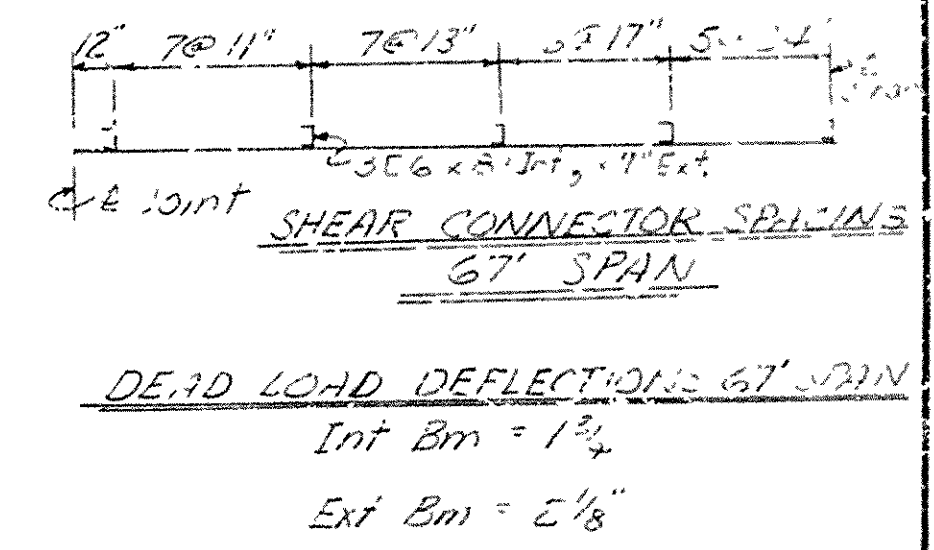
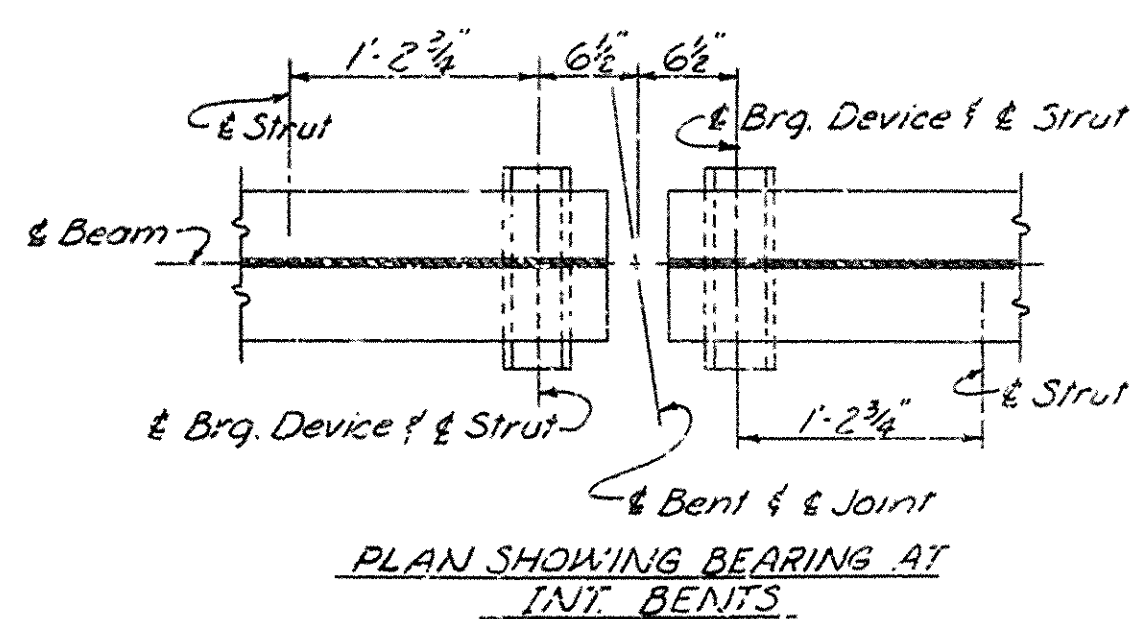
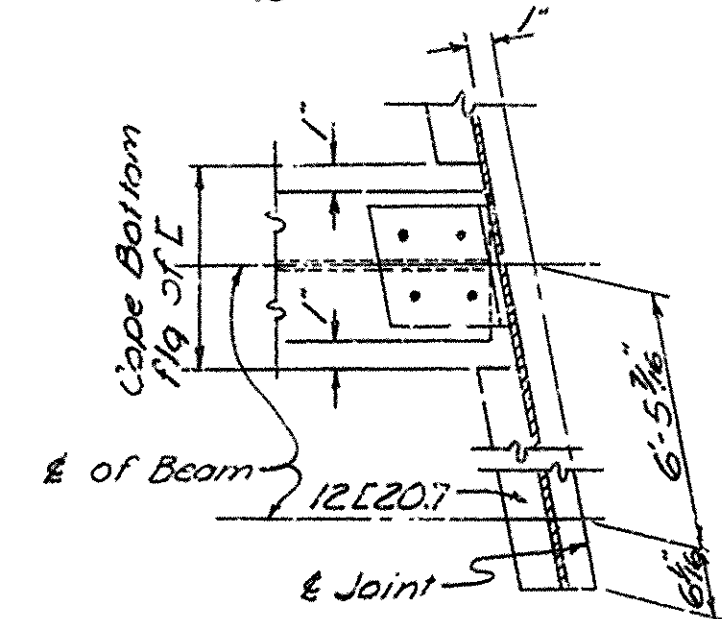
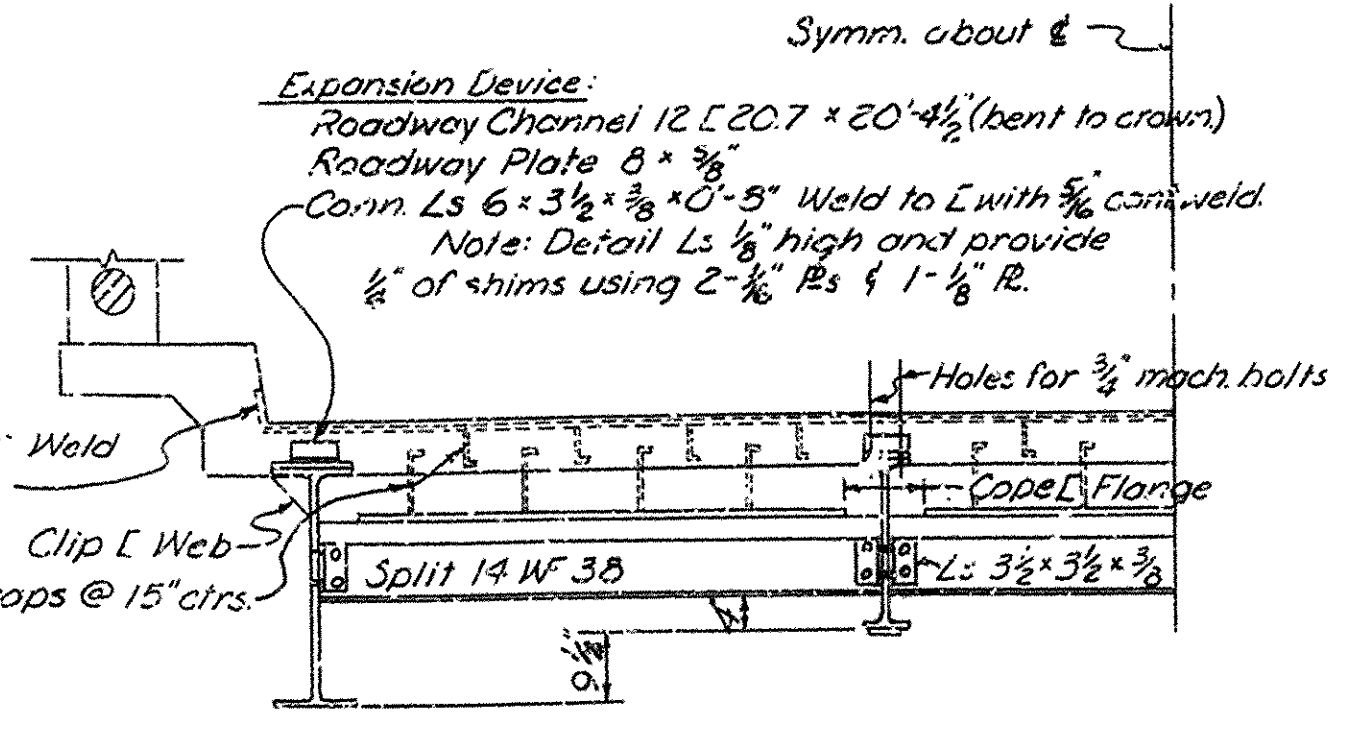
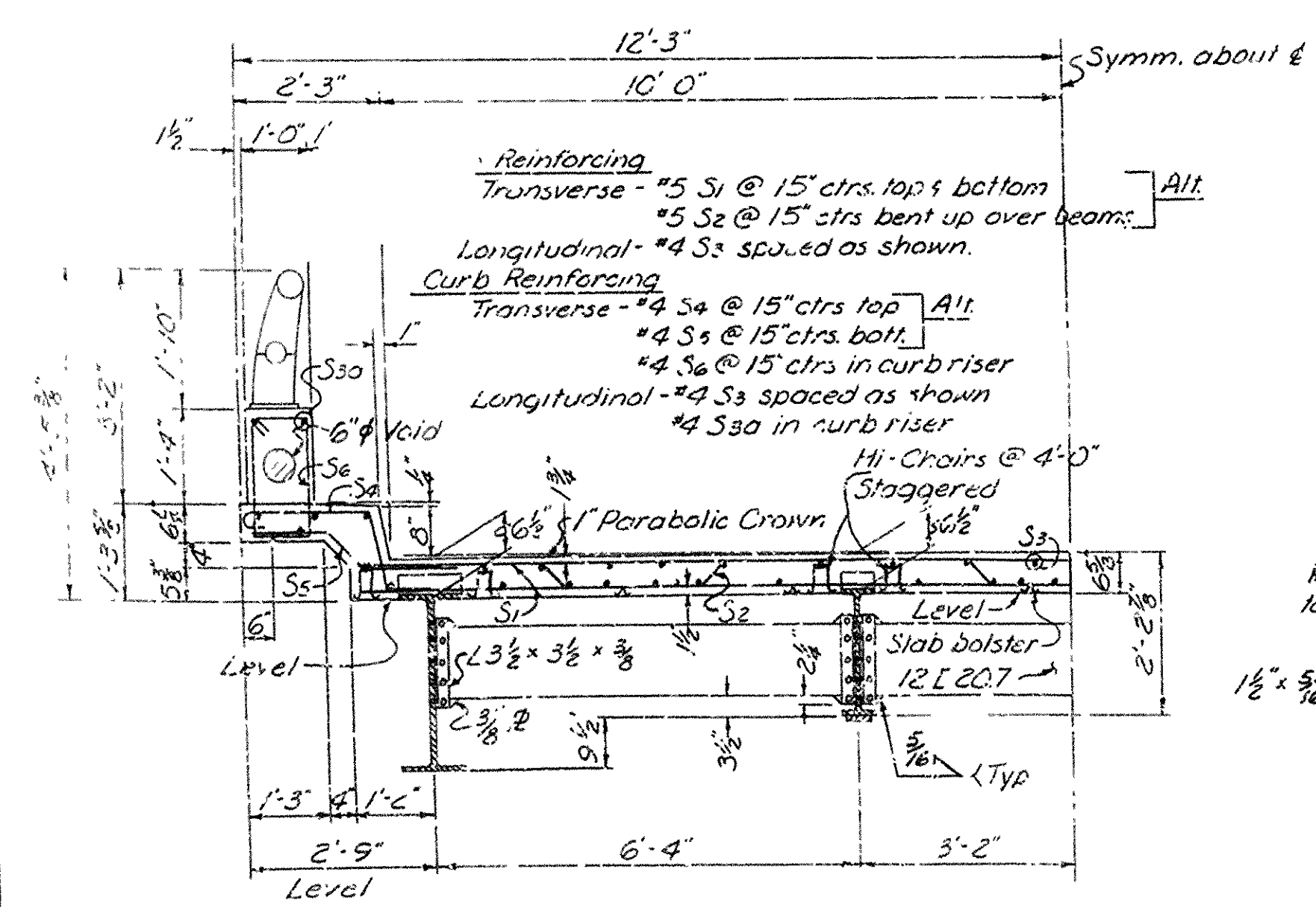
BAR LIST									
Bar	Size	39' Sp.	40' Sp.	40' Sp.	40' Sp.	40' Sp.	40' Sp.	40' Sp.	Pin
S1	5	27	50	28	21'-0"	21'-0"	21'-0"	21'-0"	Str.
S1a	5	4	4	4	6'-7"	6'-7"	6'-7"	6'-7"	Str.
S1b	5	4	4	4	13'-0"	13'-0"	13'-0"	13'-0"	Str.
S1c	5	4	4	4	19'-5"	19'-5"	19'-5"	19'-5"	Str.
S2	5	28	51	29	21'-6"	21'-6"	21'-6"	21'-6"	1 1/2"
S2a	5	2	2	2	3'-4"	3'-4"	3'-4"	3'-4"	Str.
S2b	5	2	2	2	10'-0"	10'-0"	10'-0"	10'-0"	1 1/2"
S2c	5	2	2	2	16'-6"	16'-6"	16'-6"	16'-6"	1 1/2"
S3	4	54	162	54	38'-6"	38'-6"	38'-6"	38'-6"	Str.
S3a	4	12	12	12	12'-5"	12'-5"	12'-5"	12'-5"	Str.
S4	4	64	108	66	5'-6"	5'-6"	5'-6"	5'-6"	1 1/2"
S4a	4	62	106	64	3'-6"	3'-6"	3'-6"	3'-6"	1 1/2"
S4b	4	64	108	66	5'-4"	5'-4"	5'-4"	5'-4"	1 1/2"
S5	4	4	4	4	21'-4"	21'-4"	21'-4"	21'-4"	Str.



Note: Dimensions from ctr to ctr of bars. For Bending Diagram of S4, S5, S6, see drwg. 15000.



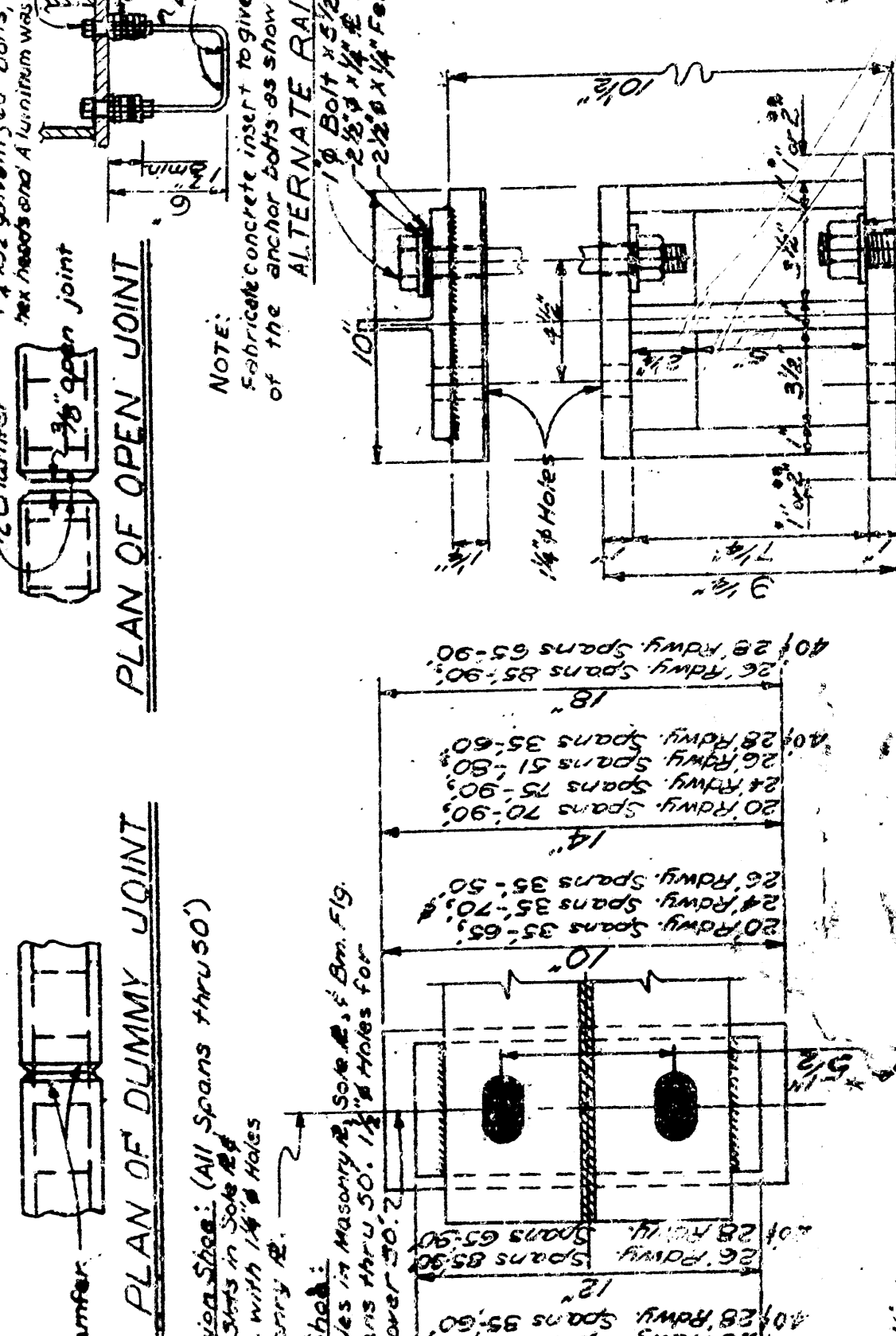
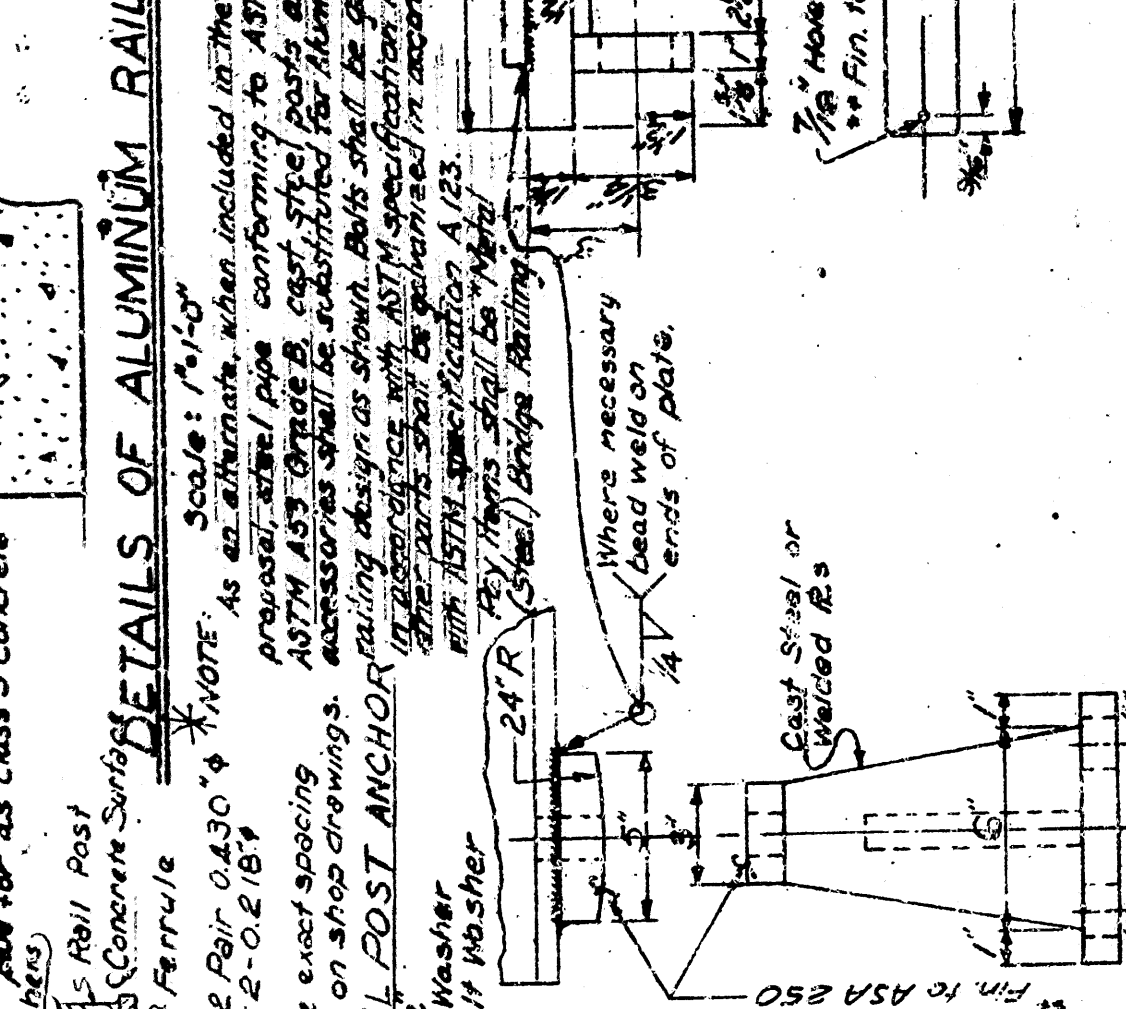
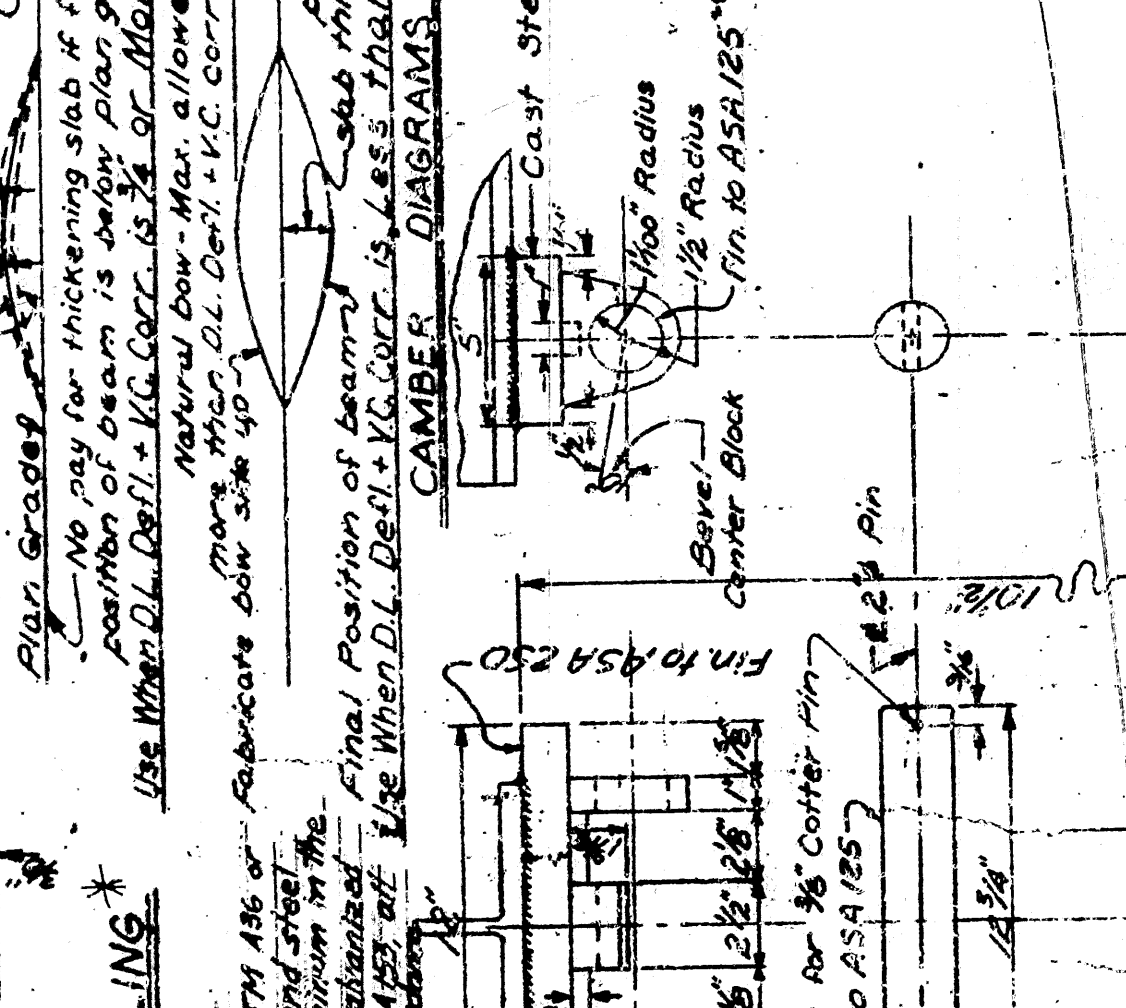
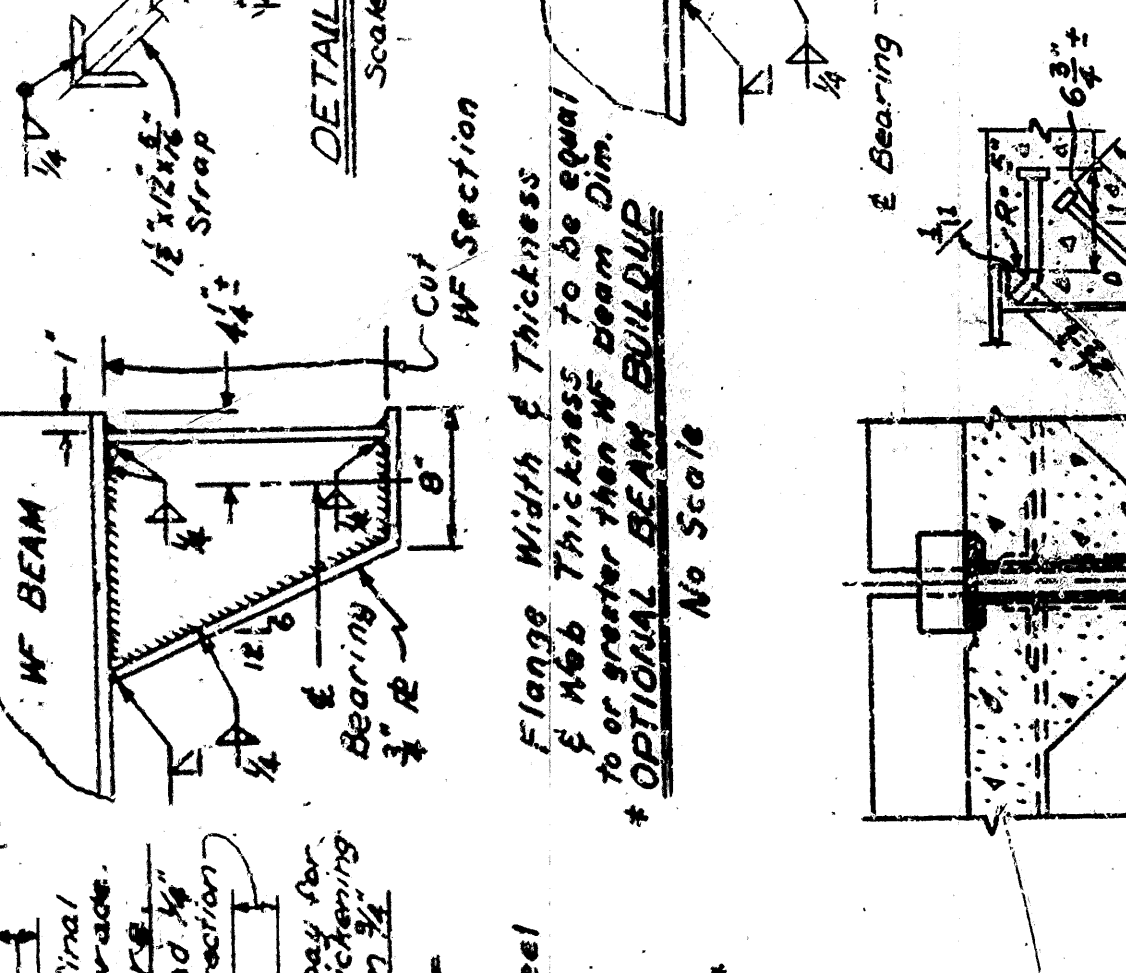
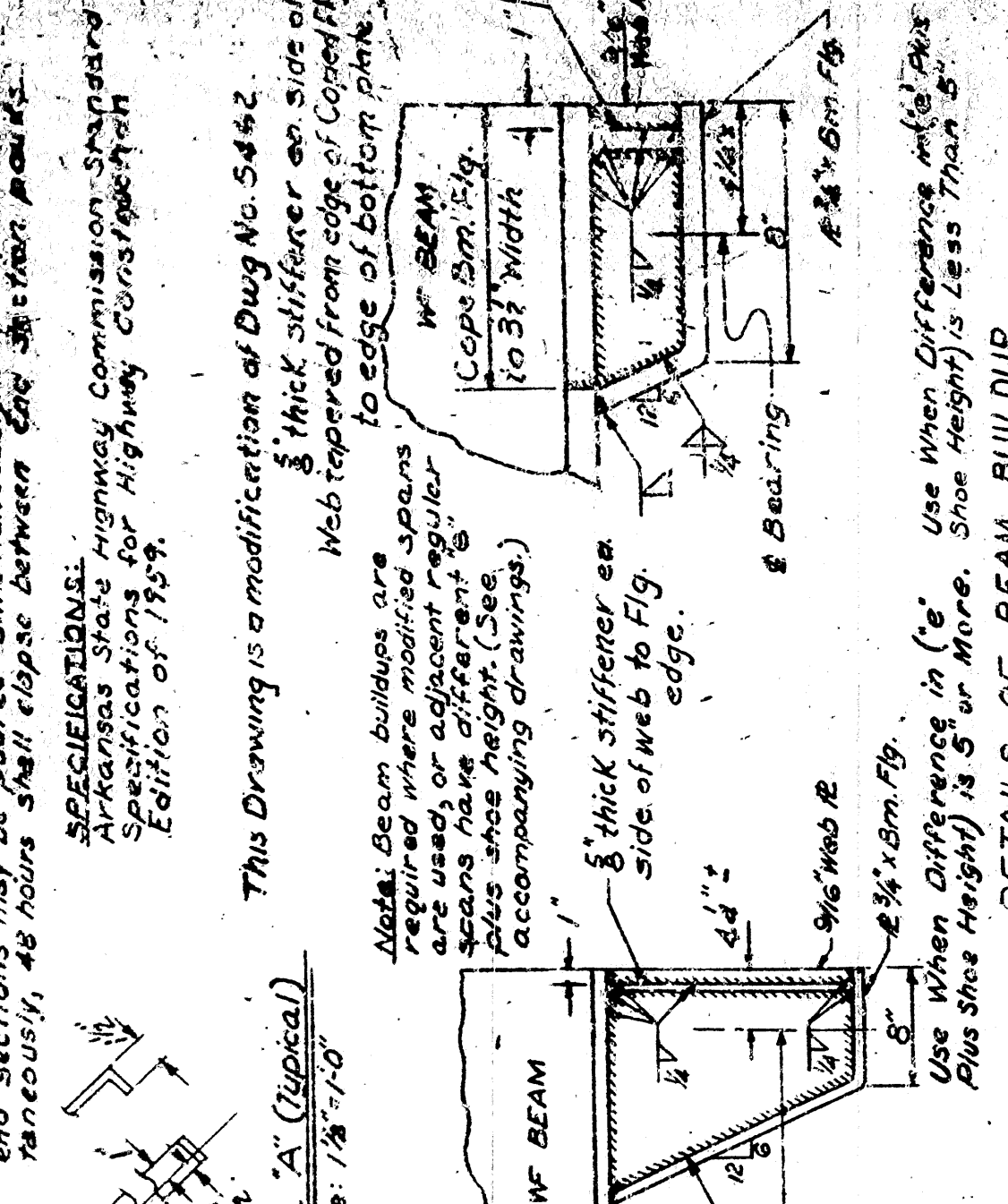
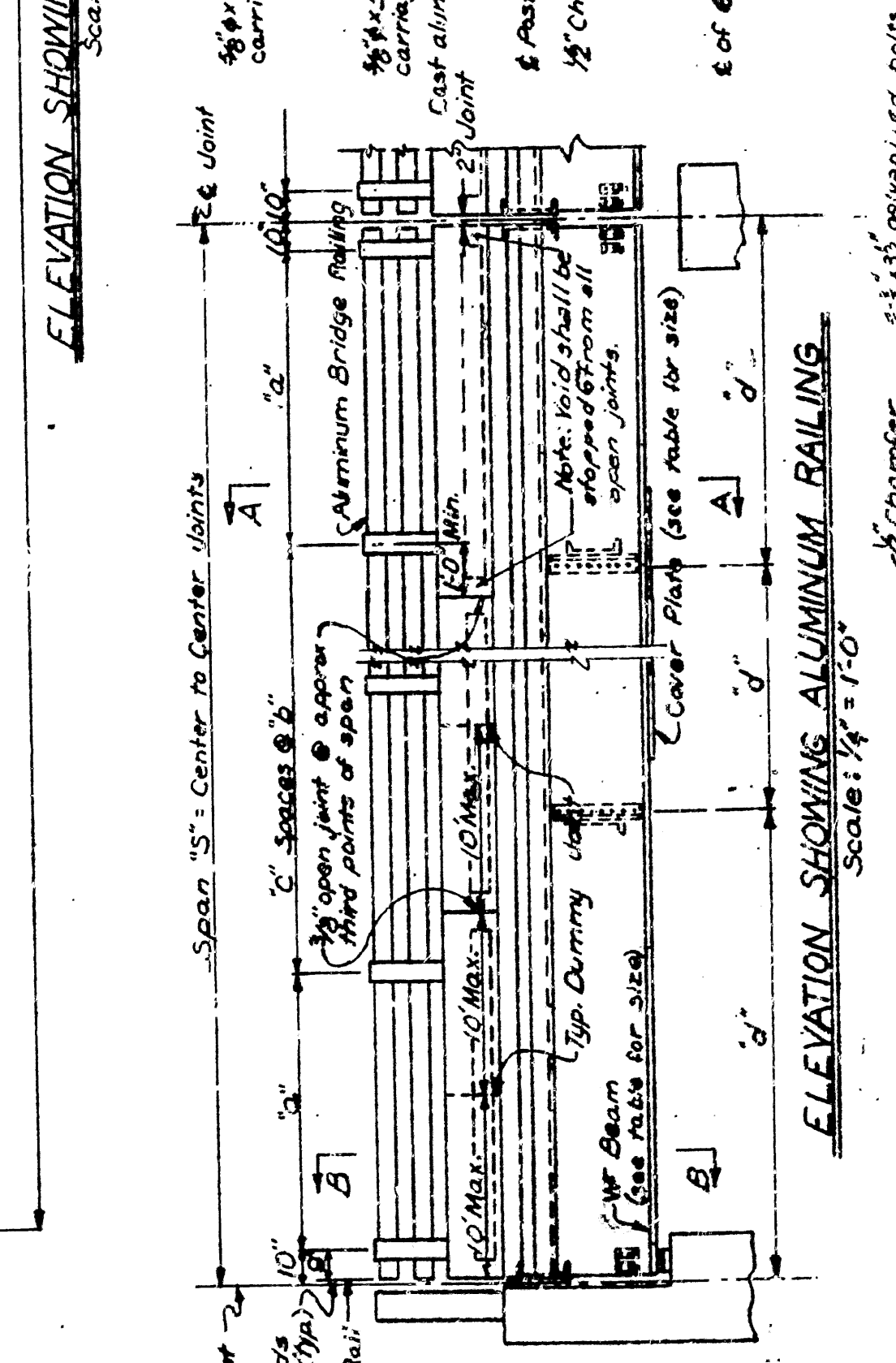
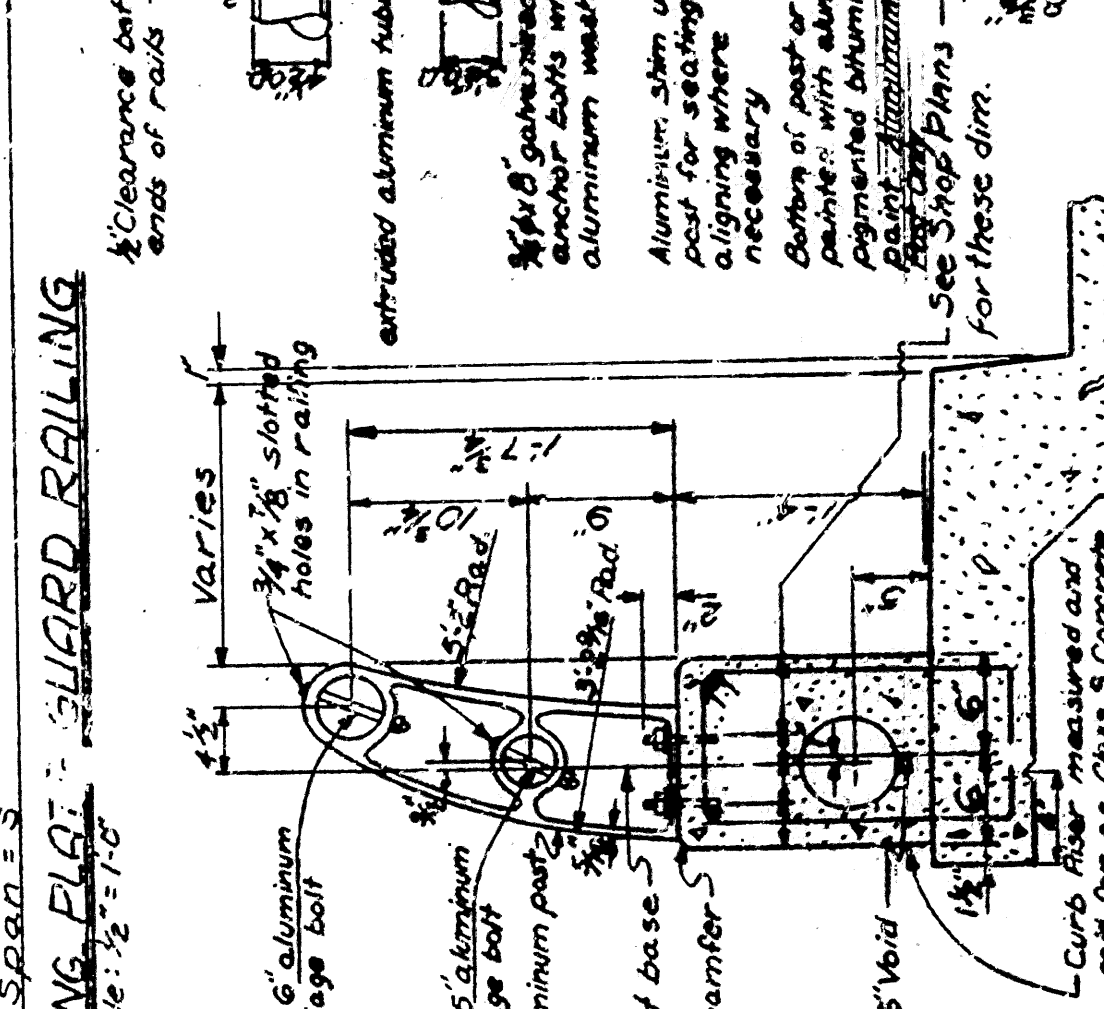
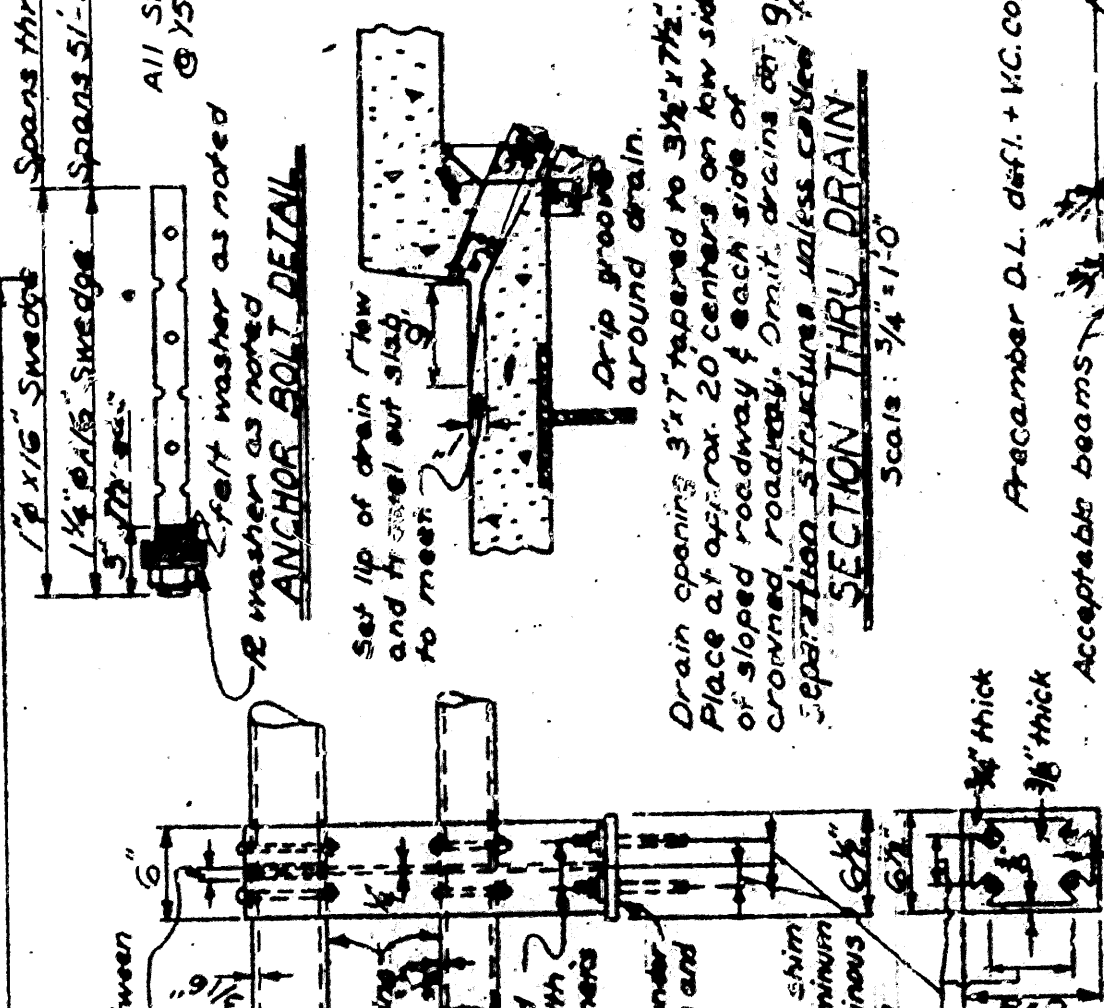
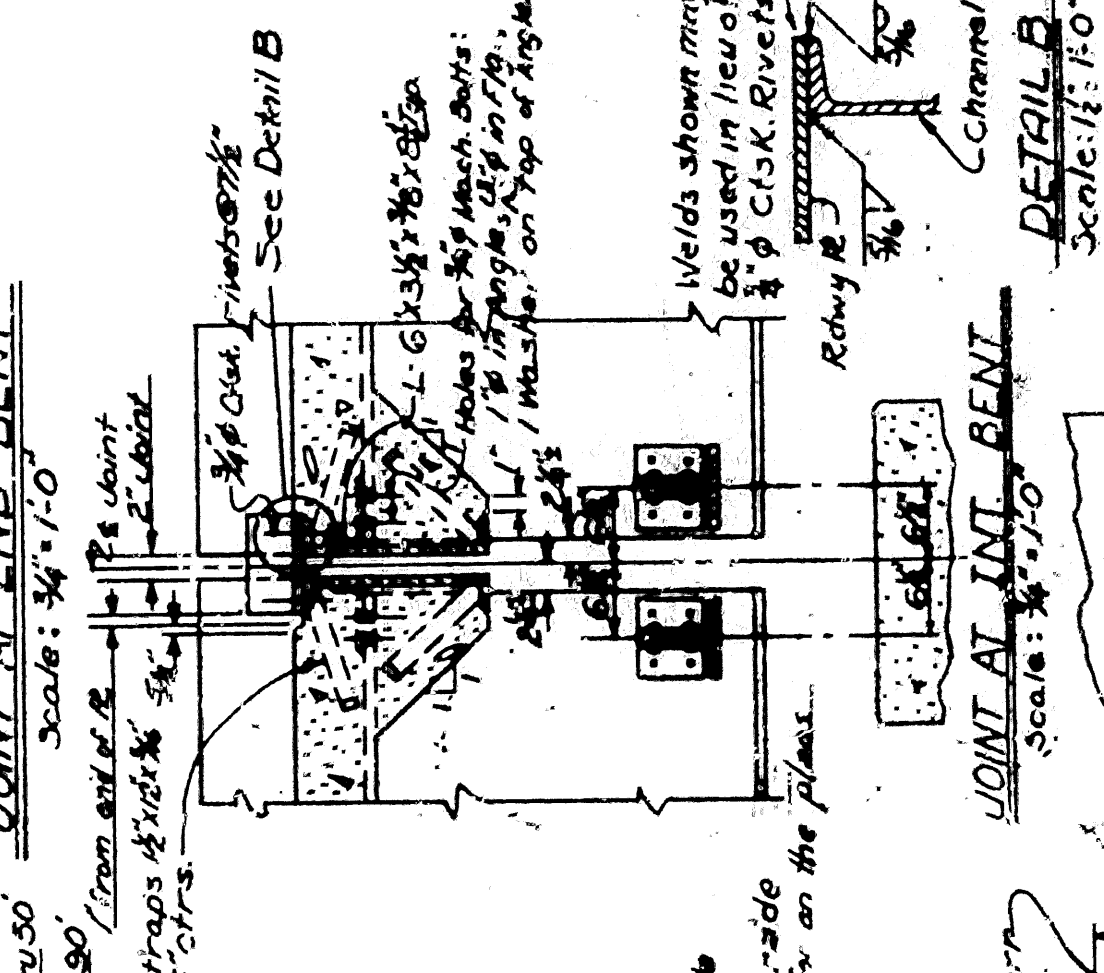
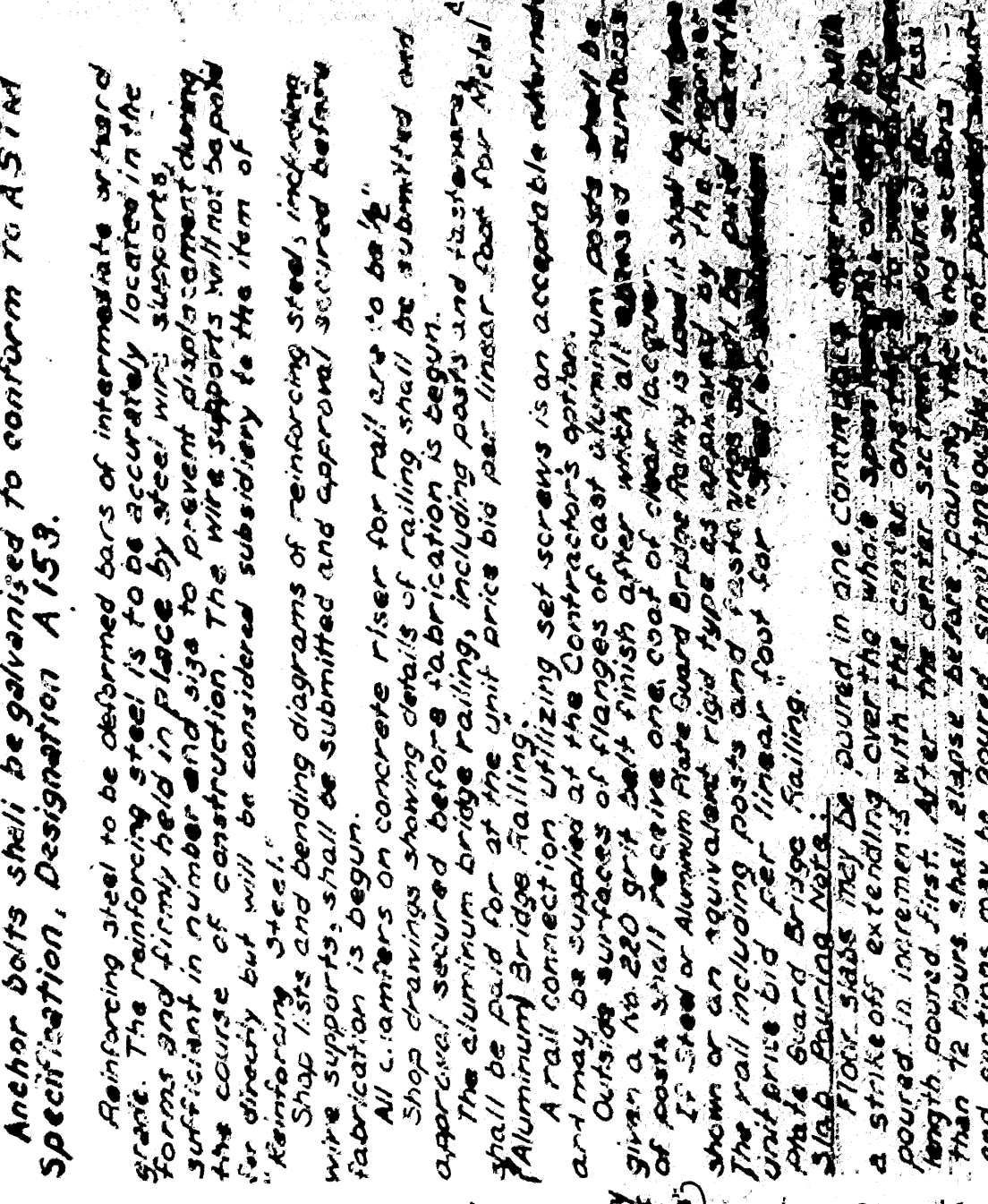
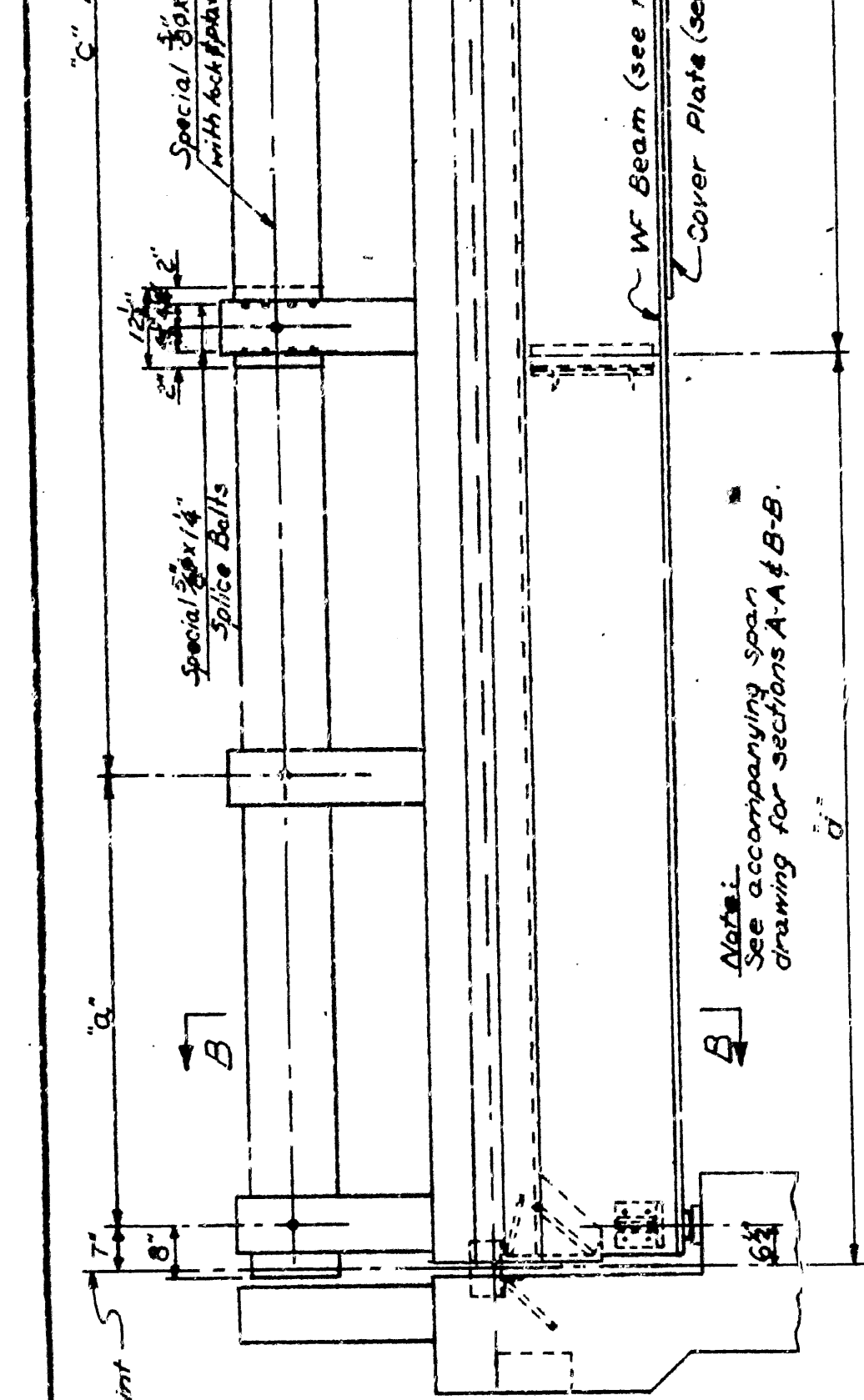
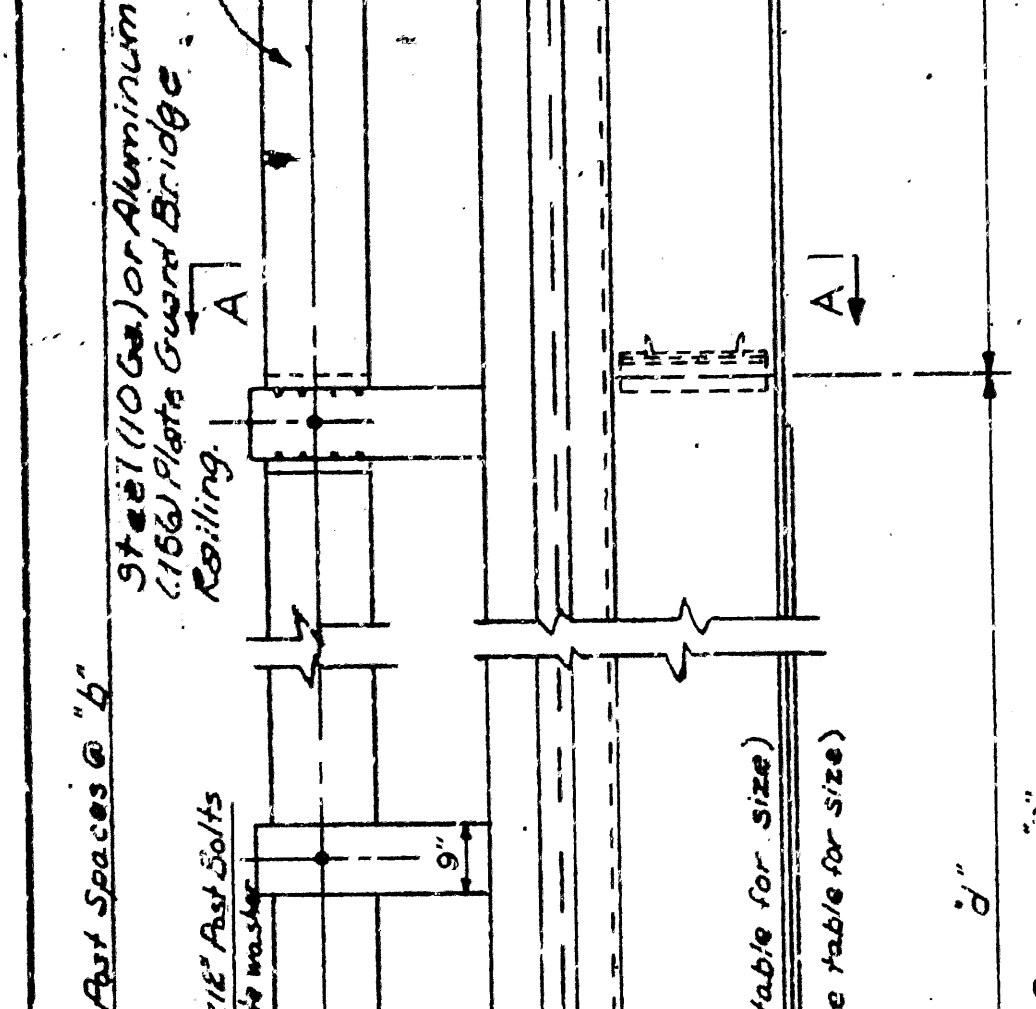
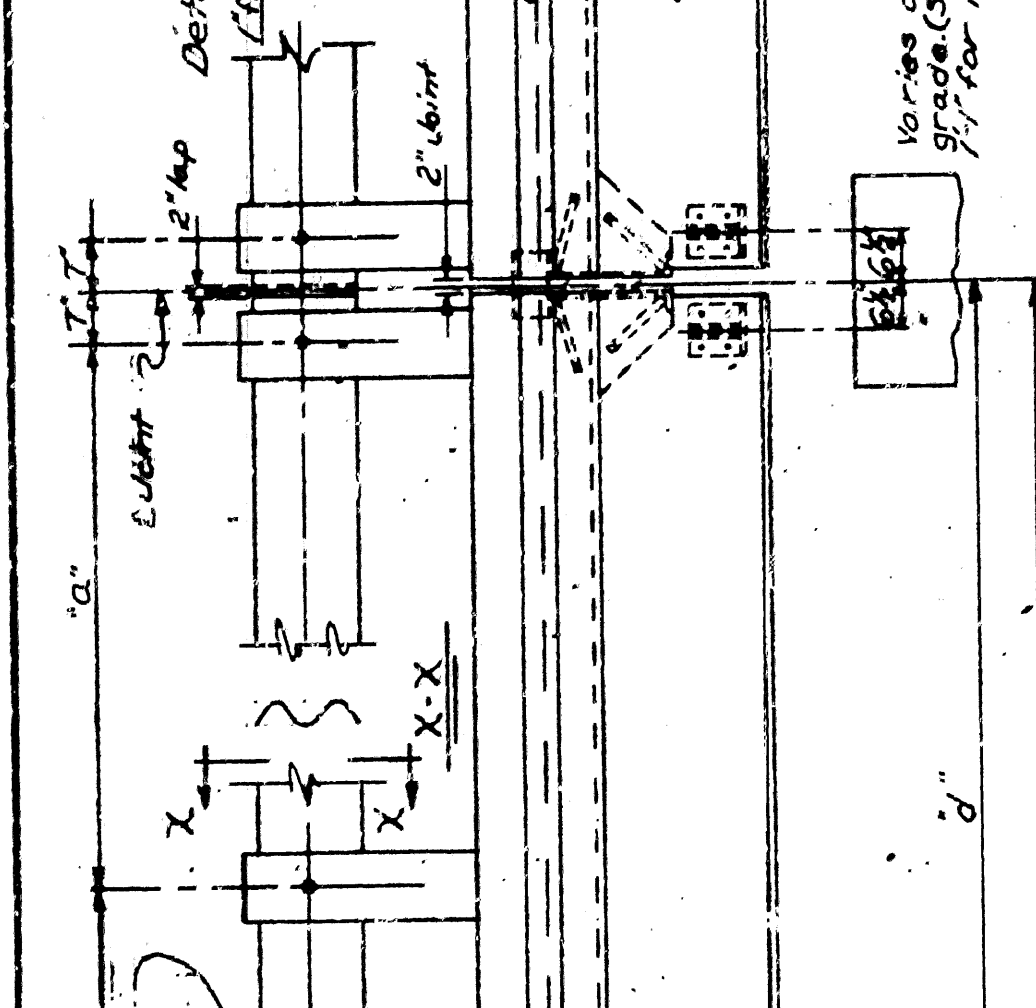
Note: For General notes & details not shown, see Drwg. Nos. 14990, 15000.



DETAILS OF SUPERSTRUCTURE  
EAST LONOKE UNDERPASS  
HWY. 31 - PRAIRIE CO. LINE  
LONOKE COUNTY  
INT. ROUTE 40 SEC. 4  
ARKANSAS STATE HIGHWAY COMMISSION  
LITTLE ROCK, ARK.

DRAWN BY: RWM DATE: 4-20-62  
TRACED BY: FMH DATE: 1-26-62  
CHECKED BY: FMH DATE: 1-26-62  
BRIDGE NO. 3652 DRAWING NO. 11098



[illegible]

Details of Beam Spans  
 No Scale  
 Details Common to Standard 35'-0" and 40'-0" Spans  
 Composite I-Beam Spans  
 20', 24', 26', 28', & 40' Roadways  
 Plate Anchors  
 1/4" x 1'-0"  
 2-726-63 U.S.  
 2-Optional Beam  
 1-Optional Anchor  
 1-24-66 U.S.  
 RE-DRAWN BY 6772 DATE 5/15/68  
 TRACED BY DATE  
 RE-CHECKED BY LK DATE 3-3-68  
 BRIDGE NO. 14990  
 DRAWING NO. 14990

[illegible]

The drawing shows a top-down view of a shoe sole plate assembly. It includes several dimensioned rectangles and circles. Key dimensions include:

- A horizontal rectangle at the bottom left with width 6 1/8" and height 1 1/2".
- A larger central rectangle with width 9 1/2" and height 3 3/8".
- A small circle with diameter 1 1/2" located near the center.
- A vertical rectangle on the right side with width 1 1/2" and height 1 1/2".
- A circular feature on the far right with diameter 1 1/2".

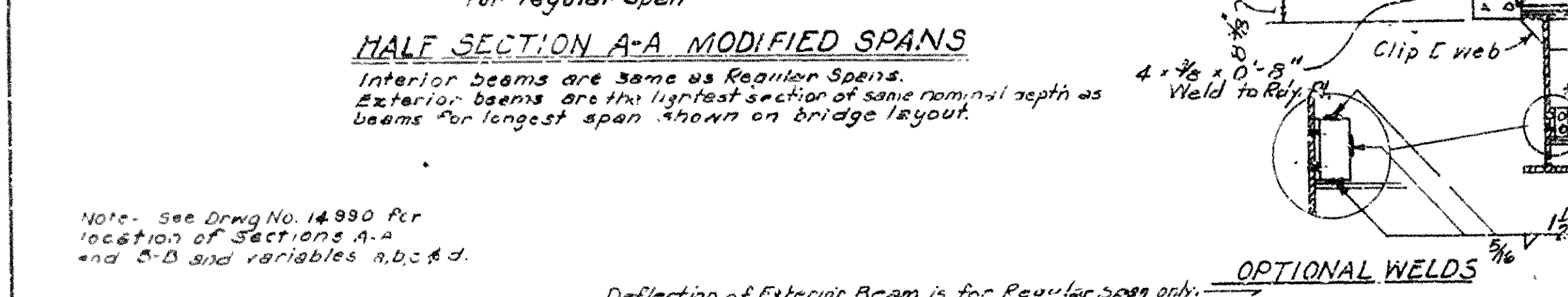
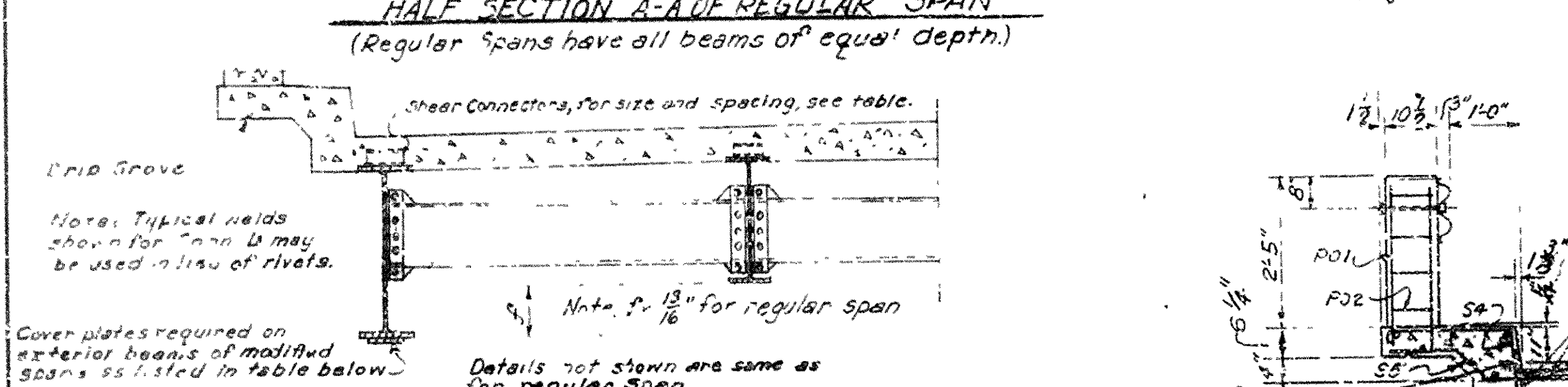
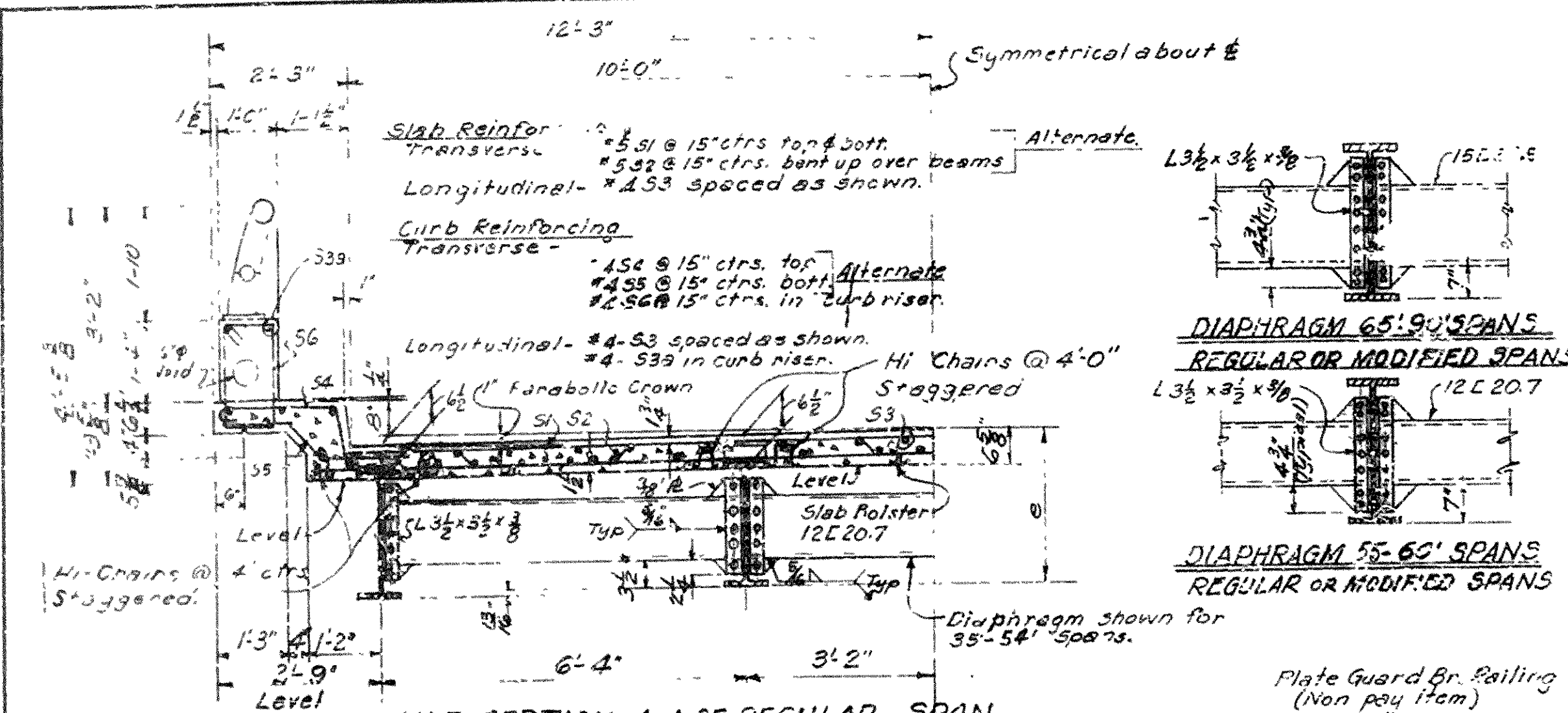
Revision notes are written around the drawing:

- Revised Shoe:** is made from plate or wrought iron surfaces joined by lap welds, all others shall be joined by bead welds.
- Revised Sole Plate:** increase the thickness of fixed bearing sole plate.
- Revised Bearing Masonry Plate:** repair is on the masonry surface.
- Revised Plate Thickness on Layout or Intermediate Best Drawing.**
- Δ Revised Railing Note 2-12-23 DEL**
- Revised Railing 10-29-20 CFM**
- Revised: Fin for bearing plate**
- and shaps: 11-1-20 RWR**

At the bottom right, there is a label "SHOE" next to a rectangular box.

[illegible]





SPAN	REGULAR SPAN			H.W.T. SPACING FOR ALUM. RAILING			MODIFIED SPAN EXTERIOR BEAMS RES. - FINE COVER #			POST SPACING FOR ALUM. RAILING			DEADLOAD DEFLECTION	STRUT SPACING NO. 8'S	VALUES OF DEADLOAD DEFLECTIONS FOR EXTERIOR BEAMS OF MODIFIED SPANS									
	BEAM	COVER	PLATES	a	b	c	BEAM	COVER	PLATE	a	b	c			INT.	EXT.	F	Δ	F	Δ	F	Δ	F	Δ
35	21WF55	4x3/8x15-0	-	6'-4"	8'-4"	2				5'-7"	5'-8"	4	2'-2"	7'-6"	9'-8"	2@17'-6"	3'-2"	3'-6"	4'-0"	4'-4"	4'-8"	5'-2"	5'-6"	
36		4x3/8x15-0	4x3/8x17-0	6'-8"	7'-0"	3				5'-7"	5'-11"	4	1'-2"	7'-6"	9'-8"	2@18'-0"	1"	1'-4"	1'-8"	2'-0"	2'-4"	2'-8"	3'-2"	
37		4x3/8x20-0	4x3/8x17-0	7'-2"	7'-0"	3				6'-1"	5'-11"	4		9'-6"	11'-8"	2@13'-6"	1"	1'-4"	1'-8"	2'-0"	2'-4"	2'-8"	3'-2"	
38		5x3/8x22-0	4x3/8x18-0	7'-2"	7'-4"	3				6'-1"	6'-2"	4		5'-8"	7'-8"	2@19'-0"	1"	1'-4"	1'-8"	2'-0"	2'-4"	2'-8"	3'-2"	
39		6x3/8x23-0	5x3/8x19-0	7'-8"	7'-4"	3				5'-7"	5'-4"	5		4'-6"	7'-8"	2@13'-6"	1"	1'-4"	1'-8"	2'-0"	2'-4"	2'-8"	3'-2"	
40		8x3/8x25-0	6x3/8x21-6	7'-8"	7'-8"	3				5'-8"	5'-6"	5		4'-6"	7'-8"	2@20'-0"	1"	1'-4"	1'-8"	2'-0"	2'-4"	2'-8"	3'-2"	
41	21WF55	7x3/8x27-0	7x3/8x23-0	7'-8"	8'-0"	3				5'-9"	5'-8"	5	2'-2"	9'-6"	1"	3@13'-8"	1"	1'-4"	1'-8"	2'-0"	2'-4"	2'-8"	3'-2"	
42	21WF62	6x3/8x23-5	5x3/8x21-0	8'-2"	8'-0"	3	24WF68	4x3/8x18-0	5'-0"	5'-0"	5	2'-3"	9'-6"	1"	3@14'-0"	3'-8"	3'-6"	4'-0"	4'-4"	4'-8"	5'-2"	5'-6"		
43		6x3/8x27-0	5x3/8x22-0	8'-2"	8'-4"	3				5'-11"	6'-0"	5		1'-6"	1'-6"	3@14'-4"	1"	1'-4"	1'-8"	2'-0"	2'-4"	2'-8"	3'-2"	
44		7x3/8x28-5	6x3/8x24-0	8'-5"	8'-6"	3				4x3/8x19-0	6'-2"	6'-1"		1'-6"	1'-6"	3@14'-8"	1"	1'-4"	1'-8"	2'-0"	2'-4"	2'-8"	3'-2"	
45	21WF62	7x3/8x29-0	7x3/8x26-0	7'-6"	7'-1"	4	24WF68	5x3/8x22-0	5'-5"	5'-5"	6	2'-3"	1'-6"	1'-6"	3@15'-0"	1"	1'-4"	1'-8"	2'-0"	2'-4"	2'-8"	3'-2"		
46	24WF68	6x3/8x26-0	5x3/8x23-0	7'-6"	7'-4"	4				5'-8"	5'-7"	6	2'-5"	1'-6"	1'-6"	3@15'-4"	1"	1'-4"	1'-8"	2'-0"	2'-4"	2'-8"	3'-2"	
47	24WF68	6x3/8x28-0	6x3/8x25-0	7'-6"	7'-7"	4				5'-8"	5'-9"	6		1'-6"	1'-6"	3@15'-8"	1"	1'-4"	1'-8"	2'-0"	2'-4"	2'-8"	3'-2"	
48	24WF68	6x3/8x30-0	6x3/8x26-0	7'-8"	7'-9"	4				5'-11"	5'-10"	6		1"	1'-6"	3@16'-0"	1"	1'-4"	1'-8"	2'-0"	2'-4"	2'-8"	3'-2"	
49	24WF76	6x3/8x27-5	5x3/8x24-0	7'-8"	8'-0"	4	21WF64	4x3/8x18-0	5'-11"	5'-10"	6		1"	1'-6"	3@16'-4"	1"	1'-4"	1'-8"	2'-0"	2'-4"	2'-8"	3'-2"		
50		7x3/8x29-0	6x3/8x26-0	7'-10"	8'-2"	4				4x3/8x20-0	5'-11"	6'-2"	6		1'-6"	1'-6"	3@16'-8"	1"	1'-4"	1'-8"	2'-0"	2'-4"	2'-8"	3'-2"
51		7x3/8x31-0	7x3/8x28-0	8'-0"	8'-4"	4				4x3/8x20-0	6'-2"	6'-5"	6		1'-6"	1'-6"	3@17'-0"	1"	1'-4"	1'-8"	2'-0"	2'-4"	2'-8"	3'-2"
52		7x3/8x33-0	7x3/8x30-0	8'-2"	8'-6"	4				5x3/8x22-0	5'-11"	5'-8"	7		1'-6"	1'-6"	3@17'-4"	1"	1'-4"	1'-8"	2'-0"	2'-4"	2'-8"	3'-2"
53		7x3/8x33-0	7x3/8x31-0	7'-4"	7'-4"	5				6x3/8x24-0	5'-8"	5'-9"	7		1'-6"	1'-6"	3@17'-8"	1"	1'-4"	1'-8"	2'-0"	2'-4"	2'-8"	3'-2"
54	24WF76	8x3/8x36-0	7x3/8x32-0	7'-5"	7'-6"	5	21WF64	6x3/8x26-0	6'-0"	5'-10"	7	2'-5"	1'-6"	1'-6"	3@18'-0"	1"	1'-4"	1'-8"	2'-0"	2'-4"	2'-8"	3'-2"		
55	21WF64	7x3/8x30-0	7x3/8x28-2	7'-6"	7'-8"	5	30WF99	4x3/8x20-0	5'-11"	6'-0"	7	2'-8"	1'-6"	1'-6"	3@18'-4"	1"	1'-4"	1'-8"	2'-0"	2'-4"	2'-8"	3'-2"		
56		7x3/8x32-1	7x3/8x29-0	7'-7"	7'-11"	5	30WF99	4x3/8x22-0	5'-10"	6'-2"	7		1'-6"	1'-6"	3@18'-8"	1"	1'-4"	1'-8"	2'-0"	2'-4"	2'-8"	3'-2"		
57		7x3/8x34-0	7x3/8x31-0	7'-8"	8'-0"	5	30WF99	4x3/8x24-0	6'-0"	6'-3"	7		1'-6"	1'-6"	3@19'-0"	1"	1'-4"	1'-8"	2'-0"	2'-4"	2'-8"	3'-2"		
58		8x3/8x36-0	7x3/8x33-0	7'-9"	8'-2"	5	30WF99	4x3/8x25-0	5'-9"	5'-8"	8		1'-6"	1'-6"	3@19'-4"	1"	1'-4"	1'-8"	2'-0"	2'-4"	2'-8"	3'-2"		
59	21WF64	8x3/8x38-0	8x3/8x35-0	7'-10"	8'-4"	5	30WF5	4x3/8x25-0	5'-11"	5'-3"	8		1'-6"	1'-6"	3@19'-8"	1"	1'-4"	1'-8"	2'-0"	2'-4"	2'-8"	3'-2"		
60	21WF64	8x3/8x40-0	8x3/8x37-0	7'-11"	8'-6"	5	30WF5	4x3/8x27-0	5'-11"	5'-4"	8	2'-8"	1'-6"	1'-6"	3@20'-0"	1"	1'-4"	1'-8"	2'-0"	2'-4"	2'-8"	3'-2"		
65	30WF99	8x3/8x40-0	8x3/8x38-0	7'-8"	8'-0"	6	33WF118	4x3/8x25-0	5'-8"	5'-10"	9	2'-11"	1'-6"	1'-6"	3@20'-4"	1"	1'-4"	1'-8"	2'-0"	2'-4"	2'-8"	3'-2"		
70	30WF108	9x3/8x48-0	9x3/8x42-0	7'-11"	8'-5"	6	33WF118	4x3/8x27-0	5'-8"	5'-8"	10	2'-11"	1'-6"	1'-6"	3@20'-8"	1"	1'-4"	1'-8"	2'-0"	2'-4"	2'-8"	3'-2"		
75	33WF118	9x3/8x48-0	9x3/8x44-0	7'-8"	8'-3"	7	36WF155	5x3/8x34-0	6'-1"	6'-2"	10	3'-2"	2"	2"	3@21'-0"	1"	1'-4"	1'-8"	2'-0"	2'-4"	2'-8"	3'-2"		
80	36WF135	9x3/8x43-0	9x3/8x39-0	8'-3"	8'-10"	7				5'-5"	6'-1"	11		2"	2"	3@21'-4"	1"	1'-4"	1'-8"	2'-0"	2'-4"	2'-8"	3'-2"	
85	36WF135	11x3/8x52-0	11x3/8x48-0	8'-0"	8'-5"	8				5'-11"	6'-0"	12	3'-5"	2"	2"	3@21'-8"	1"	1'-4"	1'-8"	2'-0"	2'-4"	2'-8"	3'-2"	
90	36WF150	10x3/8x55-0	11x3/8x50-0	8'-6"	8'-11"	8				5'-11"	5'-11"	13	3'-5"	2"	2"	3@22'-0"	1"	1'-4"	1'-8"	2'-0"	2'-4"	2'-8"	3'-2"	