



Bridge #B5985(Routine)

SH440 NB over I-40 over I 40 SEC 33 Log 158.94

Location: JCT SH440 AND I40 (I-6)

Team Lead: Chris Doggett Inspection Date: July 29, 2019



Latitude:34.78072, Longitude:-92.16141

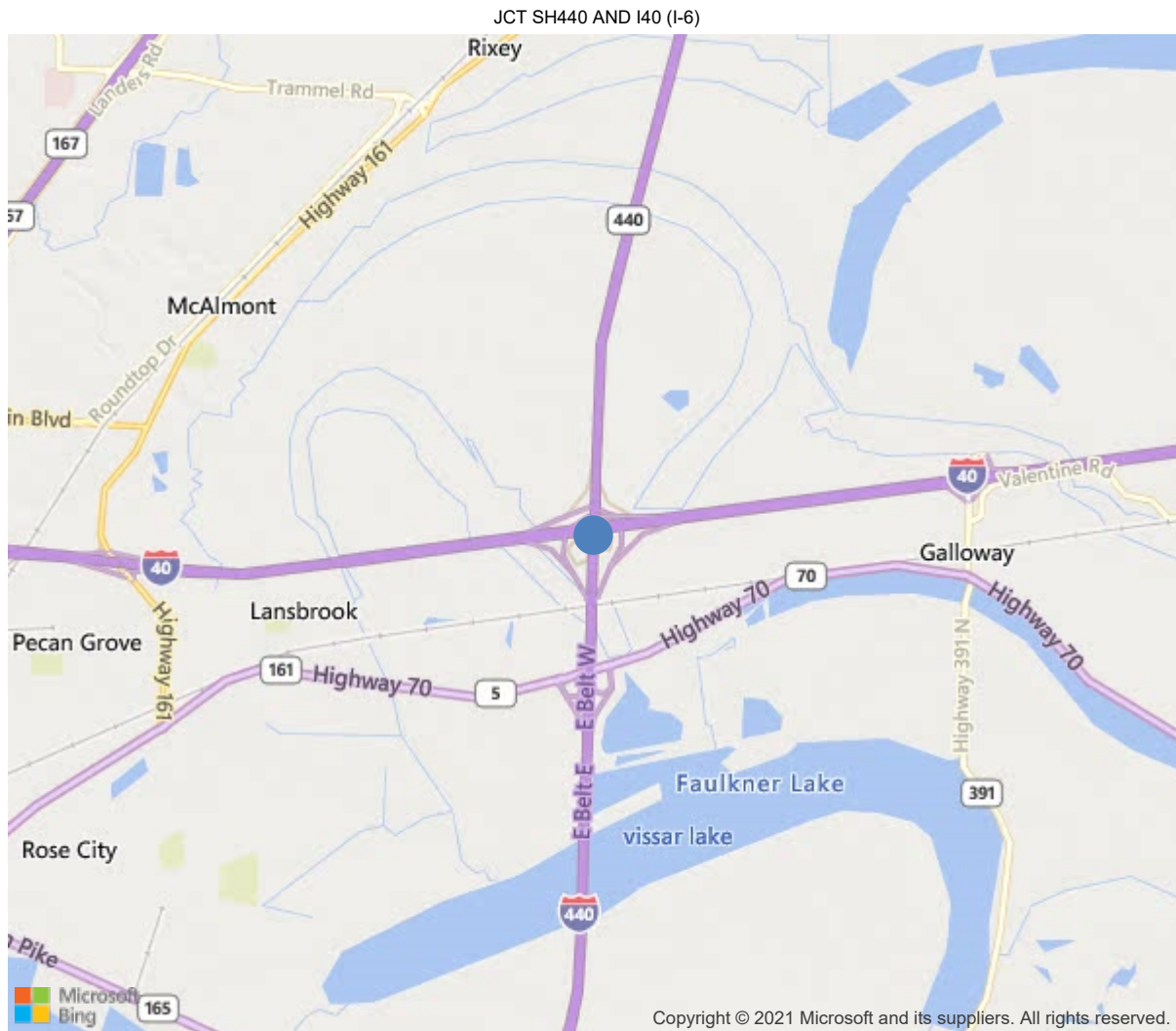
Route:440 Section:02 Log:10.36

Arnold Road ID:60x440x2xA, Arnold Log mile:10.384

District 06, Pulaski County

Owner: 1-State Highway Agency

Place Code: 47940 - NORTH LITTLE ROCK



34.78072, -92.16141



Bridge #B5985(Routine)

SH440 NB over I-40 over I 40 SEC 33 Log 158.94

Location: JCT SH440 AND I40 (I-6)

Team Lead: Chris Doggett Inspection Date: July 29, 2019

IDENTIFICATION	
(1) State Names	Arkansas
(8) Structure Number	B5985
(5) Inventory Route	440
(2) Highway Agency District	06
(3) County Code	119-Pulaski County, Arkansas
(4) Place Code	47940
(6) Features Intersected	I 40 SEC 33 Log 158.94
(7) Facility Carried	SH440 NB over I-40
(9) Location	JCT SH440 AND I40 (I-6)
(11) Mile Point	10.36 mi
(12) Base Highway Network	Yes
(13) LRS Inventory Rte & Subrte	0000440020
(16) Latitude	34.78072
(17) Longitude	-92.16141
(98) Border Bridge State Code	
(99) Border Bridge Structure No.	
STRUCTURE TYPE AND MATERIAL	
(43) Main Structure Type	42
Material	4-Steel continuous
Type	2-Stringer/Multi-beam or girder
(44) Approach Structure Type	32
Material	3-Steel
Type	2-Stringer/Multi-beam or girder
(45) No. of Spans in Main Unit	9
(46) No. of Approach Spans	5
(107) Deck Structure Type	1-Concrete Cast-in-Place
(108) Wearing Surface/Protective System	
Type of Wearing Surface	1-Monolithic Concrete (concurrently placed
Type of Membrane	0-None
Type of Deck Protection	0-None
AGE AND SERVICE	
(27) Year Built	1986
(106) Year Reconstructed	0
(42) Type of Service	11
On	1-Highway
Under	1-Highway, with or without pedestrian
(28) Lane	
On	3
Under	8
(29) Average Daily Traffic	21000
(30) Year of ADT	2013
(109) Truck ADT	1 %
(19) Bypass, Detour Length	1 mi
GEOMETRIC DATA	
(48) Length of Maximum Span	87 ft
(49) Structure Length	888 ft
(50) Curb or Sidewalk Width	
Left	0 ft
Right	0 ft
(51) Bridge Roadway Width Curb to Curb	51.8 ft
(52) Deck Width Out to Out	54.8 ft
(32) Approach Roadway Width (W/Shoulders)	51.8 ft
(33) Bridge Median	0-No median
(34) Skew	9 Deg
(35) Structure Flared	No flare
(10) Inventory Route Min Vert Clear	99.99 ft
(47) Inventory Route Total Horiz Clear	53.5 ft
(53) Min Vert Clear Over Bridge Rdwy	99.99 ft
(54) Min Vert Underclear	17.17 ft
Ref:	
(55) Min Lat Underclear RT	29.5 ft
Ref:	
(56) Min Lat Underclear LT	28 ft
NAVIGATION DATA	
(38) Navigation Control	N-Not applicable, no waterway.
(111) Pier Protection	1-Navigation protection not requ
(39) Navigation Vertical Clearance	0 ft
(116) Vert-Lift Bridge Nav Min Vert Clear	0 ft
(40) Navigation Horizontal Clearance	0 ft

CLASSIFICATION	
(112) NBIS Bridge Length	Y
(104) Highway System	1
(26) Functional Class	12-Urban Principal Arterial - Oth
(100) Defense Highway	0-The inventory route is not a S
(101) Parallel Structure	R-The right structure of paralle
(102) Direction of Traffic	1 - way traffic
(103) Temporary Structure	
(105) Federal Lands Highways	0-N/A
(110) Designated National Network	1-The inventory route is part of the
(20) Toll	3-On free road. The structure is toll-
(21) Maintain	1-State Highway Agency
(22) Owner	1-State Highway Agency
(37) Historical Significance	5-Bridge is not eligible for the NRHP
CONDITION	
(58) Deck	7
(59) Superstructure	7
(60) Substructure	7
(61) Channel & Channel Protection	N
(62) Culverts	N
LOAD RATING AND POSTING	
(31) Design Load	5-MS 18 / HS 20
(63) Operating Rating Method	1
(64) Operating Rating	
Type	1-Load Factor(LF)
Rating	60
(65) Inventory Rating Method	1-Load Factor(LF)
(66) Inventory Rating	
Type	9
Rating	36
(70) Bridge Posting	5-Equal to or above legal loads
(41) Structure Open/Posted/Closed	A-Open, no restriction
APPRAISAL	
(67) Structural Evaluation	7
(68) Deck Geometry	5
(69) Clearances, Vertical/Horizontal	7
(71) Waterway Adequacy	N
(72) Approach Roadway Alignment	8
(36A) Bridge Railings	1-Inspected feature meets currently a
(36B) Transitions	1-Inspected feature meets currently a
(36C) Approach Guardrail	1-Inspected feature meets currently a
(36D) Approach Guardrail Ends	1-Inspected feature meets currently a
(113) Scour Critical Bridges	N-Bridge not over waterway.
PROPOSED IMPROVEMENTS	
(75) Type of Work	
(76) Length of Structure Improvement	0 ft
(94) Bridge Improvement Cost	\$ 0
(95) Roadway Improvement Cost	\$ 0
(96) Total Project Cost	\$ 0
(97) Year of Improvement Cost Estimate	
(114) Future ADT	15554
(115) Year of Future ADT	2028

INSPECTIONS *			
(90) Inspection Date			07/2019
(91) Frequency			24 Months
(92) Critical Feature Inspection	Done	Freq. (Mon)	Date
A: Fracture Critical Detail	No		
B: Underwater Inspection	No		
C: Other Special Inspection	No		
* The inspection date and frequency information in this box contains the current NBI date and frequency information. Please refer to the report header for the date this inspection was conducted.			



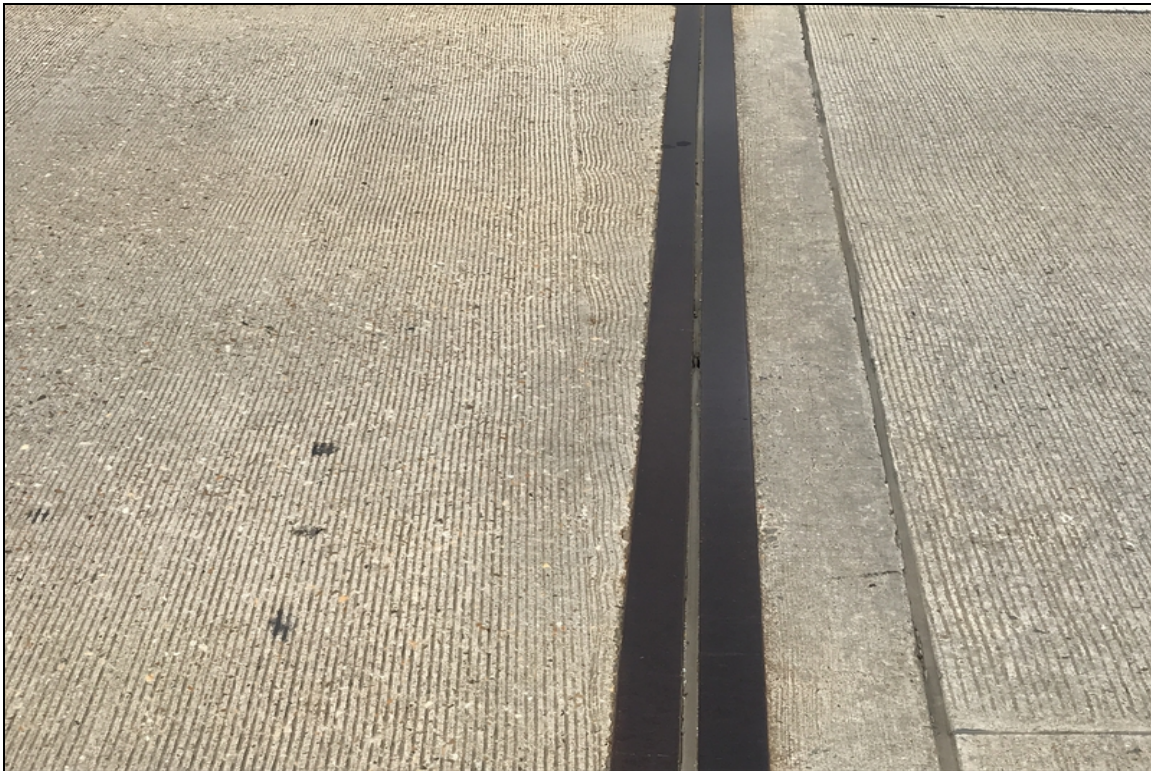
Bridge #B5985(Routine)

SH440 NB over I-40 over I 40 SEC 33 Log 158.94

Location: JCT SH440 AND I40 (I-6)

Team Lead: Chris Doggett, Inspection Date: July 29, 2019

ELEM	DESCRIPTION	UNITS	TOTAL	CS1	CS2	CS3	CS4
12	Reinforced Concrete Deck	SF	48630	47415	1215	0	0
1130	Cracking (RC and Other)	SF	1215	0	1215	0	0
(12)	Widely scattered transverse cracks in all spans. 0.030 inch avg.						
107	Steel Open Girder/Beam	LF	6202	6158	42	2	0
1000	Corrosion	LF	42	0	42	0	0
1020	Connection	LF	2	0	0	2	0
515	Steel Protective Coating	SF	52998	0	52628	0	370
3440	Effectiveness (Steel Protective Coatings)	SF	52998	0	52628	0	370
(107)	Active rust with minor pitting to the beam ends at bent 2,6,7,8,9, & 14 due leaking joint seals. Span 4, girder 2 at the splice: 1 missing bolt on the bottom flange. Span 8, girder 2, 1st diaphragm: all bolts are loose with no nuts connected						
205	Reinforced Concrete Column	EA	36	36	0	0	0
215	Reinforced Concrete Abutment	LF	110	104	6	0	0
1130	Cracking (RC and Other)	LF	6	0	6	0	0
(215)	Bent 14 scattered cracks						
234	Reinforced Concrete Pier Cap	LF	624	624	0	0	0
301	Pourable Joint Seal	LF	493	450	0	43	0
2310	Leakage	LF	43	0	0	43	0
(301)	All joint seals have areas crack and splits.						
310	Elastomeric Bearing	EA	105	105	0	0	0
311	Movable Bearing	EA	21	21	0	0	0
313	Fixed Bearing	EA	21	21	0	0	0
321	Reinforced Concrete Approach Slab	SF	2628	2628	0	0	0
331	Reinforced Concrete Bridge Railing	LF	1776	1154	622	0	0
1130	Cracking (RC and Other)	LF	622	0	622	0	0



Bent 14: joint seal has a few holes allowing water to flow through.



Span 8, girder 2, 1st diaphragm: all bolts are loose with no nuts connected



Deck view



Bridge #B5985(Routine)

SH440 NB over I-40 over I 40 SEC 33 Log 158.94

Location: JCT SH440 AND I40 (I-6)

Team Lead: Chris Doggett Inspection Date: July 29, 2019

Inspection Comments

AHTD Job 60184, 25683 and R60015.

Logged East bound.