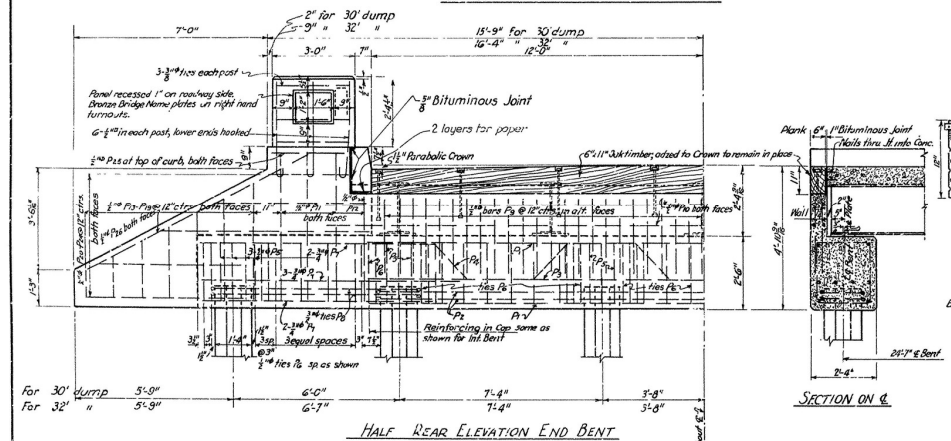
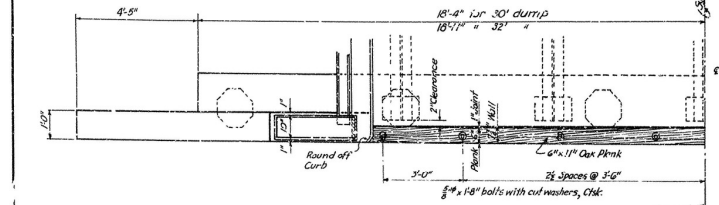
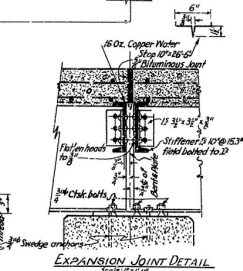
E L E V A T I O N

HALF REAR ELEVATION END BENT



HALF PLAN OF END BENT



EXPANSION JOINT DETAIL

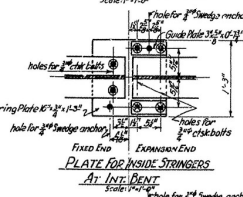
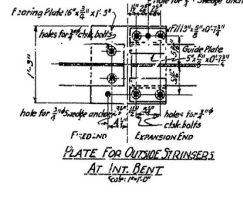
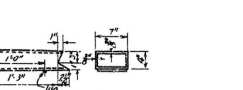


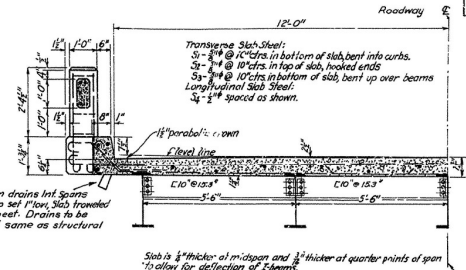
PLATE FOR INSIDE STRINGERS
A2: INT BENT



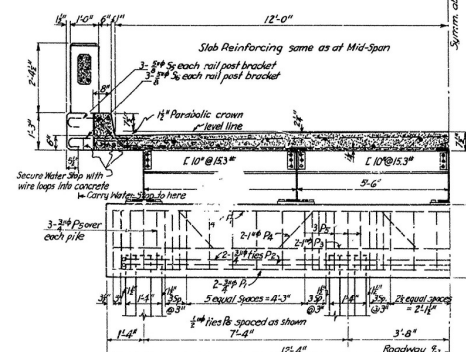
AT INT. BENT



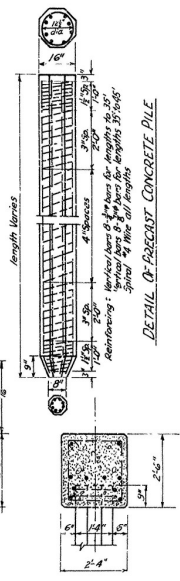
DETAIL OF CAST IRON DRAIN
Scale: 1" = 10"



HALF SECTION AT MID-SPAN



HALF SECTION AT INT. BENT



DETAIL OF PRECAST CONCRETE PILE

LIST OF BENT BARS							
Mark	Size	Length	a	b	c	d	e
P ₁	$\frac{3}{8}$ "	5'-3"	2'-6"	1'-5"			
P ₂	$\frac{3}{8}$ "	19'-3" 20'-5"	7'-6" 8'-1"	1'-5" 1'-5"	for 32' dump for 32' dump		
P ₃	1"	27'-2"	2'-4"	2'-6"	2'-4"	1'-3"	1'-9"
P ₄	$\frac{3}{8}$ "	6'-1"	1'-11"	2'-11"			
P ₅	$\frac{3}{8}$ "	8'-9"	1'-11"	2'-1"	8"		
P ₆	1"	26'-9"	2'-1"	2'-9"	2'-7"	5'-5"	5'-5"
S ₁	$\frac{5}{8}$ "	25'-0"	3'-0"				
S ₂	3"	26'-9"	2'-1"	1'-3 1/2"	3'-1"		
S ₃	$\frac{3}{4}$ "	4'-1"	1'-6"	5'-1"	1'-0"	4'-1"	
S ₄	$\frac{5}{8}$ "	3'-6"	3'-0"	4"			

GENERAL NOTES:

All concrete to Class "S". All exposed corners to have $\frac{3}{8}$ " chamfer unless otherwise shown.

Reinforcing steel to be lap welded. All lap joints to be submitted and approved before fabrication a begun.

Reinforcing shown "X" or "Z" or "S" or "M" is to be lap welded. Lap joints to be submitted and approved before fabrication a begun.

Volume occupied by deck member panels is included in volume of concrete.

Reinforcing Bars: #1 Open hole; #2 - bolts for structural steel field connections.

Reinforcing Bars: #1 Structural Steel shall be one coat of Red lead and Valspar (or better) after shipment.

Field Paint: 25 coat of Valspar with Lamp black.

Welded Aluminum paint.

This drawing shows general features of design only. Shop drawings shall be made in compliance with specifications and be approved before fabrication.

Dimensions shown are taken from American Standard Road and Bridge Specifications adopted May 30th, 1925 and Revised.

**DETAILS OF STANDARD
25'-0" I-BEAM SPAN
CONCRETE DECK, CONCRETE PILE BENTS
24'-0" CLEAR ROADWAY**

ARKANSAS STATE HIGHWAY COMMISSION
LITTLE ROCK, ARK.

Drawn By: MWK Date: 8-2-34 Scale: $\left\{ \begin{array}{l} \frac{1}{2} \text{ in.} = 1 \text{ ft.} \\ \text{Unless Noted} \end{array} \right.$
 Traced By: MWK Date: 3-2-39
 Checked By: _____ Date: _____
BRIDGE No. _____ **DRAWING No.** 2158

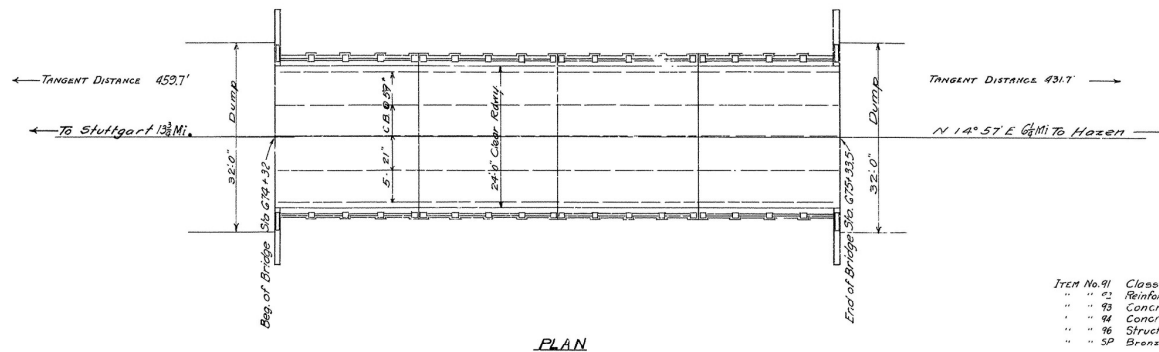
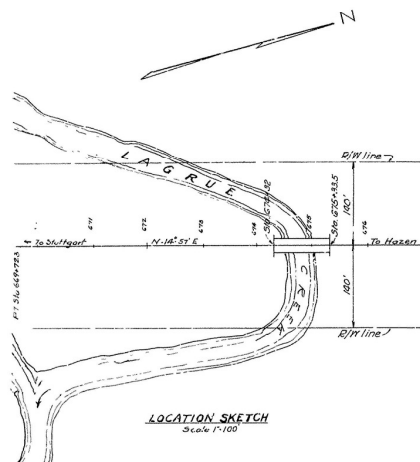
Revised 6-20-34
C. Struts by J.M.B.

N.B. Garver
MECHANICAL ENGINEER

Drawn By: MWK Date: 8-2-34 Scale: $\left\{ \begin{array}{l} \frac{1}{2} \text{ in.} = 1 \text{ ft.} \\ \text{Unless Noted} \end{array} \right.$
 Traced By: MWK Date: 3-2-39
 Checked By: _____ Date: _____
BRIDGE No. _____ **DRAWING No.** 2158

FISCAL YEAR	STATE	FEDERAL DISTRICT	PROJECT NO.	SHEET NO.	TOTAL SHEETS
1934	ARK.	6	1584	4	7

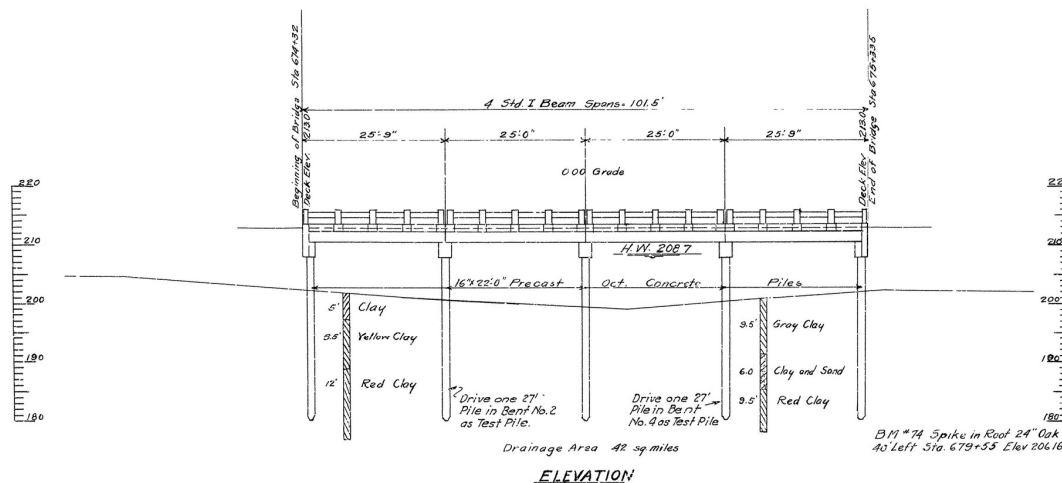
State Job No. G144



QUANTITIES

Item No. 91	Class "S" Concrete for Bridges	37.50	Cu Yds
" " 92	Reinforcing Steel for Bridges	19,564	Lbs
" " 93	Concrete Piling	538	Lin Ft.
" " 94	Concrete Paving for Bridges	211.33	Lin Ft.
" " 95	Structural Steel in Beam Spans	34,348	Lbs.
" " 96	Brass State Bridge Name Plates	2	Each

GENERAL NOTES: Lengths of piling shown were assumed for estimating quantities only. Actual lengths are to be determined in field. For details of Bridge No. 1860 See Drawing No. 2155.
Specifications: Arkansas Standard Road and Bridge Specifications Adopted May 30, 1925 and Revised



B.M. #73 Spike in Roof 6" Oak
90 Left Sta 671+45 Elev 203.65

B.M. #74 Spike in Roof 24" Oak
40 Left Sta 679+33 Elev 206.16

LAYOUT OF
BRIDGE AT STA 674+32
HAZEN-ARK COUNTY LINE ROAD
PRAIRIE COUNTY
ROUTE 11 SEC. 8

ARKANSAS STATE HIGHWAY COMMISSION
LITTLE ROCK, ARK.

Drawn By: E.E.C. Date: 2-12-34
Traced By: K.E.T. Date: 2-16-34
Checked By: _____ Date: _____
Scale: 1 in = 10 ft.

BRIDGE No. 1860 DRAWING No. 3677

M.B. Harris
BRIDGE ENGINEER