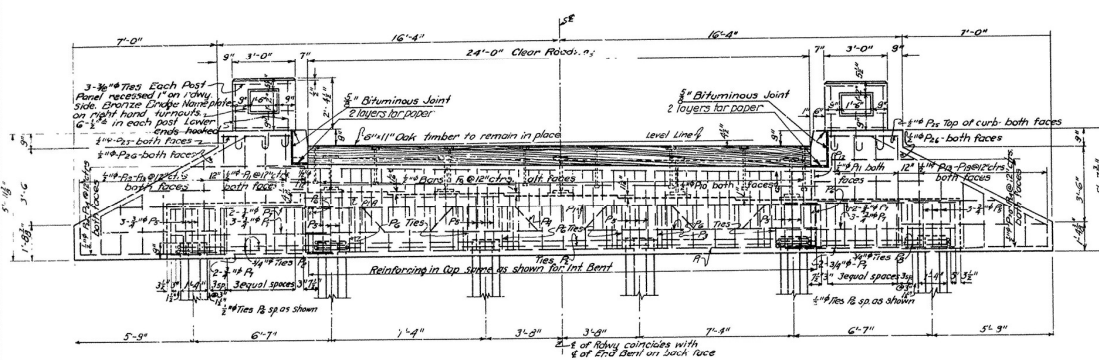
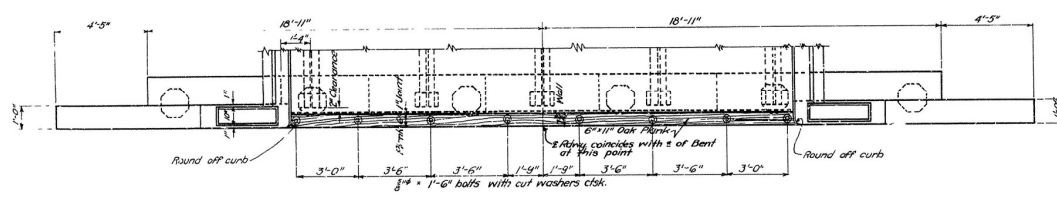


FISCAL YEAR	STATE	DISTRICT	PROJECT NUMBER	SHEET NUMBER	TOTAL SHEETS
1934	ARK.	6	1859	6	7

State Job No. G144

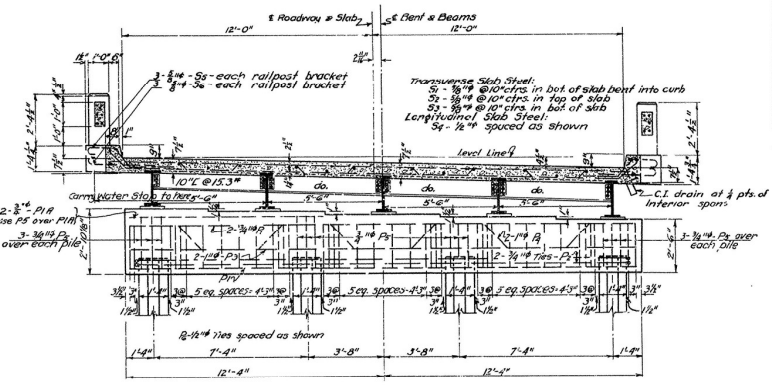


REAR ELEVATION END BENT

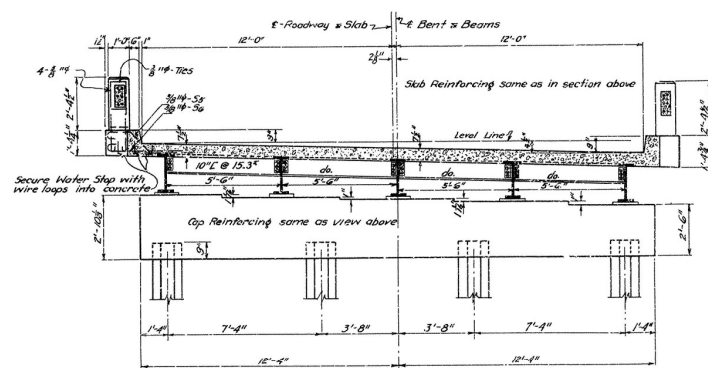


PLAN OF END BENT

NOTE:
For details of handrailing, drains, piling, bearing plates,
beams, bending diagrams and other details, see
standard plan for 23'-0" span, drawing no. 3745.



SEC. AT BENT #3



SEC. AT BENTS #2 & #4

DETAILS OF BEAM SPANS FOR
BRIDGE AT STATION 664 + 50
HAZEN-ARKANSAS COUNTY LINE ROAD
PRAIRIE COUNTY
ROUTE 66

ARKANSAS STATE HIGHWAY COMMISSION
LITTLE ROCK, ARK.

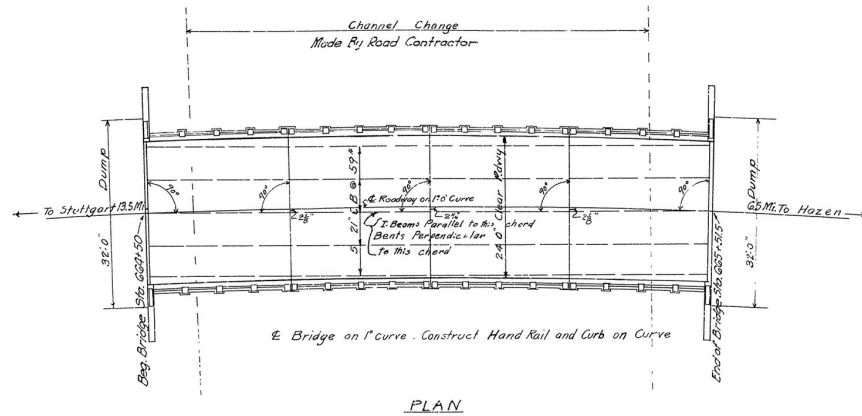
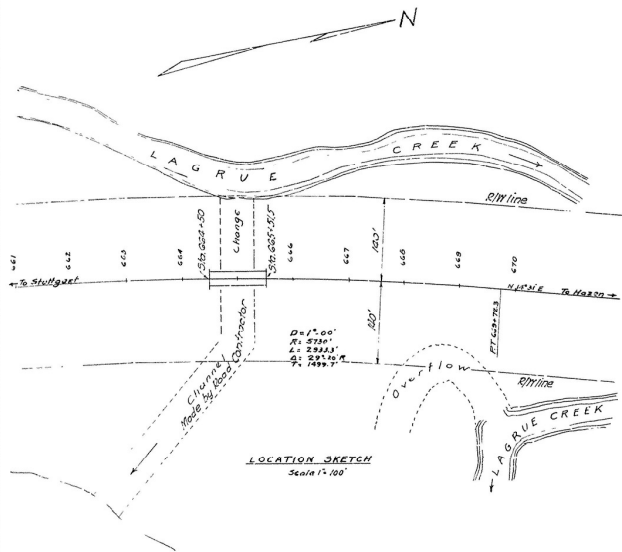
Revised 2/12/34 by J. B. G. for
of Bent at Station 664+50

Drawn By: M. H. G. Date: 2-12-34
Traced By: M. H. G. Date: 3-12-34
Checked By: Date:
Bridge No. 1859. DRAWING No. 3712.

J. B. G.
BRIDGE ENGINEER

FISCAL YEAR	STATE	PROJECT NO.	SHEET NO.	TOTAL SHEETS
1934	ARK	10	37	7

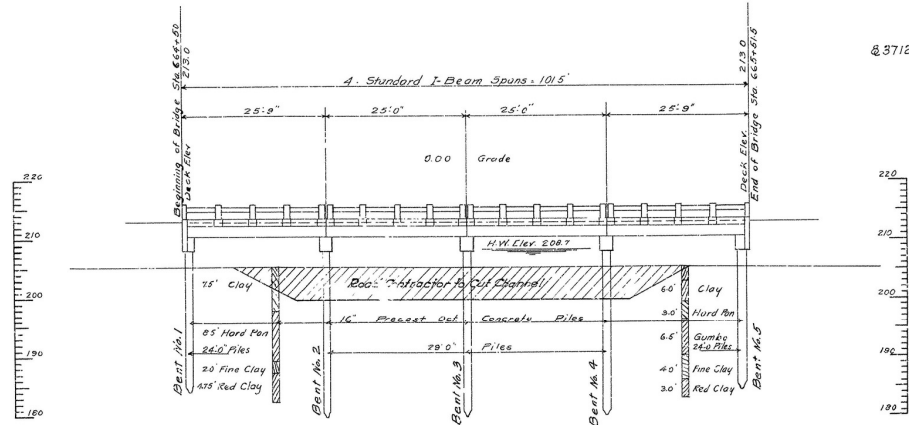
State Job No. G144



QUANTITIES

Item No. 91	Class 5 Concrete for Bridges	106.60	Cu Yds.
" " 92	Reinforcing Steel for Bridges	19,564	Lbs.
" " 93	Concrete Piling	636	Lin. Ft.
" " 94	Concrete Railing for Bridges	211.33	Lin. Ft.
" " 96	Structural Steel in Beam Spans	31,340	Lbs.
" " 97	Bronze State Bridge Name Plates	2	Each

General Notes: Lengths of piling shown were assumed for estimating quantities; only actual lengths are to be determined in field. For details of Bridge No. 1859 See Dwg. No. 2158 & 3712. Specifications: Arkansas Standard Road and Bridge Specifications adopted May 30, 1925 and Revised



BM #72 Spike in Roof 10 Persimmon Stamp
20' Left Sta. 663+25 Elev. 204.61

Drainage Area 42 sq miles

LAYOUT OF
BRIDGE AT STA. 664+50
HAZEN-ARK COUNTY LINE ROAD
PRAIRIE COUNTY
ROUTE 11 SEC. 8
ARKANSAS STATE HIGHWAY COMMISSION
LITTLE ROCK, ARK
Drawn By: EGI Date: 2-26-34
Traced By: EGI Date: 2-26-34
Checked By: Date: _____
Scale 1 in. = 10 ft.
BRIDGE No. 1859 DRAWING No. 3676

Drawn By: EGI
Traced By: EGI
Checked By: _____
Date: 2-26-34
Date: 2-26-34
Date: _____
Scale 1 in. = 10 ft.
BRIDGE No. 1859 DRAWING No. 3676