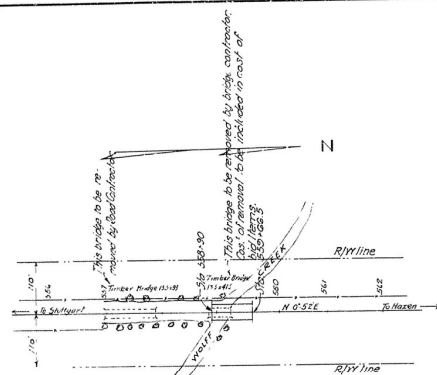


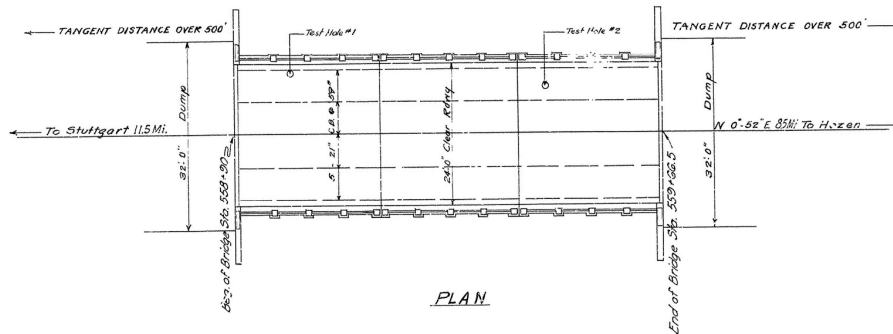
YEAR	STATE	FEDERAL DISTRICT	PROJECT NO.	SHEET NO.	TOTAL SHEETS
1934	ARK.	6	1858	2	7

State Job No. 6144



LOCATION SKETCH

Scale 1" = 100'



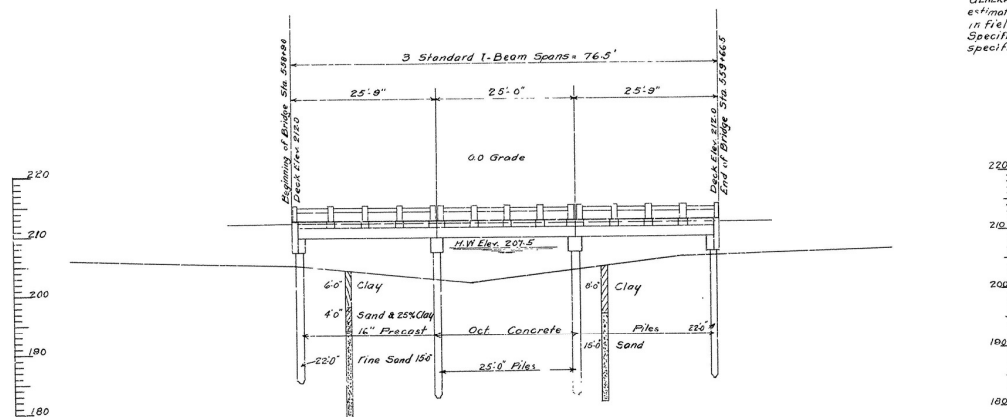
PLAN

QUANTITIES

Item No. 91	Class 'S' Concrete for Bridges	7896	Cu Yds.
" 92	Reinforcing Steel for Bridges	15,282	Lbs.
" 93	Concrete Piling	464	Lin. Ft.
" 94	Concrete Railing for Bridges	161.34	Lin. Ft.
" 96	Structural Steel in Beam Spans	26,100	Lbs.
" 5P	Bronze Site Bridge Name Plates	2	Each

Old timber bridge Sta. 558+85.5 to Sta. 559+27, to be removed by bridge contractor. Cost of removal to be included in cost of the above bid items.

GENERAL NOTES: Lengths of piling shown were assumed for estimating quantities only. Actual lengths are to be determined in field. For details of Bridge No. 1858, see Drawg. No. 2153. Specifications: Arkansas Standard Road and Bridge Specifications adopted May 30, 1925 and Revised.



ELEVATION

B.M. #62 Spike in Forked Elm  
80' Left Sta. 557+75 Elev 206.36

Drainage Area = 13 Sq. Miles

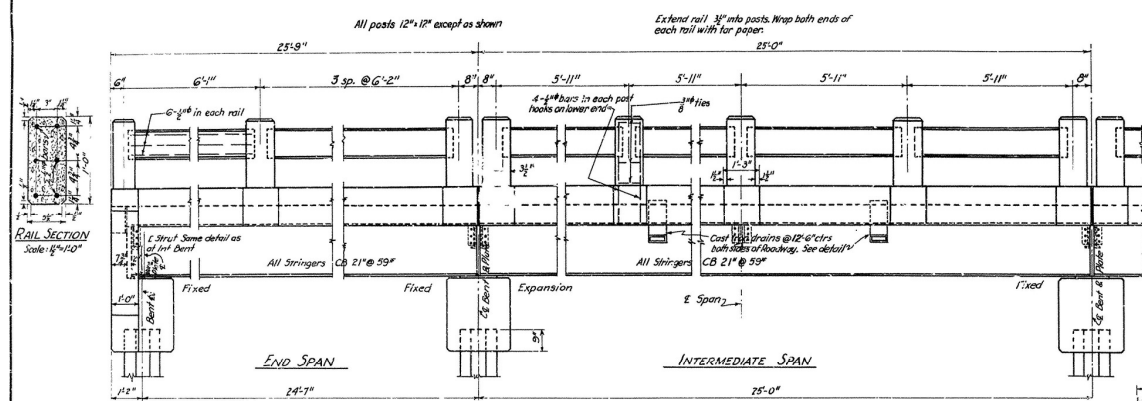
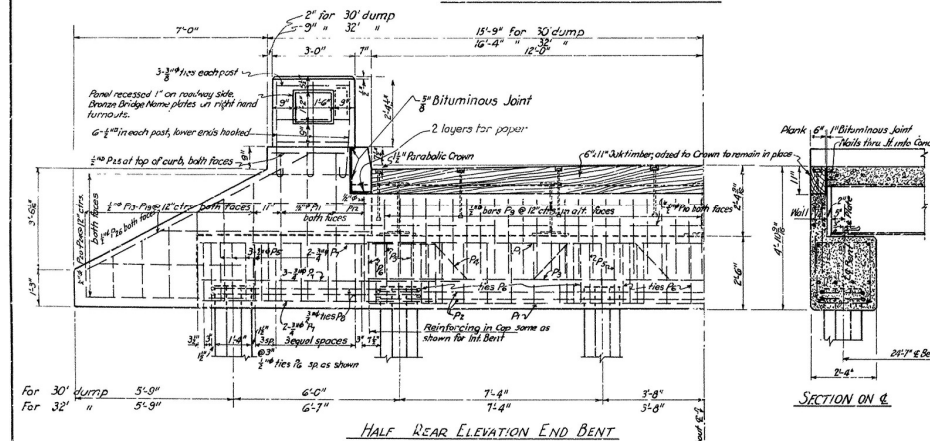
LAYOUT OF  
BRIDGE AT STA. 558+90  
HAZEN-ARK COUNTYLINE ROAD  
PRAIRIE COUNTY  
ROUTE 11 SEC. 8

ARKANSAS STATE HIGHWAY COMMISSION  
LITTLE ROCK, ARK.

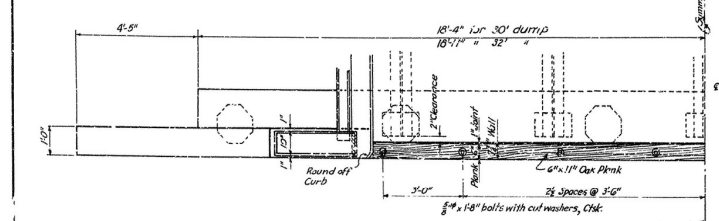
Drawn By: E.G.T. Date: 2/16/34  
Traced By: E.G.T. Date: 2/16/34  
Checked By: Date: \_\_\_\_\_  
BRIDGE No. 1858 DRAWING No. 3675

Scale: 1 in. = 10 ft.

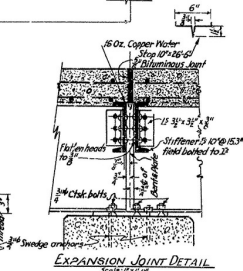
M. A. K. L. A. R.  
BRIDGE ENGINEER

E L E V A T I O N

HALF REAR ELEVATION END BENT



HALF PLAN OF END BENT



### EXPANSION JOINT DETAIL

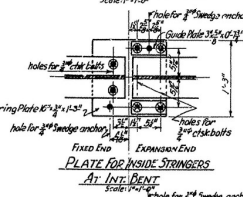


PLATE FOR INSIDE STRINGERS  
A2: INT BENT

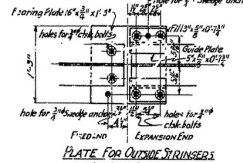
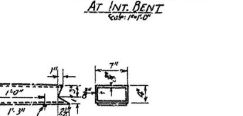
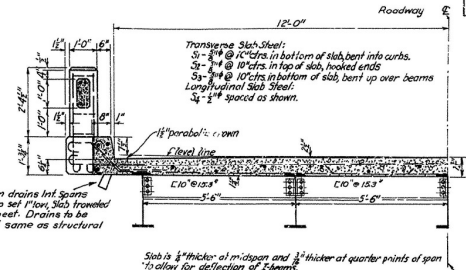


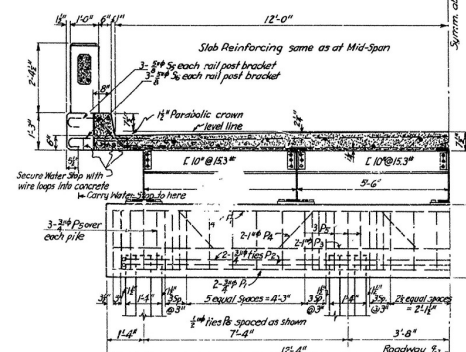
PLATE FOR OUTSIDE STRINGER:



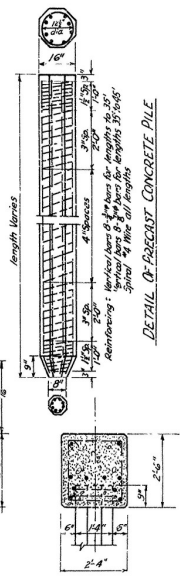
DETAIL OF CAST IRON DRAIN  
Scale: 1" = 1.0'



HALF SECTION AT MID-SPAN



HALF SECTION AT INT. BENT



DETAIL OF PRECAST CONCRETE PILE

LIST OF BENT BARS							
Mark	Size	Length	a	b	c	d	e
P <sub>1</sub>	$\frac{3}{8}$ "	5'-3"	2'-6"	1'-5"			
P <sub>2</sub>	$\frac{3}{4}$ "	19'-3" 20'-5"	7'-6" 8'-1"	1'-5" 1'-5"	for 32' dump for 32' dump		
P <sub>3</sub>	1"	27'-2"	2'-4"	2'-6"	2'-4"	1'-3"	1'-9"
P <sub>4</sub>	$\frac{3}{4}$ "	6'-1"	1'-11"	2'-11"			
P <sub>5</sub>	$\frac{1}{2}$ "	8'-9"	1'-11"	2'-1"	8"		
P <sub>6</sub>	1"	26'-9"	2'-1"	2'-9"	2'-7"	5'-5"	5'-5"
S <sub>1</sub>	$\frac{5}{8}$ "	25'-0"	3'-0"				
S <sub>2</sub>	3"	26'-9"	23'-7"	1'-3 1/2"	3'-1"		
S <sub>3</sub>	$\frac{3}{4}$ "	4'-1"	1'-6"	5'-1"	1'-0"	4'-8"	
S <sub>4</sub>	$\frac{5}{8}$ "	3'-6"	3'-0"	4"			

[illegible]

**DETAILS OF STANDARD  
25'-0" I-BEAM SPAN**  
CONCRETE DECK, CONCRETE PILE BENTS  
24'-0" CLEAR ROADWAY

ARKANSAS STATE HIGHWAY COMMISSION  
LITTLE ROCK, ARK.

Drawn By: MWK Date: 8-2-34 Scale:  $\left\{ \begin{array}{l} \frac{1}{2} \text{ in.} = 1 \text{ ft.} \\ \text{Unless Noted} \end{array} \right.$   
 Traced By: MWK Date: 3-2-39  
 Checked By: \_\_\_\_\_ Date: \_\_\_\_\_  
**BRIDGE No.** \_\_\_\_\_ **DRAWING No.** 2158

Revised 6-20-34  
C. Struts by J.M.B.

N.B. Garver  
MECHANICAL ENGINEER

Drawn By: MWK Date: 8-2-34 Scale:  $\left\{ \begin{array}{l} \frac{1}{2} \text{ in.} = 1 \text{ ft.} \\ \text{Unless Noted} \end{array} \right.$   
 Traced By: MWK Date: 3-2-39  
 Checked By: \_\_\_\_\_ Date: \_\_\_\_\_  
**BRIDGE No.** \_\_\_\_\_ **DRAWING No.** 2158