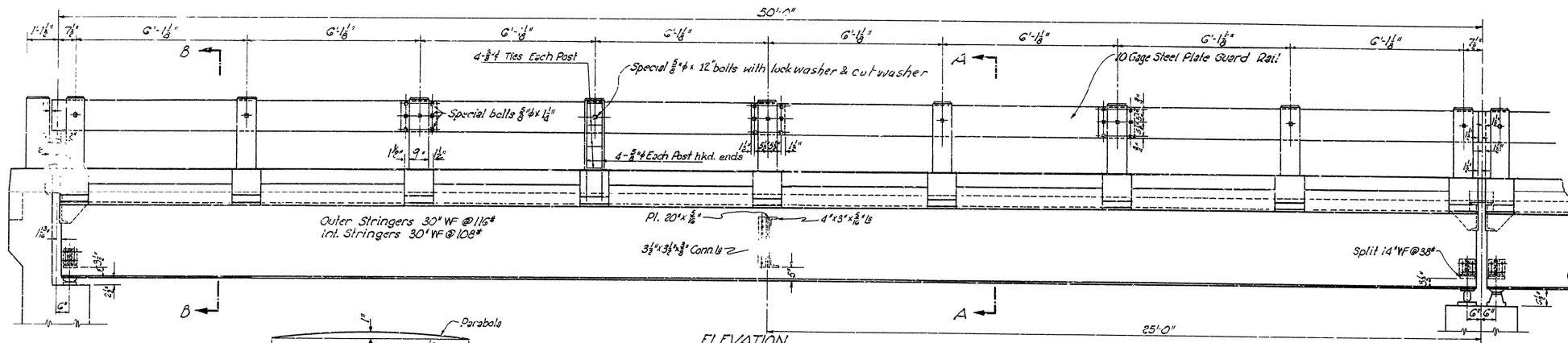


FED. ROAD DIST. NO.	STATE	PROJ. NO.	FISCAL YEAR	SHEET NO.	TOTAL SHEETS
6	ARK.			1	1
STATE JOB NO.					

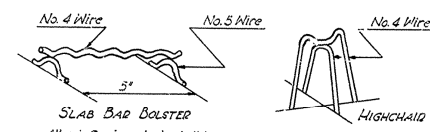
17



BEARING PLATES AT ABUTMENTS  
Scale: 1/4" = 1'-0"

**LOADING H-15**  
Load Distribution Outside Beams  
Dead Load Per Foot = 1000"  
Live Load Per Foot = 184"  
Conc. Live Load = { 5200 Mom.  
7500 Shear  
Truck Live Load = 82 Wheel  
Load Distribution Inside Beams  
Dead Load Per Foot = 700"  
Live Load Per Foot = 254"  
Conc. Live Load = { 7425 Mom.  
10,725 Shear  
Truck Live Load = 11 Wheel

**STRESSES**  
Structural Steel = 18,000 psi  
Reinforcing Steel = 18,000 psi  
Concrete = 1000 psi



All reinforcing steel shall be accurately located in the forms and firmly held in place by means of steel wire chair supports adequate to prevent displacement during the course of construction and to keep the steel a proper distance from the forms. Bar supports are to be sufficient in number and sufficiently heavy to properly carry the steel they support. Wire sizes shall not be less than shown. Wire supports will not be paid for directly but will be considered subsidiary to the item of "Reinforcing Steel". Snap lists and diagrams must be submitted for approval.

**GENERAL NOTES**

All concrete to be Class "S". All exposed corners to have 3/8" chamfer unless otherwise noted.  
Rivets 3/4". Open holes 1/2". Where bolts are indicated use machine bolts.

Structural shapes of equal or greater strength may be substituted for shapes shown but payment will be made on basis of shapes shown or those actually used whichever is the lesser.  
All welded connections to be 3/8" fillet shop welds except as noted.  
Shop Paint: All structural steel except surfaces in contact with concrete shall be given one coat of red lead and raw linseed oil before shipment.  
Field Paint: First, White Lead linked with Lamp Black. Second Coat, Aluminum.  
All bearing and roadway expansion devices to be paid for as "Structural Steel in Beam Spans."  
Weight of C.I. Drains to be included in weight of "Reinforcing Steel."  
Care shall be exercised to obtain 90° in the angle between flange and web of beams at bearing points.  
This drawing shows general features of design only. Shop drawings shall be made in accordance with the Specifications, submitted and approval secured before fabrication is begun.  
In order to secure a good riding surface it will be required that the floor slab be struck off from curb to curb with a half span length longitudinal strike-off. The strike-off shall be sufficiently stiff so as to have no appreciable vertical deflection.  
SPECIFICATIONS: Arkansas State Highway Commission Standard Specifications for Road and Bridge Construction, Adopted March 13, 1940.  
Bearings shall be finally sealed on 3 layers of bitum saturated with red lead. This work and material to be included in the unit price bid for "Structural Steel in Beam Spans."  
The steel plate guard rail shall be of the type shown or an equivalent rigid type as approved by the Engineer. The rail, including concrete posts, shall be paid for at the unit price bid per linear foot for "Steel Plate Guard Rail."

DETAILS OF  
STANDARD 50'-0" I-BEAM SPAN  
24'-0" CLEAR ROADWAY 1'-0" CURB

REVISED 7-2-48  
REVISED 7-30-48 Handrail  
REVISED 9-13-48 Handrail  
REVISED 4-25-50 Cap Screws in Lieu of Tap Bolts

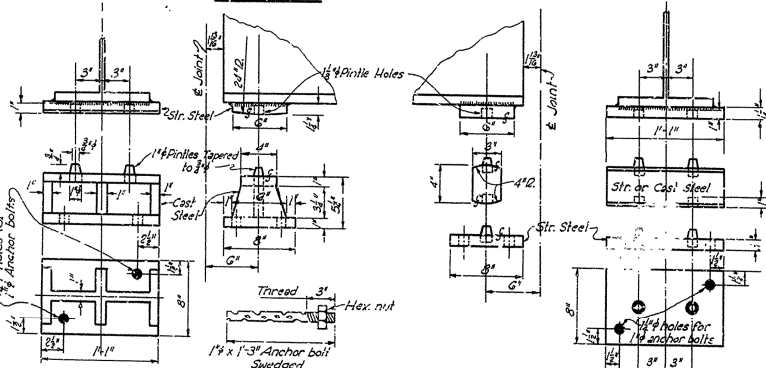
REVISED 6-30-50 Anchor Bolts  
REVISED 7-6-50 Angles at End Bars  
7-28-52 Rail Posts, Reinf. Bars and Anchor Rods

M. B. Brown  
PRINCIPAL HIGHWAY ENGINEER (BRIDGE)

ARKANSAS STATE HIGHWAY COMMISSION  
LITTLE ROCK, ARK.

Drawn By: L. A. M. S. Date: 8-28-47  
Traced By: F. E. S. Date: 9-20-47  
Checked By: \_\_\_\_\_ Date: \_\_\_\_\_  
BRIDGE NO. \_\_\_\_\_ DRAWING NO. 5193

**ELEVATION**

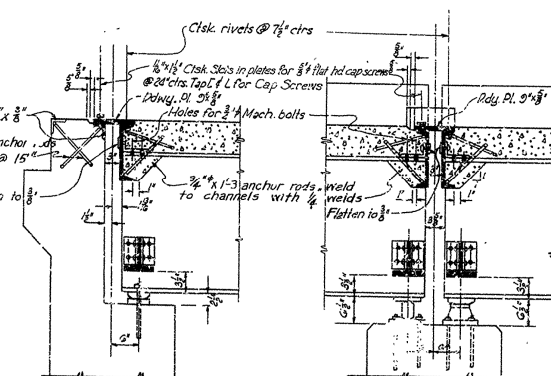


**FIXED SHOE**

**DETAILS OF BEARINGS AT INTERMEDIATE BENTS**

Scale: 1/2" = 1'-0"

**EXPANSION SHOE**

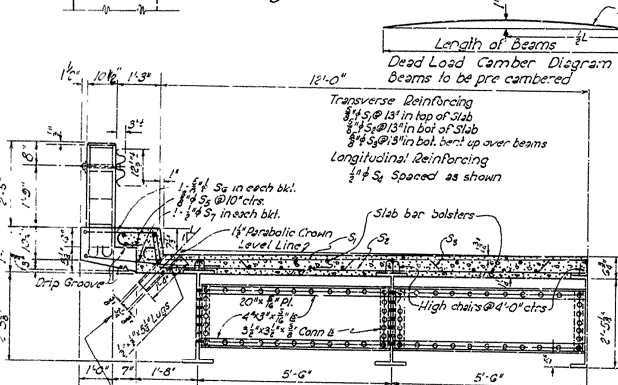


DETAIL OF JOINT AT ABUT.  
Section on E

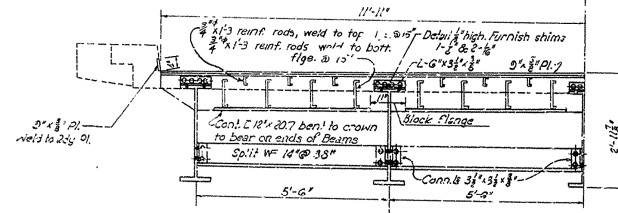
DETAIL OF JOINT AT INT. BENT  
Section at Gutter

Scale: 3/8" = 1'-0"

**SECTION A-A**



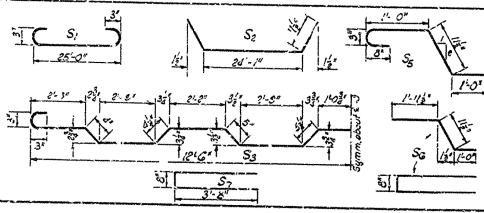
**SECTION B-B**



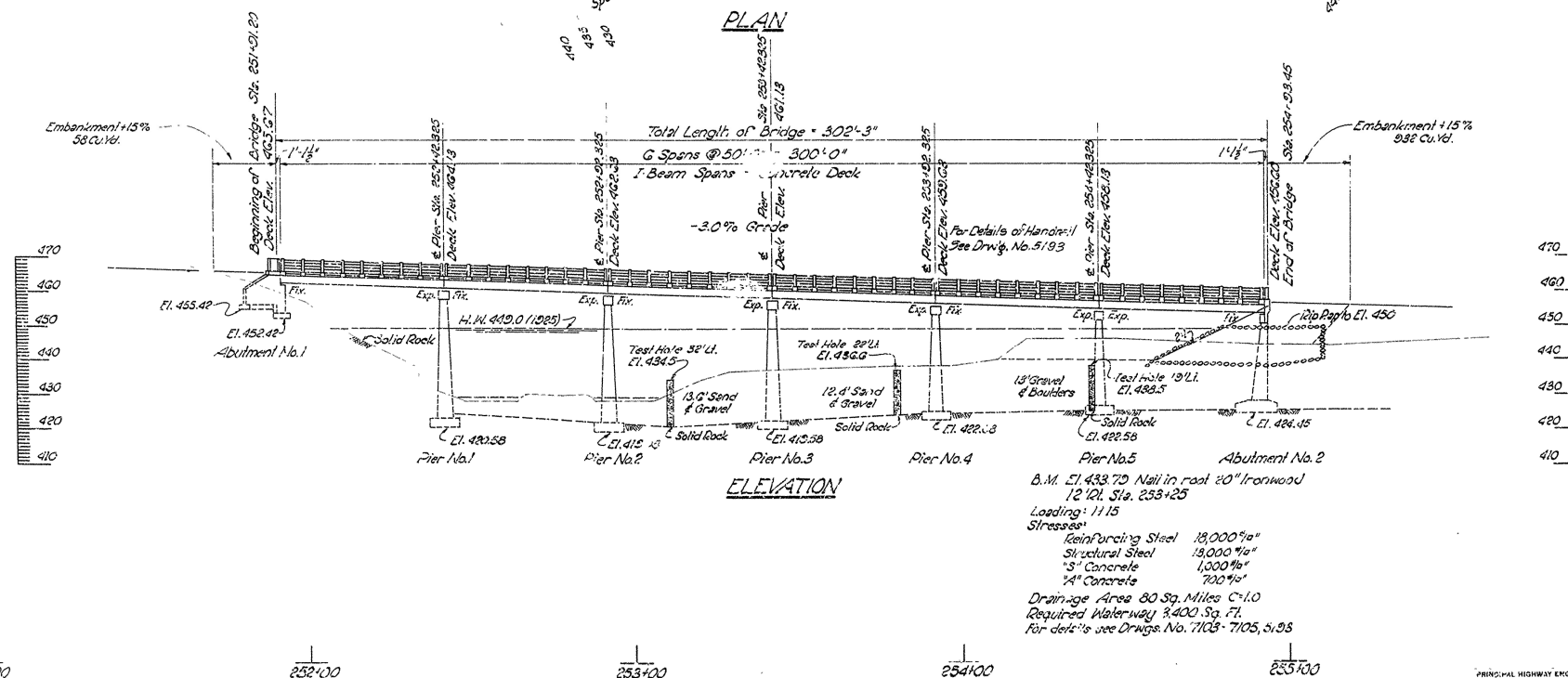
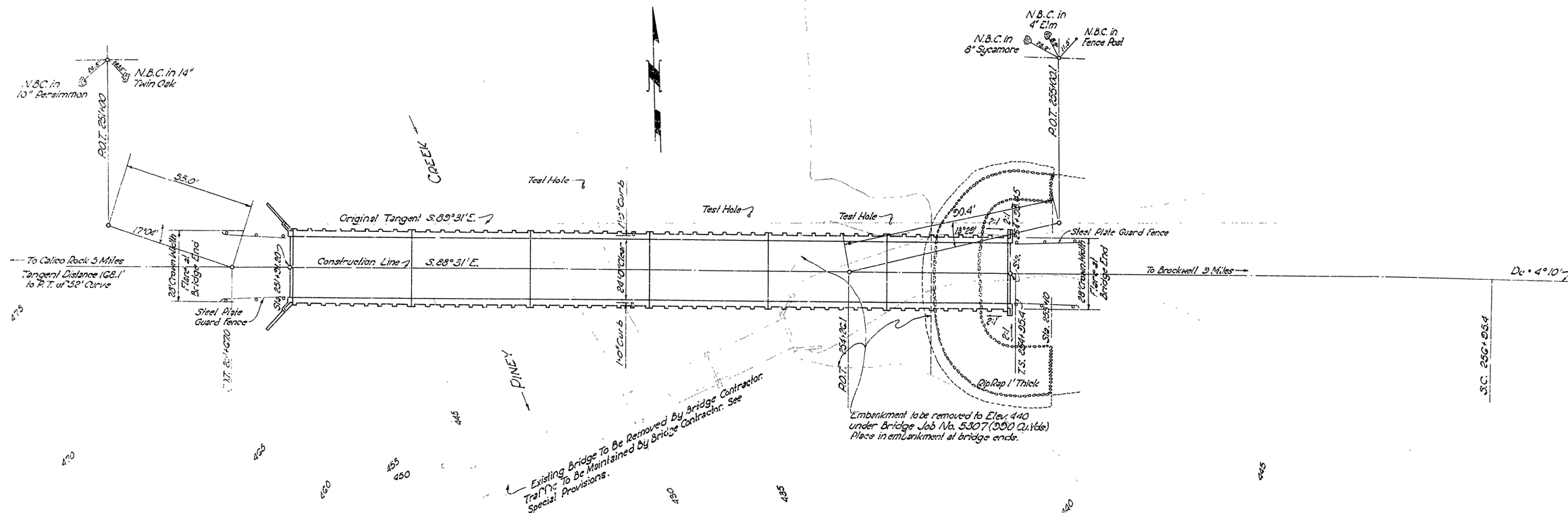
**LIST OF BENT BARS**

**BENDING DIAGRAM**

MARK	SIZE	LENGTH
S <sub>1</sub>	3/8"	23'-0"
S <sub>2</sub>	3/8"	26'-0"
S <sub>3</sub>	3/8"	20'-0"
S <sub>4</sub>	3/8"	3'-0"
S <sub>5</sub>	3/8"	3'-0"
S <sub>6</sub>	3/8"	3'-0"
S <sub>7</sub>	3/8"	3'-0"



DIET. NO.		PROJECT NO.	YEAR	NO	SK
6	ARK.	5-1-12			
STATE JOB NO.		5-2-1			



REVISED 7-2-48  
REVISED 9-9-48 Rail & Curb

LAYOUT OF  
BRIDGE OVER PINEY CREEK  
CALICO ROCK - BROCKWELL ROAD  
IZARD COUNTY

ROUTE 56 SEC. 1

ARKANSAS STATE HIGHWAY COMMISSION  
LITTLE ROCK, ARK.

Drawn By: L.E.S. Date: 6-8-47  
Traced By: E.F.S. Date: 6-8-47  
Checked By: \_\_\_\_\_ Date: \_\_\_\_\_  
Scale: 1 in. = 20 ft.

BRIDGE No. 2308 DRAWING No. 710

PRINCIPAL HIGHWAY ENGINEER (BRIDGE)