



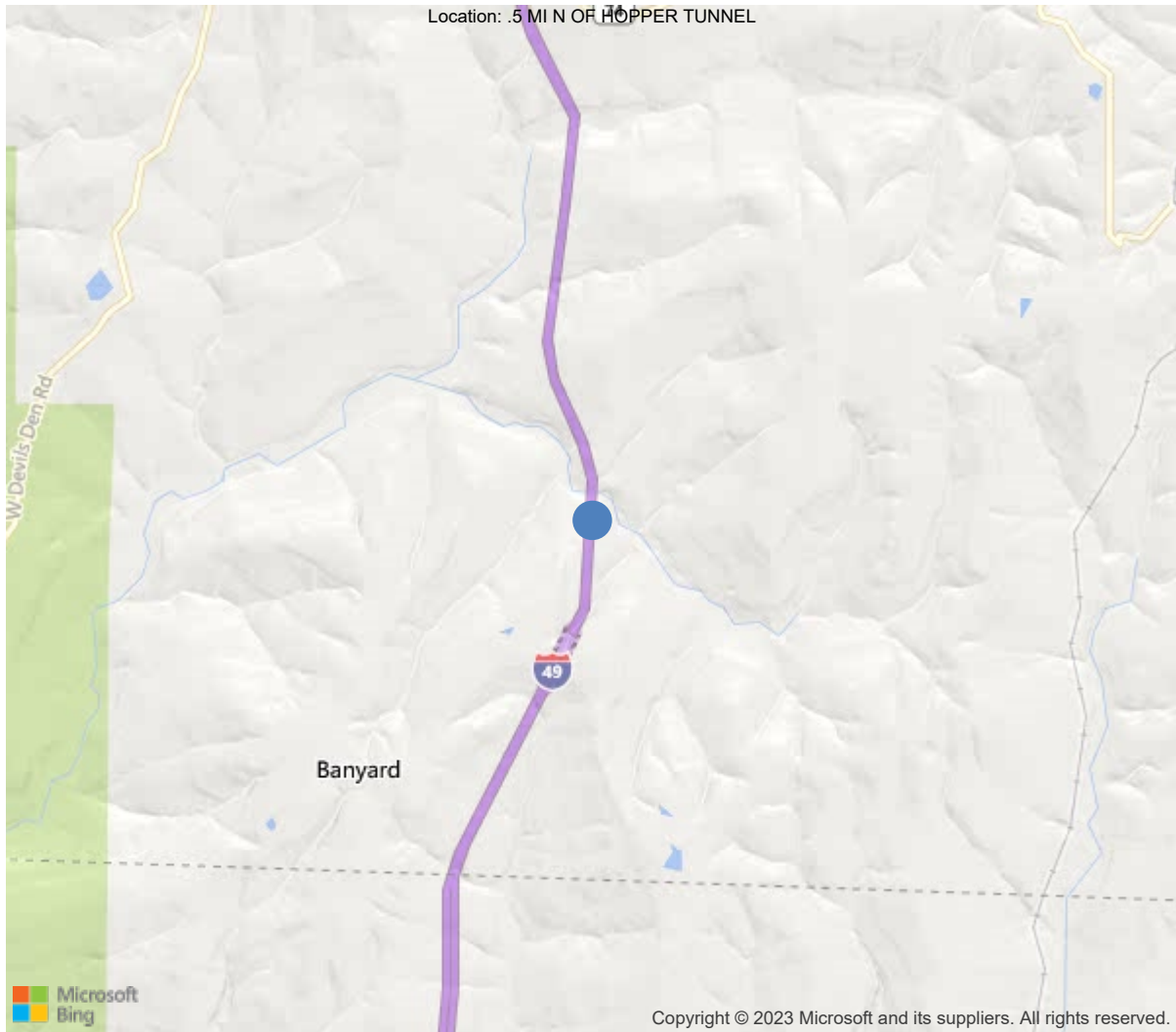
Latitude:35.77775, Longitude:-94.18627

Route:49 Section:28 Log:42.01

Arnold Road ID:72x49x28xA, Arnold Log mile:42.103

District 04, 143 - Washington County

Owner: 1 - State Highway Agency



35.77775, -94.18627





Asset #B6479(Routine)

I 49 NB LNS over BLACKBURN CREEK

Location: .5 MI N OF HOPPER TUNNEL

Team Lead: Lee Swan, Inspection Date: 04/14/2022

IDENTIFICATION	
(1) State Names	5 - Arkansas
(8) Structure Number	B6479
(5) Inventory Route	1
(2) Highway Agency District	04 - District 04
(3) County Code	143 - Washington County
(4) Place Code	0
(6) Features Intersected	BLACKBURN CREEK
(7) Facility Carried	I 49 NB LNS
(9) Location	.5 MI N OF HOPPER TUNNEL
(11) Mile Point	42.01 mi
(12) Base Highway Network	Yes
(13) LRS Inventory Rte & Subrte	0000049080
(16) Latitude	35.77775
(17) Longitude	-94.18627
(98) Border Bridge State Code	
(99) Border Bridge Structure No.	
STRUCTURE TYPE AND MATERIAL	
(43) Main Structure Type	42
Material	4 - Steel continuous
Type	2 - Stringer/Multi-beam or girder
(44) Approach Structure Type	00
Material	0 - Other
Type	0 - Other
(45) No. of Spans in Main Unit	10
(46) No. of Approach Spans	0
(107) Deck Structure Type	1 - Concrete Cast-in-Place
(108) Wearing Surface/Protective System	
Type of Wearing Surface	1 - Monolithic Concrete (concurrently pl
Type of Membrane	0 - None
Type of Deck Protection	1 - Epoxy Coated Reinforcing
AGE AND SERVICE	
(27) Year Built	1997
(106) Year Reconstructed	0
(42) Type of Service	15
On	1 - Highway
Under	5 - Waterway
(28) Lane	
On	2
Under	0
(29) Average Daily Traffic	10500
(30) Year of ADT	2018
(109) Truck ADT	26 %
(19) Bypass, Detour Length	1 mi
GEOMETRIC DATA	
(48) Length of Maximum Span	180 ft
(49) Structure Length	1512 ft
(50) Curb or Sidewalk Width	
Left	0 ft
Right	0 ft
(51) Bridge Roadway Width Curb to Curb	41.3 ft
(52) Deck Width Out to Out	44.2 ft
(32) Approach Roadway Width (W/Shoulders)	42 ft
(33) Bridge Median	3 - Closed median wit
(34) Skew	0 Deg
(35) Structure Flared	0 - No flare
(10) Inventory Route Min Vert Clear	99.99 ft
(47) Inventory Route Total Horiz Clear	42.3 ft
(53) Min Vert Clear Over Bridge Rdwy	99.99 ft
(54) Min Vert Underclear	0 ft
Ref:	
(55) Min Lat Underclear RT	99.9 ft
Ref:	
(56) Min Lat Underclear LT	0 ft
NAVIGATION DATA	
(38) Navigation Control	0 - No navigation control on w
(111) Pier Protection	1 - Navigation protection not
(39) Navigation Vertical Clearance	0 ft
(116) Vert-Lift Bridge Nav Min Vert Clear	0 ft
(40) Navigation Horizontal Clearance	0 ft

CLASSIFICATION	
(112) NBIS Bridge Length	Y
(104) Highway System	1
(26) Functional Class	1 - Rural Principal Arterial -
(100) Defense Highway	1 - The inventory route is on
(101) Parallel Structure	R - The right structure of par
(102) Direction of Traffic	1 - way traffic
(103) Temporary Structure	
(105) Federal Lands Highways	0 - N/A
(110) Designated National Network	1 - The inventory route is par
(20) Toll	3 - On free road. The structu
(21) Maintain	1 - State Highway Agency
(22) Owner	1 - State Highway Agency
(37) Historical Significance	5 - Bridge is not eligible for
CONDITION	
(58) Deck	7
(59) Superstructure	6
(60) Substructure	7
(61) Channel & Channel Protection	7
(62) Culverts	N
LOAD RATING AND POSTING	
(31) Design Load	6 - MS 18+Mod / HS 20+Mod
(63) Operating Rating Method	1
(64) Operating Rating	
Type	1 - Load Factor(LF)
Rating	60
(65) Inventory Rating Method	1 - Load Factor(LF)
(66) Inventory Rating	
Type	
Rating	36
(70) Bridge Posting	5 - Equal to or above legal loads
(41) Structure Open/Posted/Closed	A - Open, no restriction
APPRAISAL	
(67) Structural Evaluation	7
(68) Deck Geometry	7
(69) Clearances, Vertical/Horizontal	N
(71) Waterway Adequacy	9
(72) Approach Roadway Alignment	8
(36A) Bridge Railings	1 - Inspected feature meets current
(36B) Transitions	1 - Inspected feature meets current
(36C) Approach Guardrail	1 - Inspected feature meets current
(36D) Approach Guardrail Ends	1 - Inspected feature meets current
(113) Scour Critical Bridges	5 - Bridge foundations determined t
PROPOSED IMPROVEMENTS	
(75) Type of Work	
(76) Length of Structure Improvement	0 ft
(94) Bridge Improvement Cost	\$ 0
(95) Roadway Improvement Cost	\$ 0
(96) Total Project Cost	\$ 0
(97) Year of Improvement Cost Estimate	
(114) Future ADT	11955
(115) Year of Future ADT	2028

INSPECTIONS *			
(90) Inspection Date	04/14/2022		
(91) Frequency	24		
(92) Critical Feature Inspection	Done	Freq. (Mon)	Date
A: Fracture Critical Detail	No		
B: Underwater Inspection	No		
C: Other Special Inspection			
<p>* The inspection date and frequency information in this box contains the current NBI date and frequency information. Please refer to the report header for the date this inspection was conducted.</p>			



Asset #B6479(Routine)

District: 04, County: 143 - Washington County

Team Lead: Lee Swan, Inspection Date: 04/14/2022

## General Observation

04/12/2018 – MFF & JRT - Inspection conducted on this date, using Aspen 9233.

Due to construction of median wall on I-49 Job # BB0409. We were unable to use inspection vehicle for this bridge inspection.

---

**58 - Deck** (7 - GOOD CONDITION - some minor problems.)

The driving surface was diamond ground under Job # BB0409

---

**59 - Superstructure** (6 - SATISFACTORY CONDITION - structural elements show some minor deterioration.)

.

---

## A-46 - Asset Files

-

---





Asset #B6479(Routine)

I 49 NB LNS over BLACKBURN CREEK

Location: .5 MI N OF HOPPER TUNNEL

Team Lead: Lee Swan, Inspection Date: 04/14/2022

ELEMENTS	DESCRIPTION	UNITS	TOTAL	CS1	CS2	CS3	CS4
12	Reinforced Concrete Deck	SF	66779	51189	4197	11393	0
1080	Delamination/Spall/Patched Area	SF	12	0	10	2	0
1120	Efflorescence/Rust Staining	SF	390	0	390	0	0
1130	Cracking (RC and Other)	SF	15188	0	3797	11391	0
(12) 04/21/2022 - RLS & ADC - Large transverse and longitudinal cracks. Cracks are no longer sealed. Plowable pavement markers have popped out in scattered locations. The driving surface has been diamond ground in both lanes with the gutters and a 12" section at center line that has not been ground. Cracks with efflorescence in the overhang soffits.							
107	Steel Open Girder/Beam	LF	6048	5474	550	24	0
1000	Corrosion	LF	574	0	550	24	0
515	Steel Protective Coating	SF	96180	93723	1512	756	189
3430	Oxide Film Degradation Color/Texture Adherence(Steel Protective Coatings)	LF	2457	0	1512	756	189
(107) 04/21/2022-RLS & ADC- Span 3 girder 4, measurable section loss to bottom flange. Pack rust beginning to develop at the splices in the bottom flanges. Bent 11 girder 1, laminating rust in the bottom flange. Girders have minor corrosion at the ends at joint locations. Span 8 girder 3, corrosion due to loss of protective coating.  (515-107) 04/21/2022-RLS & ADC- Granular texture on the bottom of the bottom flanges. Span 3 girder 4 has section loss due to failing protective coating.							
210	Reinforced Concrete Pier Wall	LF	126	126	0	0	0
(210) 04/21/2022-RLS & ADC- All pier walls have minor vertical hairline cracks that do not reach the level of CS 2.							
215	Reinforced Concrete Abutment	LF	141	92	45	4	0
1080	Delamination/Spall/Patched Area	LF	5	0	1	4	0
1120	Efflorescence/Rust Staining	LF	5	0	5	0	0
1130	Cracking (RC and Other)	LF	39	0	39	0	0
(215) 04/21/2022-RLS & ADC - Both abutments have spalls, cracks and efflorescence. Erosion at north abutment.							
234	Reinforced Concrete Pier Cap	LF	387	264	110	13	0
1080	Delamination/Spall/Patched Area	LF	9	0	6	3	0
1120	Efflorescence/Rust Staining	LF	34	0	30	4	0
1130	Cracking (RC and Other)	LF	80	0	74	6	0



Asset #B6479(Routine)

I 49 NB LNS over BLACKBURN CREEK

Location: .5 MI N OF HOPPER TUNNEL

Team Lead: Lee Swan, Inspection Date: 04/14/2022

ELEMENTS	DESCRIPTION	UNITS	TOTAL	CS1	CS2	CS3	CS4
(234) 04/21/2022-RLS & ADC - Bent 2 has a small spall. Bent 3 large spall and efflorescence. Bent 8 delam. All caps have cracks.							
302	Compression Joint Seal	LF	83	28	55	0	0
2310	Leakage	LF	40	0	40	0	0
2320	Seal Adhesion	LF	15	0	15	0	0
(302) 04/21/2022-RLS & ADC - Joint seals have adhesion loss and are leaking.							
303	Assembly Joint with Seal	LF	83	52	24	7	0
2350	Debris Impaction	LF	10	0	4	6	0
2360	Adjacent Deck or Header	LF	21	0	20	1	0
(303) 04/21/2022-RLS & ADC - Spalling and repaired areas adjacent to joints. Debris in joints with areas completely compacted. Maintenance has cut out part of the bottom of the joints in each bay to reinforce the finger joints.							
310	Elastomeric Bearing	EA	52	37	5	10	0
1000	Corrosion	EA	4	0	3	1	0
1020	Connection	EA	7	0	0	7	0
2220	Alignment	EA	4	0	2	2	0
(310) 04/21/2022-RLS & ADC - Bent 3, backside bearings 1-4 are pushed forward with 3 and 4 being the worst. Bent 3, broken anchor bolts on the bearings on the ahead side. Bearings at bent 11 have corrosion.							
321	Reinforced Concrete Approach Slab	SF	2739	2569	130	40	0
1080	Delamination/Spall/Patched Area	SF	4	0	0	4	0
1130	Cracking (RC and Other)	SF	166	0	130	36	0
(321) 04/21/2022-RLS & ADC - Cracks and spall in both approach slabs.							
331	Reinforced Concrete Bridge Railing	LF	3024	1495	1526	3	0
1080	Delamination/Spall/Patched Area	LF	3	0	0	3	0
1120	Efflorescence/Rust Staining	LF	6	0	6	0	0
1130	Cracking (RC and Other)	LF	1512	0	1512	0	0
7000	Damage	LF	8	0	8	0	0

ELEMENTS	DESCRIPTION	UNITS	TOTAL	CS1	CS2	CS3	CS4
(331)	04/21/2022-RLS & ADC - Vertical, longitudinal and areas of map cracking. Large spalls, efflorescence and minor collision damage.						





Asset #B6479(Routine)

I 49 NB LNS over BLACKBURN CREEK

Location: .5 MI N OF HOPPER TUNNEL

Team Lead: Lee Swan, Inspection Date: 04/14/2022

## Deck

ELEMENTS	DESCRIPTION	UNITS	TOTAL	CS1	CS2	CS3	CS4
12	Reinforced Concrete Deck	SF	66779	51189	4197	11393	0
1080	Delamination/Spall/Patched Area	SF	12	0	10	2	0
1120	Efflorescence/Rust Staining	SF	390	0	390	0	0
1130	Cracking (RC and Other)	SF	15188	0	3797	11391	0
(12) 04/21/2022 - RLS & ADC - Large transverse and longitudinal cracks. Cracks are no longer sealed. Plowable pavement markers have popped out in scattered locations. The driving surface has been diamond ground in both lanes with the gutters and a 12" section at center line that has not been ground. Cracks with efflorescence in the overhang soffits.							

**58 - Deck** (7 - GOOD CONDITION - some minor problems.)

Comment: The driving surface was diamond ground under Job # BB0409



Asset #B6479(Routine)

I 49 NB LNS over BLACKBURN CREEK

Location: .5 MI N OF HOPPER TUNNEL

Team Lead: Lee Swan, Inspection Date: 04/14/2022

**Superstructure**

ELEMENTS	DESCRIPTION	UNITS	TOTAL	CS1	CS2	CS3	CS4
107	Steel Open Girder/Beam	LF	6048	5474	550	24	0
1000	Corrosion	LF	574	0	550	24	0
515	Steel Protective Coating	SF	96180	93723	1512	756	189
3430	Oxide Film Degradation Color/Texture Adherence(Steel Protective Coatings)	LF	2457	0	1512	756	189
(107) 04/21/2022-RLS & ADC- Span 3 girder 4, measurable section loss to bottom flange. Pack rust beginning to develop at the splices in the bottom flanges. Bent 11 girder 1, laminating rust in the bottom flange. Girders have minor corrosion at the ends at joint locations. Span 8 girder 3, corrosion due to loss of protective coating.							
(515-107) 04/21/2022-RLS & ADC- Granular texture on the bottom of the bottom flanges. Span 3 girder 4 has section loss due to failing protective coating.							

**59 - Superstructure** (6 - SATISFACTORY CONDITION - structural elements show some minor deterioration.)

Comment: .

## I 49 NB LNS over BLACKBURN CREEK

**Location: .5 MI N OF HOPPER TUNNEL**

**Team Lead:** Lee Swan, **Inspection Date:** 04/14/2022

## Substructure

ELEMENTS	DESCRIPTION	UNITS	TOTAL	CS1	CS2	CS3	CS4
210	Reinforced Concrete Pier Wall	LF	126	126	0	0	0
(210) 04/21/2022-RLS & ADC- All pier walls have minor vertical hairline cracks that do not reach the level of CS 2.							
215	Reinforced Concrete Abutment	LF	141	92	45	4	0
1080	Delamination/Spall/Patched Area	LF	5	0	1	4	0
1120	Efflorescence/Rust Staining	LF	5	0	5	0	0
1130	Cracking (RC and Other)	LF	39	0	39	0	0
(215) 04/21/2022-RLS & ADC - Both abutments have spalls, cracks and efflorescence. Erosion at north abutment.							
234	Reinforced Concrete Pier Cap	LF	387	264	110	13	0
1080	Delamination/Spall/Patched Area	LF	9	0	6	3	0
1120	Efflorescence/Rust Staining	LF	34	0	30	4	0
1130	Cracking (RC and Other)	LF	80	0	74	6	0
(234) 04/21/2022-RLS & ADC - Bent 2 has a small spall. Bent 3 large spall and efflorescence. Bent 8 delam. All caps have cracks.							





Asset #B6479(Routine)

I 49 NB LNS over BLACKBURN CREEK

Location: .5 MI N OF HOPPER TUNNEL

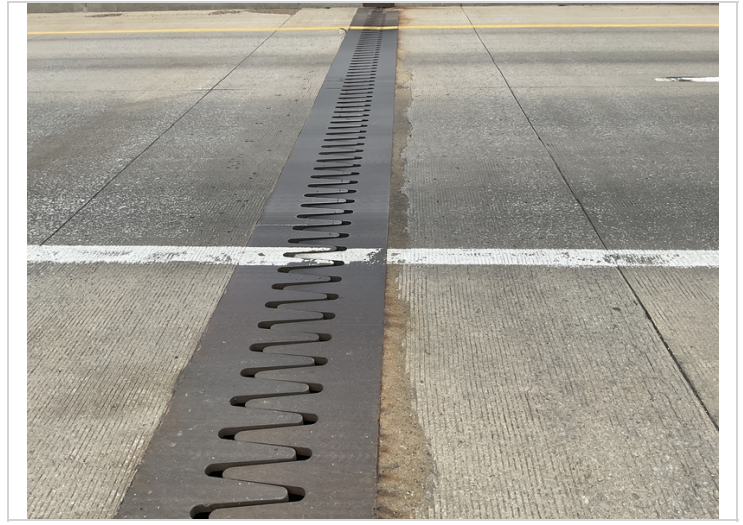
Team Lead: Lee Swan, Inspection Date: 04/14/2022

## Culvert

ELEMENTS	DESCRIPTION	UNITS	TOTAL				
				CS1	CS2	CS3	CS4



Elevation



Bent 3, patching and spall adjacent to the assembly joint.



Typical deck



Span 4, large transverse cracks.





Minor collision damage on the left bridge rail in span 5.



Span 6, large transverse cracks.



Span 6, right bridge rail, large spall with exposed rebar.



Span 7, deep spall in the right lane





Span 7, missing plowable marker.



Bent 8, debris impact in assembly joint.



Span 9, longitudinal cracks.



Typical cracks in concrete bridge rail





Span 10, large transverse cracks.



Large spall in northern approach slab.



Map cracking in northern approach slab.



Large transverse cracks in northern approach slab.





Erosion at bent 11,



Span 8 girder 1, corrosion in lower web



Span 7 girder 2, corrosion on bottom flange.



Span 7, bent 8, corrosion on diaphragm.

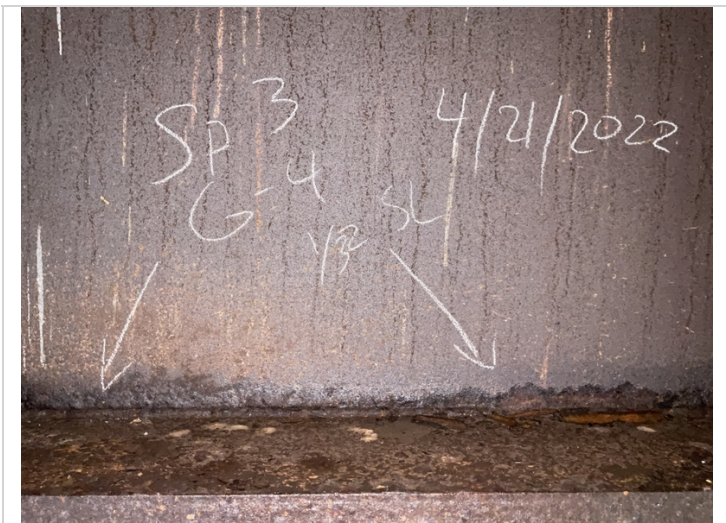




Typical soffit



Span 3 girder 3, protective coating is failing.



Span 3 girder 4, 1/32 section loss to lower web and bottom flange.



Bent 3 ahead side, large spall, horizontal cracking and efflorescence with build up.





Bent 3, large spall on the ahead side.



Span 3 girder 4, 3/32ths section loss to bottom flange. 1 3/8 is the thickness without section loss.



Span 3 girder 4, large flakes in the protective coating.



Girder 4 at bent 3,





Span 2 Bent 3 bearing 4,



Bent 11 girder 1, laminating rust in girder and bearing.



Bent 11 bearing 1, laminating rust



Bent 11 girder 3, protective coating is failing.





Elevation



Large spall in the top of the backwall bent 1.



Typical deck



Inventory



### Maintenance Needs

Date Reported: 04/27/2010

Priority: C - Important

Type of Work: (Inactive) (Inactive) 1 - Clean

Status: Monitor

Component: Element

---

### Deficiency Description

Finger joint assemblies

RLS & ADC- 04/21/2022- Finger joints have debris impaction on the ends.

MFF & JRT - 04/09/2018 - joints were clean at this inspection.

Finger joint assemblies have heavy debris at the Lt. and Rt. gutter line.

Added on 4/21/2016 KRM 38450

Finger joint assemblies were clear of debris at time of inspection.

### Remarks

---



Bent 8, debris impaction in assembly joint.



Minor dirt and debris in gutter areas.

**Maintenance Needs**

**Date Reported:** 04/27/2010

**Priority:** D- Routine

**Type of Work:** Repair (General)

**Status:** Monitor

**Component:** Element

---

**Deficiency Description**

Elastomeric bearings and anchor bolts

MFF & JRT - 04/09/2018 - added North Abutment Girder 4 broken anchor bolt.

Pier 2, Girder 3 ahead: Anchor bolt broken. Pier 8, Girder 3; Sole plate not installed square

**Remarks**

---



Bent 2 anchor bolt broken Bearing like 1" being fully extended.



North Abutment Girder 4 broken anchor bolt.



**Maintenance Needs**

**Date Reported:** 04/27/2010

**Priority:** D- Routine

**Status:** Monitor

**Type of Work:** (Inactive) (Inactive) 9 - None

**Component:**

---

**Deficiency Description**

Unpainted Steel Open Girders:

MFF & JRT - 04/09/2018 - maintenance items still exist no apparent change since last inspection.

Span 4, Girder 1, 1st. field splice ahead of Pier 3: Loose bolt in the bottom flange at field splice.

Span 7, Girder 1: Inspection handrail separated.

Inspection handrail bent in many places.

Bird droppings on the web of the girders. Typical condition.

**Remarks**

---



Span 4 Girder 1 first splice plate and loose bolt bottom flange.

**Maintenance Needs**

**Date Reported:** 04/27/2010

**Priority:** D- Routine

**Type of Work:** Repair (General)

**Status:** Monitor

**Component:** Substructure

---

**Deficiency Description**

EROSION:

MFF & JRT - 04/09/2018 - maintenance items still exist no apparent change since last inspection.

Span 2 & 3, Rt: Moderate erosion occurring.

Span 3 & 4: Moderate erosion occurring along the centerline.

North abutment: Minor embankment erosion.

**Remarks**

---



Erosion at bent 11,



North Abutment embankment erosion.



Bent 3 erosion .



### Maintenance Needs

Date Reported: 04/27/2010

Priority: D- Routine

Type of Work: Repair (General)

Status: Monitor

Component: Element

---

### Deficiency Description

CONCRETE BRIDGE RAIL AND MEDIAN WALL:

MFF & JRT - 04/09/2018 - maintenance items still exist no apparent change since last inspection.

Vertical efflorescence cracks on the front and backside of the bridge rail.

Map cracking in scattered locations.

Numerous scrapes from traffic impact on Rt. bridge rail.

Span 5: Collision damage spall with rebar exposed.

### Remarks

---



Span 6, right bridge rail, large spall with exposed rebar.



Right rail span 1.



Vertical cracking in parapet wall typical throughout.



Span 5 Collision damage.



**Maintenance Needs**

**Date Reported:** 06/21/2012

**Priority:** D- Routine

**Type of Work:** Repair (General)

**Status:** Monitor

**Component:** Element

---

**Deficiency Description**

APPROACH SLABS:

MFF & JRT - 04/09/2018 - South Abutment Joint sealant has abraded. Previous maintenance items still exist.

South approach 1 minor spall in right lane filled with asphalt.

Added on 5/29/14, TJB

South Approach: Left lane has a minor spall filled with asphalt.

**Remarks**

---



Large transverse cracks in northern approach slab.







South Abutment Joint sealant has abraded.

### Maintenance Needs

Date Reported: 06/21/2012

Priority: D- Routine

Type of Work: Repair (General)

Status: Monitor

Component: Element

---

### Deficiency Description

R/C Caps:

MFF & JRT - 04/09/2018 - maintenance items still exist no apparent change since last inspection.

All caps have shrinkage cracks on the top face.

Pier 1: 7 vertical hairline cracks.

Pier 2: 2 vertical hairline cracks. Minor debris on the cap at the centerline.

Pier 3: 4 vertical hairline cracks

Pier 4: 7 vertical hairline cracks.

Pier 5: 6 vertical hairline cracks.

Pier 6: 4 vertical hairline cracks.

Pier 6: Horizontal crack in cap.

Pier 7: 19 vertical hairline cracks.

Pier 8: 4 vertical hairline cracks.

Pier 9: 12 vertical hairline cracks.

### Remarks



Bent 5 upstream end of cap map Cracking.



Bent 5 Hairline Cracking in face of cap.

**Maintenance Needs**

**Date Reported:** 06/21/2012

**Priority:** D- Routine

**Type of Work:** Repair (General)

**Status:** Monitor

**Component:** Element

---

**Deficiency Description**

R/C Abutments:

MFF & JRT - 04/09/2018 - maintenance items still exist no apparent change since last inspection.

Minor vertical efflorescent cracks in the back wall at the north and south abutments.

Minor spall on top of headwall at the north abutment.

**Remarks**

---



Large spall in the top of the backwall bent 1.







North Abutment map Cracking under Girders 1 and 2.



**Maintenance Needs**

**Date Reported:** 06/21/2012

**Priority:** D- Routine

**Type of Work:** Repair (General)

**Status:** Monitor

**Component:** Element

---

**Deficiency Description**

Compression joint seals:  
Minor abrasions. Joints leaking at both abutments.

**Remarks**

---



Large spall in northern approach slab.



South Abutment Joint sealant has abraded.

**Maintenance Needs**

**Date Reported:** 04/16/2020

**Priority:** D- Routine

**Type of Work:** Repair (General)

**Status:** Monitor

**Component:** Element

---

**Deficiency Description**

APPROACHES: Spalling in approach slab.

**Remarks**

---



Large spall in northern approach slab.



Approach 1: Spalling.



Approach 2: Spalling.





**Asset #B6479**(Routine)

**I 49 NB LNS over BLACKBURN CREEK**

**Location: .5 MI N OF HOPPER TUNNEL**

**Team Lead:** Lee Swan, **Inspection Date:** 04/14/2022

#### **Maintenance Needs**

**Date Reported:** 04/16/2020

**Priority:** D- Routine

**Type of Work:** Repair (General)

**Status:** Monitor

**Component:** Deck

---

#### **Deficiency Description**

SAW JOINTS: Missing material in scattered locations.

#### **Remarks**

---



Saw Joint Seals: Missing. Scattered locations.

**Maintenance Needs**

**Date Reported:** 04/21/2022

**Priority:** D- Routine

**Type of Work:** (Inactive) (Inactive) 1 - Clean

**Status:** Open

**Component:** Channel

---

**Deficiency Description**

Small trees are restricting the use of the under bridge inspection vehicle on spans 1, 2, 9 and 10.

**Remarks**

---



Span 1, trees restricting use of the under bridge inspection vehicle



**Asset #B6479(Routine)**

**I 49 NB LNS over BLACKBURN CREEK**

**Location: .5 MI N OF HOPPER TUNNEL**

**Team Lead: Lee Swan, Inspection Date: 04/14/2022**

## **Routine Maintenance**

Check Box Maintenance Items

<b>Type of Maintenance</b>	<b>Is recommended?</b>
A-54 - Sealable Deck Cracks	
A-55 - Deck Washing Needed	
A-56 - Joint Cleaning/Flushing Needed	
A-57 - Beam End and Bearing Paint Needed	
A-58 - Cap Cleaning/Flushing Needed	
A-59 - Joint Repair Needed	
A-60 - Full Beam Painting Needed	
A-61 - Polymer Overlay Advised	
A-62 - Hydro and LMC Advised	
A-63 Missing/Incorrect Log Mile Signage	
A-64 - Vegetation Removal Requested	





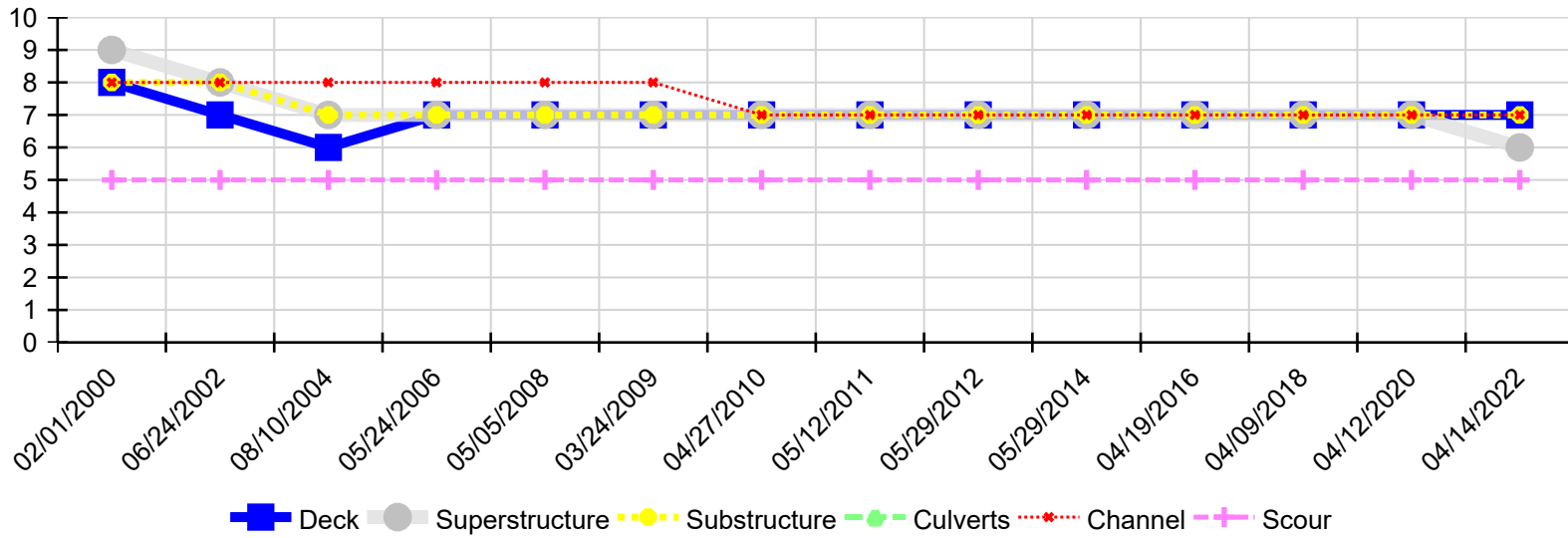
Asset #B6479(Routine)

I 49 NB LNS over BLACKBURN CREEK

Location: .5 MI N OF HOPPER TUNNEL

Team Lead: Lee Swan, Inspection Date: 04/14/2022

Condition History



Inspection Date	Deck	Superstructure	Substructure	Culverts	Channel	Scour
04/14/2022	7	6	7	N	7	5
04/12/2020	7	7	7	N	7	5
04/09/2018	7	7	7	N	7	5
04/19/2016	7	7	7	N	7	5
05/29/2014	7	7	7	N	7	5
05/29/2012	7	7	7	N	7	5
05/12/2011	7	7	7	N	7	5
04/27/2010	7	7	7	N	7	5
03/24/2009	7	7	7	N	8	5
05/05/2008	7	7	7	N	8	5
05/24/2006	7	7	7	N	8	5
08/10/2004	6	7	7	N	8	5
06/24/2002	7	8	8	N	8	5
02/01/2000	8	9	8	N	8	5