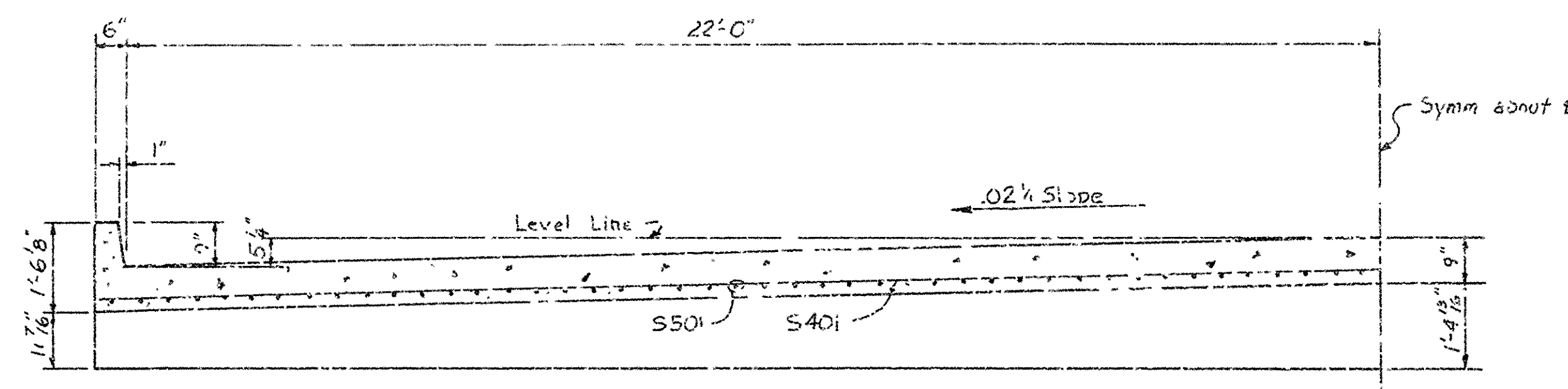


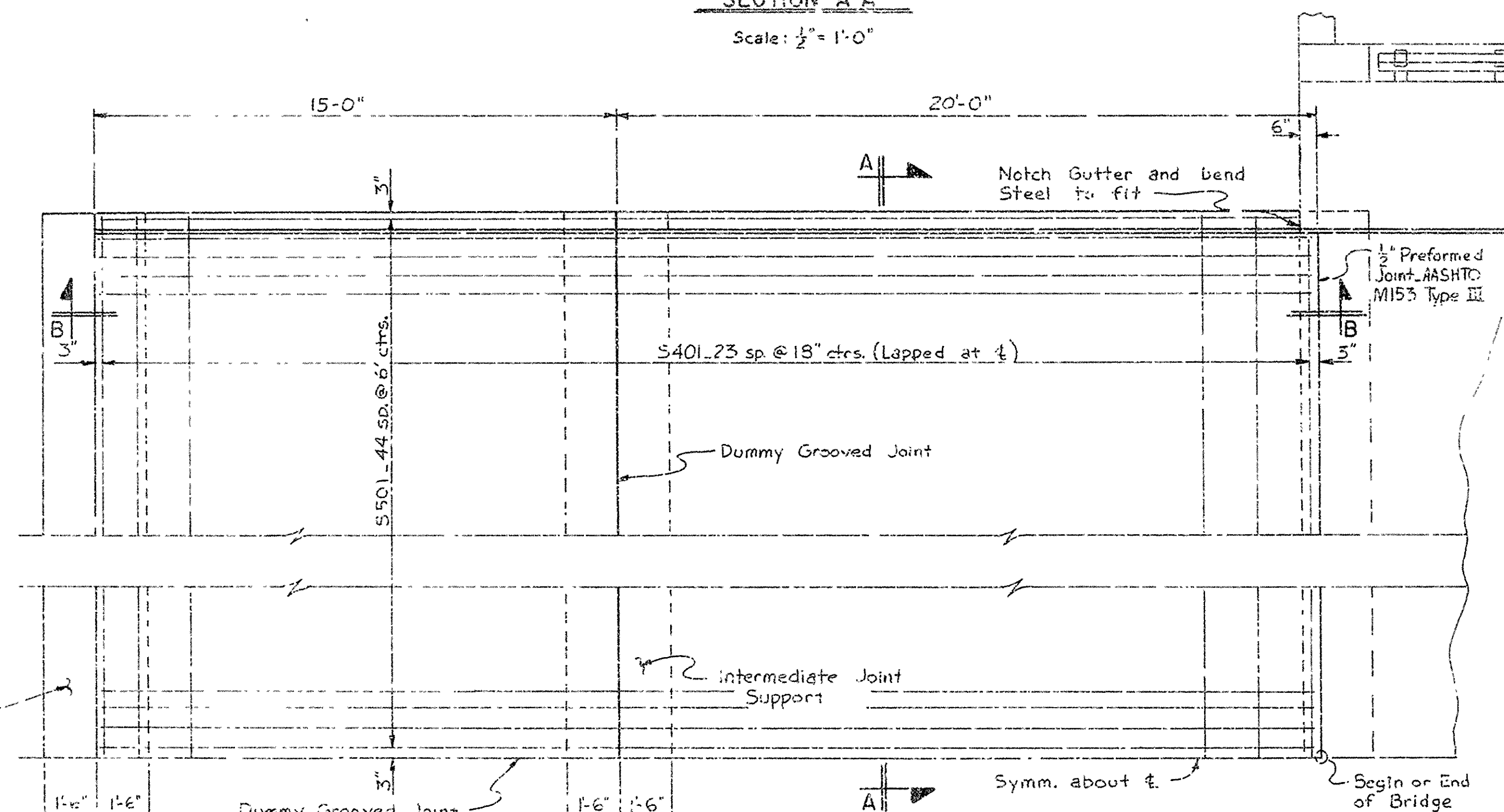
DATE REVISED	DATE FILMED	DATE REVISED	DATE FILMED	FED. PROJ. NO.	STATE	FED. AID PROJ. NO.	PROJECT NO.	TOTAL SHEETS
				6	ARK.			
				JOB NO.		4644	31	77

① 5662 - APPR. SLABS - 20452



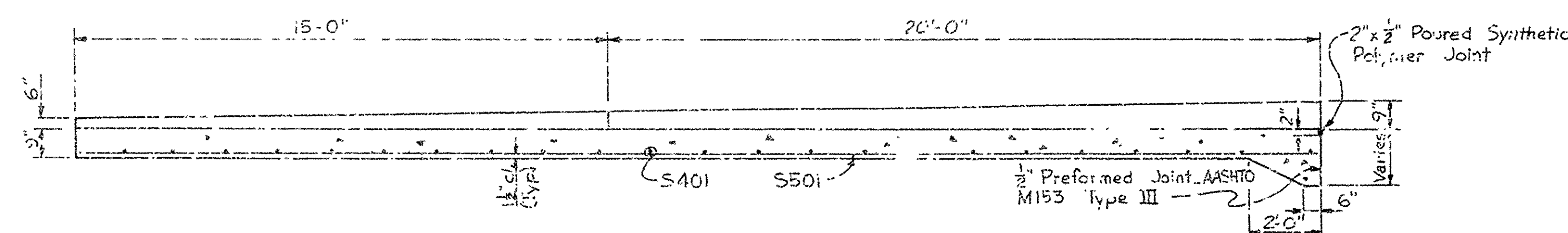
SECTION A-A

Scale:  $\frac{1}{2}'' = 1'-0''$



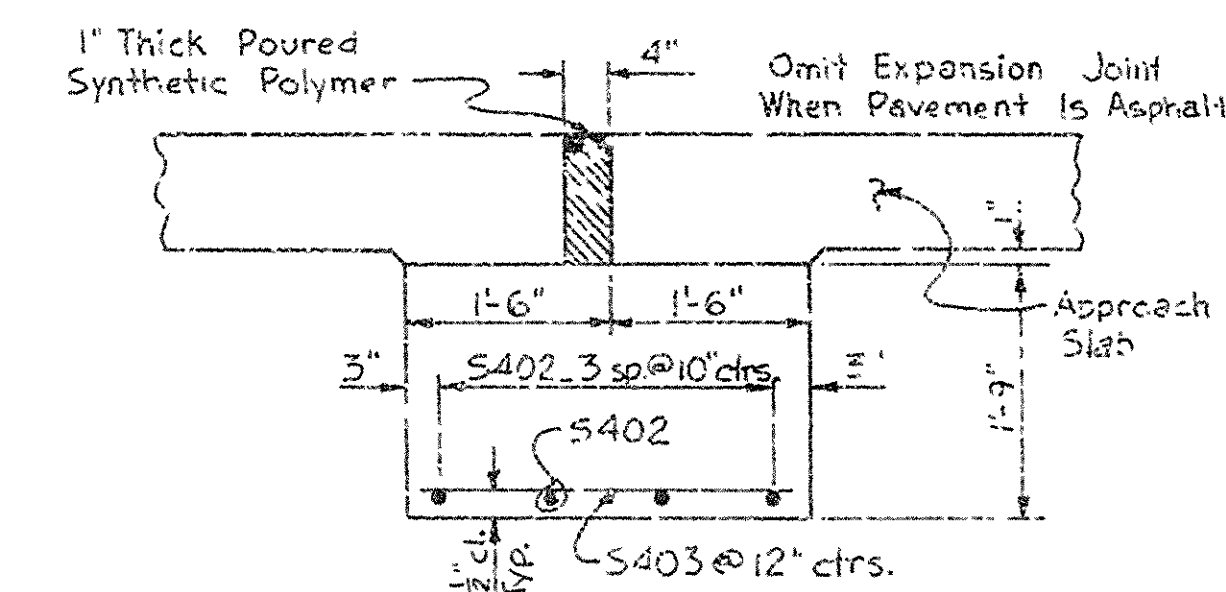
HALF PLAN

Scale:  $\frac{3}{8}'' = 1'-0''$



SECTION B-B

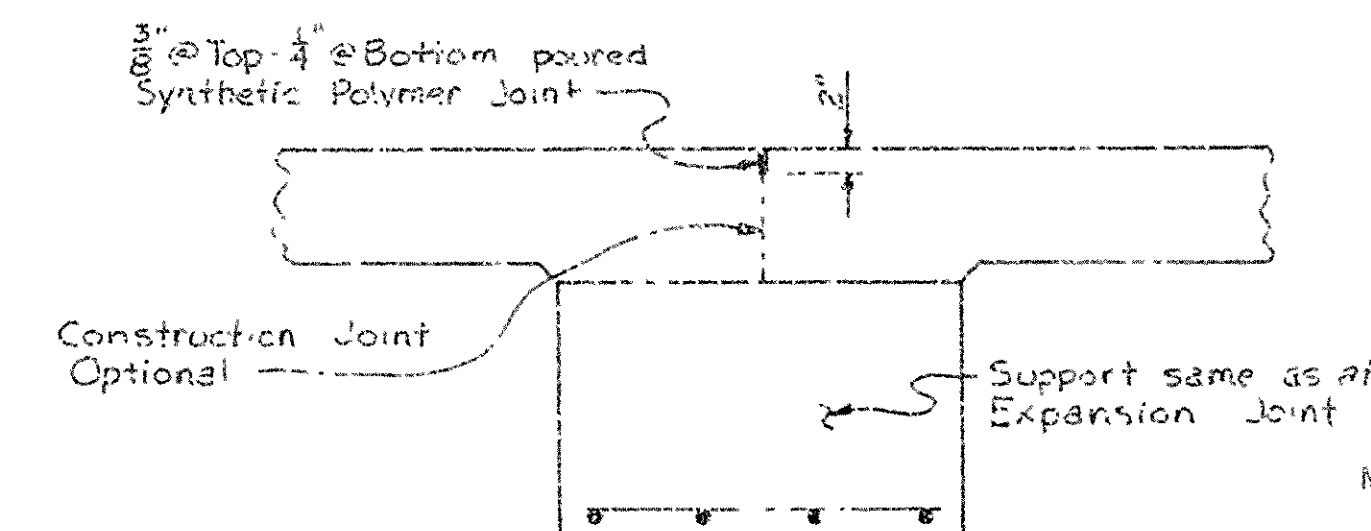
Scale:  $\frac{3}{8}'' = 1'-0''$



DETAILS OF SUPPORT

AT EXPANSION JOINT

Scale:  $\frac{3}{8}'' = 1'-0''$



DETAILS OF DUMMY

GROOVED JOINT

Scale:  $\frac{3}{8}'' = 1'-0''$

NOTE: JOINT MATERIAL, COMPLETELY FILL JOINT TO WITHIN 1" OF PAVEMENT SURFACE WITH HARDWOOD SAWDUST SATURATED WITH AN MC-800 ASPHALT, AASHTO M-82-70 RATIO: ONE PART ASPHALT TO THREE PARTS SAWDUST.

BAR LIST - EACH SLAB

MARK	NO. REQ'D.	LENGTH	FIN DIA.
S401	48	23'-0"	Str.
S402	16	23'-0"	Str.
S403	88	2'-7"	Str.
	90	34'-8"	Str.

NOTES:

CONCRETE IN APPROACH SLABS TO BE CLASS "A" OR "S" OR PAVEMENT MIXTURE.

REINFORCING STEEL TO BE ASTM A615, GRADE 40.

APPROACH SLABS SHALL BE PAID FOR AT THE CONTRACT UNIT PRICE BID FOR "APPROACH SLABS." THE PRICE BID SHALL BE FULL COMPENSATION FOR FURNISHING ALL MATERIALS, INCLUDING REINFORCING STEEL, CONCRETE, EXCAVATION AND FORMS AND LABOR TO COMPLETE GUTTERS.

FOR DETAILS OF POSTS, GUARD FENCE AND ATTACHMENT OF GUARD FENCE TO POSTS, SEE JOB DETAILS PERTAINING TO THESE ITEMS.

APPROX. QUANTITIES FOR APPROACH SLAB (EACH SLAB)  
REINFORCING STEEL (GRADE 40): 4390 LBS.  
CONCRETE: 64.4 CU YDS.

NOTE: APPROACH SLABS TO HAVE ROADWAY SURFACE FINISH AS SPECIFIED IN SP802-7 BRIDGE ROADWAY SURFACE FINISH.

DETAILS OF APPROACH SLABS  
BRIDGE OVER MILL CREEK  
SOUTH Y ST - CARNALL ST.  
SEBASTIAN COUNTY  
ROUTE 59 SEC. 8  
ARKANSAS STATE HIGHWAY COMMISSION  
LITTLE ROCK, ARK.

DRAWN BY: JGT DATE: 9-3-26  
CHECKED BY: JGT DATE: 9-3-26  
DESIGNED BY: SJD DATE: 9-3-26

BRIDGE NO. 5662

DRAWING NO. 20452