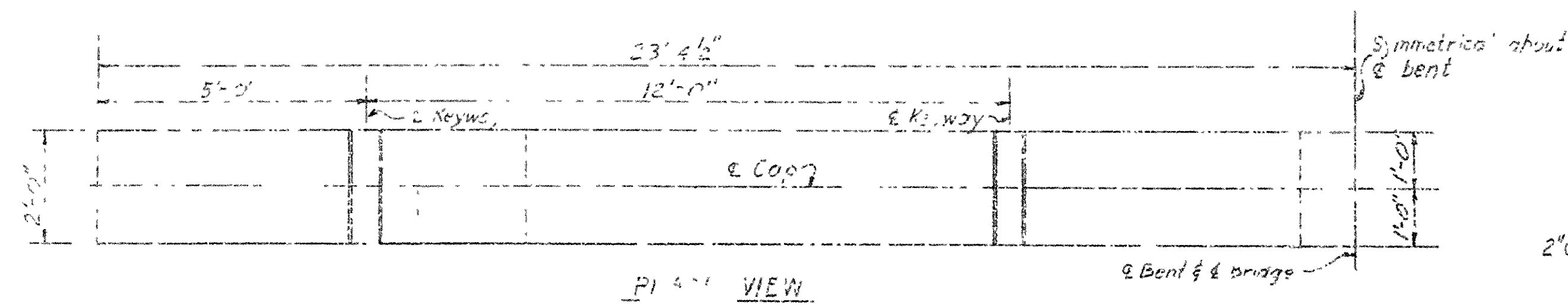
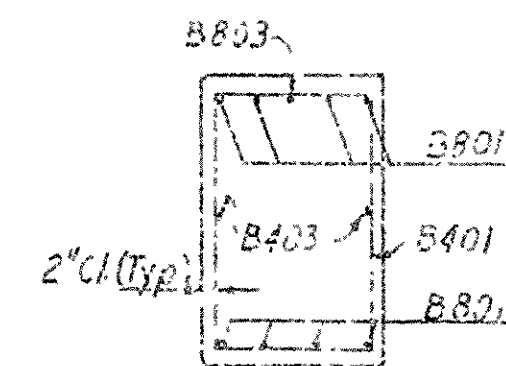


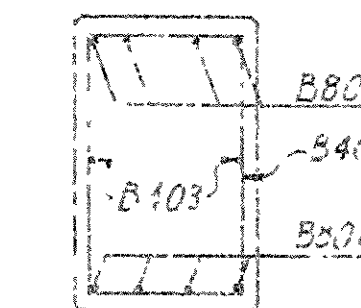
DATE RECEIVED	P. 2	DATE FORWARDED	DATE RECEIVED	FEB. 27-68	STATE	FED. AID PROJ. NO.	SHEET NO.	TOTAL SHEETS
				6	ARK.			
				JOB NO	4644	28	77	
① 662 - INT. BENTS - 20450								



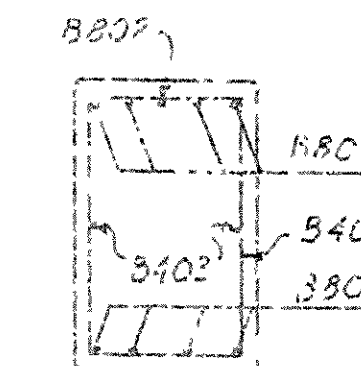
PI 4-1 VIEW



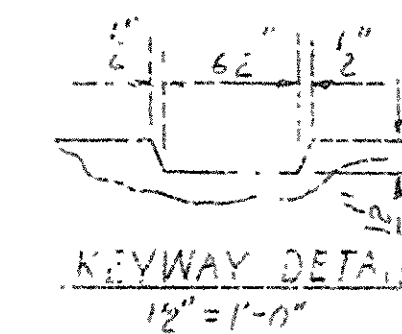
SECTION A-A



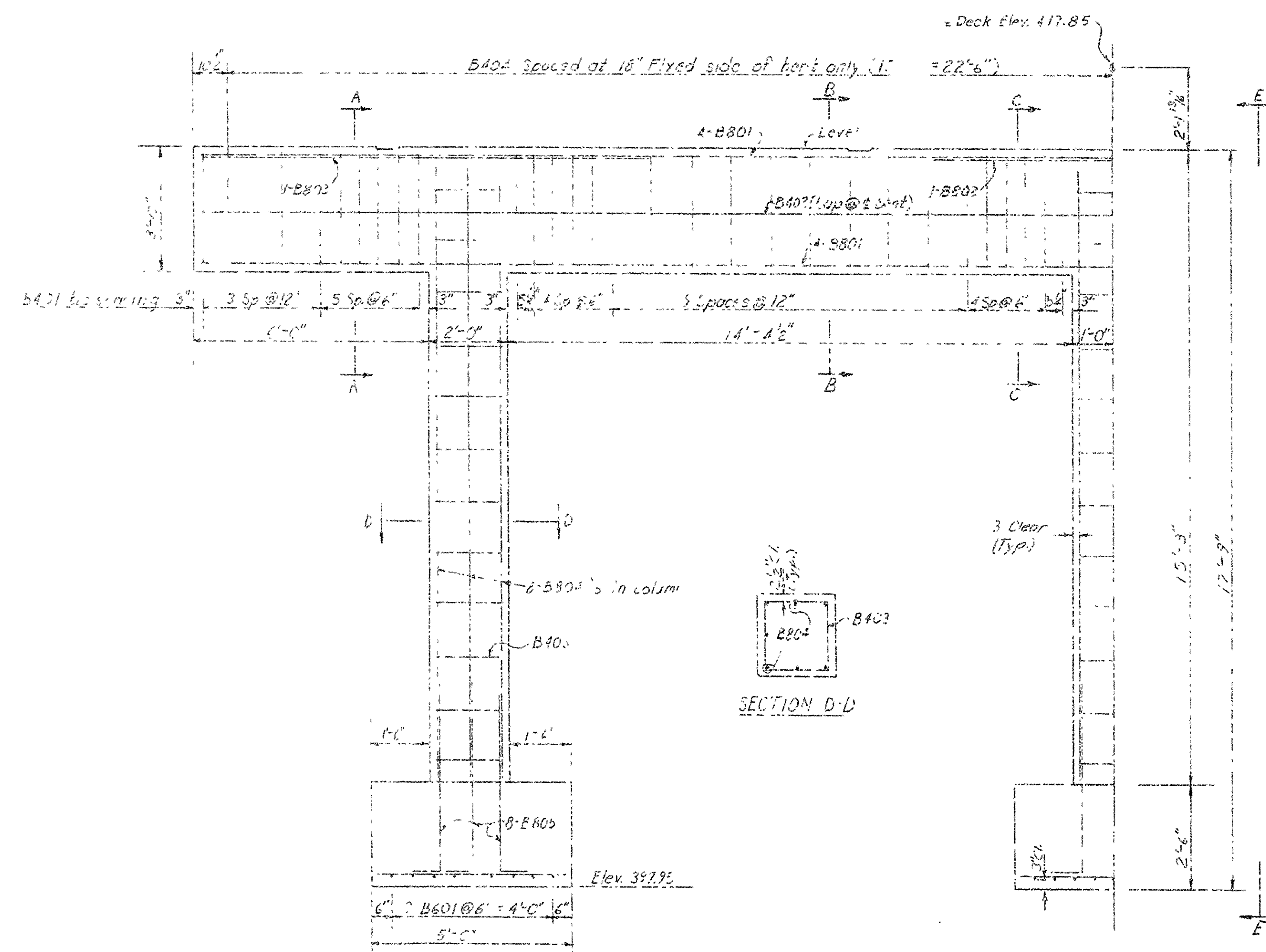
SECTION B-B



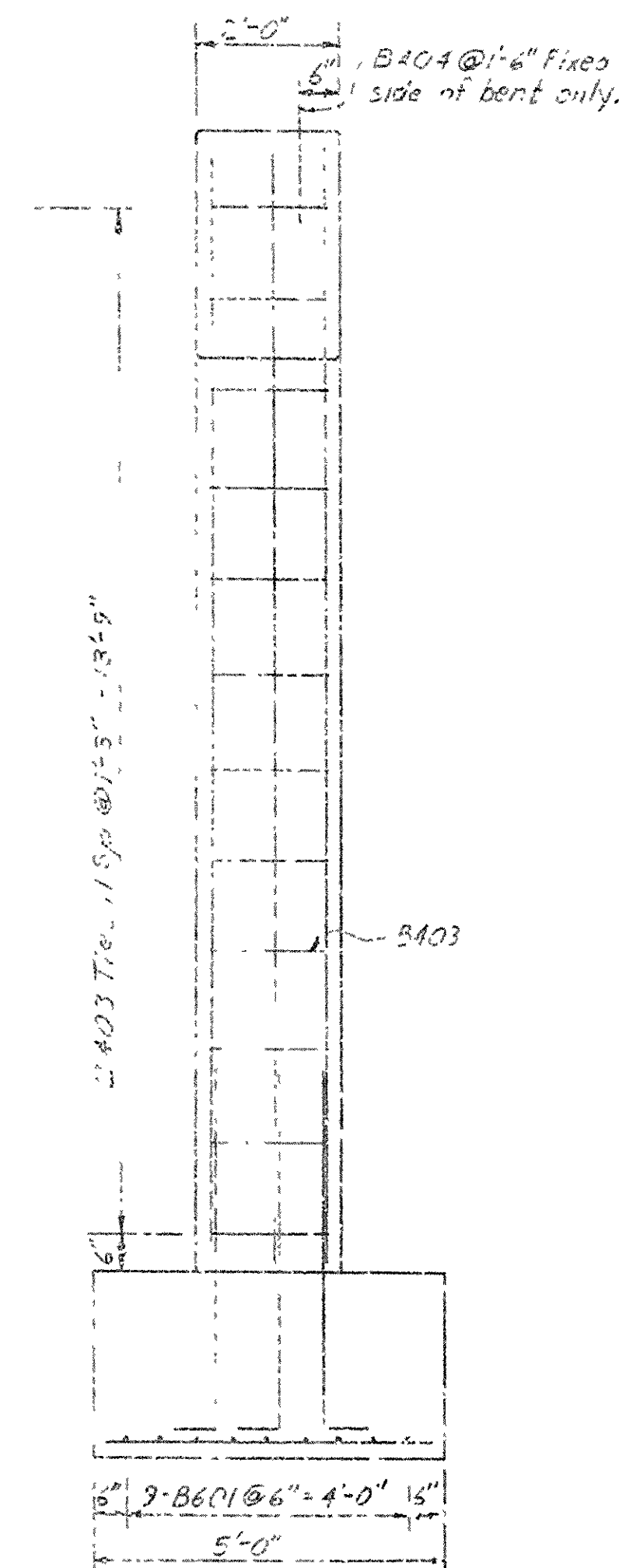
SECTION C-C



KEYWAY DETAIL  
1/2" = 1'-0"



ELEVATION VIEW



VIEW E-E

BAR LIST

MARK	NO REQ'D	LENGTH	PIN DIA.	BENDING DIAGRAM
B401	52	1'-8"	2"	
B402	4	2'-6"	5/8"	
B403	36	1'-2"	2"	
B404	#	1'-4"	5/8"	
B405	54	4'-8"	5/8"	
B501	8	1'-5"	5/8"	
B502	1	2'-2"	5/8"	
B503	1	1'-7"	5/8"	
B504	24	1'-9"	5/8"	
B505	23	6'-1"	6"	

Dimensions are in feet and inches of bars

1 sent to use of 3402  
 sent to use of 3404.

Notes:  
Design specification: ASTM C 940 Portland Cement Mortar for  
masonry. Strength: 1975 and interim specification  
Live load: 4500  
Method of Design: Long Factor  
Concrete: All concrete shall be Class S with a minimum  
28 day compressive strength of 3500 psi.  
Reinforcing steel: Reinforcing steel shall conform to  
ASTM A615 or A617, Grade 60 (yield strength =  
60,000 p.s.i.)  
All exposed surfaces to be chamfered  $\frac{3}{4}$ " unless  
otherwise noted.

DETAILS OF RENT 2 OR 3  
MILL CREEK  
SOUTH "Y" ST. - CARNALL ST.  
SEBASTIAN COUNTY

ROUTE 59 SEC. 8  
ARKANSAS STATE HIGHWAY COMMISSION  
LITTLE ROCK, ARK.

DRAWN BY: JGT DATE: 7-15-72  
 CHECKED BY: JGT DATE: 9-1-72 SCALE: 1/2" = 1'-0" or 7/8" = 1'-0"  
 DESIGNED BY: JGT DATE: 4-2-72

BRIDGE NO. 5662 DRAWING NO. 20450