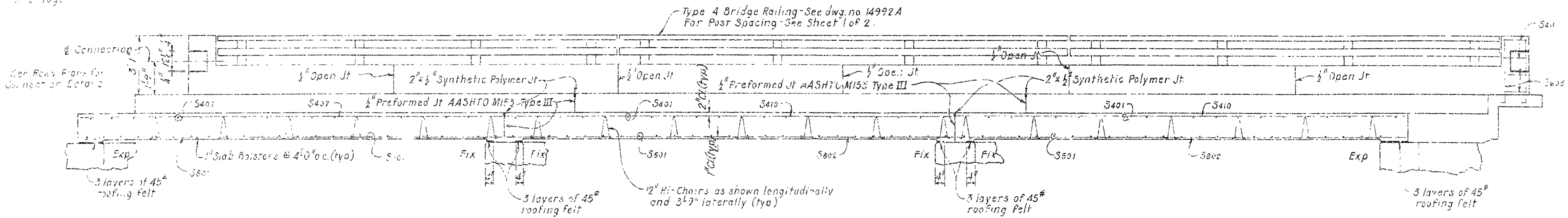
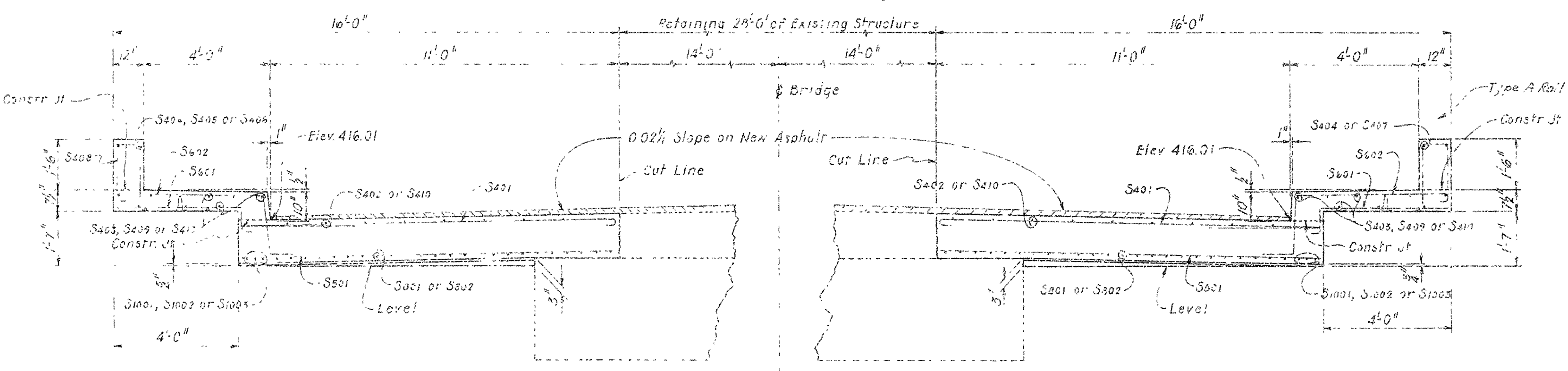


DATE REVISED	DATE FILMED	DATE REVISED	DATE FILMED	FED. ROAD NO.	STATE	FED. AID PROJ. NO.	STREET NO.	TOTAL SHEETS
				6	ARK			
							4660	23
							351A	SPAN 18814

See Type 2 Bridge Name Plate on
Right Hand Side of Post at Beginning
of Bridge



SECTION A-A
1/8" = 1'-0"

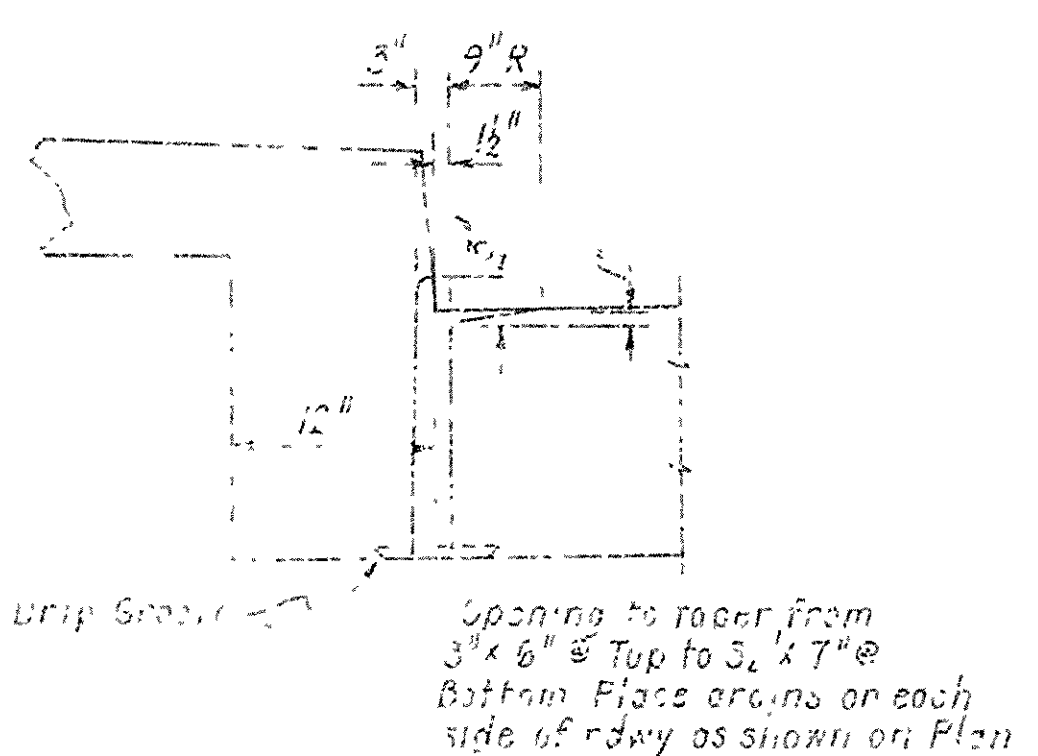


TYPICAL ROADWAY SECTION
1/8" = 1'-0"

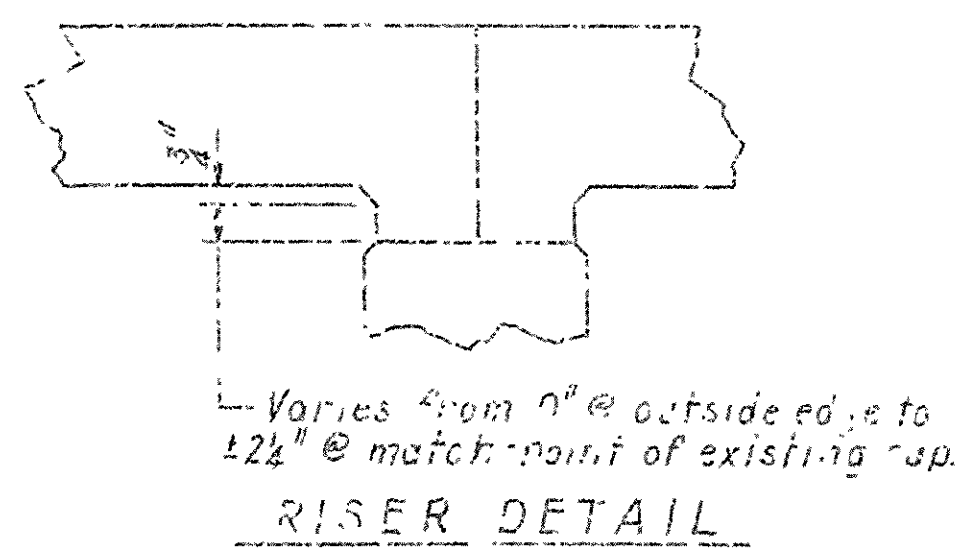
BAR LIST

MK	No of Bars Required			Length	Pin Dia	Bending Diagram
	Span 1	Span 2	Span 3			
S1001	6	-	-	24'-1"	Str	
S1002	-	6	-	24'-7"	Str	
S1003	-	-	6	25'-1"	Str	
S601	48	-	-	23'-7"	Str	
S602	-	48	48	23'-7"	Str	
S603	42	42	44	7'-10"	Str	
S604	14	113	116	9'-5"	Str	
S605	14	-	14	4'-2"	Str	
S606	38	40	40	14'-5"	Str	
S1007	18	-	-	23'-7"	Str	
S608	18	-	-	24'-1"	Str	
S609	4	8	6	12'-1"	Str	
S610	2	-	-	10'-6"	Str	
S611	-	-	2	11'-7"	Str	
S612	2	-	-	10'-7"	Str	
S613	52	56	54	5'-9"	Str	
S614	-	-	15	25'-1"	Str	
S615	-	36	16	24'-6"	Str	
S616	5	-	8	3'-11"	Str	
S617	48	50	50	13'-6"	Str	

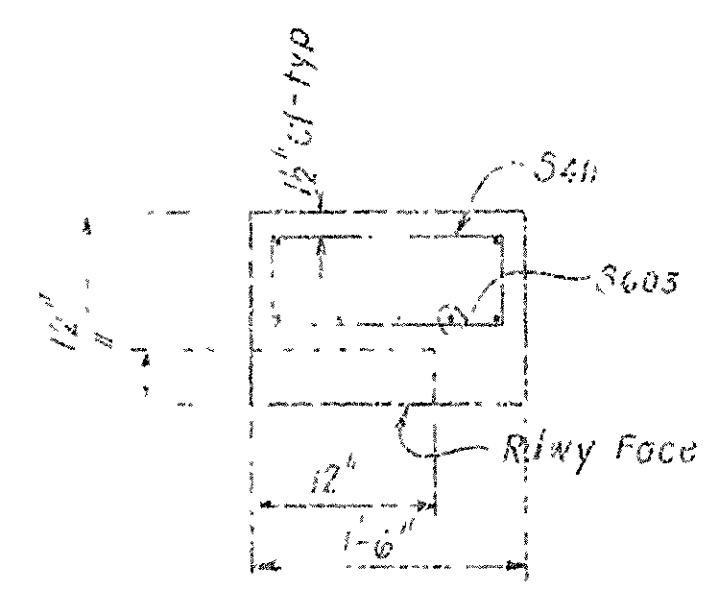
Dimensions are for cut of bars



RAIN DETAIL
NTS



RISER DETAIL
NTS



END POST DETAIL (TYP)
NTS

SHEET 2 OF 2
DETAILS OF WIDENING SPANS
LITTLE MASSARD CREEK
MASSARD-EAST
SEBASTIAN COUNTY
ROUTE 22 SEC. 1
ARKANSAS STATE HIGHWAY COMMISSION
LITTLE ROCK, ARK.
DRAWN BY: H. H. H. DATE: 6-20-74
TRACED BY: DATE: SCALE: As Shown
CHECKED BY: DATE: 6-20-74
BRIDGE NO. 351A DRAWING NO. 13814