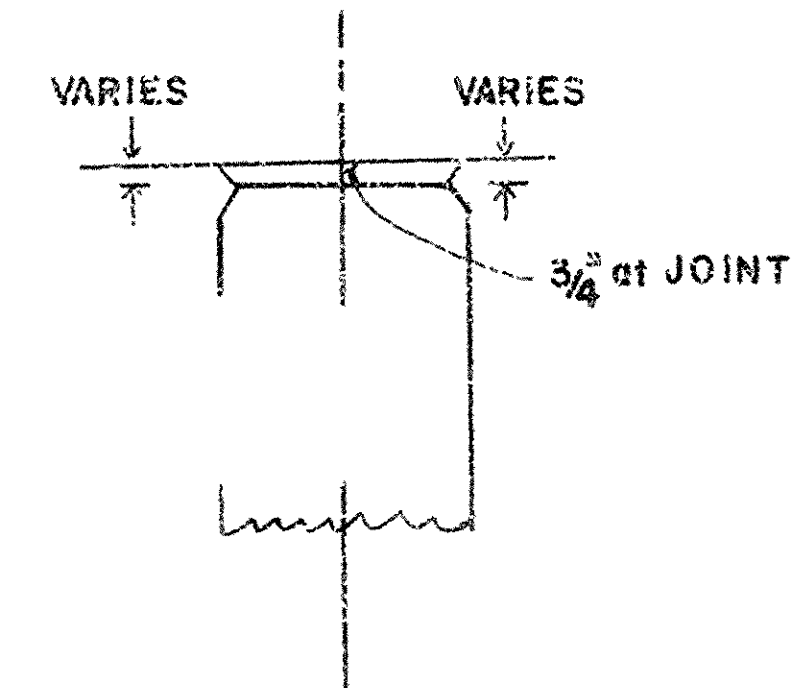
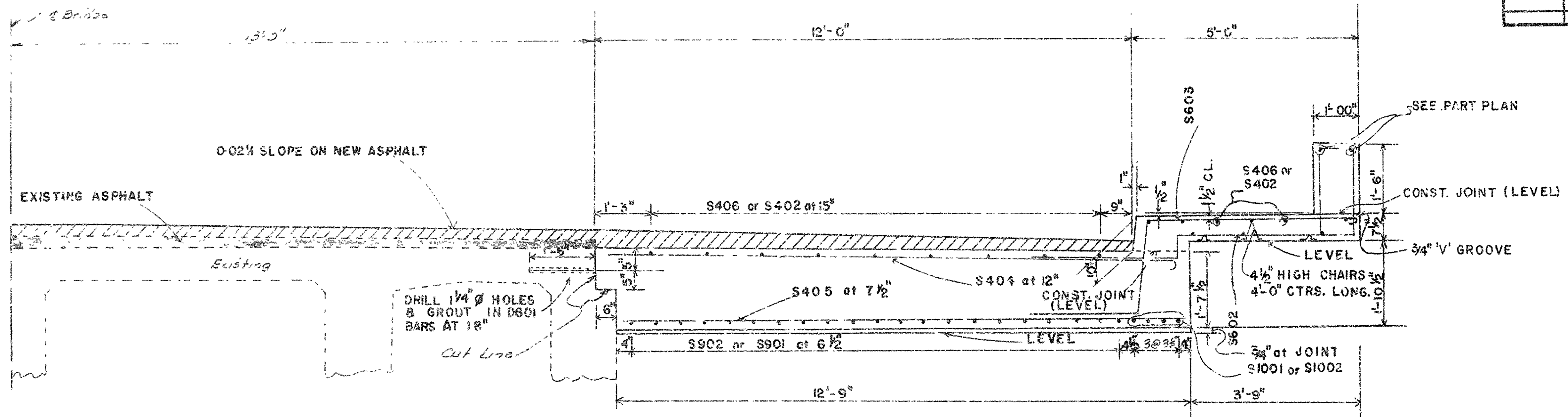


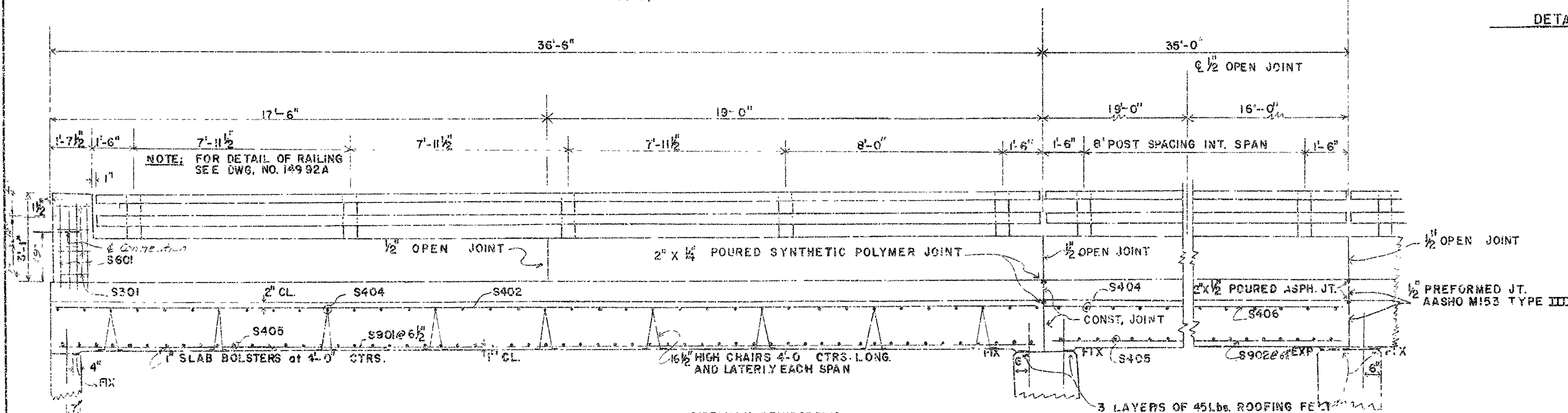
DATE REVISED	DATE FILMED	DATE REVISED	DATE FILMED	FED. ROAD DIST. NO.	STATE	FED. AID PROJ. NO.	SHEET NO.	TOTAL SHEETS
				5	ARK.		29	73
				350A	SP445 1982			



NOTE: FOR DETAIL OF GUARD RAIL CONNECTIONS
SEE ROADWAY PLANS

HALF SECTION THRU ROADWAY
(3/4" = 1')

DETAIL AT INTERIOR BENT

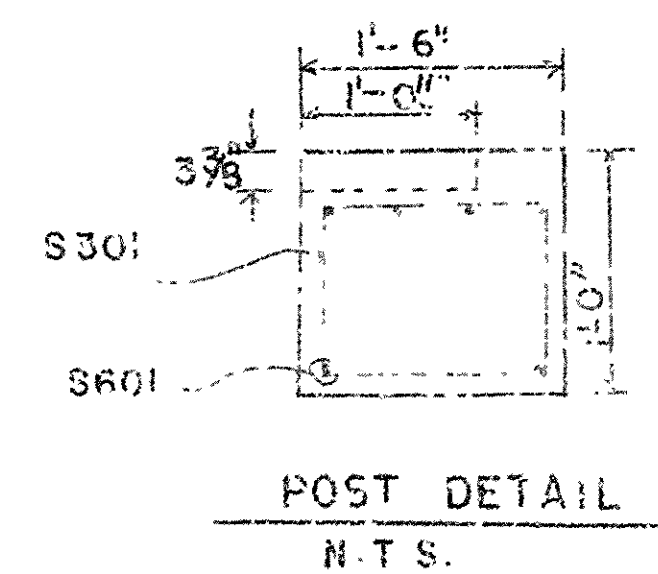


SLAB REINFORCING
LONGITUDINAL. S902 at 6 1/2" BOTTOM INT.
S901 at 6 1/2" BOTTOM END
S402 at 15" TOP END
TRANSVERSE. S405 at 7 1/2" BOTTOM
S404 at 12" TOP

SIDEWALK REINFORCING
LONGITUDINAL. S402 IN TOP & BOTTOM END
S406 IN TOP & BOTTOM INT.
TRANSVERSE. S602 at 14"
S603 at 7"

NOTE: FOR GENERAL NOTES SEE DRAWING NO. 18819

SECTION B 1/2" = 1'



SHEET 2 OF 2
DETAILS OF WIDENING SPANS
MASSARD CREEK
MASSARD - EAST
SEBASTIAN COUNTY
ROUTE 22 SEC. 1
ARKANSAS STATE HIGHWAY COMMISSION
LITTLE ROCK, ARK.
DRAWN BY: C.P.P. DATE: 11-9-73
CHECKED BY: S.D.F. DATE: 12-7-73
DESIGNED BY: S.D.F. DATE: 11-7-73
BRIDGE NO. 350 A DRAWING NO. 18820