

DATE REVISED	DATE FILMED	DATE REVISED	DATE FILMED	FED. ROAD DIST. NO.	STATE	FED. AID PROJ. NO.	SHEET NO.	TOTAL SHEETS
				8	ARK.			
				JOB NO.	4660	28	73	
					350A	SPANS	1889	

GENERAL NOTES

THE WORK CONTEMPLATED CONSISTS OF WIDENING THE EXISTING BRIDGE ON BOTH SIDES OF THE ROADWAY. FOR REQUIREMENTS IN CONDUCTING THE WORK, SEE JOB SPECIAL PROVISION "REMODELING EXISTING BRIDGE STRUCTURE". ALL DIMENSIONS RELATING TO EXISTING BRIDGE ARE TO BE VERIFIED IN THE FIELD AND THE CONTRACTOR SHALL BE RESPONSIBLE FOR ADJUSTING WIDENING TO EXISTING STRUCTURE.

ALL CONCRETE TO BE CLASS S. ALL EXPOSED CORNERS TO HAVE 3/4" CHAMFER UNLESS OTHERWISE NOTED.

REINFORCING STEEL TO BE ASTM A615, GRADE 40. REINFORCING STEEL IS TO BE HELD IN PLACE BY MEANS OF STEEL WIRE SUPPORTS SUFFICIENT IN NUMBER AND SIZE TO PROPERLY SUPPORT THE STEEL IN THE FORMS. THESE SHOP LISTS AND BENDING DIAGRAM OF REINFORCING STEEL AND WIRE SUPPORTS MUST BE SUBMITTED AND APPROVAL SECURED BEFORE FABRICATION IS BEGUN.

ROOFING FELT, PREFORMED JOINT, AND POURED ASPHALT TO BE MEASURED AND PAID FOR AS CLASS S CONCRETE. ALSO POURED SYNTHETIC POLYMER JOINT TO BE MEASURED AND PAID FOR AS CLASS S CONCRETE. SPECIFICATIONS: ARKANSAS STATE HIGHWAY COMMISSION STANDARD SPECIFICATIONS FOR HIGHWAY CONSTRUCTION, EDITION OF 1972, AND APPLICABLE SPECIAL PROVISIONS.

DESIGN SPECIFICATIONS: AASHTO STANDARD SPECIFICATIONS FOR HIGHWAY BRIDGES, 1973 WITH 1974 INTERIM SPECIFICATIONS.  
LOADING: HS20 (NEW CONSTRUCTION)  
LOAD DISTRIBUTION TO SLAB:  
DEAD LOAD - 24 LBS. PER SQ. FT.  
LIVE LOAD - 16" WHEELS PER FT. OF WIDTH PLUS 30% IMPACT.

CONCRETE: ALL CONCRETE SHALL BE CLASS S WITH A MINIMUM 28 DAY COMPRESSIVE STRENGTH  $f'_c = 3500$  PSI

REINFORCING STEEL: REINFORCING STEEL SHALL CONFORM TO ASTM A615, GRADE 60 (YIELD STRENGTH = 60,000 PSI)

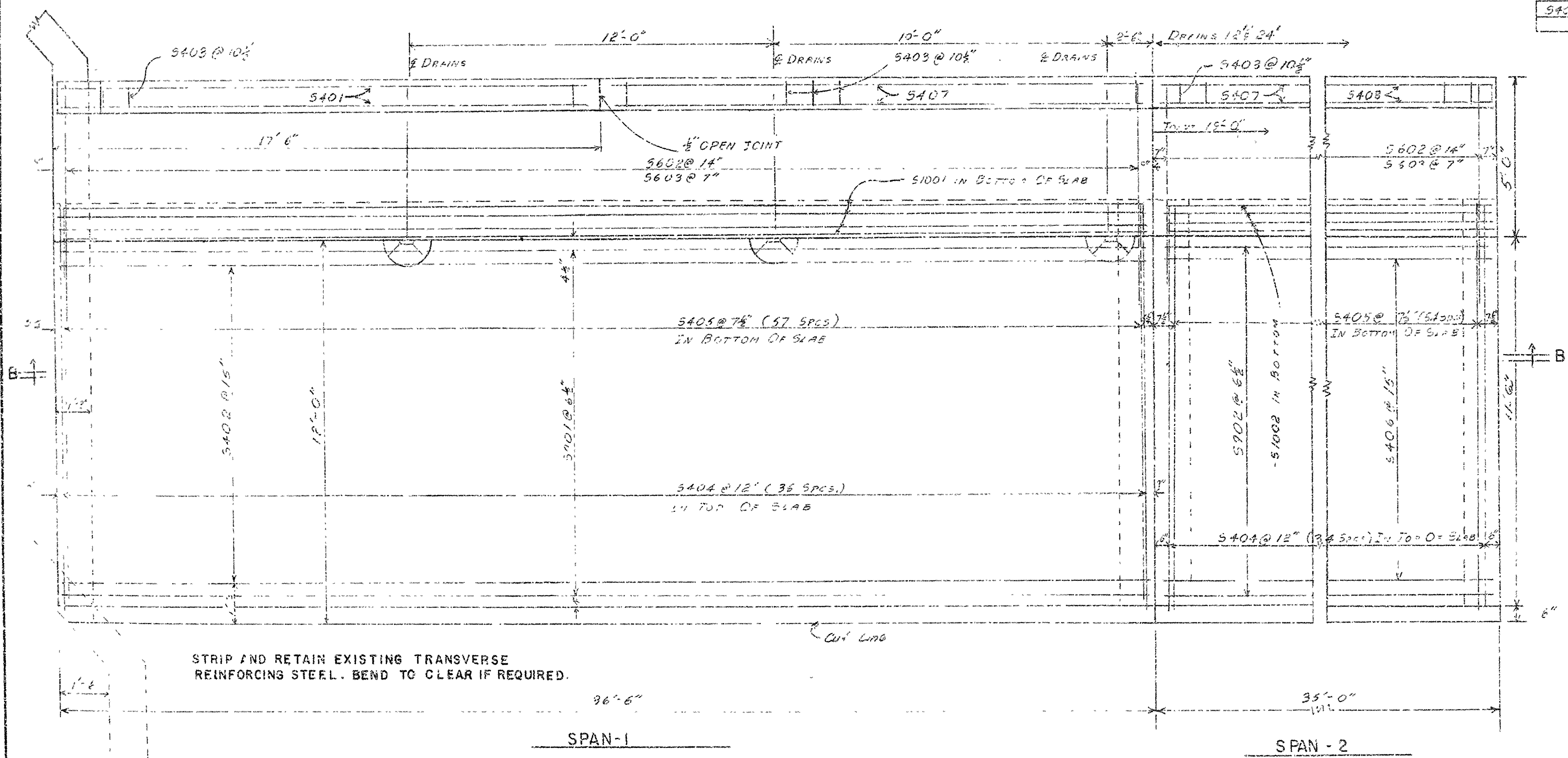
METHOD OF DESIGN: LOAD FACTOR

BAR LIST FOR SPANS

MARK	NO. REOD.	END.	INT.	LENGTH	A	B	PIN DIA.	BENDING DIAGRAM
5401	8	---	---	3'-10"	6"	1'-3"	1 1/2"	
5401	4	---	---	17'-8"	---	---	---	
5402	36	---	---	36'-0"	---	---	---	
5403	52	82	---	5'-9"	8"	1'-10 1/2"	2"	
5404	24	70	---	13'-0"	---	12'-6"	4"	3"
5405	112	---	---	12'-3"	---	---	---	---
5406	---	36	---	34'-6"	---	---	---	---
5401	12	---	---	3'-6"	---	---	---	---
5405	62	60	---	7'-7 1/2"	3'-3"	7"	3 1/2"	
5409	122	118	---	1'-6"	1'-6"	6"	1 1/2"	
5401	42	---	---	36'-0"	---	---	---	
5402	---	42	---	34'-8"	---	---	---	
51001	8	---	---	36'-0"	---	---	---	
51002	---	8	---	34'-6"	---	---	---	
5407	4	---	---	18'-8"	---	---	---	
5408	---	4	---	15'-8"	---	---	---	

OPENING TO TAPER FROM 3 1/2" AT TOP TO 3 1/2" AT BOTTOM. PLACE DRAINS ON EACH SIDE OF ROADWAY AS SHOWN.

DRAIN DETAIL  
N.T.S.



SHEET 1 OF 2  
DETAIL OF WIDENING SPANS  
MASSARD CREEK  
MASSARD - EAST  
SEBASTIAN COUNTY  
ROUTE 22 SEC. 1  
ARKANSAS STATE HIGHWAY COMMISSION  
LITTLE ROCK, ARK.

DRAWN BY: G.P.P. DATE: 11-7-78  
CHECKED BY: G.P.P. DATE: 12-7-78  
DESIGNED BY: G.P.P. DATE: 11-7-78  
BRIDGE NO 350 A DRAWING NO. 18819