

DATE REVISION	DATE FILMED	DATE REVISION	DATE FILMED	ROAD NO.	STATE	REG. AID PROJ. NO.	SHEET NO.	TOTAL SHEETS
				5	ARK.			
						JOB NO. 8462	27	73
						350A INT. BENT		

# BAR LIST FOR INT. BENT

MARK	NO. REQD.	LENGTH	A	B	PIN DIA.	BENDING DIAGRAM
B401	8	3'-0"			STR.	
B402	8	1'-9"			STR.	
B403	60	7'-2"	1'-8"	1'-8"	2"	
B501	20	10'-0"	2'-8"	2'-0"	2 1/2"	
B401	32	4'-10"	2'-6"	6"	4 1/2"	
B602	10	11'-9"			STR.	
B701	18	1'-5 1/2"	12'-0"	7"	5 1/2"	
B901	16	18'-3"			STR.	
B902	16	6'-9"	5'-6"	10"	9"	
B603	14	4'-1 1/2"	7'-9"	6"	4 1/2"	
D601	8	3'-0"			S.P.	

**B902**

**DIMENSIONS OF BARS**

**ARE OUT TO CUT**

# ELEVATIONS

	INT. BENT-1		INT. BENT-2	
	LT.	RT.	LT.	RT.
A	385-40	385-24	385-13	385-07
B	381-63	381-63	381-63	381-63
C	401-30	401-21	401-02	401-01
D	404-32	404-32	404-32	404-32

# GENERAL NOTES

THE WORK CONTEMPLATED CONSISTS OF WIDENING THE EXISTING BRIDGE ON BOTH SIDES OF THE ROADWAY. FOR REQUIREMENTS IN CONDUCTING THE WORK, SEE JOB SPECIAL PROVISION "REMODELING EXISTING BRIDGE STRUCTURE". ALL DIMENSIONS RELATING TO EXISTING BRIDGE ARE TO BE VERIFIED IN THE FIELD AND THE CONTRACTOR SHALL BE RESPONSIBLE FOR ADJUSTING WIDENING TO EXISTING STRUCTURE.

ALL CONCRETE TO BE CLASS S. ALL EXPOSED CORNERS TO HAVE 3/4" CHAMFER UNLESS OTHERWISE NOTED.

REINFORCING STEEL TO BE ASTM A615, GRADE 40. REINFORCING STEEL IS TO BE HELD IN PLACE BY MEANS OF STEEL WIRE SUPPORTS SUFFICIENT IN NUMBER AND SIZE TO PROPERLY SUPPORT THE STEEL IN THE FORMS. THESE SHOP LISTS AND BENDING DIAGRAM OF REINFORCING STEEL AND WIRE SUPPORTS MUST BE SUBMITTED AND APPROVAL SECURED BEFORE FABRICATION IS BEGUN.

DESIGN SPECIFICATIONS: AASHTO STANDARD SPECIFICATIONS FOR HIGHWAY BRIDGES, 1973 WITH 1974 INTERIM SPECIFICATIONS.

LIVE LOAD: HS20 (NEW CONSTRUCTION)

METHOD OF DESIGN: SERVICE LOAD

CONCRETE: ALL CONCRETE SHALL BE CLASS S WITH A MINIMUM 28 DAY COMPRESSIVE STRENGTH  $f'_c = 3000$  PSI.

REINFORCING STEEL: REINFORCING STEEL SHALL CONFORM TO ASTM A615, GRADE 40 (YIELD STRENGTH = 40,000 PSI)

# DETAIL OF WIDENING INT. BENT

MASSARD CREEK  
MASSARD- EAST

SEBASTIAN COUNTY

ROUTE 22 SEC. I

ARKANSAS STATE HIGHWAY COMMISSION

LITTLE ROCK, ARK.

DRAWN BY: J. C. L. DATE: 11-7-73

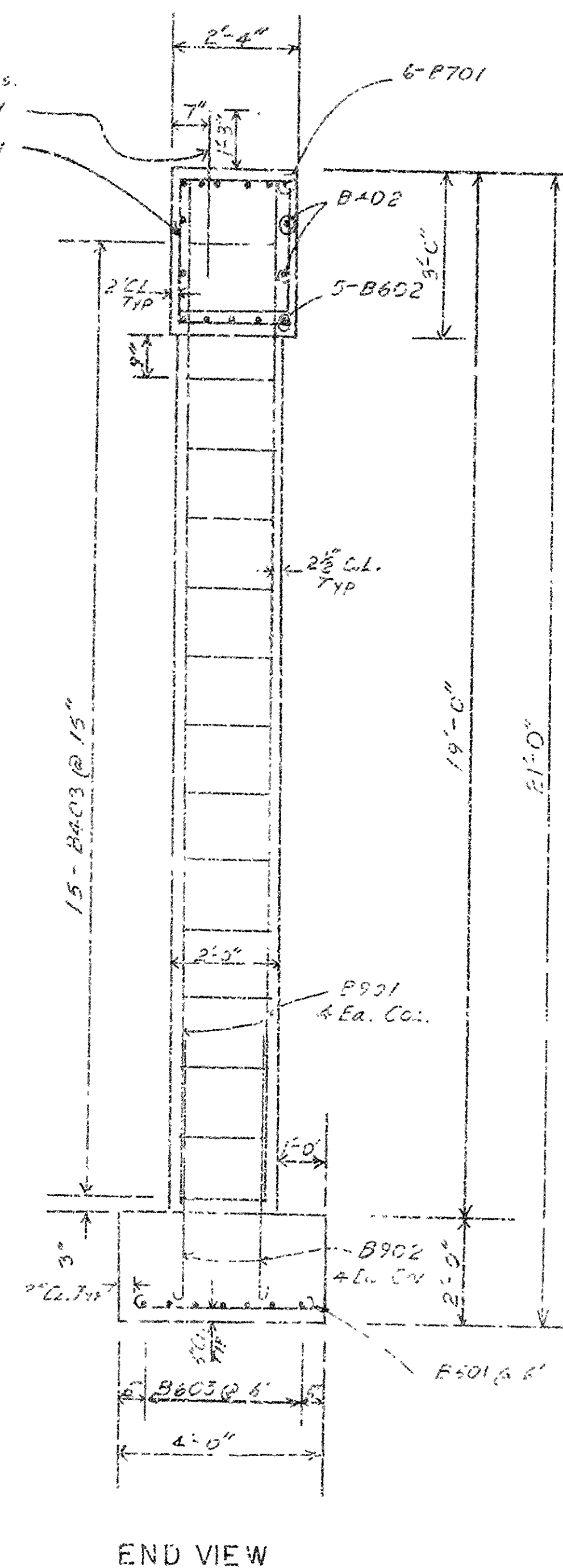
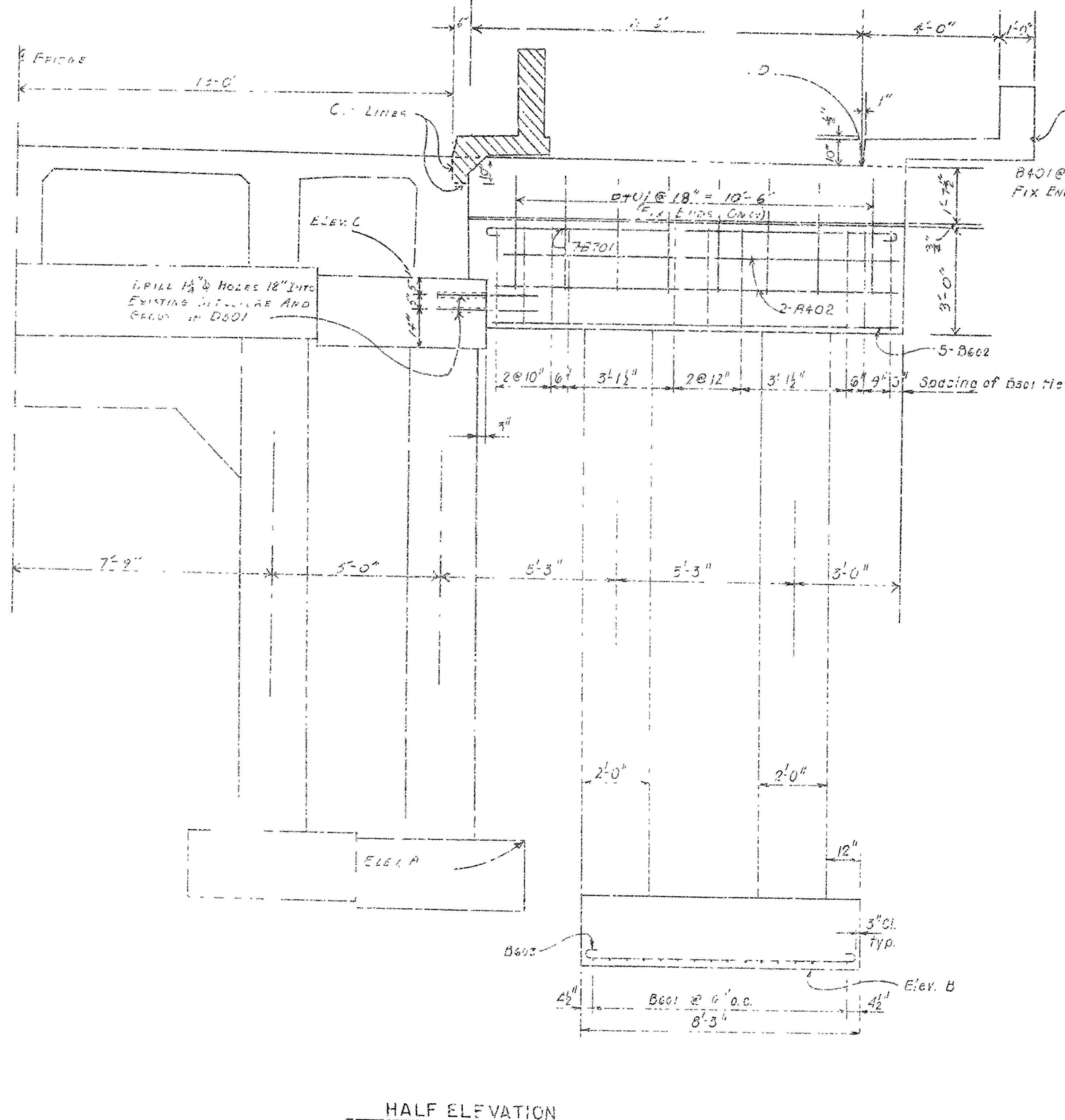
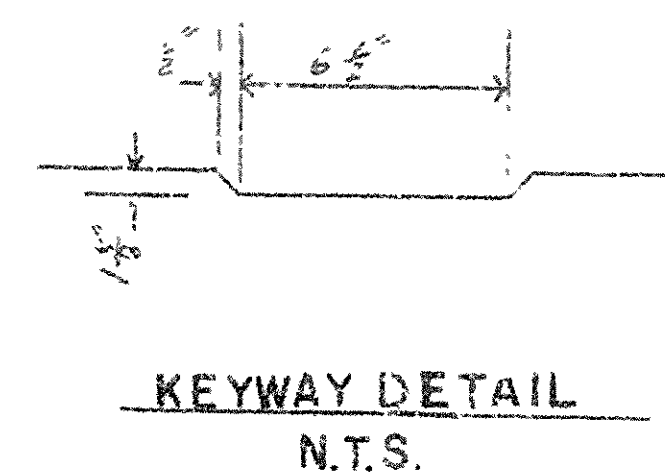
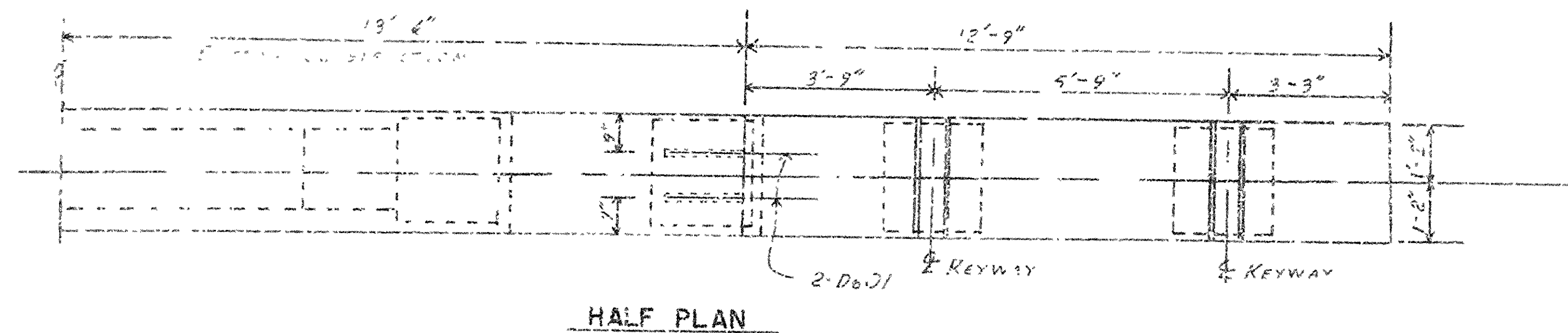
CHECKED BY: L. O. F. DATE: 12-7-73

DESIGNED BY: C. P. J. DATE: 11-1-73

SCALE: 1/2" = 1'-0"

BRIDGE NO. 350A

DRAWING NO. 18818



# HALF ELEVATION

# END VIEW