



Latitude:33.95513, Longitude:-93.44365

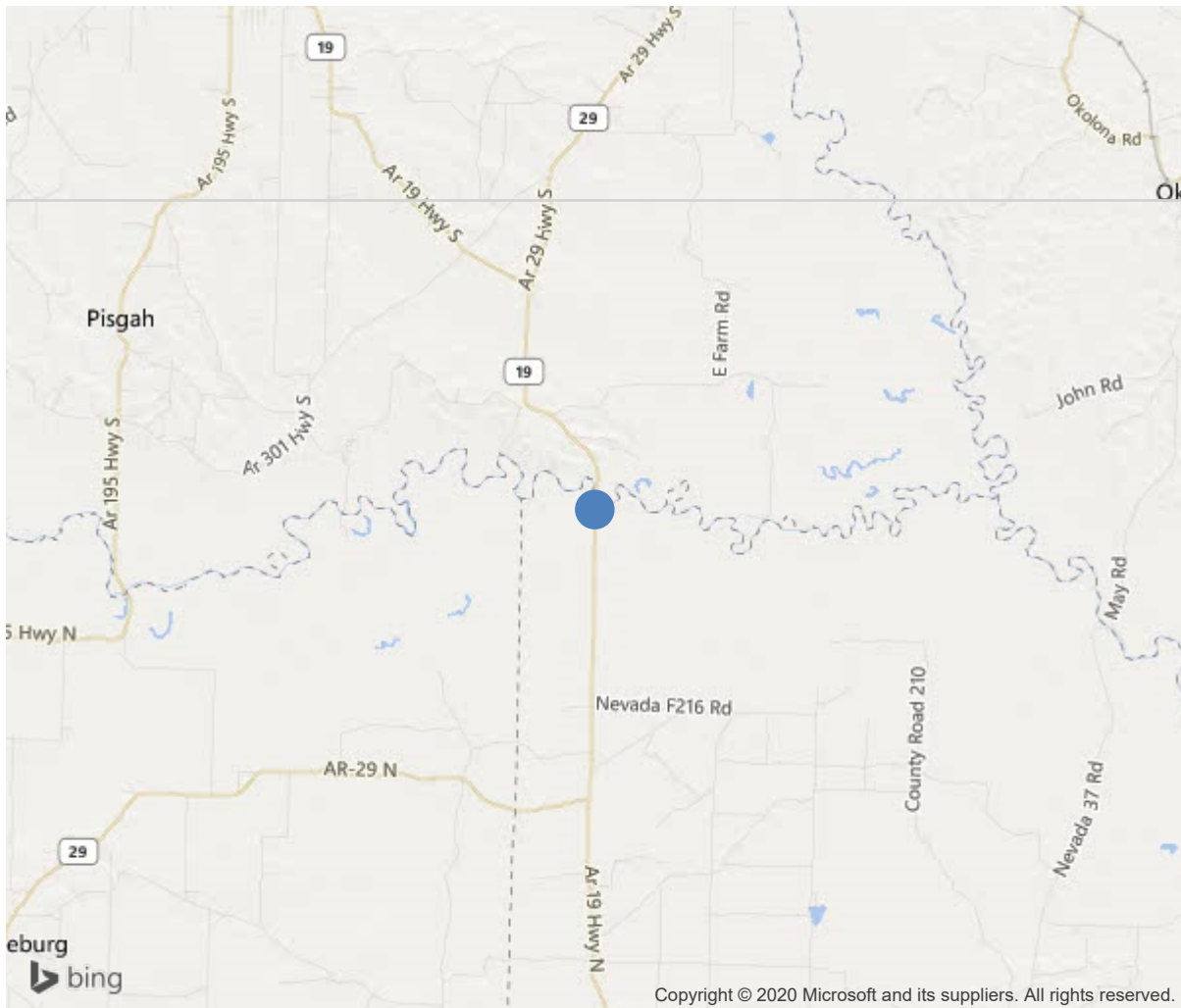
Route:19 Section:05 Log:11.46

Arnold Road ID:50x19x5xA, Arnold Log mile:11.461

District 03, Nevada County

Owner: 1-State Highway Agency

.04 MI S OF PIKE CO LINE



33.95513, -93.44365



**Bridge #03095(Routine)**  
**SH 19-SEC.05-11.46 over LITTLE MISSOURI RIVER**

**Location: .04 MI S OF PIKE CO LINE**

**Team Lead: Charlie Rogers Inspection Date: September 16, 2019**

IDENTIFICATION	
(1) State Names	Arkansas
(8) Structure Number	03095
(5) Inventory Route	19
(2) Highway Agency District	03
(3) County Code	99-Nevada County, Arkansas
(4) Place Code	0
(6) Features Intersected	LITTLE MISSOURI RIVER
(7) Facility Carried	SH 19-SEC.05-11.46
(9) Location	.04 MI S OF PIKE CO LINE
(11) Mile Point	11.46 mi
(12) Base Highway Network	No
(13) LRS Inventory Rte & Subrte	0000
(16) Latitude	33.95513
(17) Longitude	-93.44365
(98) Border Bridge State Code	
(99) Border Bridge Structure No.	
STRUCTURE TYPE AND MATERIAL	
(43) Main Structure Type	32
Material	3-Steel
Type	2-Stringer/Multi-beam or girder
(44) Approach Structure Type	32
Material	3-Steel
Type	2-Stringer/Multi-beam or girder
(45) No. of Spans in Main Unit	3
(46) No. of Approach Spans	6
(107) Deck Structure Type	1-Concrete Cast-in-Place
(108) Wearing Surface/Protective System	
Type of Wearing Surface	1-Monolithic Concrete (concur
Type of Membrane	0-None
Type of Deck Protection	0-None
AGE AND SERVICE	
(27) Year Built	1958
(106) Year Reconstructed	0
(42) Type of Service	15
On	1-Highway
Under	5-Waterway
(28) Lane	
On	2
Under	0
(29) Average Daily Traffic	840
(30) Year of ADT	2018
(109) Truck ADT	31 %
(19) Bypass, Detour Length	28 mi
GEOMETRIC DATA	
(48) Length of Maximum Span	75 ft
(49) Structure Length	502 ft
(50) Curb or Sidewalk Width	
Left	1 ft
Right	1 ft
(51) Bridge Roadway Width Curb to Curb	24 ft
(52) Deck Width Out to Out	28.5 ft
(32) Approach Roadway Width (W/Shoulders)	40 ft
(33) Bridge Median	0-No median
(34) Skew	0 Deg
(35) Structure Flared	No flare
(10) Inventory Route Min Vert Clear	99.99 ft
(47) Inventory Route Total Horiz Clear	26.2 ft
(53) Min Vert Clear Over Bridge Rdwy	99.99 ft
(54) Min Vert Underclear	0 ft
Ref:	
(55) Min Lat Underclear RT	99.9 ft
Ref:	
(56) Min Lat Underclear LT	0 ft
NAVIGATION DATA	
(38) Navigation Control	0-No navigation control on water
(111) Pier Protection	1-Navigation protection not requ
(39) Navigation Vertical Clearance	0 ft
(116) Vert-Lift Bridge Nav Min Vert Clear	0 ft
(40) Navigation Horizontal Clearance	0 ft

CLASSIFICATION	
(112) NBIS Bridge Length	Y
(104) Highway System	0
(26) Functional Class	6-Rural Minor Arterial
(100) Defense Highway	0-The inventory route is not a S
(101) Parallel Structure	N-No parallel structure exists.
(102) Direction of Traffic	2 - way traffic
(103) Temporary Structure	
(105) Federal Lands Highways	0-N/A
(110) Designated National Network	0-The inventory route is not part of th
(20) Toll	3-On free road. The structure is toll-
(21) Maintain	1-State Highway Agency
(22) Owner	1-State Highway Agency
(37) Historical Significance	5-Bridge is not eligible for the NRHP
CONDITION	
(58) Deck	4
(59) Superstructure	4
(60) Substructure	7
(61) Channel & Channel Protection	7
(62) Culverts	N
LOAD RATING AND POSTING	
(31) Design Load	2-M 13.5 / H 15
(63) Operating Rating Method	1
(64) Operating Rating	
Type	1-Load Factor(LF)
Rating	43
(65) Inventory Rating Method	1-Load Factor(LF)
(66) Inventory Rating	
Type	3
Rating	26
(70) Bridge Posting	5-Equal to or above legal loads
(41) Structure Open/Posted/Closed	A-Open, no restriction
APPRAISAL	
(67) Structural Evaluation	4
(68) Deck Geometry	4
(69) Clearances, Vertical/Horizontal	N
(71) Waterway Adequacy	7
(72) Approach Roadway Alignment	8
(36) Traffic Safety Features	1111
A) Bridge Railings	1-Inspected feature meets currently a
B) Transitions	1-Inspected feature meets currently a
C) Approach Guardrail	1-Inspected feature meets currently a
D) Approach Guardrail Ends	1-Inspected feature meets currently a
(113) Scour Critical Bridges	5-Bridge foundations determined to be
PROPOSED IMPROVEMENTS	
(75) Type of Work	Bridge rehabilitation because of general structure deteriora
(76) Length of Structure Improvement	502 ft
(94) Bridge Improvement Cost	\$ 0
(95) Roadway Improvement Cost	\$ 0
(96) Total Project Cost	\$ 641
(97) Year of Improvement Cost Estimate	2004
(114) Future ADT	1061
(115) Year of Future ADT	2028
INSPECTIONS	
(90) Inspection Date	201909
(91) Frequency	24 Months
(92) Critical Feature Inspection	Done Freq. (Mon) Date
A: Fracture Critical Detail	No 24
B: Underwater Inspection	No 0
C: Other Special Inspection	Yes 0 201809

SUFFICIENCY RATING	41.3
STATUS (SD/FO/None)	Structurally Deficient



Bridge #03095(Routine)

SH 19-SEC.05-11.46 over LITTLE MISSOURI RIVER

Location: .04 MI S OF PIKE CO LINE

Team Lead: Charlie Rogers, Inspection Date: September 16, 2019

ELEM	DESCRIPTION	UNITS	TOTAL	CS1	CS2	CS3	CS4
12	Reinforced Concrete Deck	SF	14307	1920	540	11847	0
1080	Delamination/Spall/Patched Area	SF	926	0	0	926	0
1130	Cracking (RC and Other)	SF	90	0	90	0	0
(12)	2019...926 SF patched area on deck.						
107	Steel Open Girder/Beam	LF	2500	2497	2	0	1
515	Steel Protective Coating	SF	21454	21454	0	0	0
161	Steel Pin, Pin and Hanger Assembly	EA	10	0	10	0	0
1000	Corrosion	EA	10	0	10	0	0
(161)	SEE P&H FORM						
205	Reinforced Concrete Column	EA	2	2	0	0	0
215	Reinforced Concrete Abutment	LF	66	66	0	0	0
226	Prestressed concrete piles	EA	35	32	3	0	0
1080	Delamination/Spall/Patched Area	EA	3	0	3	0	0
(226)	1080- 3 pile in approach spans have spalls						
234	Reinforced Concrete Pier Cap	LF	246	246	0	0	0
303	Assembly Joint with Seal	LF	240	240	0	0	0
311	Movable Bearing	EA	35	15	20	0	0
1000	Corrosion	EA	5	0	5	0	0
(311)	bearings showing signs of mild corrosion with small amount of section loss						
313	Fixed Bearing	EA	45	20	25	0	0
1000	Corrosion	EA	5	0	5	0	0
(313)	bearings showing signs of mild corrosion with small amount of section loss						
330	Metal Bridge Railing	LF	1104	0	1104	0	0
1000	Corrosion	LF	150	0	150	0	0



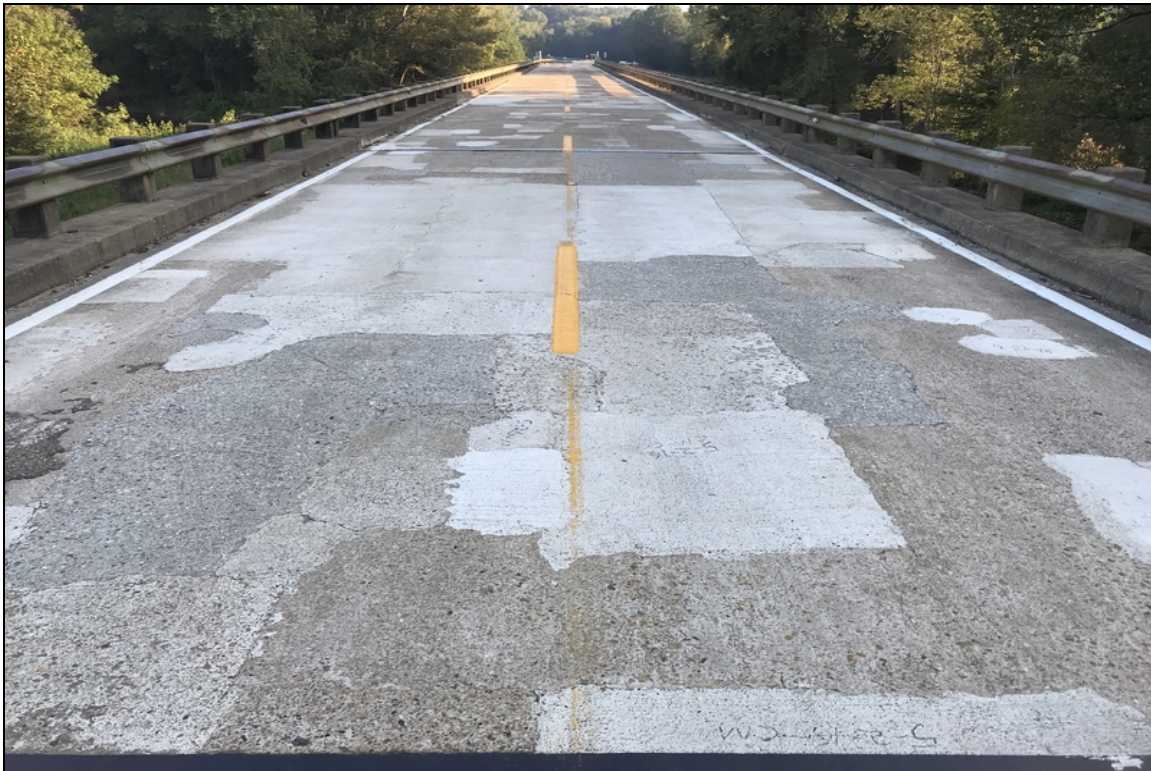


AL



SS





Deck



**Bridge #03095**(Routine)

**SH 19-SEC.05-11.46 over LITTLE MISSOURI RIVER**

**Location: .04 MI S OF PIKE CO LINE**

**Team Lead:** Charlie Rogers **Inspection Date:** September 16, 2019

## **Maintenance Needs**



Bridge #03095(Routine)

SH 19-SEC.05-11.46 over LITTLE MISSOURI RIVER

Location: .04 MI S OF PIKE CO LINE

Team Lead: Charlie Rogers Inspection Date: September 16, 2019

### Inspection Comments

snooper needed to get to pin and hangers traffic control also needed..

---

### Deck Notes

4 POOR.DECK PATCHES.... 09/18/2017 AL AND SS PHOTOS TAKEN. PINS TESTED WITH ULTRASONIC DEVICE AND NO CRACKS WERE FOUND.SPAN 4 OVERHANG SMALL SPALL W/REBAR EXPOSED.SPAN 6 BAY 4 MEDIUM SPALLS WITH REBAR EXPOSED AND LEFT AND RIGHT SIDE OVERHANG SPALLED W/REBAR EXPOSED. VARIOUS UNDER DRAINS SPALLED WITH REBAR EXPOSED.09/17/2018 AL,SS, pins tested and no cracks found..09/16/2019...AL,SS,DECK,DEF. PHOTOS TAKEN. UPDATED DECK PATCH QUANTITIES IN ELEMENTS...

---

### Superstructure Notes

5 FAIR ....BENT 7 SPAN 7 SIDE ALL BEAMS HAVE HEAVY RUST AND SECTION LOSS.BENT 7 SPAN 7 SIDE BEAM 2 HOLE IN BEAM.BENT 7 SPAN 7 SIDE DIAPHRAM BETWEEN BEAMS 1 AND 2 HAVE SHEARED OFF A BOLT.IN & HANGERS.AT ALL JOINTS,SECTION LOSS BEHIND HANGERS..STEEL BEAMS RT SIDE EXTERIOR BEAM AT BT 6 HAS 3/8" SECT. LOSS TO BOTTOM FLANGE & 1/8" LOSS TO BOTTOM PORTION OF WEB.BOLTS THAT CONNECTS

BEARING TO BEAMS AT BENT #5 EXTERIOR BEAMS HAVE APPROX. 85% SECTION LOSS. .1/8" section loss to bottom flange 4 Span 4 bay 1 2nd diaphragm past cap bolt broke broke off long..2019 Span 4 bay 1 2nd diaphragm past cap bolt broke broke off

---

### Substructure Notes

CONCTETE CAPS BT 6 LT SIDE END CORNER OF CAP IS SPALLED.