

DATE	REVISED	BY	DATE	REVISED	BY
4-14-75	1	J.D.B.	4-14-75	1	J.D.B.
11-7-75	2	J.D.B.	11-7-75	2	J.D.B.
12-9-75	3	J.D.B.	12-9-75	3	J.D.B.

**GENERAL NOTES**

**SPECIFICATIONS:**  
ARKANSAS STATE HIGHWAY COMMISSION. 1. 4RD SPECIFICATIONS FOR HIGHWAY CONSTRUCTION, EDITION OF 1972.

**CONCRETE:**  
ALL CONCRETE SHALL BE CLASS "C" WITH A MINIMUM STRENGTH OF 3500 PSI AT 28 DAYS.

ALL EXPOSED CORNERS TO HAVE A 3/4" X 45° CHAMFER, ALL OTHER CORNERS TO BE ROUNDED TO 1/4" RADIUS.  
CONCRETE WILL NOT BE PAID FOR DIRECTLY, BUT WILL BE CONSIDERED AS SUBSIDIARY TO THE ITEM OF PRECAST SLAB UNITS.

**WIRE FABRIC:**  
STEEL WIRE FABRIC SHALL CONFORM TO THE SPECIFICATIONS FOR WELDED STEEL WIRE FABRIC, FOR CONCRETE REINFORCEMENT OF ALASKA SPECIFICATION FOR HIGHWAY MATERIALS, DESIGNATION M55-TO-14.0.7M. DESIGNATION A195-7.2.1. WIRE MESH WILL NOT BE PAID FOR DIRECTLY, BUT WILL BE CONSIDERED AS SUBSIDIARY TO THE ITEM OF PRECAST SLAB UNITS.

**REINFORCING STEEL:**  
REINFORCING STEEL SHALL BE ASTM A615 GRADE 40 OR GRADE 60 AS NOTED. ALL REINFORCING STEEL AND WIRE FABRIC SHALL BE ACCURATELY LOCATED IN THE FORMS AND SECURELY HELD IN PLACE BY MEANS OF STEEL WIRE SUPPORTS. REINFORCING STEEL WILL NOT BE PAID FOR DIRECTLY, BUT WILL BE CONSIDERED AS SUBSIDIARY TO THE ITEM OF PRECAST SLAB UNITS.

**HARDWARE:**  
ALL MACHINE BOLT CONNECTING SLAB UNITS WILL NOT BE PAID FOR DIRECTLY, BUT WILL BE CONSIDERED AS SUBSIDIARY TO THE BID PRICE PER PRECAST SLAB UNITS.  
PAINT ALL BOLT HEADS, WASHERS AND NUTS WITH ALUMINUM PAINT AFTER ASSEMBLY IS COMPLETE.

**ROUTING OF KEYWAY:**  
GROUT 1:2:3 MIX-DRY PACK, MAXIMUM SIZE AGGREGATE 3/8". MATERIAL AND LABOR FOR MIXING AND PLACING WILL NOT BE PAID FOR DIRECTLY, BUT WILL BE CONSIDERED AS SUBSIDIARY TO THE ITEM OF PRECAST SLAB UNIT.

**COATING:**  
COATING TO BE APPLIED BETWEEN ENDS OF ADJACENT UNITS.  
THIS COATING SHALL CONSIST OF AN ASPHALTIC PAINT WITH ASBESTOS FIBER ON EACH SURFACE OF 1/16".  
THE COATING SHALL ADHERE AND SET FIRM TO THE VERTICAL SURFACE OF THE CONCRETE.  
THE SOFTENING POINT SHALL NOT BE LESS THAN 140°F.  
THE COATINGS WILL NOT BE PAID FOR DIRECTLY, BUT WILL BE CONSIDERED AS SUBSIDIARY TO THE ITEM OF PRECAST SLAB UNITS.

**TOLERANCES:**  
A DEVIATION OF MORE THAN 1/4" IN DIM, GRADE OR LINE WILL BE CAUSE FOR REJECTION OF THE UNITS.

**BUILDERS FOR PRESTRESSED SLAB UNITS ARE:**  
31'-0" PRECAST SLAB CURB UNIT, EACH  
31'-0" PRECAST SLAB INTERIOR UNIT, EACH  
FOR ADDITIONAL DETAILS SEE DRAWING NO. 14891 REV.

## DETAILS OF STANDARD PRECAST SLAB BRIDGE

### 31'-0" SPAN

26'-0" CLEAR ROADWAY  
ROUTE SEC.

ARKANSAS STATE HIGHWAY COMMISSION  
LITTLE ROCK, ARK.

**DESIGN DATA**

**SPECIFICATIONS:** A.A.S.H.T.O. 1973 (1974 INTERIM)

**UNIT STRESSES:**  
28 DAY COMPRESSIVE STRENGTH OF CONCRETE: 3500 PSI  
TENSILE STRENGTH OF REINFORCING: GRADE 40: 40,000 PSI  
GRADE 60: 60,000 PSI  
WIRE FABRIC: 65,000 PSI

**LIVE LOAD:** HS 20-44  
METHOD OF DESIGN: 2 LOAD FACTOR

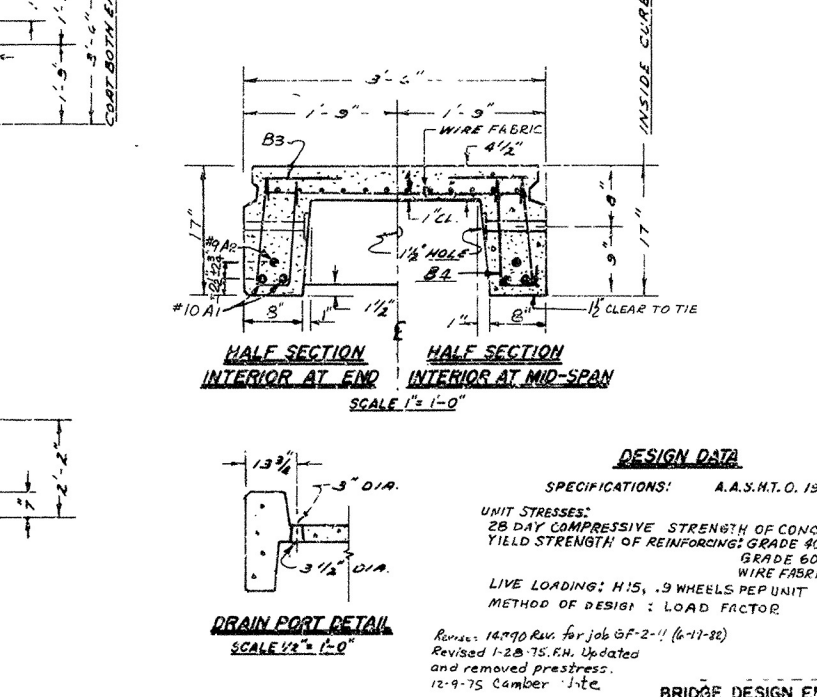
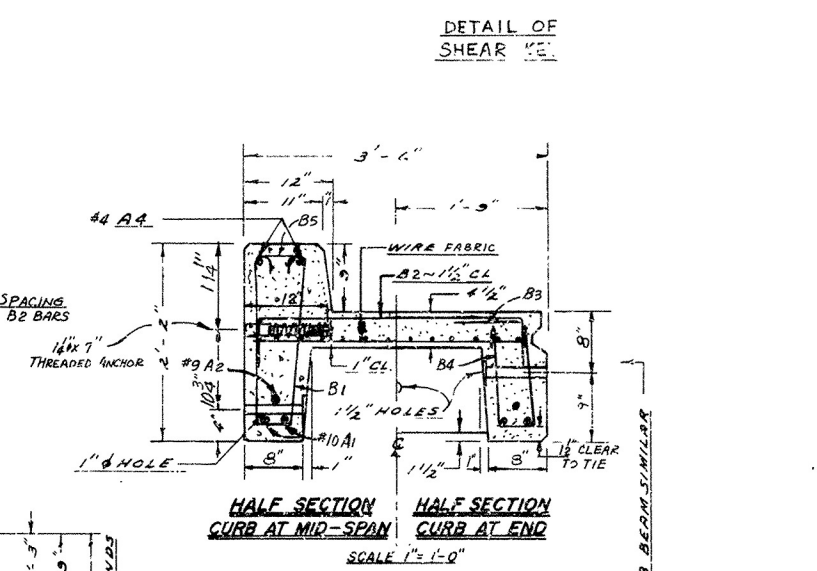
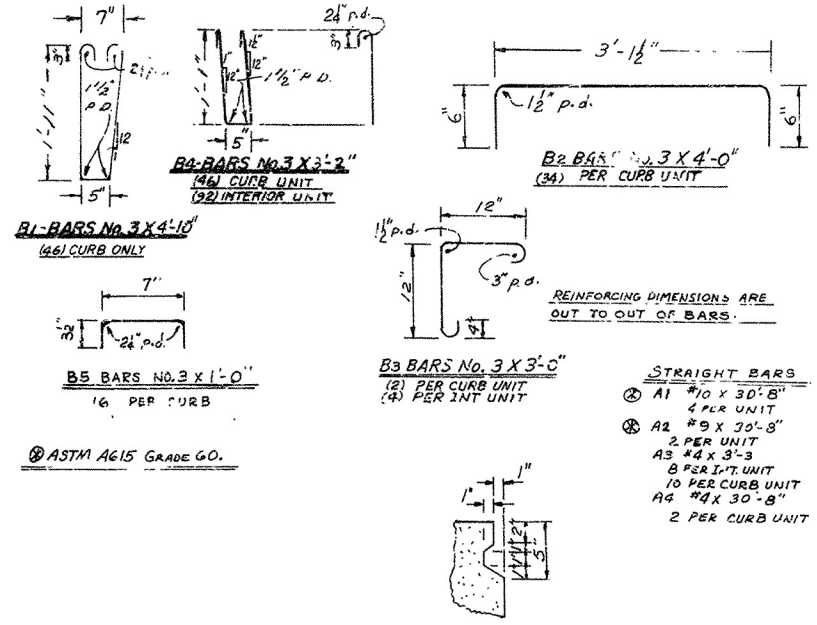
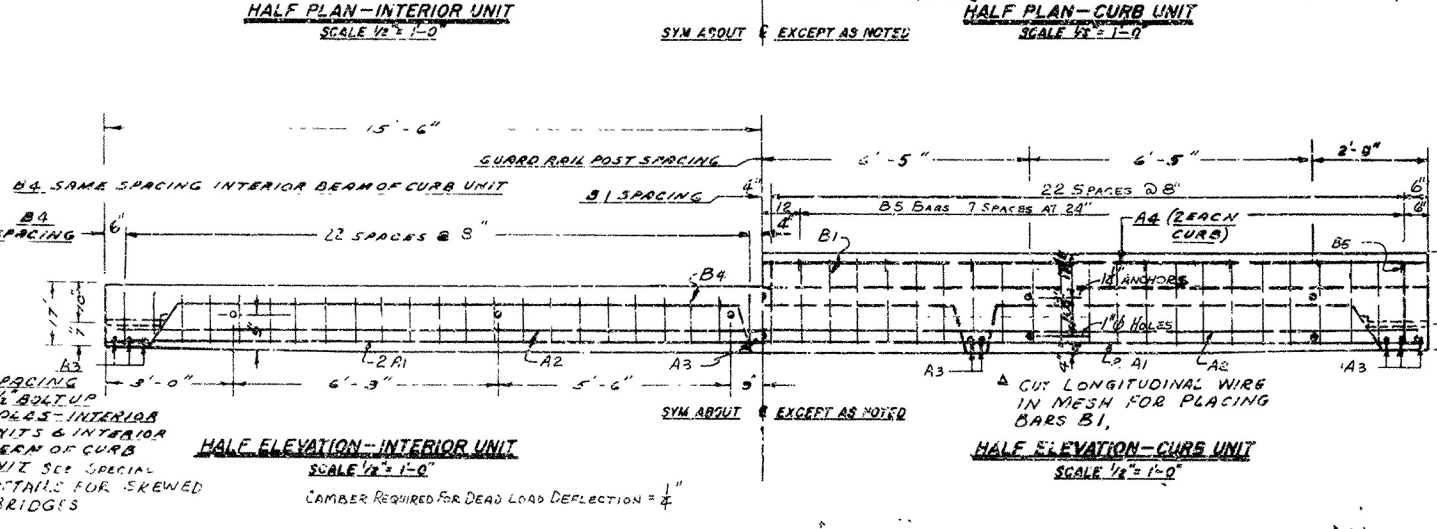
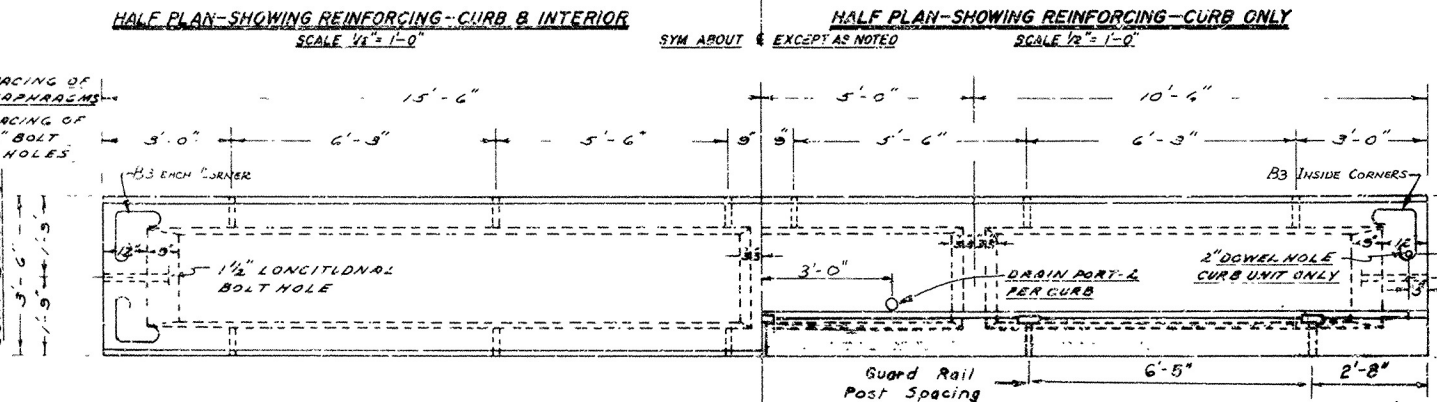
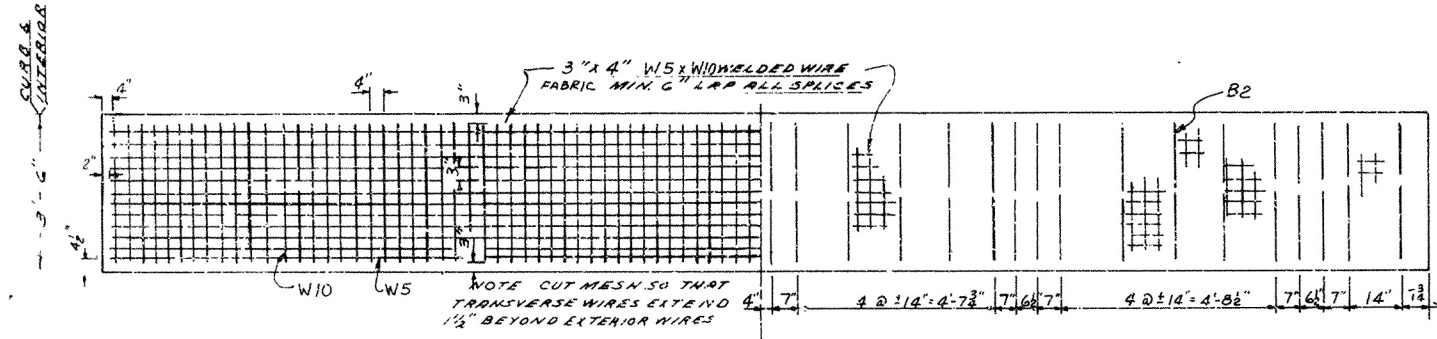
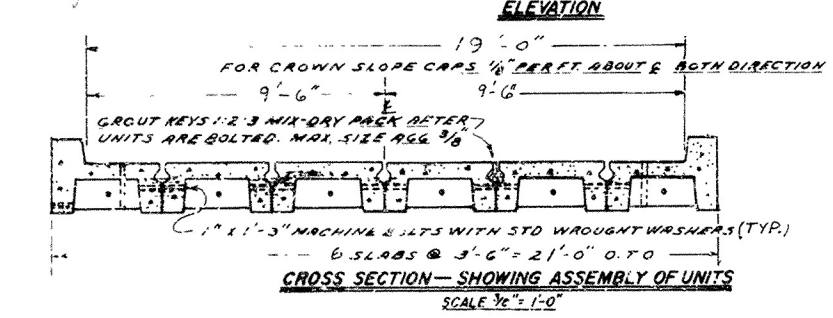
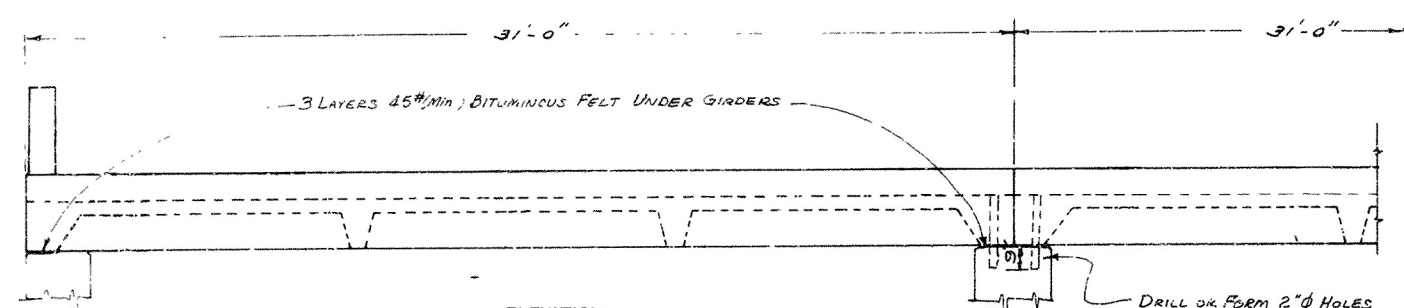
Revised 1-28-75, R.H. Updated and removed prestress.  
12-9-75 Designer: Note.

Drawn by J.D.B.  
Revised by R.H. 1-28-75  
Checked by J.D.B. 3-6-75  
BRIDGE DESIGN ENGINEER  
J.D.B.  
DRAWING NO. 14891 REV.





ARK JOB NO.	FA SHEET TOTAL NO.	NO SHEET
DATE REVISED 4-14-75 11-7-75 12-4-75	DATE FILMED 9-17-75 7-30-77 512 12-2-75	42224



**GENERAL NOTES**

**SPECIFICATIONS:**  
ARKANSAS STATE HIGHWAY COMMISSION STANDARD SPECIFICATIONS FOR HIGHWAY CONSTRUCTION, EDITION OF 1972.

**CONCRETE:**  
ALL CONCRETE SHALL BE CLASS "B" WITH A MINIMUM STRENGTH OF 3500 PSI AT 28 DAYS.

ALL EXPOSED CORNERS TO HAVE A 3/4" x 45° CHAMFER, ALL OTHER CORNERS TO BE ROUNDED TO 1/4" RADIUS. CONCRETE WILL NOT BE PAID FOR DIRECTLY, BUT WILL BE CONSIDERED AS SUBSIDIARY TO THE ITEM OF PRECAST SLAB UNITS.

**WIRE FABRIC:**  
STEEL WIRE FABRIC SHALL CONFORM TO THE SPECIFICATIONS FOR WELDED STEEL WIRE FABRIC, FOR CONCRETE REINFORCEMENT (F. A. A. S. H. O. SPECIFICATION FOR HIGHWAY MATERIALS, DESIGNATION M55-70, (A. S. T. M. DESIGNATION A185-72). WIRE MESH WILL NOT BE PAID FOR DIRECTLY, BUT WILL BE CONSIDERED AS SUBSIDIARY TO THE ITEM OF PRECAST SLAB UNITS.

**REINFORCING STEEL:**  
REINFORCING STEEL SHALL BE ASTM A615, GRADE 40 OR GRADE 60 AS NOTED. ALL REINFORCING STEEL AND WIRE FABRIC SHALL BE ACCURATELY LOCATED IN THE FORMS AND SECURELY HELD IN PLACE BY MEANS OF STEEL WIRE SUPPORTS. REINFORCING STEEL WILL NOT BE PAID FOR DIRECTLY, BUT WILL BE CONSIDERED AS SUBSIDIARY TO THE ITEM OF PRECAST SLAB UNITS.

**HARDWARE:**  
ALL MACHINE BOLT CONNECTING SLAB UNITS WILL NOT BE PAID FOR DIRECTLY, BUT WILL BE CONSIDERED AS SUBSIDIARY TO THE BID PRICE PER PRECAST SLAB UNITS. PAINT ALL BOLT HEADS, WASHERS AND NUTS WITH ALUMINUM PAINT AFTER ASSEMBLY IS COMPLETE.

**GROUTING OF KEYWAY:**  
GROUT 1:2:3 MIX-DRY PACK, MAXIMUM SIZE AGGREGATE 3/4". MATERIAL AND LABOR FOR MIXING AND PLACING WILL NOT BE PAID FOR DIRECTLY, BUT WILL BE CONSIDERED AS SUBSIDIARY TO THE ITEM OF PRECAST SLAB UNIT.

**COATINGS:**  
COATING TO BE APPLIED BETWEEN ENDS OF ADJACENT UNITS. THIS COATING SHALL CONSIST OF AN ASPHALTIC PAINT WITH ASBESTOS FIBER ON EACH SURFACE OF 1/16". THE COATING SHALL ADHERE AND SET FIRM TO THE VERTICAL SURFACE OF THE CONCRETE. THE SOFTENING POINT SHALL NOT BE LESS THAN 140°F. THE COATING WILL NOT BE PAID FOR DIRECTLY, BUT WILL BE CONSIDERED AS SUBSIDIARY TO THE ITEM OF PRECAST SLAB UNITS.

**TOLERANCES:**  
A DEVIATION OF MORE THAN 1/8" IN DIM., GRADE OR LINE WILL BE CAUSE FOR REJECTION OF THE UNITS.

**BID ITEMS FOR PRESTRESSED SLAB UNITS ARE:**  
31'-0" PRECAST SLAB CURB UNIT, EACH.  
31'-0" PRECAST SLAB INTERIOR UNIT, EACH.  
FOR ADDITIONAL DETAILS SEE DRAWING No. 14899.

# DETAILS OF STANDARD PRECAST SLAB BRIDGE 31'-0" SPAN

19'-0" CLEAR ROADWAY  
ROUTE SEC.

ARKANSAS STATE HIGHWAY COMMISSION  
LITTLE ROCK, ARK.

**DESIGN DATA**

**SPECIFICATIONS:** A.A.S.H.T.O. 1973 & 1974 INTERIM

**UNIT STRESSES:**  
28 DAY COMPRESSIVE STRENGTH OF CONCRETE = 3500 PSI  
YIELD STRENGTH OF REINFORCING: GRADE 40 = 40,000 PSI  
GRADE 60 = 60,000 PSI  
WIRE FABRIC = 65,000 PSI

**LIVE LOADING:** H-15, .9 WHEELS PER UNIT  
**METHOD OF DESIGN:** LOAD FACTOR

Revised 1-28-75, K.H. Updated and removed prestress.  
12-9-75 Camber Note.

Drawn By J.D.B.  
Revised by F.H. 1-28-75  
Checked By  
BRIDGE No. 4447  
DRAWING No. 14899 A

BRIDGE DESIGN ENGINEER