

# Bridge Inspection Report

A1340  
US 64  
over  
GOOSE POND



**Inspection Date:**

**Inspected By:**

**Inspection Type(s):**

Inspector:

Structure Number: A1340

Inspection Date:

Facility Carried: US 64

## Bridge Inspection Report

### Location Map



Latitude: 35.29317

Longitude: -91.37634



Inspector:

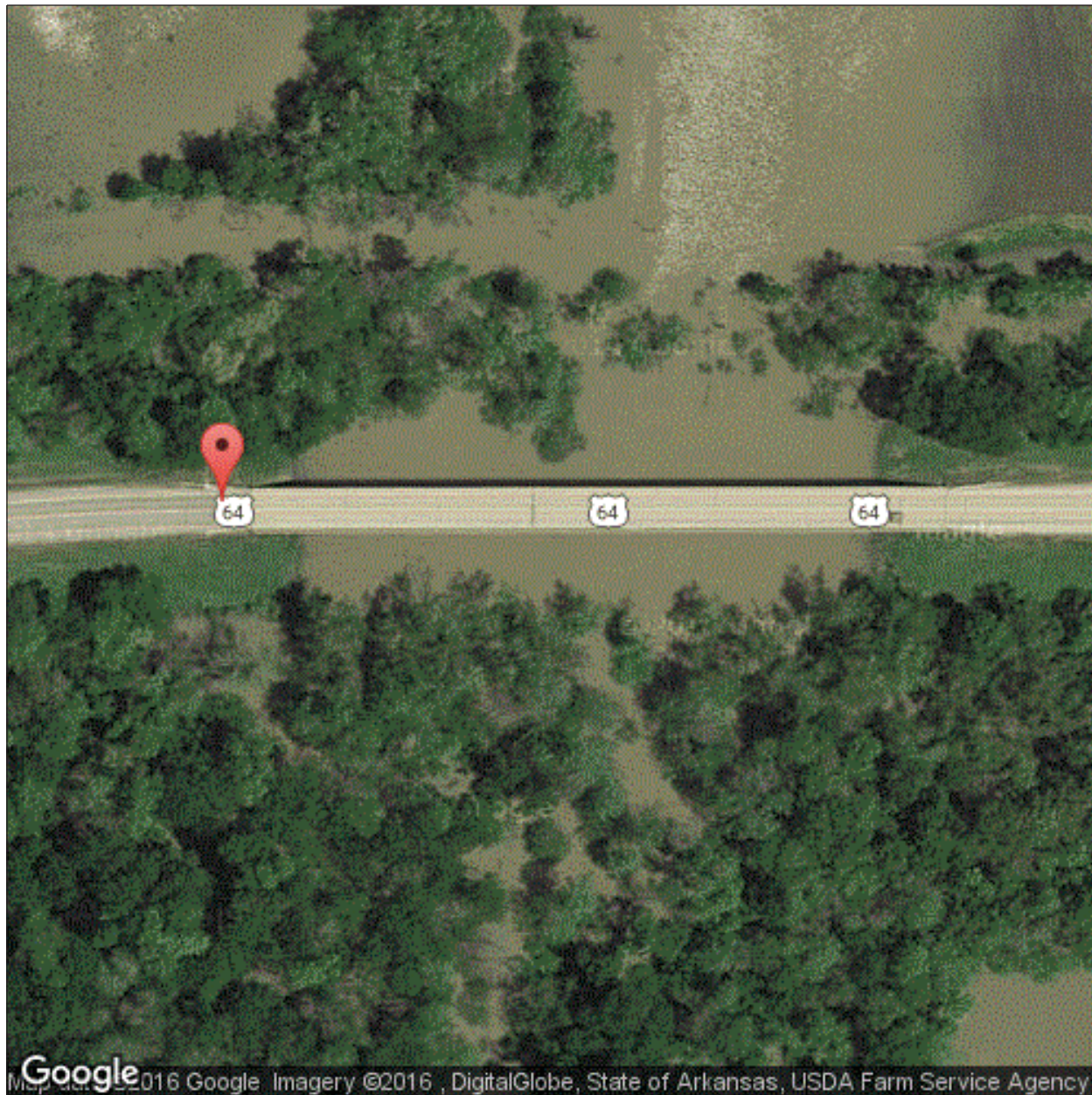
Structure Number: A1340

Inspection Date:

Facility Carried: US 64

## Bridge Inspection Report

### Location Map



Latitude: 35.29317

Longitude: -91.37634



Inspector:

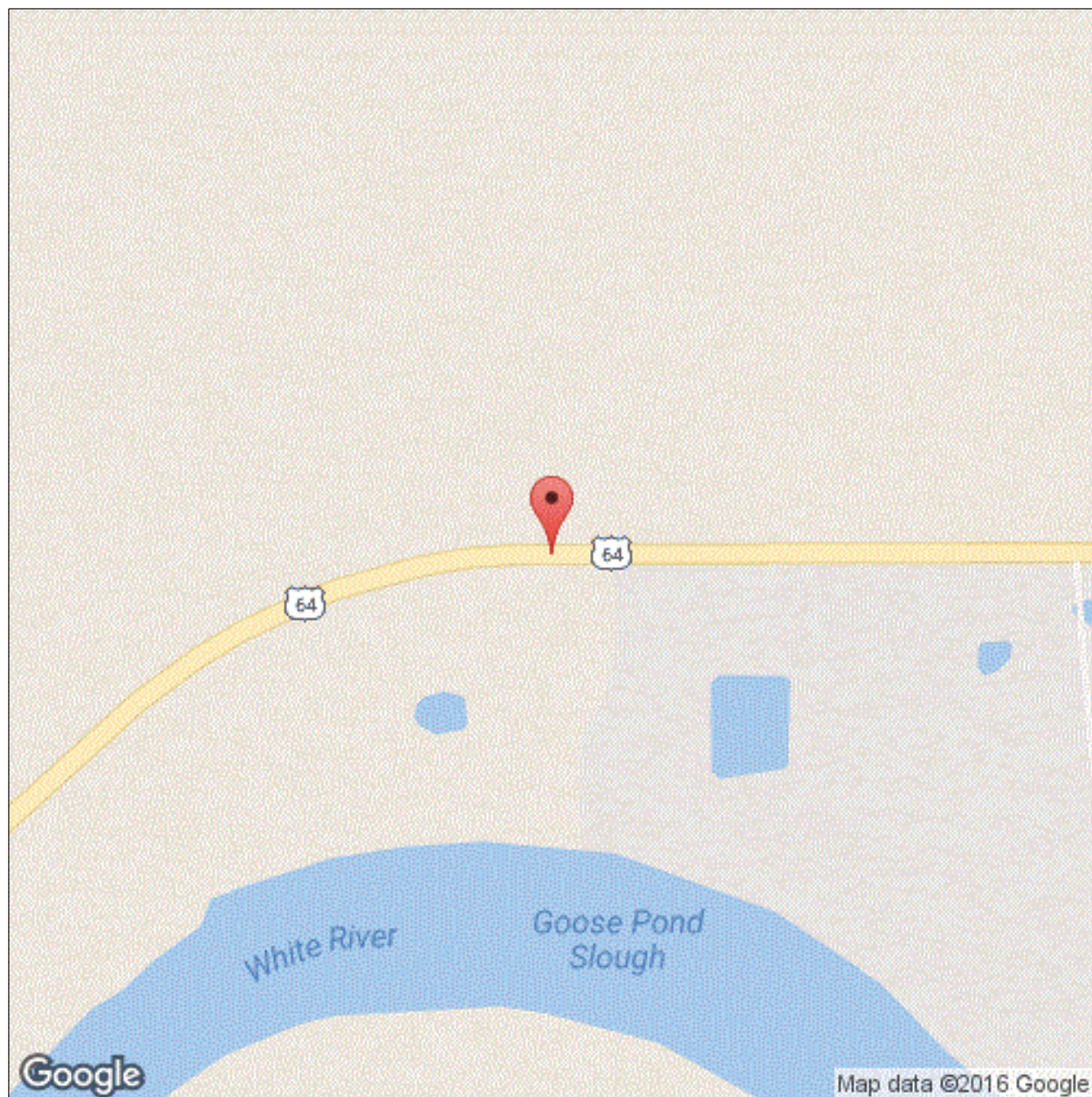
Inspection Date:

Structure Number: A1340

Facility Carried: US 64

## Bridge Inspection Report

### Location Map



Latitude: 35.29317

Longitude: -91.37634

Inspector:

Structure Number: A1340

Inspection Date:

Facility Carried: US 64

## Bridge Inspection Report

### Executive Summary

7-27-2016- REMOVED SPECIAL INSPECTION DUE TO ITEM 113 SCOUR RATING BEING RAISED TO  
A 5.  
A

Inspector:

Structure Number: A1340

Inspection Date:

Facility Carried: US 64

## Bridge Inspection Report

## National Bridge Inventory

IDENTIFICATION		INSPECTIONS	
(1) STATE CODE	056 - Arkansas	(90) INSPECTION DATE	08/31/2015
(8) STRUCTURE NUMBER	A1340	(91) DESIGNATED INSPECTION FREQUENCY	24
(5) INV. ROUTE (ON/UNDER)	1 2 1 64 0	(92) CRITICAL FEATURE INSPECTION	(93) CFI DATE
(2) HIGHWAY AGENCY	01 (3) COUNTY CODE 147	A. FRACTURE CRITICAL DETAIL	N
(4) PLACE CODE	00000	B. UNDERWATER INSPECTION	N
(6) FEATURES INTERSECTED	GOOSE POND	C. OTHER SPECIAL	Y 24 07/27/2016
(7) FACILITY CARRIED	US 64		
(9) LOCATION	2.19 MI E WHITE CO LINE		
(11) MILEPOINT 2.190	(12) BASE HIGHWAY NETWORK 1		
(13A) LRS INVENTORY ROUTE	0000064120 (13B) SUBROUTE NUMBER 00		
(16) LATITUDE 35.29317	(17) LONGITUDE -91.37634		
(98A) BORDER BRIDGE CODE			
PERCENT RESPONSIBILITY	(99) BORDER BRIDGE STRUCT		
STRUCTURE TYPE AND MATERIAL		CONDITION	
(43) STRUCTURE TYPE, MAIN		(58) DECK	7
A) KIND OF MATERIAL/DESIGN: 1 - Concrete		(59) SUPERSTRUCTURE	5 (60) SUBSTRUCTURE 7
B) TYPE OF DESIGN/CONSTR: 04 - Tee Beam		(61) CHANNEL & CHANNEL PROTECTION	7 (62) CULVERT N
(44) STRUCTURE TYPE, APPROACH SPANS			
A) KIND OF MATERIAL/DESIGN: 0 - Other			
B) TYPE OF DESIGN/CONSTR: 00 - Other			
(45) NUMBER OF SPANS IN MAIN 15	(46) NUMBER OF APPROACH 0		
(107) DECK STRUCTURE TYPE 1	(108A) WEARING SURFACE 6		
(108B) DECK MEMBRANE 0	(108C) DECK PROTECTION 0		
AGE OF SERVICE		LOAD RATING AND POSTING	
(27) YEAR BUILT 1930	(106) YEAR RECONSTRUCTED 1965	(31) DESIGN LOAD	4
(42) TYPE OF SERVICE ON 1 UNDER 5		(63) METHOD USED TO DETERMINE OPERATING RATING	1
(28) LANES ON 02 UNDER 00		(64) OPERATING RATING	57.0
(29) AVERAGE DAILY TRAFFIC 5400	(19) BYPASS DETOUR LENGTH 25	(65) METHOD USED TO DETERMINE INVENTORY RATING	1
(30) YEAR OF AVERAGE DAILY TRAFFIC 2014		(66) INVENTORY RATING	35.1
(109) AVERAGE DAILY TRUCK TRAFFIC 32		(70) BRIDGE POSTING	5
		(41) STRUCTURE OPEN/POSTED/CLOSED	A
GEOMETRIC DATA		APPRAISAL	
(48) LENGTH OF MAX SPAN (ft.) 34	(49) STRUCTURE LENGTH (ft.) 511	(67) STRUCTURAL EVALUATION	5
(50) CURB/SIDEWALK WIDTHS (ft.) LEFT 1.4 RIGHT 1.4		(68) DECK GEOMETRY	4
(51) BRDG RDWY WIDTH CURB-TO-CURB (ft.)	27.9	(69) UNDERCLEARANCES, VERTICAL & HORIZONTAL	N
(52) DECK WIDTH, OUT-TO-OUT (ft.)	33.5	(71) WATERWAY ADEQUACY	8
(32) APPROACH ROADWAY WIDTH (ft.)	44.0	(72) APPROACH ROADWAY ALIGNMENT	8
(33) BRIDGE MEDIAN 0	(34) SKEW (DEG.) 0	(36) TRAFFIC SAFETY FEATURE	
(35) STRUCTURE FLARED 0	(10) INV RTE, MIN VERT CLEAR (ft.) 99.99	36A) BRIDGE RAILINGS:	1
(47) TOTAL HORIZONTAL CLEARANCE (ft.)	30.8	36B) TRANSITIONS:	0
(53) VERTICAL CLEARANCE OVER BRIDGE ROADWAY (ft.)	99.99	36C) APPROACH GUARDRAIL:	0
(54) VERTICAL UNDER CLEARANCE (ft.)	N 0	36D) APPROACH GUARDRAIL ENDS:	0
(55) LATERAL UNDER CLEARANCE RIGHT (ft.)	N 99.9	(113) SCOUR CRITICAL BRIDGES	5
(56) MIN LATERAL UNDER CLEARANCE (ft.)	0	SUFFICIENCY RATING	0 STATUS 54.8
PROPOSED IMPROVEMENTS		CLASSIFICATION	
(75A) TYPE OF WORK PROPOSED	(75B) WORK DONE BY	(112) NBIS BRIDGE LENGTH	Y
(76) LENGTH OF STRUCTURE IMPROVEMENT (ft.) 0		(104) HIGHWAY SYSTEM OF THE INVENTORY ROUTE	0
(94) BRIDGE IMPROVEMENT COST (\$)	0	(26) FUNCTIONAL CLASSIFICATION OF INVENTORY ROUTE	06
(95) ROADWAY IMPROVEMENT COST (\$)	0	(100) STRAHNET HIGHWAY DESIGNATION	0
(96) TOTAL PROJECT COST	0	(101) PARALLEL STRUCTURE DESIGNATION	N
(97) YEAR OF IMPROVEMENT COST ESTIMATE		(102) DIRECTION OF TRAFFIC	2
(114) FUTURE ADT 6386	(115) YEAR OF FUTURE ADT 2028	(103) TEMP STRUCTURE	
		(105) FEDERAL LANDS HIGHWAYS	0
		(110) DESIGNATED NATIONAL NETWORK	1
		(20) TOLL	3
		(21) MAINTENANCE RESPONSIBILITY	01
		(22) OWNER	01
		(37) HISTORICAL	5
		NAVIGATION DATA	
		(38) NAVIGATION CONTROL	0
		(111) PIER OR ABUTMENT PROTECTION	1
		(39) NAV VERT CLEARANCE (ft.)	0
		(116) MIN NAVIGATION VERT CLEARANCE, VERT LIFT BRIDGE (ft.)	0
		(40) NAV HORIZONTAL CLEARANCE (ft.)	0

Inspector:

Structure Number: A1340

Inspection Date:

Facility Carried: US 64

## Bridge Inspection Report

## Element Inspection

	Environment	Total Quantity	Units	Condition State 1	Condition State 2	Condition State 3	Condition State 4
<b>16 - Reinforced Concrete Top Flange</b>	1- Ben.	15764	sq. ft.	15764			
	JOINTS ARE CRACKING, JOINTS OVER EXPANSION BENTS ARE CRACKED AND RAVELING. EACH SPAN HAS LONGITUDINAL CRACKS IN ASPHALT BOTH LANES						
510 - Wearing Surfaces		13797	sq. ft.	11377	0	2420	0
3220 - Crack (Wearing Surface)		2420				2420	
<b>110 - Reinforced Concrete Open Girder/Beam</b>	1- Ben.	3066	ft.	2490	500	76	0
	Several girders heavy spalling w/ loss of bearing See Form III						
1080 - Delamination/Spall/Patched Area		28				28	
1090 - Exposed Rebar		16				16	
1120 - Efflorescence/Rust Staining		250			250		
1130 - Cracking (RC and Other)		282			250	32	
<b>215 - Reinforced Concrete Abutment</b>	1- Ben.	80	ft.	80			
<b>227 - Reinforced Concrete Pile</b>	1- Ben.	88	each	87	1	0	0
	BENT # 14 PILE # 6 IS CRACKED AT TOP.						
1130 - Cracking (RC and Other)		1			1		
<b>234 - Reinforced Concrete Pier Cap</b>	1- Ben.	392	ft.	365	0	27	0
	SEVERAL CAPS HAVE CRACKS, SPALLS AND DELAMINATIONS. SEE FORM III						
1080 - Delamination/Spall/Patched Area		6				6	
1090 - Exposed Rebar		11				11	
1130 - Cracking (RC and Other)		10				10	
<b>311 - Movable Bearing</b>	1- Ben.	42	each	24	0	18	0
	BENTS # 3,5,6,7,11,12,13,14,15 BEARINGS AT GIRDERS 1&6 ARE HEAVILY CORRODED WITH UP TO 15% SECTION LOSS.						
1000 - Corrosion		18				18	
515 - Steel Protective Coating		84	sq. ft.	0	48	0	36
3440 - Effectiveness (Steel Protective Coatings)		84			48		36
<b>330 - Metal Bridge Railing</b>	1- Ben.	1017	ft.	1017			
<b>331 - Reinforced Concrete Bridge Railing</b>	1- Ben.	1017	ft.	1017			



Inspector:

Structure Number: A1340

Inspection Date:

Facility Carried: US 64

### Bridge Inspection Report

#### Maintenance Needs

**Date Reported:** 9/3/2013 12:00:00 AM

**Priority:** C - Important

**Work Code:**

---

**Deficiency Description:**

Abutment # 1&2 slopes

slopes have large holes caused by burrowing animals.

**Work Description:**

---

**Date Repairs Completed:**

**Maintenance Comments:**

---

**Date Reported:** 9/3/2013 12:00:00 AM

**Priority:** D - Routine

**Work Code:**

---

**Deficiency Description:**

Approach rail abutment # 1 left side.

bolt and spacer missing at bridge end.

**Work Description:**

---

**Date Repairs Completed:**

**Maintenance Comments:**

---

**Date Reported:** 08/31/2015

**Priority:** D - Routine

**Work Code:**

---

**Deficiency Description:**

VEGETATION GROWING UP BENTS #2 &15 ONTO CAPS

**Work Description:**

---

**Date Repairs Completed:**

**Maintenance Comments:**

---



Inspector:

Structure Number: A1340

Inspection Date:

Facility Carried: US 64

## Bridge Inspection Report

### Maintenance Needs

Date Reported: 8/30/2011 12:00:00 AM

Priority: C - Important

Work Code:

---

#### Deficiency Description:

SOFFIT

MOST SPANS

MOST SPANS HAVE CRACKS, DELAMINATIONS AND OR SPALLS

#### Work Description:

---

Date Repairs Completed:

Maintenance Comments:

---

Stage: Monitor



PHOTO 1      Description      Typical exposed rebar in soffit

Stage: Monitor



PHOTO 2      Description      Typical soffit crack with efflorescence.

Inspector:

Inspection Date:

Structure Number: A1340

Facility Carried: US 64

## Bridge Inspection Report

### Maintenance Needs

Stage: Monitor



PHOTO 3      Description      Soffit span 9 between girders 5,6.

Inspector:

Structure Number: A1340

Inspection Date:

Facility Carried: US 64

## Bridge Inspection Report

### Maintenance Needs

Date Reported: 8/30/2011 12:00:00 AM

Priority: C - Important

Work Code:

---

#### Deficiency Description:

Girders

SPAN #2,3,5,6,7,8,9,12,13,14,  
15

Cracking &/or spalling to ends of girders #1 & OR #6. Interior girders are typ. cracked on ends.

#### Work Description:

---

Date Repairs Completed:

Maintenance Comments:

---

Stage: Monitor



PHOTO 1      Description      Typical light spalling on girder ends.

Stage: Monitor



PHOTO 2      Description      Typical girder end spalled.



Inspector:

Inspection Date:

Structure Number: A1340

Facility Carried: US 64

## Bridge Inspection Report

### Maintenance Needs

Stage: Monitor



PHOTO 3 Description Span 6 girder 3 right side.

Stage: Monitor



PHOTO 4 Description Span 6 girder 3 left side.

Stage: Monitor



PHOTO 5 Description Span 8 girder 5 left side at bent 9

Stage: Monitor



PHOTO 6 Description Span 11 girder 6 right side at bent 10.

Inspector:

Inspection Date:

Structure Number: A1340

Facility Carried: US 64

## Bridge Inspection Report

### Maintenance Needs

Date Reported: 8/30/2011 12:00:00 AM

Priority: D - Routine

Work Code:

---

#### Deficiency Description:

Cap

BENTS #3,4,5,6,7,8,11,12,13,14,15

These caps have areas of cracking, delaminations and or spalls.

#### Work Description:

---

Date Repairs Completed:

Maintenance Comments:

---

Stage: Monitor



PHOTO 1      Description      Typical spall bottom of cap.

Stage: Monitor



PHOTO 2      Description      Bent 13 cap ahead face right end 2' spall under bearing area 6

Inspector:

Structure Number: A1340

Inspection Date:

Facility Carried: US 64

## Bridge Inspection Report

### Maintenance Needs

Date Reported: 8/30/2011 12:00:00 AM

Priority: D - Routine

Work Code:

---

#### Deficiency Description:

BEARINGS

Bents #3,5,6,7,11,13,14,15

Heavy rust with section loss to bearings #1 & #6

Heavy build up of debris on caps

#### Work Description:

---

Date Repairs Completed:

Maintenance Comments:

---

Stage: Monitor



PHOTO 1      Description      Typical bearings on outside girders.

Stage: Monitor



PHOTO 2      Description      Typical bearing



Inspector:

Structure Number: A1340

Inspection Date:

Facility Carried: US 64

## Bridge Inspection Report

### Maintenance Needs

Date Reported: 9/3/2013 12:00:00 AM

Priority: D - Routine

Work Code:

---

#### Deficiency Description:

Deck Joints at expansion bents.

Asphalt is cracked and raveling at these locations.

#### Work Description:

---

Date Repairs Completed:

Maintenance Comments:

---

Stage: Monitor



PHOTO 1      Description      Typical cracks in asphalt at joints.