

# Bridge Inspection Report

06902

Hwy64/sec16/L14.10

over

St Francis River



**Inspection Date:**

**Inspected By:**

**Inspection Type(s):**

Inspector:

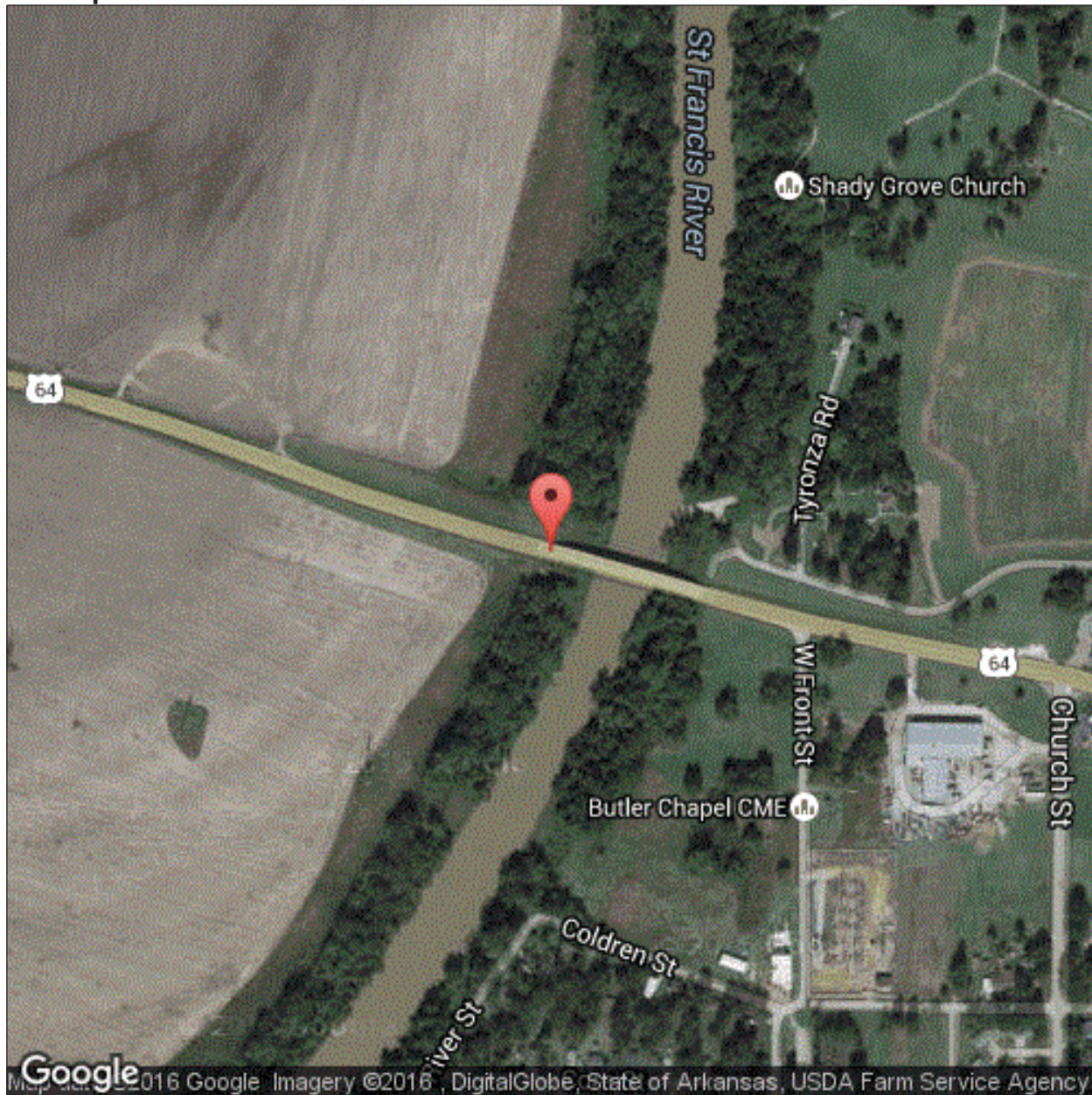
Inspection Date:

Structure Number: 06902

Facility Carried: Hwy64/sec16/L14.  
10

## Bridge Inspection Report

### Location Map



Latitude: 35.273556

Longitude: -90.560806



Inspector:

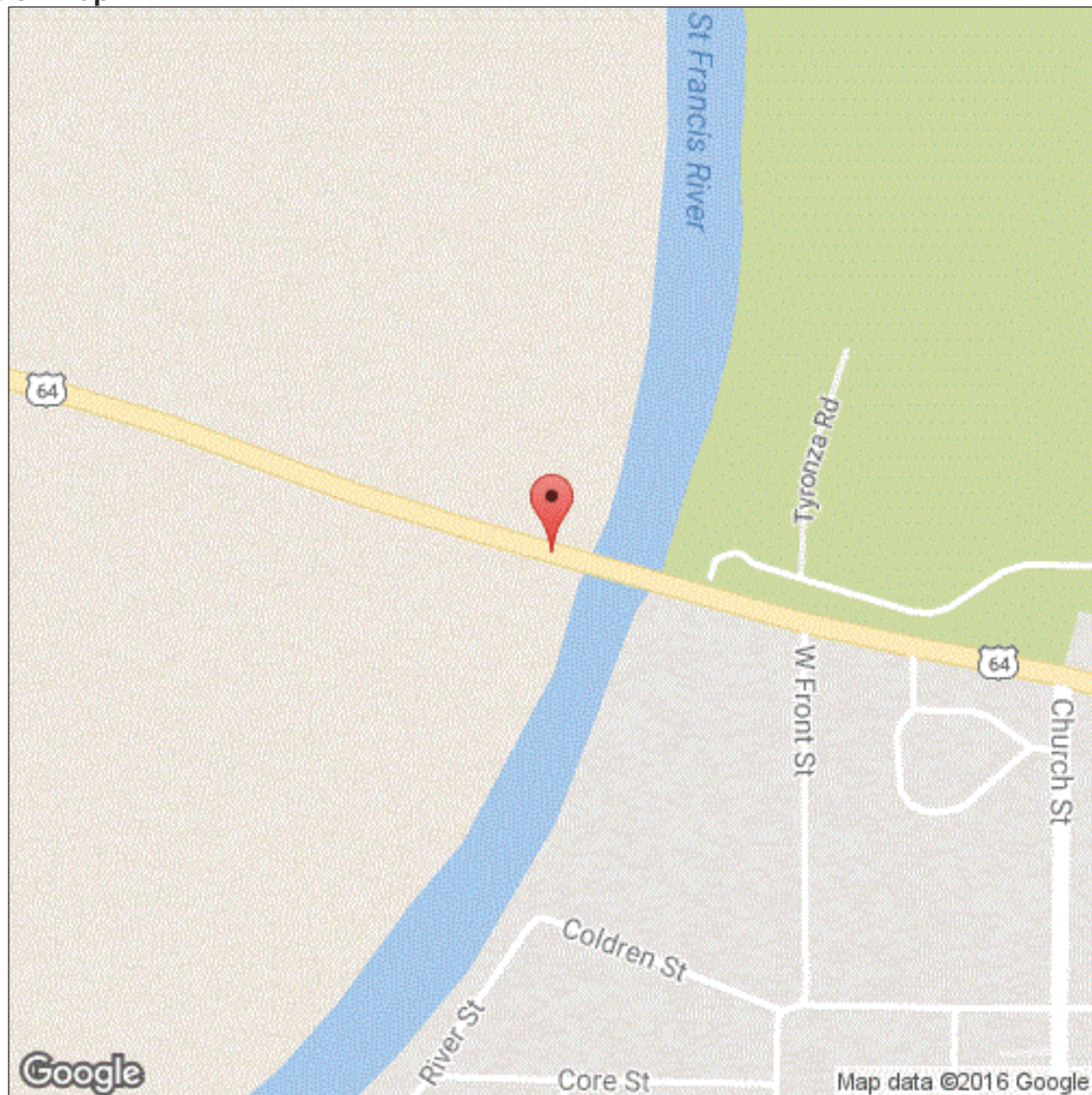
Inspection Date:

Structure Number: 06902

Facility Carried: Hwy64/sec16/L14.  
10

## Bridge Inspection Report

### Location Map



Latitude: 35.273556

Longitude: -90.560806

Inspector:

Structure Number: 06902

Inspection Date:

Facility Carried: Hwy64/sec16/L14.  
10

## Bridge Inspection Report

## National Bridge Inventory

IDENTIFICATION		INSPECTIONS	
(1) STATE CODE	056 - Arkansas	(90) INSPECTION DATE	06/21/2016
(8) STRUCTURE NUMBER	06902	(91) DESIGNATED INSPECTION FREQUENCY	24
(5) INV. ROUTE (ON/UNDER)	1 2 1 64 0	(92) CRITICAL FEATURE INSPECTION	(93) CFI DATE
(2) HIGHWAY AGENCY 01	(3) COUNTY CODE 037	A. FRACTURE CRITICAL DETAIL	N
(4) PLACE CODE	51000	B. UNDERWATER INSPECTION	N
(6) FEATURES INTERSECTED	St Francis River	C. OTHER SPECIAL	N
(7) FACILITY CARRIED	Hwy64/sec16/L14.10		
(9) LOCATION	0.1 Mi w Jct SH 75		
(11) MILEPOINT 14.100	(12) BASE HIGHWAY NETWORK 1		
(13A) LRS INVENTORY ROUTE	0000064160	(13B) SUBROUTE NUMBER	00
(16) LATITUDE	35.273556	(17) LONGITUDE	-90.560806
(98A) BORDER BRIDGE CODE			
PERCENT RESPONSIBILITY	(99) BORDER BRIDGE STRUCT		
STRUCTURE TYPE AND MATERIAL		CONDITION	
(43) STRUCTURE TYPE, MAIN		(58) DECK	8
A) KIND OF MATERIAL/DESIGN: 4 - Steel continuous		(59) SUPERSTRUCTURE	9
B) TYPE OF DESIGN/CONSTR: 02 - Stringer/Multi-beam or Girder		(60) SUBSTRUCTURE	8
(44) STRUCTURE TYPE, APPROACH SPANS		(61) CHANNEL & CHANNEL PROTECTION	8
A) KIND OF MATERIAL/DESIGN: 0 - Other		(62) CULVERT	N
B) TYPE OF DESIGN/CONSTR: 00 - Other			
(45) NUMBER OF SPANS IN MAIN	5	(46) NUMBER OF APPROACH	0
(107) DECK STRUCTURE TYPE	1	(108A) WEARING SURFACE	1
(108B) DECK MEMBRANE	0	(108C) DECK PROTECTION	1
AGE OF SERVICE		LOAD RATING AND POSTING	
(27) YEAR BUILT	2004	(106) YEAR RECONSTRUCTED	0000
(42) TYPE OF SERVICE	ON 1 UNDER 5	(63) METHOD USED TO DETERMINE OPERATING RATING	1
(28) LANES	ON 02 UNDER 00	(64) OPERATING RATING	60.0
(29) AVERAGE DAILY TRAFFIC	4700	(65) METHOD USED TO DETERMINE INVENTORY RATING	1
(30) YEAR OF AVERAGE DAILY TRAFFIC	2014	(66) INVENTORY RATING	36.0
(109) AVERAGE DAILY TRUCK TRAFFIC	22	(70) BRIDGE POSTING	5
		(41) STRUCTURE OPEN/POSTED/CLOSED	A
GEOMETRIC DATA		APPRAISAL	
(48) LENGTH OF MAX SPAN (ft.)	128	(49) STRUCTURE LENGTH (ft.)	474
(50) CURB/SIDEWALK WIDTHS (ft.)	LEFT 0 RIGHT 0	(67) STRUCTURAL EVALUATION	8
(51) BRDG RDWY WIDTH CURB-TO-CURB (ft.)	40.0	(68) DECK GEOMETRY	6
(52) DECK WIDTH, OUT-TO-OUT (ft.)	42.8	(69) UNDERCLEARANCES, VERTICAL & HORIZONTAL	N
(32) APPROACH ROADWAY WIDTH (ft.)	40.0	(71) WATERWAY ADEQUACY	9
(33) BRIDGE MEDIAN	0	(34) SKEW (DEG.)	0
(35) STRUCTURE FLARED	0	(10) INV RTE, MIN VERT CLEAR (ft.)	99.99
(47) TOTAL HORIZONTAL CLEARANCE (ft.)	40.0	(72) APPROACH ROADWAY ALIGNMENT	7
(53) VERTICAL CLEARANCE OVER BRIDGE ROADWAY (ft.)	99	(36) TRAFFIC SAFETY FEATURE	
(54) VERTICAL UNDER CLEARANCE (ft.)	N 0	36A) BRIDGE RAILINGS:	1
(55) LATERAL UNDER CLEARANCE RIGHT (ft.)	N 99.9	36B) TRANSITIONS:	1
(56) MIN LATERAL UNDER CLEARANCE (ft.)	0	36C) APPROACH GUARDRAIL:	1
		36D) APPROACH GUARDRAIL ENDS:	1
		(113) SCOUR CRITICAL BRIDGES	8
		SUFFICIENCY RATING	0
		STATUS	95.4
PROPOSED IMPROVEMENTS		CLASSIFICATION	
(75A) TYPE OF WORK PROPOSED	(75B) WORK DONE BY	(112) NBIS BRIDGE LENGTH	Y
(76) LENGTH OF STRUCTURE IMPROVEMENT (ft.)	0	(104) HIGHWAY SYSTEM OF THE INVENTORY ROUTE	0
(94) BRIDGE IMPROVEMENT COST (\$)	0	(26) FUNCTIONAL CLASSIFICATION OF INVENTORY ROUTE	06
(95) ROADWAY IMPROVEMENT COST (\$)	0	(100) STRAHNET HIGHWAY DESIGNATION	0
(96) TOTAL PROJECT COST	0	(101) PARALLEL STRUCTURE DESIGNATION	N
(97) YEAR OF IMPROVEMENT COST ESTIMATE	0000	(102) DIRECTION OF TRAFFIC	2
(114) FUTURE ADT	6147	(103) TEMP STRUCTURE	
(115) YEAR OF FUTURE ADT	2028	(105) FEDERAL LANDS HIGHWAYS	0
		(110) DESIGNATED NATIONAL NETWORK	0
		(20) TOLL	3
		(21) MAINTENANCE RESPONSIBILITY	01
		(22) OWNER	01
		(37) HISTORICAL	5
		NAVIGATION DATA	
		(38) NAVIGATION CONTROL	0
		(111) PIER OR ABUTMENT PROTECTION	1
		(39) NAV VERT CLEARANCE (ft.)	0
		(116) MIN NAVIGATION VERT CLEARANCE, VERT LIFT BRIDGE (ft.)	0
		(40) NAV HORIZONTAL CLEARANCE (ft.)	0

Inspector:

Structure Number: 06902

Inspection Date:

Facility Carried: Hwy64/sec16/L14.  
10

## Bridge Inspection Report

## Element Inspection

	Environment	Total Quantity	Units	Condition State 1	Condition State 2	Condition State 3	Condition State 4
<b>12 - Reinforced Concrete Deck</b>	1- Ben.	20471	sq. ft.	9662	10809	0	0
	DECK HAS LONGITUDINAL SPACED 2' APART & TRANSVERSE CRACKS ARE SPACED A VARIOUS DISTANCES. SOFFIT OVERHANGS HAVE TRANSVERSE CRACKS WITH LIGHT EFFLORESCENCE SPACED 2' APART.						
1120 - Efflorescence/Rust Staining		1148			1148		
1130 - Cracking (RC and Other)		9661			9661		
<b>107 - Steel Open Girder/Beam</b>	1- Ben.	2371	ft.	2371			
	BENT #3 GIRDER #5 HAS SHEAR STUDS ON WEB AT BENT.						
515 - Steel Protective Coating		29638	sq. ft.	29638			
<b>205 - Reinforced Concrete Column</b>	1- Ben.	8	each	8			
<b>215 - Reinforced Concrete Abutment</b>	1- Ben.	126	ft.	126			
<b>234 - Reinforced Concrete Pier Cap</b>	1- Ben.	160	ft.	160			
	ALL CAPS HAVE VERTICAL HAIRLINE CRACKS.						
<b>300 - Strip Seal Expansion Joint</b>	1- Ben.	86	ft.	86			
	Seals have minor debris with full function. Joint steel has no paint surface rust with little to no section loss.						
515 - Steel Protective Coating		173	sq. ft.	0	0	0	173
3440 - Effectiveness (Steel Protective Coatings)		173					173
<b>310 - Elastomeric Bearing</b>	1- Ben.	30	each	30			
<b>321 - Reinforced Concrete Approach Slab</b>	1- Ben.	1752	sq. ft.	0	1502	250	0
	TRAVERSE, LONGITUDINAL, AND MAP CRACKING ON BOTH APPROACH SLABS ALL SQUARE FEET ARE EFFECTIVE.						
1130 - Cracking (RC and Other)		1752			1502	250	
<b>331 - Reinforced Concrete Bridge Railing</b>	1- Ben.	948	ft.	948			
	Span 3 right side near bent 3 has minor collision damage.						



Inspector:

Inspection Date:

Structure Number: 06902

Facility Carried: Hwy64/sec16/L14.  
10

### Bridge Inspection Report

#### Maintenance Needs

Date Reported: 06/16/2016

Priority: C - Important

Work Code: N/A

---

#### Deficiency Description:

Abutment 1 right side at start of concrete bridge rail has 2' x 2' x2' deep erosion hole.

#### Work Description:

---

#### Date Repairs Completed:

#### Maintenance Comments:

---

Stage: Open



PHOTO 1      Description      Abutment 1 right side at start of concrete bridge rail has 2' x 2' x2' deep erosion hole.

Inspector:

Inspection Date:

Structure Number: 06902

Facility Carried: Hwy64/sec16/L14.  
10

### Bridge Inspection Report

#### Maintenance Needs

Date Reported: 06/16/2016

Priority: D - Routine

Work Code: N/A

---

#### Deficiency Description:

Abutment 2 right approach rail has collision damage 20' from bridge end.

#### Work Description:

---

#### Date Repairs Completed:

#### Maintenance Comments:

---

Stage: Open



PHOTO 1      Description      Abutment 2 right approach rail has collision damage 20' from bridge end.

Inspector:

Inspection Date:

Structure Number: 06902

Facility Carried: Hwy64/sec16/L14.  
10

### Bridge Inspection Report

#### Maintenance Needs

Date Reported: 6/3/2014 12:00:00 AM

Priority: D - Routine

Work Code: N/A

#### Deficiency Description:

LARGE VEGETATION & TREES GROWING UNDER & BESIDE BRIDGE IN SPAN #1, 2 & 5.

#### Work Description:

Date Repairs Completed:

Maintenance Comments:

Stage: Monitor



PHOTO 1      Description      Typical vegetation

Stage: Monitor



PHOTO 2      Description      Large vegetation.



Inspector:

Inspection Date:

Structure Number: 06902

Facility Carried: Hwy64/sec16/L14.  
10

### Bridge Inspection Report

#### Maintenance Needs

Date Reported: 6/3/2014 12:00:00 AM

Priority: D - Routine

Work Code: N/A

---

#### Deficiency Description:

SMALL DRIFT IN CHANNEL AT BENT #4 LEFT SIDE.

#### Work Description:

---

#### Date Repairs Completed:

#### Maintenance Comments:

---

Stage: Monitor



PHOTO 1      Description      Small drift at bent 4 left side.