



IMPORTANT DATES SY 25-26



Claims are due on the 10th of each month

JULY

1: Application Distribution May Begin
1: New Meal Pattern Requirements Effective in SY 25-26
24: Special Session: Establishing Eligibility

AUGUST

7: Digital Learning: Direct Certification, Civil Rights and Limited English Proficiency
TBD: DC Match

SEPTEMBER

4: Digital Learning: Food Safety, Wellness, Afterschool Snack
22-26: Special Sessions: Verification
TBD: DC Match, Verification Alternate Sample Memo release

OCTOBER

Farm to School Month
1: Verification Activities Begins
2: Digital Learning: Farm to School, Smart Snacks
13-17: National School Lunch Week

NOVEMBER

5-6: Special Sessions: Recipe Development, Scratch Cooking, and Sodium
15: Verification Activities Deadline

DECEMBER

15: Verification Collection Report Due
TBD: FSMC/RFP information Release

JANUARY

TBD: DC Match

FEBRUARY

1: On-Site Monitoring Deadline
5: Digital Learning: Procurement

MARCH

2-6: School Breakfast Week
5: Digital Learning: Special Provision Options and ISP Reporting
TBD: Culinary Directions Managers and Directors Certification Registration Info drops

APRIL

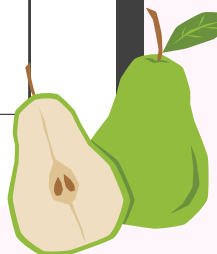
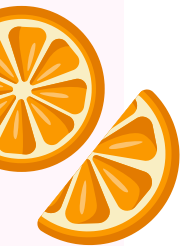
1: DC Match
1: Start ISP Report
2: Digital Learning: Summer Meal Options
15: ISP Report Due

MAY

TBD: Agreements
TBD: Paid Lunch Equity Due
TBD: Health Inspection Report Due
TBD: Special Sessions: Completing the agreement, PLE and Meal Pattern Updates for SY 26-27

JUNE

30: Last Day to Elect CEP for SY 26-27
TBD: Culinary Directions Training Part 1 & 2



MEAL PATTERN UPDATES SY 25-26



Starting July 1, 2025

K-12 students: Breakfast cereals must contain no more than 6 grams of added sugars per dry ounce.

K-12 Students: Yogurt must contain no more than 12 grams of added sugars per 6 ounces (2 grams of added sugars per ounce).

K-12 Students: Flavored milk must contain no more than 10 grams of added sugars per 8 fluid ounces, or for flavored milk sold as competitive food for middle and high schools, 15 grams of added sugars per 12 fluid ounces.

Afterschool snacks must consist of two of the five following meal components. See foot notes for additional afterschool snack meal pattern requirements.

Meal components ¹	Minimum quantities ²
Fluid milk ³	8 fluid ounces.
Meats/meat alternates ⁴	1 ounce equivalent.
Vegetables ⁵	3/4 cup.
Fruits ⁵	3/4 cup.
Grains ⁶	1 ounce equivalent.

¹ Must serve two of the five components for a reimbursable afterschool snack. Only one of the two components may be a beverage.

² May need to serve larger portions to children ages 13 through 18 to meet their nutritional needs.

³ Must be fat-free (skim) or low-fat (1 percent fat or less). Milk may be unflavored or flavored.

⁴ Alternate protein products must meet the requirements in appendix A to [part 226 of this chapter](#). Yogurt must contain no more than 12 grams of added sugars per 6 ounces (2 grams of added sugars per ounce). Information on crediting meats/meat alternates may be found in FNS guidance.

⁵ Juice must be pasteurized, full-strength juice. No more than half of the weekly fruit or vegetable offerings may be in the form of juice.

⁶ At least 80 percent of grains offered weekly (by ounce equivalents) must be whole grain-rich, as defined in [§ 210.2](#), and the remaining grains items offered must be enriched. Grain-based desserts may not be used to meet the grains requirement. Breakfast cereal must have no more than 6 grams of added sugars per dry ounce. Information on crediting grain items may be found in FNS guidance.

School food authorities must also accept a medical statement signed by a registered dietitian. The medical statement must provide sufficient information about the child's dietary restrictions, such as foods to be omitted and recommended alternatives, if appropriate.

Non-domestic food purchases must not exceed 10 percent of total annual commercial food costs that a school food authority purchases per school year.

Starting October 1, 2025

Preschool Students: Breakfast cereals must contain no more than 6 grams of added sugars per dry ounce.

Preschool Students: Yogurt must contain no more than 12 grams of added sugars per 6 ounces (2 grams of added sugars per ounce)



USDA is an equal opportunity provider, employer, and lender.

